

# Burrillville Interconnection Project

Energy Facility Siting Board

Preliminary Hearing

May 23, 2017



# AGENDA

**nationalgrid**

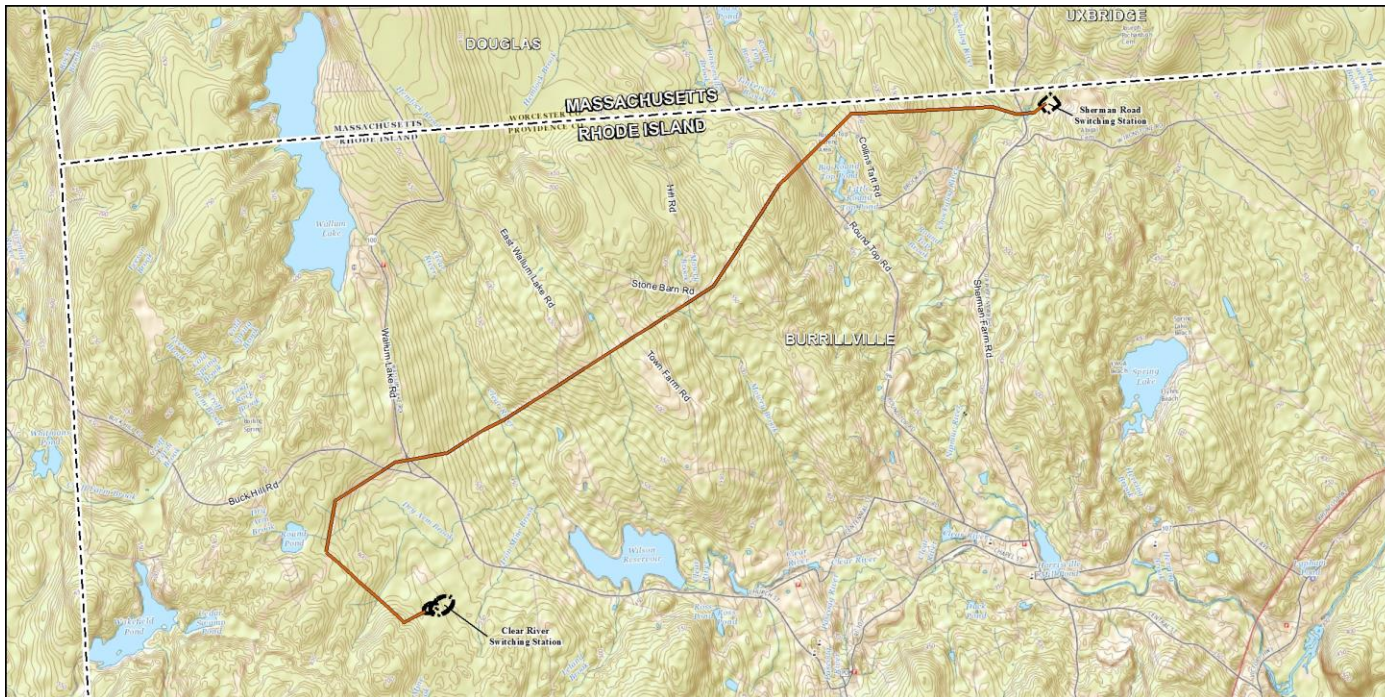
HERE WITH YOU. HERE FOR YOU.

- Introduction
- Project Need
- Project Overview
- Estimated Costs
- Permits and Approvals
- Schedule

# INTRODUCTION

**nationalgrid**

HERE WITH YOU. HERE FOR YOU.



The Burrillville Interconnection Project (Project) is the construction of a new 345 kV transmission line between the proposed Clear River Energy Center (CREC) and the Sherman Road Switching Station

# INTRODUCTION

- Project is a joint application by The Narragansett Electric Company d/b/a National Grid (TNEC) and Clear River Energy LLC for a new transmission line in support of the CREC
- Project is located in Burrillville, Rhode Island
- New 6.8 mile 345 kV transmission line - 3052 Line
  - 6.0 miles – existing TNEC right of way (ROW)
  - 0.8 mile – new CREC ROW
- Realignment of 1.6 miles of the existing 341 and 347 Lines
- Realignment of 250 feet of the existing 328 Line
- Improvements within the Sherman Road Switching Station

# NEED

**nationalgrid**

HERE WITH YOU. HERE FOR YOU.

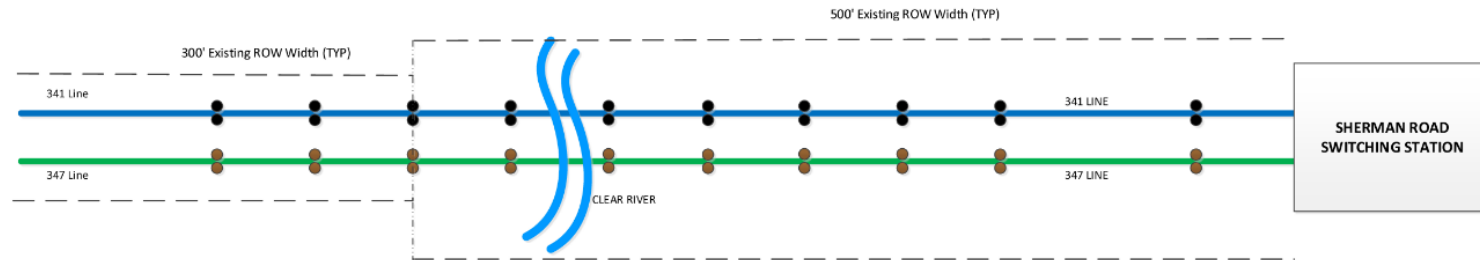
- The Project is a result of TNEC's obligation to connect the CREC to the electric grid
- Point of interconnection was determined by ISO-NE
- Clear River Energy LLC is responsible for all costs for the engineering, permitting, construction, and operation of the facilities.

# OVERVIEW – Line Configuration

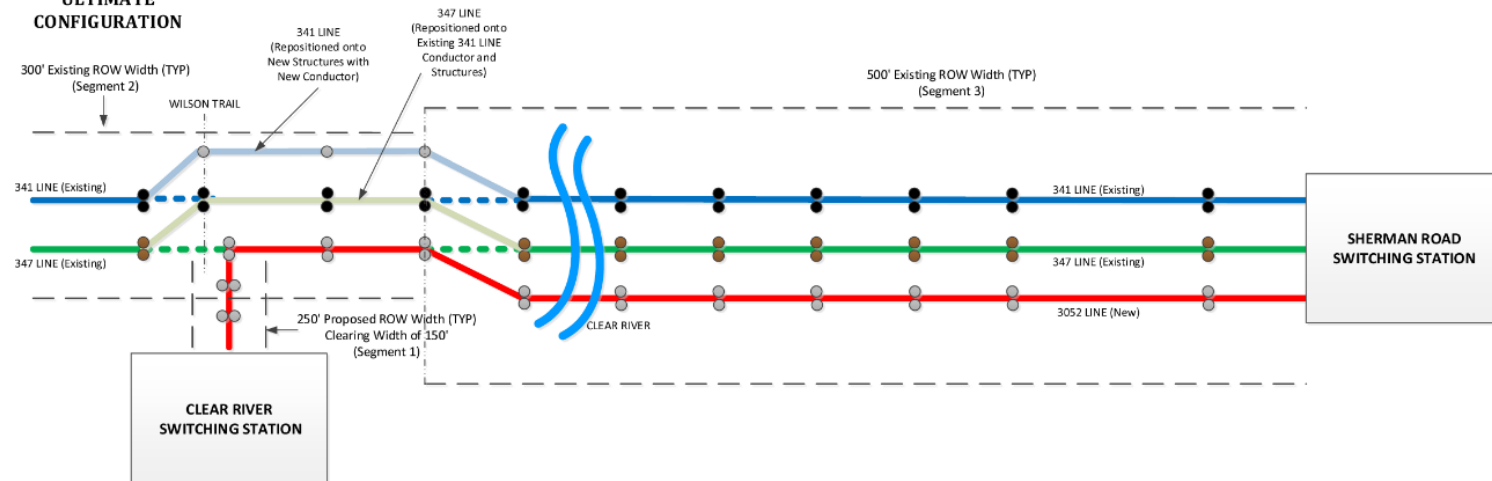
**nationalgrid**

HERE WITH YOU. HERE FOR YOU.

## EXISTING CONFIGURATION



## ULTIMATE CONFIGURATION



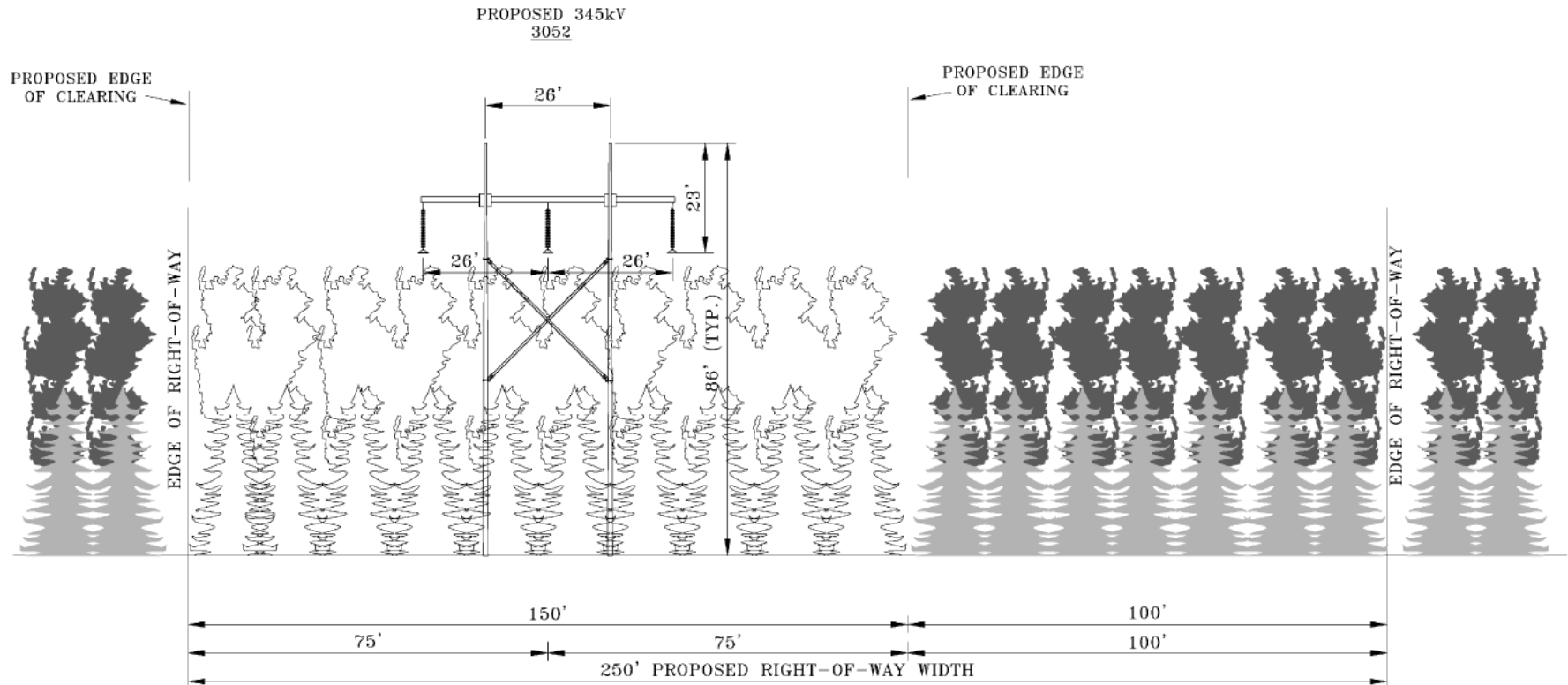
Dimensions are as labeled. Not shown to scale.

# OVERVIEW – CREC ROW

## Segment 1 – Cross Section

**nationalgrid**

HERE WITH YOU. HERE FOR YOU.



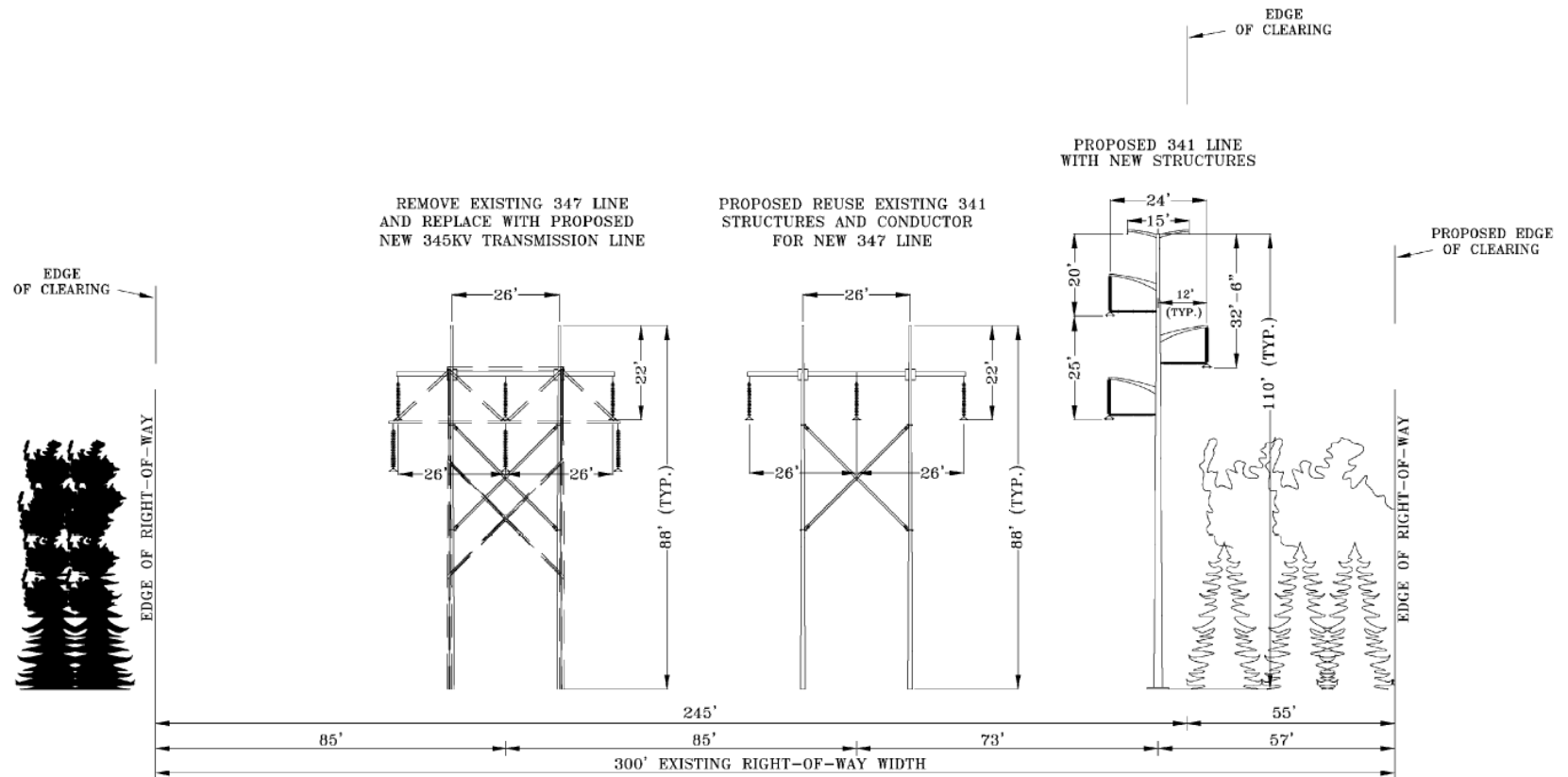
View Southeast towards CREC

# OVERVIEW – Existing ROW

## Segment 2 – Cross Section

**nationalgrid**

HERE WITH YOU. HERE FOR YOU.



View Facing Southwest



# OVERVIEW – Existing ROW

## Segment 2 - Rendering

**nationalgrid**

HERE WITH YOU. HERE FOR YOU.



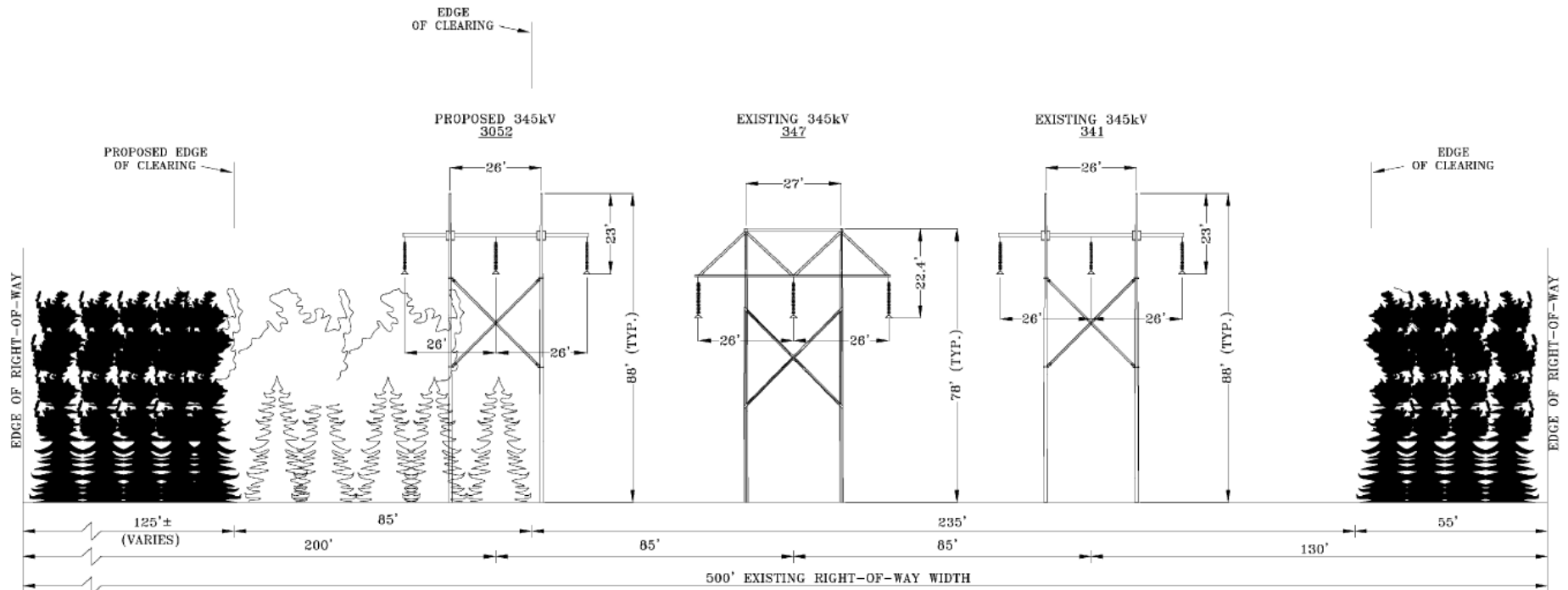
View Southwest from Buck Hill Road

# OVERVIEW – Existing ROW

## Segment 3 – Cross Section

**nationalgrid**

HERE WITH YOU. HERE FOR YOU.



View Facing Southwest

# OVERVIEW – Existing ROW

## Segment 3 - Rendering

**nationalgrid**

HERE WITH YOU. HERE FOR YOU.



View Northeast from Round Top Road



# ESTIMATED COSTS

**nationalgrid**

HERE WITH YOU. HERE FOR YOU.

Project Components	Estimated Costs (\$M)
Transmission Line Facilities <sup>1</sup>	\$41.0
Sherman Road Switching Station	\$6.2
<b>Total</b>	<b>\$47.2</b>

<sup>1</sup> Includes all work proposed on the new 3052 Line, and the existing 347, 341, and 328 Lines.

# PERMITS AND APPROVALS

- RI Energy Facility Siting Board
- US Army Corps of Engineers – Section 404 Permit
- RI Department of Environmental Management – Freshwater Wetlands Permit, 401 Water Quality Certification, RIPDES
- RI Department of Transportation
- Local Permits (advisory opinions):
  - Dimensional Variance – Height (ZBR)
  - Construction Work Hours (ZBR)
  - Soil Erosion and Sediment Control (Building Official)

# SCHEDULE

Activity	Estimated Start Date	Estimated Completion
Planning and Engineering	Fall 2016	Winter 2016/2017
Permitting and Licensing	Winter 2016/2017	Winter 2017/2018
Construction	Spring 2018	Winter 2018/2019
Facilities In-Service	Summer 2019	

# Burrillville Interconnection Project

Energy Facility Siting Board

Preliminary Hearing

May 23, 2017

