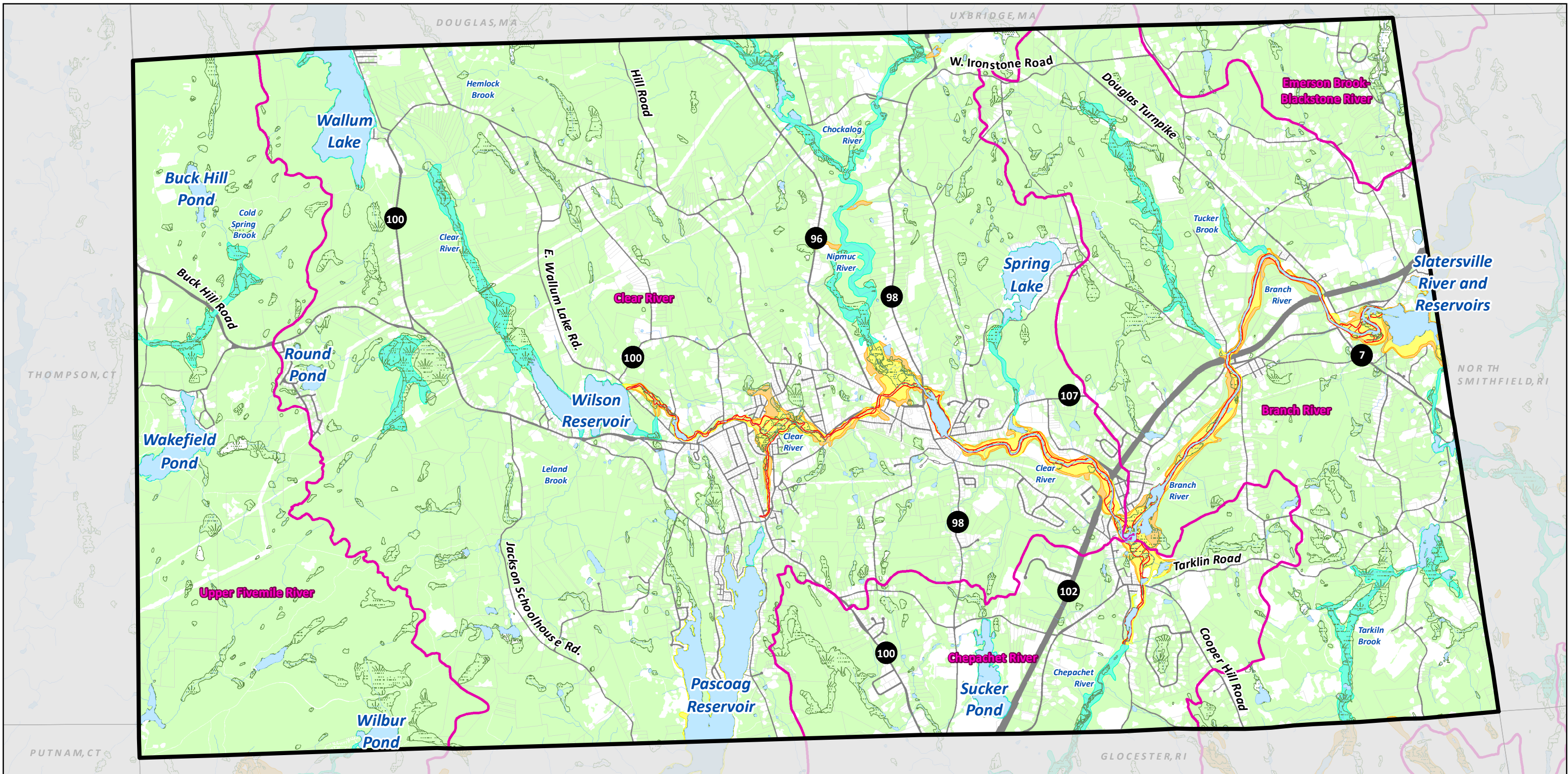


Map II.1

Inland Water Features



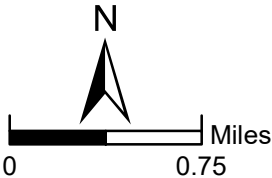
TOWN OF BURRILLVILLE COMPREHENSIVE PLAN - MAY 2018

Horsley Witten Group
Sustainable Environmental Solutions

55 Dorrance Street • Suite 403 • Providence, RI 02903
401-272-1717 • horsleywitten.com



RIGIS



This map is not the product of a Professional Land Survey. It was created by the Horsley Witten Group, Inc. for general reference, informational, planning, or guidance use, and is not a legally authoritative source as to location of natural or manmade features. Proper interpretation of this map may require the assistance of appropriate professional services. The Horsley Witten Group, Inc. makes no warranty, express or implied, related to the spatial accuracy, reliability, completeness, or currentness of this map.

Inland Water Features

Watershed Boundary
Dataset: HUC 12

Ecological Communities Classification

Forested Areas
 Wetlands
(Estuarine & Palustrine)

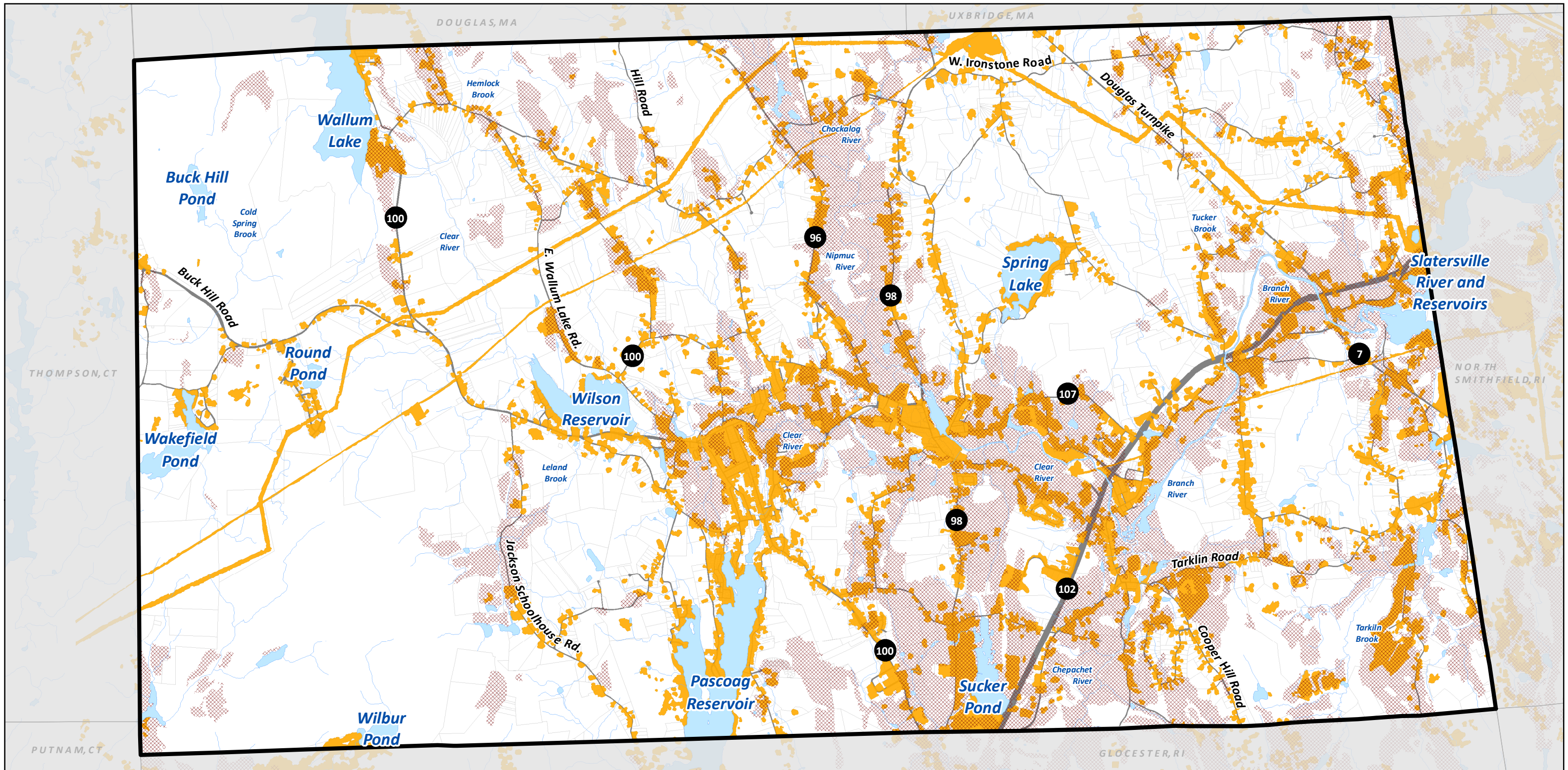
1% Annual Chance Flood Hazard

Zone A Zone AE
 0.2% Annual Chance Flood Hazard
 Regulatory Floodway

*Data Source: RIGIS

Map II.2

Valuable Agricultural Soils



TOWN OF BURRILLVILLE COMPREHENSIVE PLAN - MAY 2018

Horsley Witten Group

Sustainable Environmental Solutions

55 Dorrance Street • Suite 403 • Providence, RI 02903
401-272-1717 • horsleywitten.com

N

0

0.75 Miles

This map is not the product of a Professional Land Survey. It was created by the Horsley Witten Group, Inc. for general reference, informational, planning, or guidance use, and is not a legally authoritative source as to location of natural or manmade features. Proper interpretation of this map may require the assistance of appropriate professional services. The Horsley Witten Group, Inc. makes no warranty, express or implied, related to the spatial accuracy, reliability, completeness, or currentness of this map.

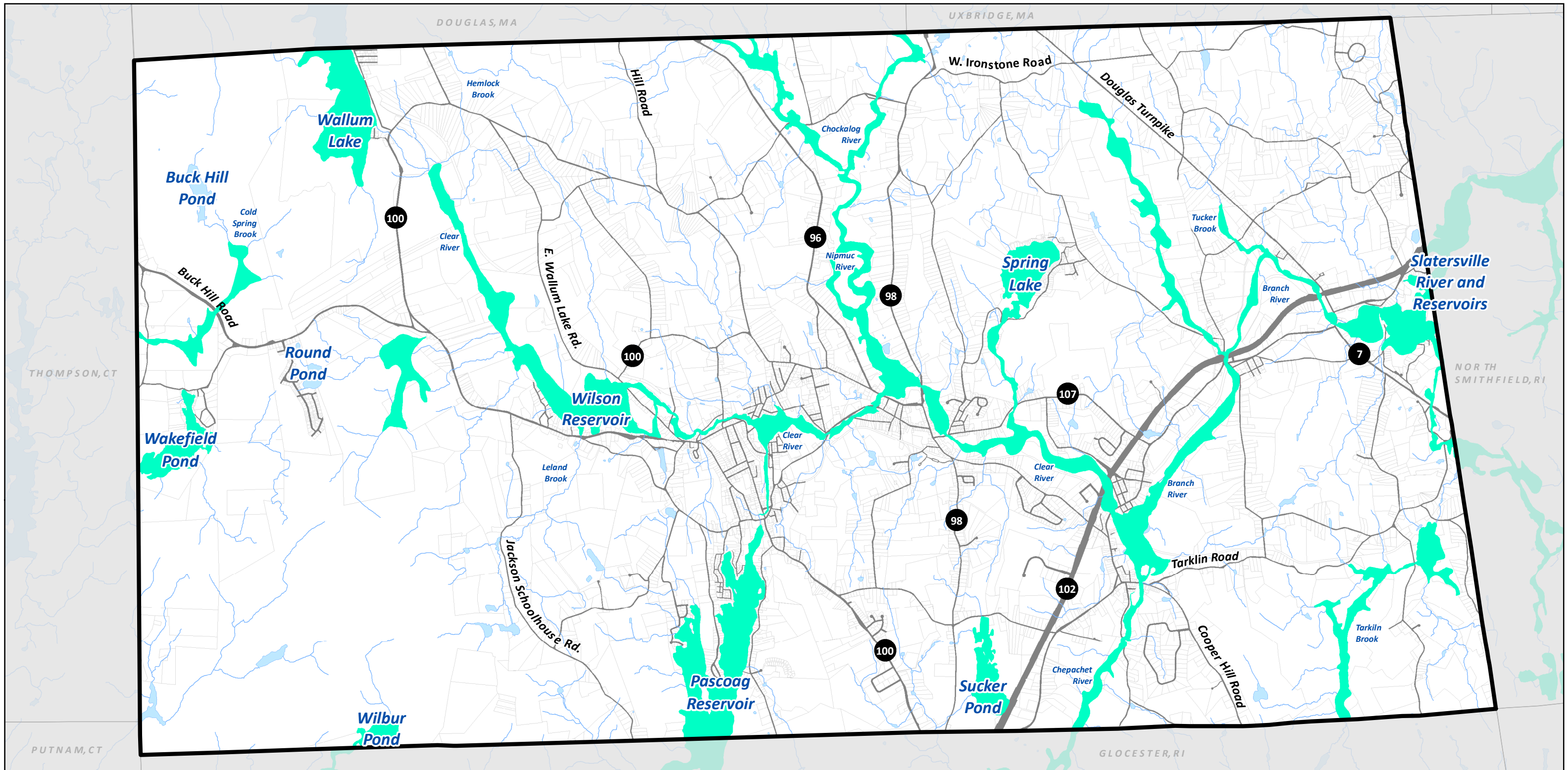
Valuable Agricultural Soils

- Valuable Agricultural Soils
- Developed Areas

*Data Source: RIGIS

Map II.3

Areas Prone to Flooding



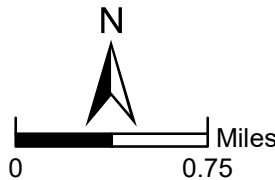
TOWN OF BURRILLVILLE COMPREHENSIVE PLAN - MAY 2018

Horsley Witten Group
Sustainable Environmental Solutions

55 Dorrance Street • Suite 403 • Providence, RI 02903
401-272-1717 • horsleywitten.com




RIGIS



This map is not the product of a Professional Land Survey. It was created by the Horsley Witten Group, Inc. for general reference, informational, planning, or guidance use, and is not a legally authoritative source as to location of natural or manmade features. Proper interpretation of this map may require the assistance of appropriate professional services. The Horsley Witten Group, Inc. makes no warranty, express or implied, related to the spatial accuracy, reliability, completeness, or currentness of this map.

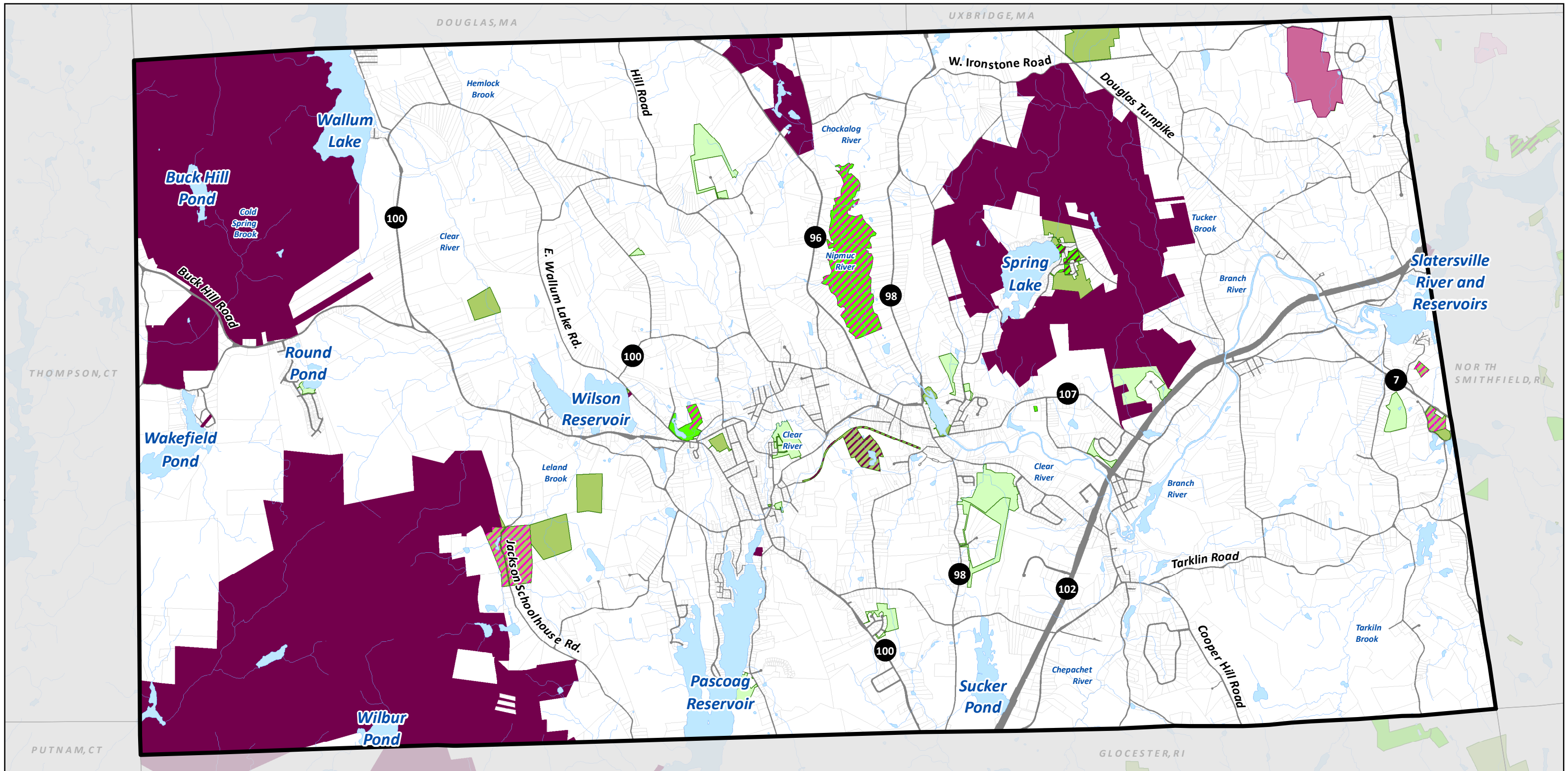
Exposure to Flooding

 Flood Hazard Areas

*Data Source: RIGIS

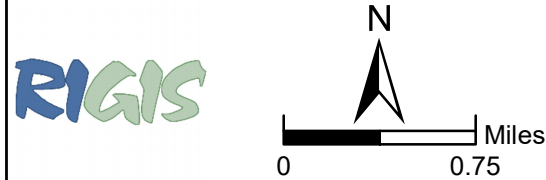
Map II.4

Conservation Areas



TOWN OF BURRILLVILLE COMPREHENSIVE PLAN - MAY 2018

Horsley Witten Group
Sustainable Environmental Solutions
55 Dorrance Street • Suite 403 • Providence, RI 02903
401-272-1717 • horsleywitten.com



This map is not the product of a Professional Land Survey. It was created by the Horsley Witten Group, Inc. for general reference, informational, planning, or guidance use, and is not a legally authoritative source as to location of natural or manmade features. Proper interpretation of this map may require the assistance of appropriate professional services. The Horsley Witten Group, Inc. makes no warranty, express or implied, related to the spatial accuracy, reliability, completeness, or currentness of this map.

Conservation Areas (Local & State)

Local Conservation Areas

- Conservation Intent
- Deed Restriction
- Easement
- Fee Simple Interest

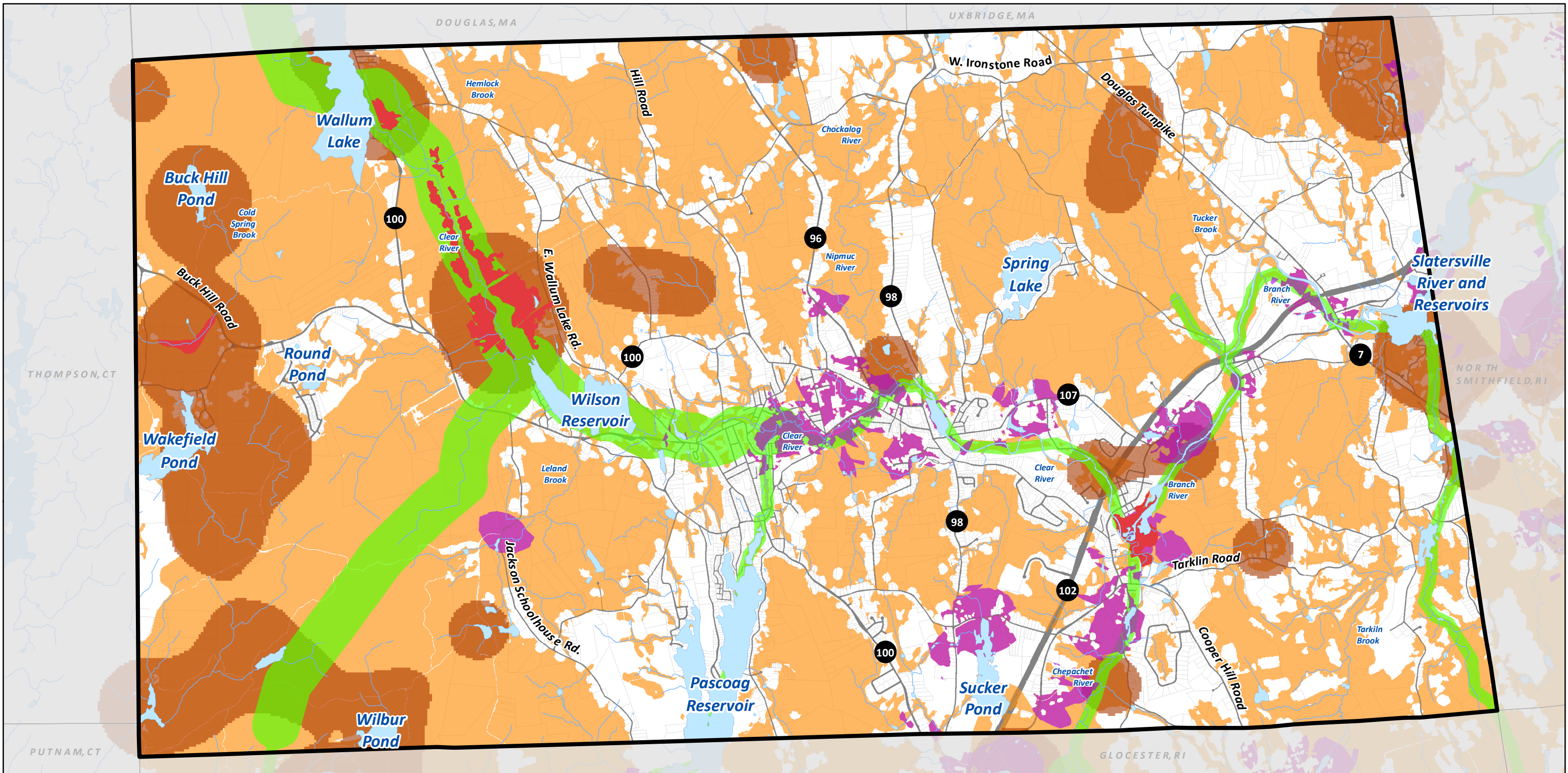
State Conservation Areas

- Agricultural Development Rights
- Conservation Easement
- Fee Title
- Forestry Easement
- Recreation Easement

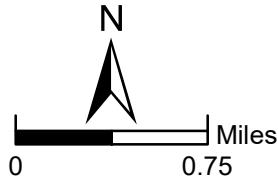
*Data Source: RIGIS

Map II.5

Conservation Opportunity Areas



TOWN OF BURRILLVILLE COMPREHENSIVE PLAN - MAY 2018



This map is not the product of a Professional Land Survey. It was created by the Horsley Witten Group, Inc. for general reference, informational, planning, or guidance use, and is not a legally authoritative source as to location of natural or manmade features. Proper interpretation of this map may require the assistance of appropriate professional services. The Horsley Witten Group, Inc. makes no warranty, express or implied, related to the spatial accuracy, reliability, completeness, or currentness of this map.

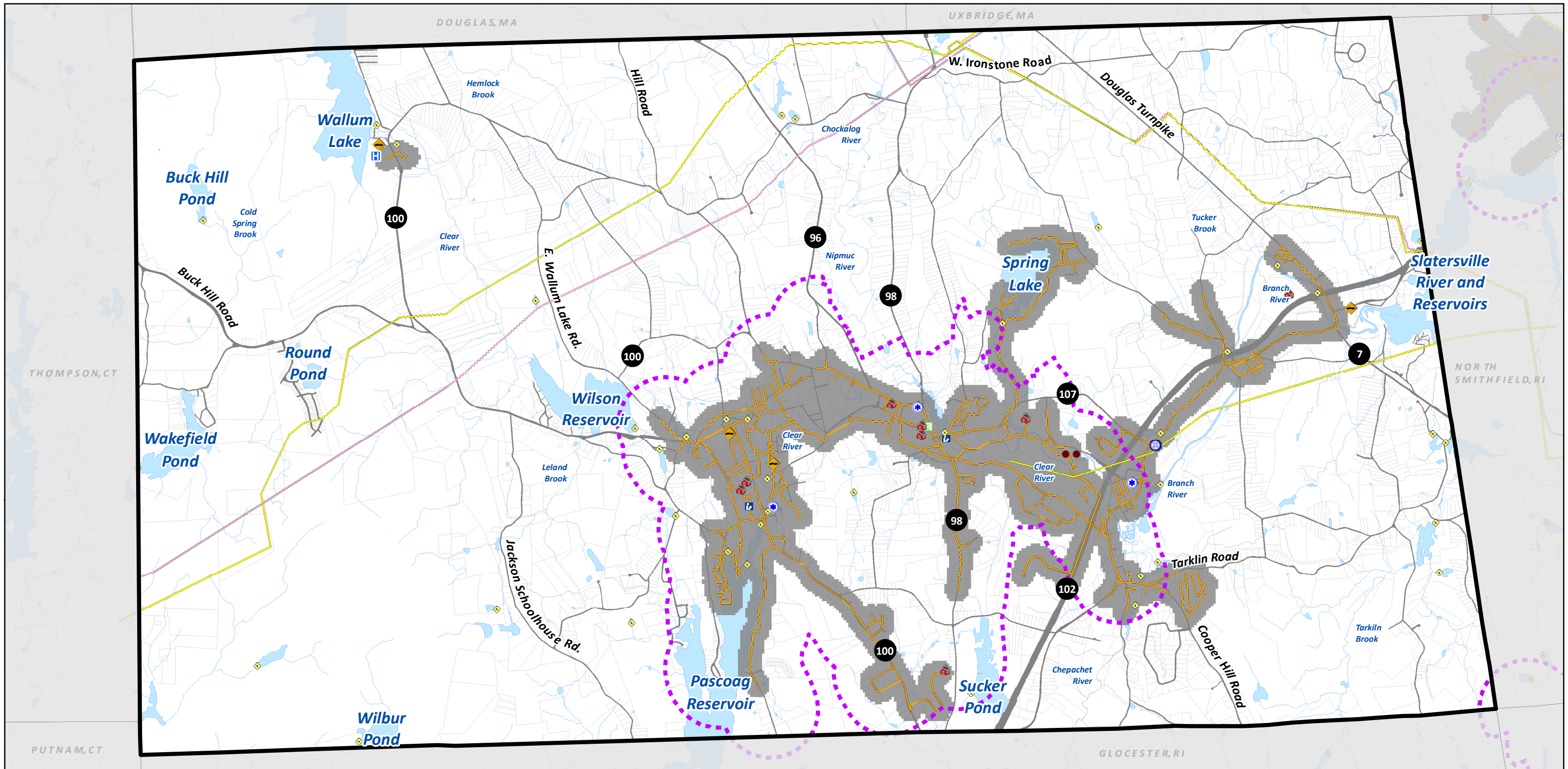
Conservation Opportunity Areas

- High Value / High Vulnerability Habitat
- Ecological Land Unit
- Composite Conservation Opportunity Areas
- Natural Heritage Area
- Corridor

*Data Source: RIGIS

Map III.1

Services & Facilities



TOWN OF BURRILLVILLE COMPREHENSIVE PLAN - MAY 2018

Horsley Witten Group

Sustainable Environmental Solutions

55 Dorrance Street • Suite 403 • Providence, RI 02903
401-272-1717 • horsleywitten.com

RIGIS

N

0 0.75 Miles

This map is not the product of a Professional Land Survey. It was created by the Horsley Witten Group, Inc. for general reference, informational, planning, or guidance use, and is not a legally authoritative source as to location of natural or manmade features. Proper interpretation of this map may require the assistance of appropriate professional services. The Horsley Witten Group, Inc. makes no warranty, express or implied, related to the spatial accuracy, reliability, completeness, or currentness of this map.

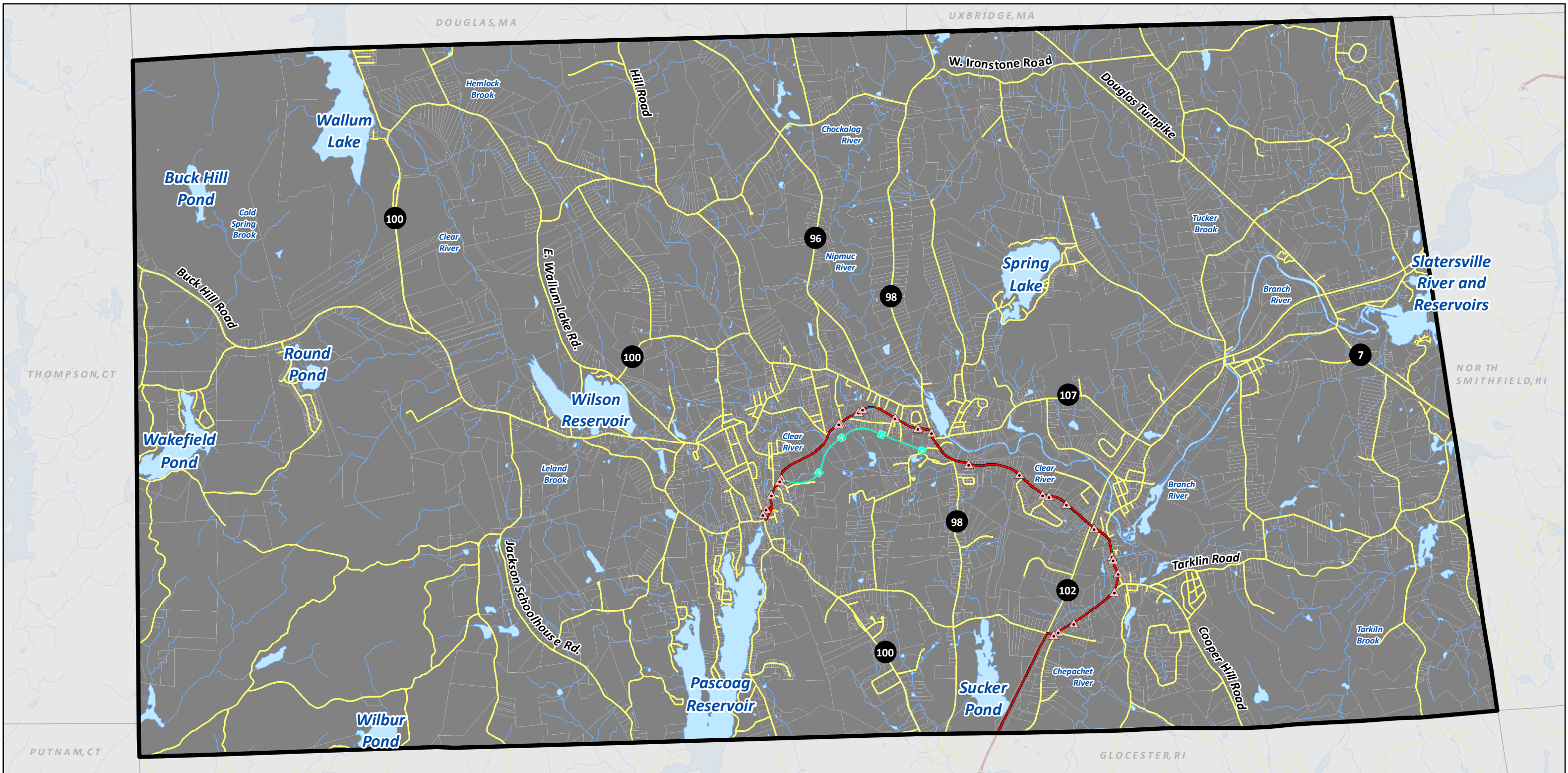
Services & Facilities

- | | | |
|-------------------------------|---------------------------|--------------------------|
| Urban Services Boundary | Emergency Medical Service | Natural Gas Transmission |
| Sewer Lines | Hospitals | Fire Stations |
| Correctional Institutions | Law Enforcement | Town and City Halls |
| Dams | Schools | Sewered Areas |
| Electrical Transmission Lines | Libraries | |
| | Active Solid Waste Sites | |

*Data Source: RIGIS

Map VI.1

Existing Transportation Network



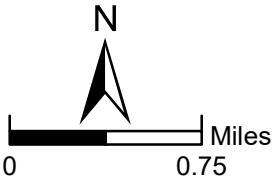
TOWN OF BURRILLVILLE COMPREHENSIVE PLAN - MAY 2018

Horsley Witten Group
Sustainable Environmental Solutions

55 Dorrance Street • Suite 403 • Providence, RI 02903
401-272-1717 • horsleywitten.com



RIGIS



This map is not the product of a Professional Land Survey. It was created by the Horsley Witten Group, Inc. for general reference, informational, planning, or guidance use, and is not a legally authoritative source as to location of natural or manmade features. Proper interpretation of this map may require the assistance of appropriate professional services. The Horsley Witten Group, Inc. makes no warranty, express or implied, related to the spatial accuracy, reliability, completeness, or currentness of this map.

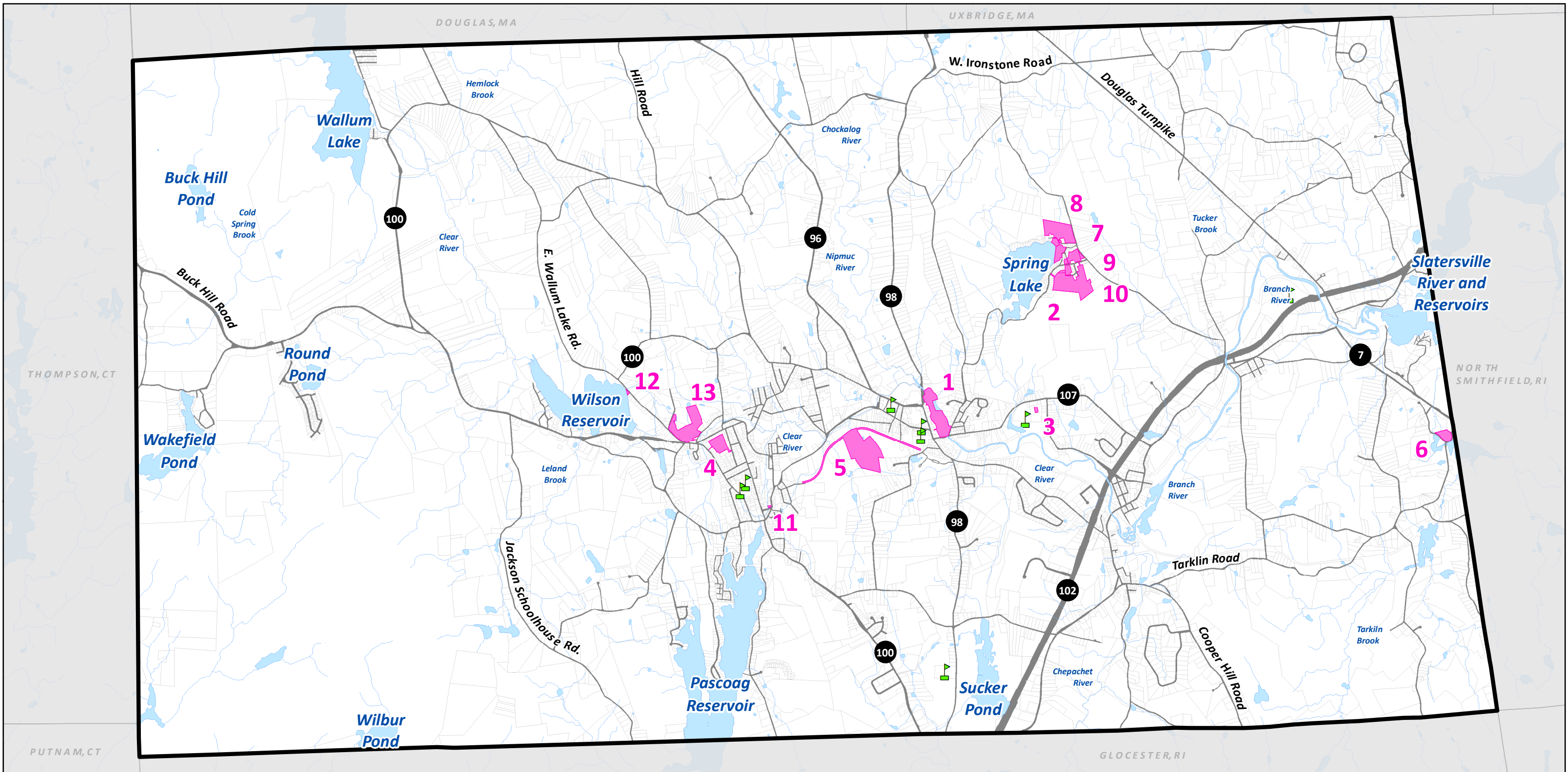
Existing Transportation Network

- Roads
- Bike Paths
- RIPTA Bus Routes
- RIPTA Bus Stops

*Data Source: RIGIS

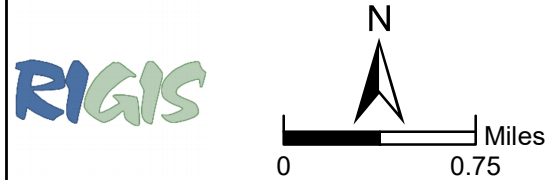
Map VIII.1

Developed Recreation Areas



TOWN OF BURRILLVILLE COMPREHENSIVE PLAN - MAY 2018

Horsley Witten Group
 Sustainable Environmental Solutions
 55 Dorrance Street • Suite 403 • Providence, RI 02903
 401-272-1717 • horsleywitten.com



This map is not the product of a Professional Land Survey. It was created by the Horsley Witten Group, Inc. for general reference, informational, planning, or guidance use, and is not a legally authoritative source as to location of natural or manmade features. Proper interpretation of this map may require the assistance of appropriate professional services. The Horsley Witten Group, Inc. makes no warranty, express or implied, related to the spatial accuracy, reliability, completeness, or currentness of this map.

Developed Recreation			
ID	Site	ID	Site
1	Bicentennial Park	8	Spring Lake
2	Black Hut / Donovan	9	Spring Lake Beach
3	Burrillville Recreation Area	10	Spring Lake, McLean
4	Houser Field	11	Veterans Memorial Park
5	Pascoag Rail Trail	12	Wallum Lake
6	Snizek Park	13	White Mill Park
7	Spring Lake		

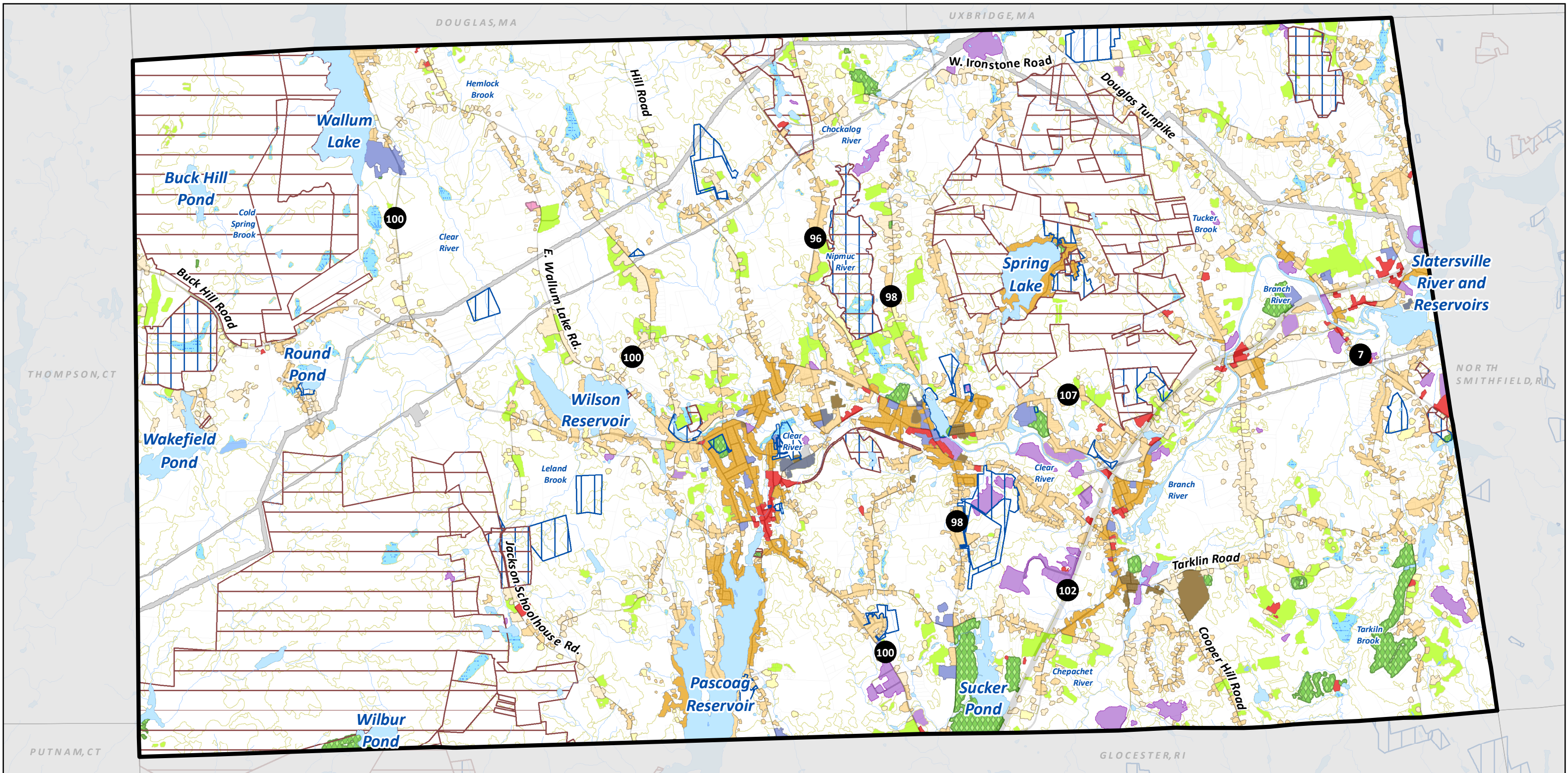
Developed Reacreation Areas

- Schools
- Developed Recreation (park, outdoor atheletic facilities, other)

*Data Source: RIGIS

Map XI.1

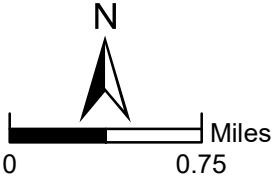
Existing Land Use



TOWN OF BURRILLVILLE COMPREHENSIVE PLAN - MAY 2018

Horsley Witten Group
Sustainable Environmental Solutions
55 Dorrance Street • Suite 403 • Providence, RI 02903
401-272-1717 • horsleywitten.com

RIGIS



This map is not the product of a Professional Land Survey. It was created by the Horsley Witten Group, Inc. for general reference, informational, planning, or guidance use, and is not a legally authoritative source as to location of natural or manmade features. Proper interpretation of this map may require the assistance of appropriate professional services. The Horsley Witten Group, Inc. makes no warranty, express or implied, related to the spatial accuracy, reliability, completeness, or currentness of this map.

Existing Land Use

- Agricultural
- Cemeteries
- Commercial
- Commercial/Industrial Mixed
- Developed Recreation

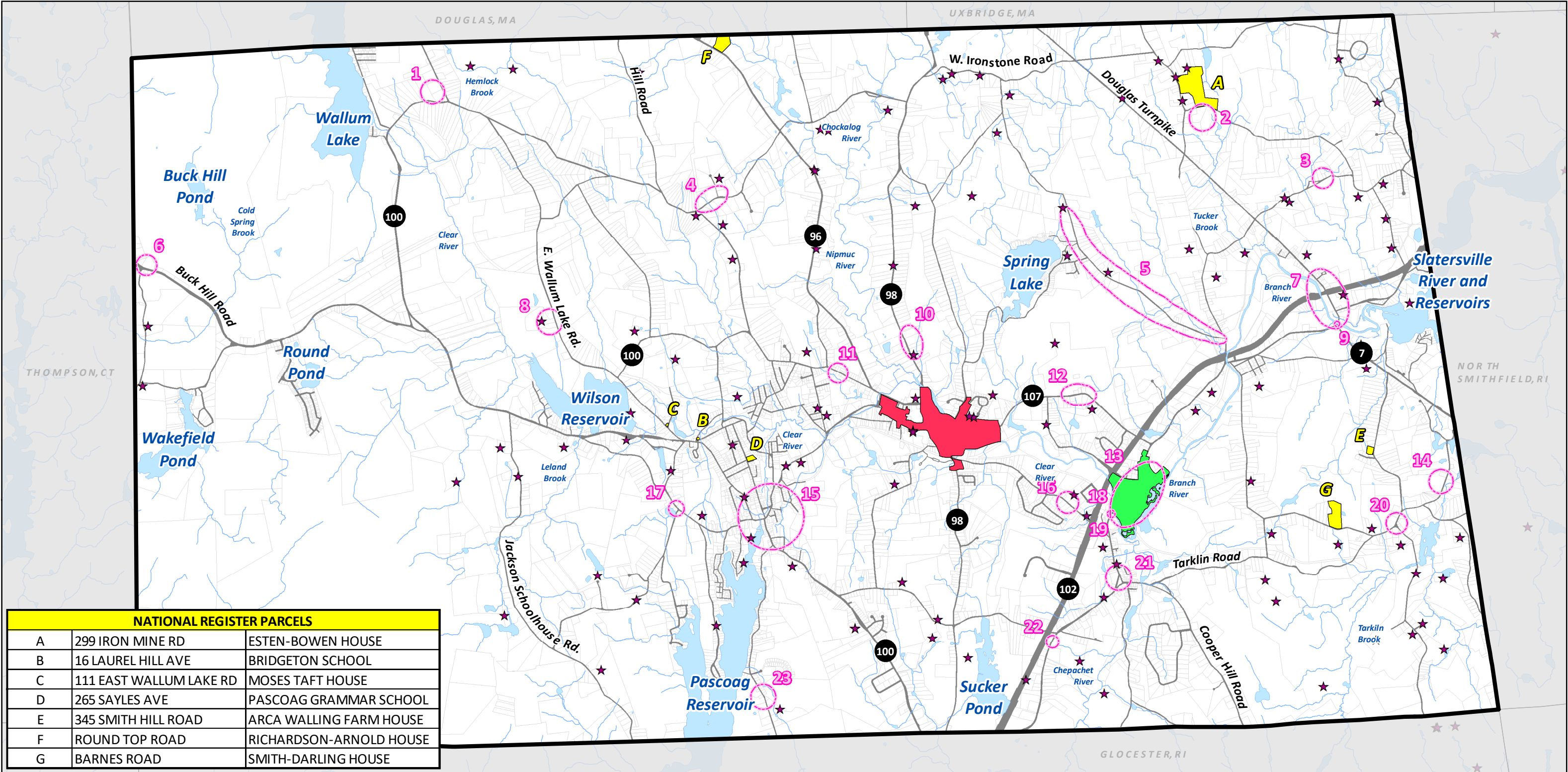
- Industrial/Manufacturing
- Institutional
- Low Density Residential
- Medium Low Density Residential
- Medium Density Residential
- Medium High Density Residential

- High Density Residential
- Transportation & Utilities
- Undeveloped
- Water
- Wetland
- State Conservation Areas
- Local Conservation Areas

*Data Source: RIGIS

Map X.1

Historic Districts and Sites



NATIONAL REGISTER PARCELS		
A	299 IRON MINE RD	ESTEN-BOWEN HOUSE
B	16 LAUREL HILL AVE	BRIDGETON SCHOOL
C	111 EAST WALLUM LAKE RD	MOSES TAFT HOUSE
D	265 SAYLES AVE	PASCOAG GRAMMAR SCHOOL
E	345 SMITH HILL ROAD	ARCA WALLING FARM HOUSE
F	ROUND TOP ROAD	RICHARDSON-ARNOLD HOUSE
G	BARNES ROAD	SMITH-DARLING HOUSE

TOWN OF BURRILLVILLE COMPREHENSIVE PLAN - MAY 2018

Horsley Witten Group

Sustainable Environmental Solutions

55 Dorrance Street • Suite 403 • Providence, RI 02903
401-272-1717 • horsleywitten.com

This map is not the product of a Professional Land Survey. It was created by the Horsley Witten Group, Inc. for general reference, informational, planning, or guidance use, and is not a legally authoritative source as to location of natural or manmade features. Proper interpretation of this map may require the assistance of appropriate professional services. The Horsley Witten Group, Inc. makes no warranty, express or implied, related to the spatial accuracy, reliability, completeness, or currentness of this map.

N

0

0.75 Miles

ID	HISTORICAL CANDIDATE SITE NAME	
1	BROWN ANGELL FARM/SINGLETON FARM	13 OAKLAND H.D.
2	ESTER FARM	14 SMITH-NICHOLS HOUSE
3	BALLOU-BLIGH HOUSE	15 PASCOAG H.D./SAYLES HSE/CALVARY/FIRST BA
4	A. PAINE FARM	16 RUEBEN KEACH HOUSE, 66 CENTRAL ST.
5	JOHN WHITE FARM	17 EAGLE PEAK SCHOOL
6	LOGEE WHITING HOUSE	18 OAKLAND H.D., OAKLAND BRIDGE
7	NASONVILLE SCHOOL	19 OAKLAND BRIDGE
8	J. MILLARD HOUSE/BARKSFIELD	20 GREENE HOUSE
9	NASONVILLE BRIDGE, NASONVILLE SCHOOL	21 D.H. WHIPPLE HOUSE
10	YOUNG SHERMAN HOUSE	22 M. SMITH HOUSE
11	D. SMITH HOUSE	23 S. EDDY HOUSE
12	SWEETS HILL H.D.	

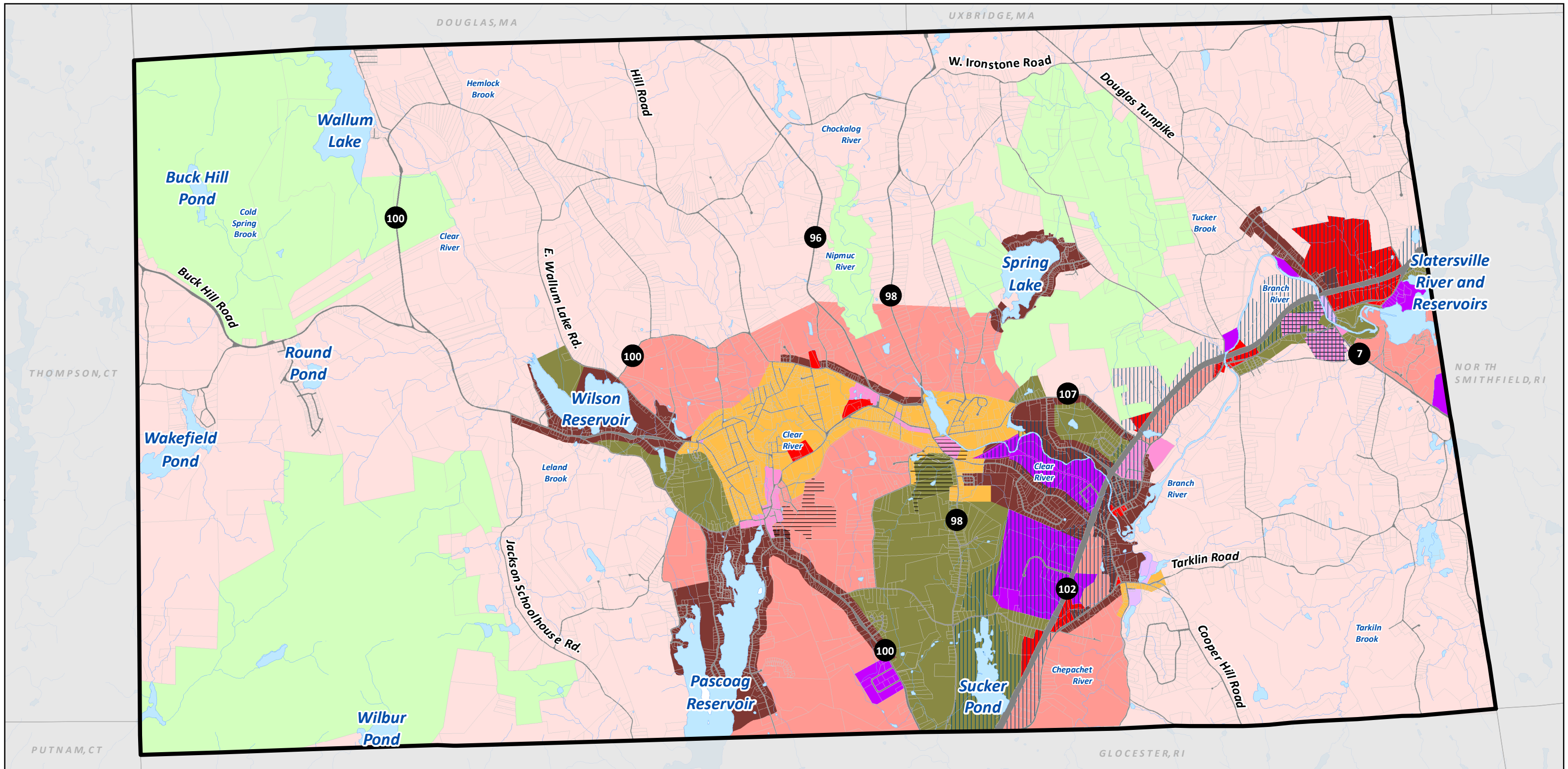
Historic Districts and Sites

- Harrisville Historic District
- Oakland Historic District
- National Register of Historic Places
- Historic Candidate Sites
- Historical Cemeteries

*Data Source: RIGIS

Map XI.2

Existing Zoning



TOWN OF BURRILLVILLE COMPREHENSIVE PLAN - MAY 2018

Horsley Witten Group

Sustainable Environmental Solutions

55 Dorrance Street • Suite 403 • Providence, RI 02903
401-272-1717 • horsleywitten.com

N

0

0.75 Miles

This map is not the product of a Professional Land Survey. It was created by the Horsley Witten Group, Inc. for general reference, informational, planning, or guidance use, and is not a legally authoritative source as to location of natural or manmade features. Proper interpretation of this map may require the assistance of appropriate professional services. The Horsley Witten Group, Inc. makes no warranty, express or implied, related to the spatial accuracy, reliability, completeness, or currentness of this map.

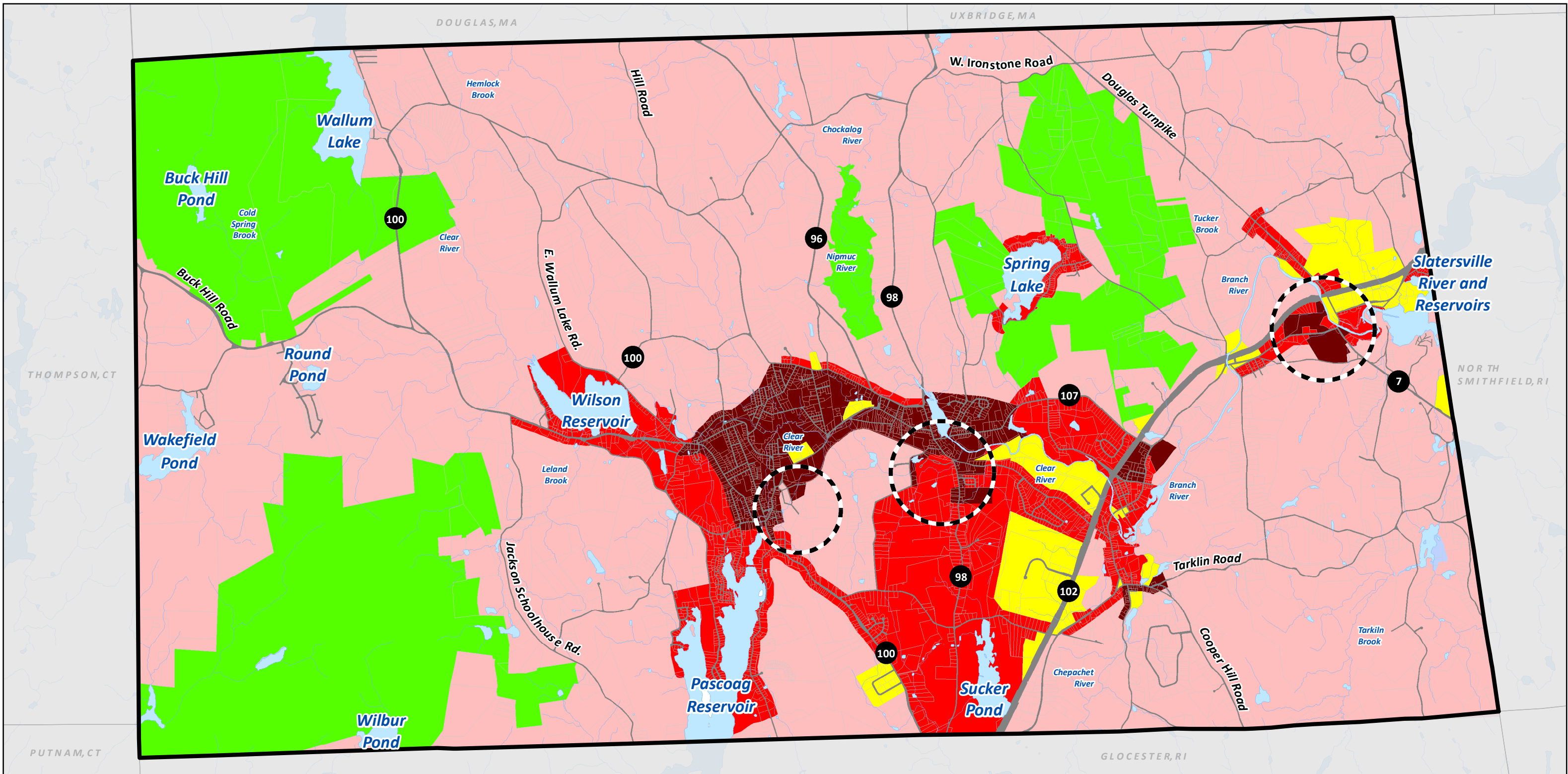
Existing Zoning Districts

- | | | |
|-----------------------------------|-----------------------------------|----------------------------|
| Farming/Residential | Open Space (state land) | Route 102 DMD Overlay Zone |
| Farming/Residential | Village Residential | VPD Overlay Zone |
| General Commercial (formerly C-2) | Suburban Residential | |
| General Industrial (formerly M-2) | Suburban Residential | |
| Limited Industrial (formerly M-1) | Village Commercial (formerly C-1) | |

*Data Source: RIGIS

Map XI.3

Future Land Use Map



TOWN OF BURRILLVILLE COMPREHENSIVE PLAN - MAY 2018

Horsley Witten Group

Sustainable Environmental Solutions

55 Dorrance Street • Suite 403 • Providence, RI 02903
401-272-1717 • horsleywitten.com

N

0

0.75

Miles

This map is not the product of a Professional Land Survey. It was created by the Horsley Witten Group, Inc. for general reference, informational, planning, or guidance use, and is not a legally authoritative source as to location of natural or manmade features. Proper interpretation of this map may require the assistance of appropriate professional services. The Horsley Witten Group, Inc. makes no warranty, express or implied, related to the spatial accuracy, reliability, completeness, or currentness of this map.

Future Land Use Map

- Village Planned Development Areas
- Farming/Residential
- Commercial/Industrial
- Open Space
- Suburban Residential
- Village Development (Residential and/or Commercial)

**Data Source: RIGIS*