

Burrillville

Bugle



Fall/Winter 2018

Index

See Center Insert for Emergency & Public Assistance Services	
Addiction Assistance Program	Page 29
Adopt-A-Spot	" 55
Animal Control Shelter	" 33
Berard-Desjarlais American Legion, Post 88	" 54
Boy Scouts of America	" 71
Burrillville Extended Care	" 23
Commerce Park	" 8
Conservation Commission	" 70
Department of Public Works, Refuse & Recycling	" 42
Department of Public Works	" 50
Emergency Management	" 30
Farmers Market	" 72
Finance Director	" 11
Fire Departments	" 76
Historical Society	" 53
Jesse M. Smith Memorial Library	" 60
Lions Club	" 59
Parks and Recreation	" 36
Pascoag Public Library	" 68
Police Department	" 25
Post Offices	" 77
Redevelopment Agency	" 9
School Department	" 65
Senior Housing	" 75
Senior Services	" 74
Sewer Commission	" 58
Spring Lake Beach	" 41
State Government Officials	" 79
Tax Assessor	" 13
Town Clerk	" 15
Town Council President	" 4
Town Directory	" 78
Town Manager	" 5

How to Get Information/Contact Us

There are many different ways to get information, public notices and communicate with the Town.

Town Website



The Town has a website that is full of information for residents and visitors! www.burrillville.org. The website is a great tool to find information out about the Town, obtain contact information for all the different town departments, town budgets and finances, and very helpful EMERGENCY AND CODE RED INFORMATION.

Public Notices and Newsletters

You can subscribe through the Town website to receive newsletters and notices for a wide variety of information and keep up to date on the things currently going on throughout the Town! Under the Public Notices and Public Newsletter Links on the Town website you can view things like the Town Bulletin Board, Town Meeting Notices and Minutes, Bids and Requests for Proposals, Announcements and Press Releases. You can also view news from the Parks and Recreation Department, current rubbish and recycling information, as well as this edition (along with older editions) of the Burrillville Bugle!

Local Business Directory

There is a Business Directory to help residents and visitors navigate their way through the Town and locate the local businesses who have registered. If you're a local business, please register at the Business Directory page.

Visit Burrillville



We have a separate website dedicated to promoting Burrillville's quality of life, the natural beauty and local history of our Town. Visit this website at www.visitburrillville.org or by clicking the appropriate link on the Town of Burrillville website entitled Visit Burrillville!

Facebook



Like us on Facebook! The Town of Burrillville and the Police Department have Facebook pages. It is another great way for us to communicate with the residents and visitors of Burrillville in this digital age. Both are updated regularly.

Town Council President

John F. Pacheco III

Greetings,

We have enjoyed another beautiful spring and summer season in Burrillville. Our students have again won musical, athletic, robotic, and academic awards. We even had a student, one of only five in the nation, elected to the National Council for SADD. Nicely done, Mackenzie Raimond! Our town facilities are in great shape, we've broken ground on a new DPW facility and a new animal control building, the Jesse M. Smith Library had a wonderful summer concert series, and improvements and additions have made Spring Lake Beach a fun family place to be again.

As I write this, the town is working hard to defend our beautiful corner of RI at the EFSB hearings. It will be very busy this late summer and fall with hearings proceeding and the town's defense expanding. I would like to thank ALL the people who continuously fight the CREC. I am grateful to all for the commitment and motivation displayed. It's a great feeling to know we have each other's backs.

As always, I must thank all the people who support the Burrillville Prevention Action Coalition, BPAC. This group does critical work combating drug and alcohol abuse in our schools and town. Our members are from the police and fire departments, the school administration and staff, our sports coaches, our healthcare workers, our librarians, various clergy leaders, and many concerned townspeople. The new BPAC Coordinator and new Burrillville Addiction Assistance Recovery Coach have been doing magnificent work, and I would encourage everyone to attend one of these meetings. The issues demand that we all engage to help our students and neighbors. BPAC meetings are held on the first Wednesday of the month at 5 p.m. in the Wallace F. Lees Safety Complex.

Naturally, I would like to write about one of Austin T. Levy's many gifts to the people of Burrillville, The Assembly Theatre, where our resident theater company, The Theater Company of Rhode Island, performs. The theater also plays host to many other live performances throughout the year. There are also movie showings on the big screen using new state-of-the-art video and sound systems. Please sign up for email alerts concerning dates and times at boa@burrillville.org or "like" The Assembly Theatre on Facebook.

In closing, I wish everyone a safe, healthy, happy winter and holiday season and look forward to seeing you around our beautiful town.

Go Broncos!

John F. Pacheco, III
Town Council President



Michael C. Wood

Town Manager

FY2019 Budget (July 1, 2018 – June 30, 2019)

A well-rounded education for our students is a most important mission, but that mission is jeopardized by current state law governing school (education) aid and charter schools. State law ties school aid to student enrollment.

By now we have received our tax bills. This was a very difficult year to set a budget and keep real estate taxes as low as possible. This year, Burrillville student enrollment decreased resulting in a revenue loss of approximately \$750,000.

Charter schools have been set up in a way that has a double-dipping financial impact. It negatively impacts revenue (aid) and simultaneously increases mandated expenditures to charter schools.

Compounding this problem is a siphoning of Burrillville students to other Rhode Island public schools.

It is truly a Catch-22 scenario. Because education aid follows the student, it becomes difficult to maintain existing programs and to develop and offer new and competitive programs.

The options are limited. Raise more money through local property taxes to compensate for lost education aid and/or cut the teachers, classes and programs that were being funded by the education aid that was lost.

Once the siphoning of students starts, reversing it is difficult unless local educational programming can remain competitive with or superior to those school districts who are accepting our students and receiving the related revenue that is transferred to that school district or charter school from Burrillville!

In my opinion, this is a direct result of questionable state policy and related legislation.

Legislation

In the spring-summer 2018 edition of The Bugle, I laid out a number of important legislative goals and objectives set forth by the Rhode Island League of Cities and Towns.

A full list of legislative goals and objectives is continued in the spring edition of The Bugle. Past editions of the Bugle can be found by going

to <https://www.burrillville.org/town-manager/pages/burrillville-bugle>

The areas of concern include:

- Car tax revenue,
- Municipal rubbish and recycling (tipping) fees,
- Union contract perks impacting state and municipal union contracts, which included mandatory arbitration requirements and automatic extensions of union contracts that are at impasse,
- Land use laws impacting our ability to use and manage private property,
- Enhanced benefits for certain municipal employees who may be (or will be) on work-related injury status,
- Frequency and cost of mandated local property revaluations,
- Public policy on renewable energy.

If you want to find out how Mr. Fogarty, Mr. Keable or Mr. Newberry voted on these important issues, please go to:

<http://webserver.rilin.state.ri.us/legislation/>.

Statistical Revaluation

The current state law that requires property revaluations every 3 years was not changed by the state legislature and Governor. As a result, the town will be performing a statistical revaluation this summer and fall. Property values as of December 31, 2018 will be impacted and next year's tax bills will reflect the results of that revaluation.

The housing market has improved, which means that most home values have gone up. That is obviously a good thing for property owners. Most people think that if their property value goes up, their local tax bill will automatically go up as well. However, that is not the case for the majority of property/home owners. The town adjusts the tax rate (lower) to compensate for higher property values resulting from the mandated revaluations. So, all things being equal, and assuming most properties fall within the average increase of values town-wide, local taxes should not be impacted simply because of the revaluation process.

Local taxes are impacted by revenue received and expenditure budgets. As noted earlier in this Bugle article, if revenue (such as school aid) changes or there are budget increases, that will impact local taxes.

Energy Siting Act (ESA)

In 2016, the Town Council prioritized an important legislative initiative to modify the state law that sets forth the process to review and approve energy facilities, including power plants.

The existing law (ESA) is over 30 years old and is not, in my opinion,

structured to protect the interests of Burrillville or any city or town hosting these facilities.

The existing law does not allow a city or town that hosts these facilities any legal standing to approve (or not) those facilities.

Burrillville is prime territory for these facilities because both high capacity natural gas delivery lines and electric power lines run right through the town. So, whether it's now or sometime in the future, power companies will be looking to build facilities here.

Legislation submitted in both 2016 and 2017 failed to make it through into law and the Governor was absolutely no help!

Based on our experience with the Invenergy power plant proposal, a complete overhaul of the ESA is imperative! If not, it will be extremely expensive (hundreds of thousands of dollars) for taxpayers with absolutely no assurances that the town's interests will be protected! This is UNACCEPTABLE!

Economic Development

The Town Council and Redevelopment Agency are continuing redevelopment efforts in Stillwater and downtown Pascoag. Both are coming along nicely. Little by little we are making progress in these important villages. Both require patience and PERSEVERANCE.

We continue to improve the town's industrial parks and isolated areas of the town when an opportunity arises. The latest improvement is to install a new water line from Commerce Park to Clear River Drive. This will loop the water system for safety and to provide water to the villages served by Harrisville Water District and Commerce Park in emergency situations.

A new economic development initiative is underway in Nasonville. Community meetings will resume this fall so that the planning to enhance existing attributes of the village, address existing problems, and to find proactive solutions addressing the needs of the village are community based.

Downtown Pascoag

The Redevelopment Agency is now looking for tenants for its new building on Pascoag Main Street. Street level commercial/retail/office space will be available as early as October.

Total space available is 4,500 square feet and of that 3,400 square feet is available for lease or rent. Current plans have three (3) new units available ranging in size from 850 to 1350 total square footage. The

space is flexible and could be increased (or decreased) if needed and the space can be modified to accommodate a number of uses.

Please contact the Town Manager, 401-568-4300 Ext. 145 or the Town Planner at 401-568-4300 Ext. 130 if there is interest.

From the Administration

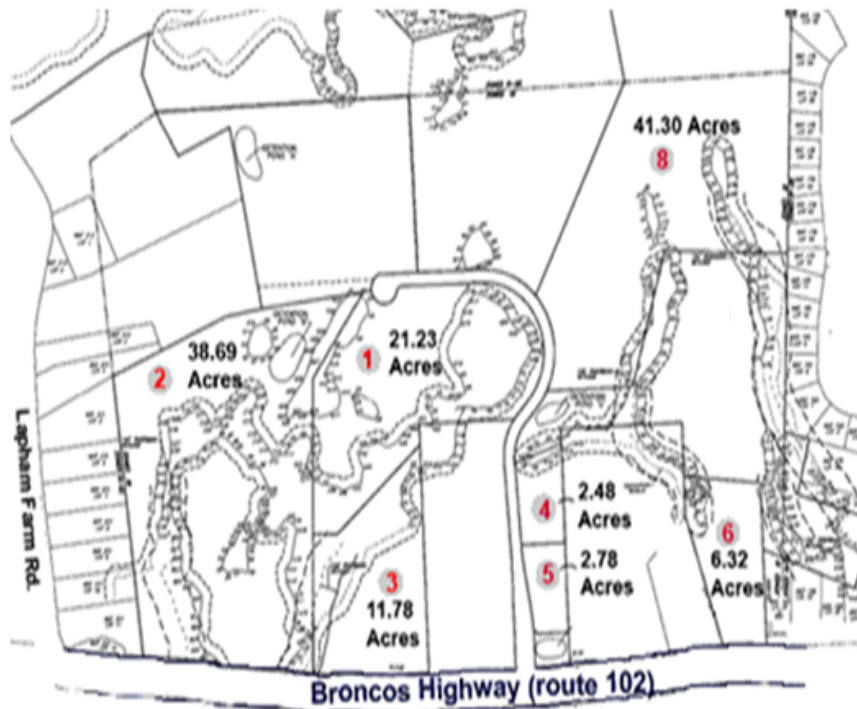
The end of summer is near. Fall and winter are coming. It's a beautiful time of year here in Burrillville. We wish everyone the very best, and even though the holidays are a few months away, have a safe and healthy holiday season.

Please remember to support Burrillville's local business, vendors and retail establishments!

We are looking for businesses generating jobs.

*The town has acreage for sale (with water and sewer available at
Commerce Park.*

If you or someone you know is looking to locate or expand a business, please contact the Town Manager or Town Planner at 568-4300 ext.145 or 130. Commerce Park is Located off Route 102 between Central Avenue and Lapham Farm Road.



Burrillville Redevelopment Agency

James Langlois, Chairman

Stillwater Mill Redevelopment Center

The Stillwater Mill Pavilion has received two new metal picnic tables to replace worn and damaged wooden tables. These tables that seat 8 are metal mesh and tubular construction with a powder coat finish that will extend useful life of product.

An electric car charging station is coming to the Stillwater Mill Center. Recently, the town was awarded \$60,000. from the State's Office of Energy Resources to install up to 2 electric vehicle charging stations. One will be at the Stillwater Mill Center in the small parking lot near the Playground/Park. There will be signage to guide you. Charging will be free during introductory period.

The Redevelopment Agency is considering installing permanent rest room facilities at the pavilion. This would help alleviate usage of the Library's facilities during public events and make renting the pavilion for private functions more attractive. It is our hope to have new facilities installed for the summer 2019.

Did you know there is a canoe/kayak launch providing access to Clear River at the Stillwater Mill Center? It is located at the south end of the Clocktower Building and can be accessed at the beginning of Central Avenue. Watch for the sign on left just before entrance to Stillwater Heights.

Downtown Pascoag Redevelopment District



After several years of demolition and new construction, the new buildings at 75/81 Main Street and 74-84 Main Street are ready for occupancy. At street level, Well One Health Care will expand its services by occupying a portion of 74/84 Main, and we are awaiting a tenant for the radiology section. The upper level consists of 5 housing units provided by NeighborWorks Blackstone Valley /Greenridge Associates, LP and have been occupied since mid-summer.

75/81 Main Street will house Retail/Commercial/Professional space at street level. Space can be divided to meet the needs of a potential tenant. The agency is providing rough space with finished fit out the responsibility of lessee. For further information contact Scott Gibbs at New England Economic Development Services, Inc at 401-658-0665.

Upper levels of this building will feature 16 housing units provided through NeighborWorks Blackstone Valley and Greenridge Associates, LP.



Welcome to Pascoag!

New signs will be installed on the common area near the Bridgeway and at the end of Sayles Avenue facing South Main Street / Route 100. Helping to define the village, a brief history of the mills that once operated in the village and a short story on the origin of the name Pascoag will be on backside of signs.



Nasonville Redevelopment and Village Planning Project

Two key components of this plan include the rehabilitation of the old Turex Mill complex at the corner of route 102 and Route 7 and the Stone Arch bridge that crosses the Branch River at intersection of Route 7 and Victory Highway. The agency has retained the services of Crossman Engineering to work with the Rhode Island Department of Transportation to develop a plan for the bridge that will improve traffic flow and accommodate safe pedestrian travel crossing the bridge and intersection. If approved by DOT, these improvements will allow plans for the mill site to continue as the central component of the Nasonville Village Redevelopment.

Finance Director

Michael P. Larocque

FYE 2018 Audit

The audit for fiscal year ending June 30, 2018 is currently under way and will be completed before the end of the calendar year. The Town continues to maintain a strong financial management operation.

Debt

The Town of Burrillville has entered into a \$700,000 drinking water loan through the RI Infrastructure Bank to construct improvements to the water system. The borrowing will provide the construction component and the Harrisville Fire District will provide the pipes for the project.

A Message from the Finance staff

In our last issue of The Bugle, we thanked the Board of Administration for the updating of our offices with fresh paint and new flooring. We'd like to thank them again for the new carpeting within the halls of Town Hall. What an improvement!

2018 Tax Bills

The 2018 Real Estate and Motor Vehicle taxes were mailed July 10, 2018.

All delinquent 2018 taxes are assessed interest at a rate of 12% per annum.

<u>Real Property, Motor Vehicle & Tangible 2018 Bills</u>
--

Due dates are as follows:

- 1st Qtr. - July 26 thru August 13, 2018
- 2nd Qtr. - October 15 thru November 1, 2018
- 3rd Qtr. - January 15 thru February 1, 2019
- 4th Qtr. - April 15 thru May 1, 2019

Need a reminder?

Sign up on our website "**E-subscribe**" to receive quarterly reminders of upcoming due dates. Be sure to check off "Tax Collector".

"Go Green"

Help us save you money by supplying our office with an **email address**. Receive payment receipts, correspondence, notices. Copies of your Tax Bills can also be received upon request through the Tax Assessor's Office.

Payment methods:

Cash, check or money order is accepted by mail or in the office.

**What are the benefits to using our Free
AUTOMATIC CLEARING HOUSE (ACH) or (Auto Debit)**

1. Eliminate blocks at the Division of Motor Vehicles,
2. Have 2 extra months to pay your tax bills when paying monthly,
3. No interest charges,
4. Save on postage,
5. No worries about payments being lost in the mail,
6. Receive monthly reminders of debit.

Applications are available online at www.burrillville.org or in the Tax Office. Please allow one week to set up or cancel the debit in writing or email. *Important Note: when using online bill pay thru your bank, we actually receive a physical check not an electronic payment, which allows for delays and/or lost payments. If a release to the DMV is needed, these checks cause a 10 business day delay.*

DEBIT OR CREDIT CARD in office or online at www.burrillville.org.

NO payments accepted over the phone. Your PIN is listed on your tax bill. If you do not have your bill, please contact the Collector's Office. **All card payments are assessed a convenience fee of 3% with a minimum of \$2.00.**

DROP BOX is available near the rear entrance of the Town Hall for your convenience. Please **do not put any cash in the drop box** checks and money orders only.

Any returned checks/ACH are assessed a \$35.00 fee.

The Town participates in state programs such as placing blocks with the RI Registry of Motor Vehicles (DMV) and RI Income Tax Refund Offset program to aide in the collection of delinquent taxes.

Did not receive a bill?

The failure to receive a bill does not eliminate the requirement for a timely payment of any taxes that are due. Need a copy of your bill, contact the Tax Assessor's office 568-4300 x 181.

Contact the Tax Collectors office for balances due 401-568-4300 x 184.

Returned mail is re-mailed if a new address can be identified. If you move, please contact the Tax Assessor's office and the DMV to up

date your mailing address.

Tax bills are mailed by the 2nd week of July each year. If you do not receive a bill, please contact the Assessor's Office.

Motor Vehicle Registrations/Renewals

Registration blocks are sent to the DMV for all delinquent motor vehicle taxpayers. If a block is placed with the DMV, ALL motor vehicle taxes under your name must be paid in full by cash, money order, or credit card. A personal check will delay the release by 10 business days. Note, the registration block may take up to 48 hours to be released by DMV after the request for release is made by the Tax Collectors office.

Financial Difficulties?

If you are having financial difficulties, please contact the Tax Collector's office as soon as possible. Early intervention is the key to the Town's ability to be of assistance.

Tax Assessor

Jennifer Mooney

Office Hours: Mon thru Wed 8:30 a.m.- 4:30 p.m.,
Thurs 8:30 a.m.– 7:00 p.m. and Fri 8:30 a.m.-12:30 p.m.
401-568-4300 Ext. 125 or 126

All taxpayers are welcome to stop in the Assessor's Office for a copy of your property record card and the Assessor's map showing your land lines. There is no charge to the homeowner for this information.

Property Tax Revaluation

The Town of Burrillville has contracted with Vision Government Solutions to conduct a State mandated property tax revaluation. The goal of the revaluation project is to determine the market value of all taxable properties within the Town as of December 31, 2018. The last revaluation was conducted in 2015. The 2018 revaluation is a statistical revaluation that will include interior and exterior inspections of all recently sold properties and also for properties with open permits.

Out of State Vehicle Registrations

If you have moved in the last year, please check with the Assessor's Office to be sure your current address is on file with us. The law requires you to notify the Division of Motor Vehicles within 10 days of any change of address if you have any registered vehicles.

State Law prohibits Rhode Island residents from registering their vehicles (plates) in another State and garaging or keeping the vehicle in Rhode Island subject to certain exemptions. Rhode Island General Law, Chapter 31-7 addresses the requirements of the law, as well as exemptions from the law.

As Of June 1, 2014, the Burrillville Police Department began enforcing the State Law.

Burrillville residents garaging out of State vehicles in Burrillville should contact the Town Assessor's Office for information. Out of State registrations that qualify for an exemption must file an annual report with the Assessor's Office at Town Hall to avoid potential violations.

Phase-Out Program

The State passed the Motor Vehicle Phase-out Program in 2017. We are currently in the second year of the phase-out which uses the State's values and, by State law, the Town must charge excise tax on 90% of the value. Vehicles that are 15 years old or older are no longer taxed. The Assessor's Office will be able to explain how your value and tax were calculated. Please keep in mind that the Town has no control over and cannot change the value of the vehicles.

Exemptions

Exemptions available to Burrillville taxpayers include Senior, Disability, Blind, Veterans, Prisoner of War and Gold Star Parent and a Historical Cemetery Preservation Property Tax Abatement. The Senior and Disability Exemptions are income based and must be renewed annually. To qualify for a Senior exemption you must be 62 years of age and you must have owned and occupied residential property in Burrillville for 3 years prior to the filing of the application. Applications must be received by December 31, for the next tax roll. There is one Senior exemption allowed per household. If you qualify, please stop in to the Assessor's Office with proof of age.

The Disability exemption is available to taxpayers who are totally disabled and receiving benefits. A copy of the "Notice of Award Letter" is required to receive the exemption. Each year upon renewal you must submit a copy of your "New Benefits Letter" to receive the exemption for another year. If you have any questions with regards to available exemptions, please call the Assessor's Office at 568-4300, ext.125.

Exemption Application Deadlines

December 31, 2018 for Seniors and Veterans

January 31, 2019 for Disabled

Qualified exemptions will be applied to the 2019 tax bill.

Town Clerk

Louise R. Phaneuf

Town Building Hours
Mon – Wed: 8:30 a.m. – 4:30 p.m.
Thurs: 8:30 a.m. – 7:00 p.m.

No Land Evidence is recorded during the last half hour of any day.

The Town Clerk's office now accepts credit and debit cards. Transactions will be charged 2% of total fees + \$1.00. You may pay with cash or check without extra fees.

Services Provided at the Town Clerk's Office

- | | |
|--|----------------------|
| ◆ Marriage Licenses | ◆ Notary Public |
| ◆ Birth, Marriage and Death Certificates | ◆ Probate Court |
| ◆ Dog Licenses | ◆ Recorder of Deeds |
| ◆ Hunting & Fishing Licenses | ◆ Voter Registration |

Fishing Licenses

Starting in 2018 Rhode Island Department of Environmental Management (DEM) will no longer use paper forms to apply for licenses and permits. They provide a fully web-based system for the issuance of fishing and hunting licenses and permits. The new system is part of DEM's ongoing efforts to improve customer service and to streamline their processes.

Key benefits of this new system include:

- Apply for and print licenses and permits at home.
- Licensees will be issued a unique I.D. number to be used each year.
- All licenses and permits will be listed on one document.
- Licenses can be reprinted if needed.

The Town Clerk's Office will continue to be an authorized sales agent for the DEM and will be able to issue all of the licenses and permits offered by DEM, including (but not limited to) deer and turkey permits, through the new eGovernment Services system. There is an Enhance Access Fee of \$2.00 per license and \$0.50 per permit for residents and \$3.00 per license and \$1.00 per permit fee for nonresidents.

The DEM will continue to offer fishing licenses for sale through their website at: <https://www.ri.gov/DEM/fishinglicense/>. The fees are paid with a credit or debit card only. There are no Enhance Access Fees charged when purchasing licenses and permits directly from DEM on their website.

Permanent Fishing/Combination Licenses

Persons who are 100% permanently disabled are eligible for a fishing/combination license at no charge. This license is available at the Town Clerk's office. Applicant must show their original letter of the final decision showing the expiration date of the decision. This is the letter SSI/SSDI sends every year. Persons over 65 are also eligible for a fishing/combination license at no charge. All over-65 licenses require identification. Permanent licenses for over-65 are available at the Town Clerk's office. There are no Enhance Access Fees for this license.

Notary Public

Notary public services are available at the town building during regular hours. There is no fee for this service.

Contact your elected officials

There are many ways that residents can keep up with Council activities.

- The Town Council's web page is updated regularly. There you can find reports, agendas, minutes, resolutions and policies.
- Each councilor has a mailbox at the town building. Correspondence can be dropped off or mailed there.
- To see the council in action, stop by a meeting, held the 2nd and 4th Wednesday at the town building.
- If you have ideas or information you'd like to see on our website, contact your local councilors.

Town Council Members			
Name	Address	Phone	Term
John F. Pacheco III	901 Colwell Road Harrisville, RI 02830	309-1437	11/30/20
Stephen N. Rawson	P.O. Box 332 Harrisville, RI 02830	479-6909	11/30/18
Jeremy Bailey	585 Wallum Lake Road Pascoag, RI 02859	402-0289	11/30/20
Donald A. Fox	105 Harrisville Main St. Harrisville, RI 02830	265-9674	11/30/18
David J. Place	167 Jefferson Road Harrisville, RI 02830	286-2088	11/30/18
John Anthony Scott	105 Harrisville Main St. Harrisville, RI 02830	568-4300	11/30/18
Ray Trinque	300 Centennial Street Pascoag, RI 02859	568-0858	11/30/20

Town Council

Regular meetings of the Burrillville Town Council are scheduled for the second and fourth Wednesday of each month at 7:00 p.m. in the Town Council Chambers, Town Building, 105 Harrisville Main St., Harrisville, RI 02830. Schedule changes are posted at the town building and on the town website.

To appear before the Town Council, contact the Town Clerk's Office for the procedure for submitting an agenda request.

At least 48 hours prior to any town council meeting, agendas are posted at the town building, the Jesse M. Smith Memorial Library, at the Harrisville Post Office and on-line at the town's website at www.burrillville.org.

The Town of Burrillville will provide accommodations needed to ensure equal participation. Please contact the Burrillville Town Clerk at least three (3) business days prior to the meeting so arrangements can be made to provide such assistance at no cost to the person requesting it. A request for this service can be made in writing or by calling (401) 568-4300 (voice) or "via RI Relay 1-800-745-5555" (TTY).

Burrillville Video Archives

To access a Town Council meeting on the internet:

- 1) Visit www.burrillville.org
- 2) Click on **Government** tab at the top of the home page
- 3) There is a link to meeting videos at the bottom of the right-hand column

Minutes & Agendas

Town Council agendas, minutes and videos can be searched from the video archives page. Use a key word in the "search archive" feature on the page. The search result will be a link to the point on the video where the searched item was discussed. The result will also include the agenda and minutes where the item is mentioned.

Other ways to view ! Public Access Television



Burrillville Council meetings are aired on Public Access television. That's Channel 18 on Cox and Channel 22 on Verizon. Public access shows the most recent meeting, usually for two weeks. Usually, Public Access airs Burrillville Town Council meetings on Tuesdays at 8:00 p.m. and Fridays at 4:30 p.m.

Vital Records

Birth records available statewide.

Certified birth records for people born in Rhode Island in 1960 and later can be issued at all city and town clerk's offices. Certified birth records

for people born in Rhode Island before 1960 must obtain a copy of their birth certificate at the city or town hall where their mother was living when they were born. The record can also be obtained in the city or town hall where they were born (that is, where the hospital is located).

You can also obtain a copy of a record for a birth or marriage that occurred less than 100 years ago or a death that occurred less than 50 years ago by writing to the Office of Vital Records, Room 101 Cannon Building, 3 Capitol Hill, Providence, RI 02908-5097. Please be advised that in most cases, you will receive your records more quickly from the city and town locations.

Birth, Death & Marriage Certificates

- The Town Clerk's Office provides certified copies of birth, death and marriage records.
- NEW FEES: As of July 2018 the fee for records requested by mail are \$25.00; fees for records requested in person in the Town Clerk's office are \$22.00. Additional copies of the same record are \$18.00 if obtained at the same time.
- Birth and marriage records that are 100 years old or less and death records that are 50 years old or less are confidential.

Who can apply or obtain vital records?

Vital records are confidential. Therefore, only those individuals who have what is called a "Direct and Tangible Interest" in the records may have access to records. The following individuals and/or groups make-up those having direct and tangible interest:

- The person named on the certificate, a member of his/her immediate family, his guardian, or an authorized agent of these individuals.
- Attorneys-at-law, title examiners, or members of legally incorporated genealogical societies, in the conduct of their official duties.
- Persons requiring information for the determination or protection of a personal or property right.
- A person who has been granted a court order instructing the registrar to provide disclosure.

Vital records by mail

The Burrillville Town Clerk's Office will accept a mail request for a birth, marriage or death record. The certified copy is usually mailed to the applicant on the same day the request is received in the Town Clerk's Office. To receive a certified copy of a birth, death or marriage record via mail, you must send a readable copy of your picture identification and a completed application which you can find on the Town Clerk's page of

the Town website. If you cannot access the application, please provide the following information:

- the name on the birth, death or marriage record
- the date and city/town where the event occurred
- your relationship to the person named on the record
- why you need the record
- births only, provide the name of the father and the mother's maiden name
- your signature and printed name
- your mailing address and your home phone number in case we need to contact you.

Please send payment with your request. The fee is \$25.00 for the first copy. Additional copies of the same record are \$18.00 if obtained at the same time.

Marriage Licenses



Rhode Island residents:

Couples should apply for a marriage license at the Clerk's office in the city/town where one (or both) of the parties reside. If at least one of the parties lives in Rhode Island, the marriage license is valid in any city or town and the ceremony may take place anywhere in Rhode Island.

Non-residents:

If neither party lives in Rhode Island, the license must be obtained at the Clerk's office in the city or town where the ceremony will take place.

- Both partners are responsible for presenting proof of birth facts (preferably a certified copy of the birth certificate) and a valid form of identification.
- If previously married or in a civil union, a certified copy of the final decree of divorce or dissolution of the civil union (with the raised or original stamped court seal), or a certified copy of the death certificate of the deceased previous spouse.

Marriage licenses cost \$24. The license is valid for 90 days.

Burrillville Volunteer Opportunities

The Burrillville Town Council has established more than a dozen boards, commissions and committees comprised of resident volunteers. If you would like to volunteer for a committee, please complete the application on our website:

<https://www.burrillville.org/home/files/board-volunteer-application>



Burrillville Board of Canvassers

Blanche Boisvert, Chair
Anita Hurley-Diez, Vice Chair
Leslie Bowen
James Alix, Alternate
Louise R. Phaneuf, Clerk

The Board of Canvassers is located at the Town Clerk's Office and is available during Town building hours.

Election News

2018 General Election

A general election will be held in Rhode Island on November 6, 2018. All of Rhode Island's executive officers are up for election, as well as a United States Senate seat and both of Rhode Island's two seats in the United States House of Representatives. In addition, there will be local races of interest. These include Senator in General Assembly District 23, Representative in General Assembly Districts 47 and 48, as well as Town Council and School Committee.

The last day to register to vote in the 2018 general election is Sunday, October 7, 2018. The Town Building will be open from 9:00 a.m. to 4:00 p.m. on October 7th only to accept voter registrations.

Polling Locations

Please check the Town website or contact the Board of Canvassers

<u>Precinct 1</u> Steere Farm Elementary	<u>Precinct 2</u> Beckwith-Bruckshaw Memorial Lodge	<u>Precinct 3</u> Burrillville High School
<u>Precinct 4</u> Callahan Elementary	<u>Precinct 5</u> Burrillville Police Station	<u>Precinct 6</u> Burrillville Middle School

at (401) 568-4300 Ext. 132
if there is any doubt about your polling location.

Rhode Island Voter Information Center:

<http://www.sos.ri.gov/elections/voters/>

- Check your voter registration
- Find your current elected officials
- View sample ballots for upcoming elections
- Locate your local board of canvassers
- Find where to vote



How do I register to vote?

You can now register to vote online at the Voter Information Center: <https://vote.sos.ri.gov/>. Here you can register to vote, check your voter registration and find your polling location. You can also register to vote in Rhode Island by completing a voter registration form which may be obtained at the Burrillville Board of Canvassers at the Town building or the RI Board of Elections. Any Rhode Island citizens who are at least 16 years of age may preregister to vote. You can download the form from the State Board of Elections website: www.elections.state.ri.us. Many agencies which serve the public, such as the Department Human Services, and the Department of Mental Health offer voter registration services to their clients as mandated by the National Voter Registration Act. Now, when you interact with the Department of Motor Vehicles, you will be automatically registered to vote.

Election Officials Needed

In order to serve as a poll worker you must:

- Be registered to vote in Rhode Island.
- Be able to read the Rhode Island Constitution in English.
- Be able to write your own name.
- You cannot serve as a poll worker if you are a convicted felon.
- You cannot serve as poll worker in a primary if you are a city, state, or federal employee.

You must attend a training class that may exceed three hours. You must be available to work the day of the election, from 6:00 a.m. until approximately 9:00 p.m. You cannot leave your assigned polling place for any reason; this includes voting, lunch, or dinner breaks.

High School Students: You may be eligible to work at the polls if you are at least 16-years-old, a junior or senior, have at least a 2.5 GPA, and receive permission from school officials. Contact your Board of Canvassers for more information.

Find the application form online at www.burrillville.org or visit your Board of Canvassers Office, 105 Harrisville Main St., Harrisville

Voter ID

Voter ID became law in 2014. Under this law (RIGL §17-19-24.2) all voters are required to present valid photo identification prior to voting at the polls. Voters will need to present one of the following forms of photo ID:

- RI Driver's License/Driver's Permit
- RI Voter ID Card *



- U.S. Passport
- Photo ID issued by a U.S. Educational Institution
- U.S. military photo ID
- Photo ID card issued by the United States or the State of Rhode Island
- Government issued medical card with photo
- ID Card issued by any federally recognized tribal government

*The Rhode Island Department of State is issuing free voter photo ID cards to individuals who do not possess any of the valid Photo IDs listed above. See the Department of State's website for additional information on the program, or call (401) 222-2340.

Protecting Your Vote

No eligible voter will be turned away at the polls. Voters who do not bring ID to the polls can vote using a standard provisional ballot.

Find more about Voter ID at www.sos.ri.gov

Mail Ballot Overview:

Any otherwise qualified Rhode Island voter may vote by mail ballot in the following circumstances:

1. A voter within the State of Rhode Island who is incapacitated to the extent that it would be an undue hardship to vote at the polls because of illness, mental or physical disability, blindness or serious impairment of mobility.
2. An elector who is confined in any hospital, convalescent home, nursing home, rest home, or similar institution, public or private, within the State of Rhode Island. <http://www.elections.ri.gov/voting/nursing.php>
3. An elector who will be temporarily absent from the state because of employment or service intimately connected with military operations or who is a spouse or legal dependent residing with that person, or a United States citizen that will be outside of the United States. (Please Note: any voter qualified to vote a Category 3 Mail Ballot will also be allowed to cast a mail ballot pursuant to the Uniformed and Overseas Citizens Absentee Voting Act "UOCAVA Act" <http://sos.ri.gov/elections/voters/overseas/>)
4. An elector who may not be able to vote at his or her polling place in his or her city or town on the day of the election (see "No Excuse Mail Ballot Voting" below).

All mail ballots must be received by the State Board of Elections at 50 Branch Avenue Providence, R.I. 02904 by 8:00 P.M. the night of the election.

No Excuse Mail Ballot Voting

Rhode Island now allows "no excuse mail ballot voting". If you may not be able to get to the polls on Election Day, you can fill out a mail ballot application and receive a mail ballot.

More on voting by mail

Applying for a Mail Ballot

<http://www.elections.ri.gov/voting/applymail.php>

Emergency Mail Ballots

<http://www.elections.ri.gov/voting/emergency.php>

Military and Overseas Voters

<http://sos.ri.gov/elections/voters/overseas/>

Elections Publications

The Rhode Island Department of State prepares many elections-related publications, including a guide for candidates and elections calendars.

When published, you can find a copy online at their website:

<http://sos.ri.gov/divisions/Elections/Get-Informed/election-publications>.

Copies are also available at the Burrillville Town Building.



Burrillville Extended Care

Kelly E Cournoyer, Director

P.O. Box 351, Harrisville RI 02830

Telephone 568-1356 Ext. 2

e-mail: kcournoyer@burrillville.org



"Play gives children a chance to practice what they are learning." ~ Fred Rogers

The mission of the Burrillville Extended Care Program is to provide a program of quality before and after school care during the school year and full-day care when school is not in session. We aim to provide care that is safe, reliable, and affordable care that benefits the child, his or her parents, and the entire Burrillville community.

There are two components to the BEC Program:

- **Before and after-school care:** Children must be enrolled in the Burrillville School Department and have begun kindergarten in order to be eligible for this program. They remain eligible through the end of their fifth grade year.
- **Care provided on school holidays and vacations (including summer vacation):** Children must be enrolled in the Burrillville School Department and have begun kindergarten. They may con-

tinue to participate until they finish their seventh-grade year or reach the age of thirteen.

BEC Tuition Charges (per day per child)

- Morning care (6:30 a.m. to 8:30 a.m.)\$ 9
 - Afternoon care (3:00 p.m. to 6:00 p.m.) \$13
 - Full-day care (vacations, holidays, summer) \$33
- Note:** a 15% discount applies to each additional child.

Looking to register your child for before/ after-school care?

**How about full day care during school vacations / holidays
or our Summer program?**

We have registration forms available on the website. Also, you may stop by the BEC Main Office during our normal hours of operation to pick one up. (located behind Steere Farm School, 915 Steere Farm Rd.) If you have any questions please call the BEC Main office at 401-568-1356, ext. 1.

2018-2019 School Vacation / Holiday Schedule
Days BEC will be OPEN

September 12, 2018	Primary Election Day
October 9, 2018	Staff Development Day, Burrillville
November 6, 2018	Election Day
November 12, 2018	Veterans Day
November 21, 2018	Thanksgiving Recess (<i>Closed 22nd & 23rd</i>)
Dec. 26, 2018 to Jan. 1, 2019	December Holiday Recess
January 21 st , 2019	MLK Jr. Day
February 18 th & 19 th , 2019	Winter Recess
April 15-19, 2019	April Vacation / Good Friday Recess

Visit our website for the latest news, updates forms and handbooks:
<http://www.burrillville.org/burrillville-extended-care-program>

Police Department
Colonel Stephen J. Lynch, Chief
1477 Victory Highway, Oakland
401-568-6255

WINTER PARKING BAN: A reminder that Burrillville Town Ordinance 6-1.3 states, “no motor vehicles are permitted to park on any street within the Town of Burrillville between the hours of 1:00 am and 6:00 am from November 1 through March 31 inclusive.” The fine for parking on the streets during these hours is \$15 for each offense. Fines not paid within 7 days will double. Appearance at the Burrillville Municipal Court will be required for those not paying fines, or those wishing to contest a ticket. Any court appearance which does not end in a dismissal will have court costs of \$50 assessed.

NEED HELP SHOVELING SNOW? If you are a senior citizen, have a disability, or are dealing with an injury preventing you from shoveling, we have the help you may need. The Burrillville Police Department and students of Burrillville High School have teamed up to help you shovel during the winter. There is no fee for this service as all students are working for community service hours. All interested Burrillville residents who meet the requirements may complete the required registration, available at the police station, or our website at:

<http://www.burrillville.org/police-department/news/need-help-shoveling-snow> Questions can be directed to Officer Veader at 401-568-6255.

CITIZENS POLICE ACADEMY: The next Burrillville Citizens Police Academy is scheduled to begin in March of 2019. Applications for this fun, educational, interactive program for adults (and young adults with parental permission) are being accepted now. Seats fill fast and are given on a first-come, first-served basis. Pick up your application at the police station or go to our website www.burrillville.org/police under “downloadable forms.” More information is also available on the website under “community policing programs.”

MUNICIPAL COURT PAYMENTS – ONLINE PAYMENTS AVAILABLE: The Burrillville Municipal Court now accepts online payments for pay-by-mail traffic tickets. Please note that this service is available ONLY for tickets which have not been adjudicated, and there is a fee involved for the use of a credit or debit card. The website is www.curiasystems.com/payment and outlines the fee schedule. If you cannot find your summons number on this site, please contact the court

directly at 401-568-9494 ext. 1. Fines may also be paid via phone with a credit/debit card, in person, when the clerk is available, or, any time, with a check/money order placed in the secure dropbox located inside the Burrillville Police Department lobby. Court convenes the first and third **Mondays** of each month at the courtroom located within the administration building of the police department. The mailing address for the Burrillville Municipal Court is P.O. Box 419, Harrisville, RI 02830.

E-COMMERCE SAFE ZONE: The Burrillville Police Department would like to remind the public of an E-COMMERCE SAFE EXCHANGE ZONE located at the Wallace F. Lees Public Safety Complex, 1477 Victory Highway, Oakland. With the ever-increasing number of people buying, selling, and exchanging goods through popular sites such as eBay, Craigslist, and Facebook, the Burrillville Police Department provides a safe place for citizens to facilitate their transactions and exchanges of merchandise. There are two locations at Police Headquarters for these safe exchanges, both of which are marked with signage designating them as such, and which are monitored by cameras:

- South front parking lot, adjacent to the impound fence.
- Inside the front lobby of the police station.

Please note that no appointments are necessary and you do NOT need to check in with the department when making an exchange. Also note that the Burrillville Police Department will not engage or assist in these transactions, nor will they authenticate payments or exchanges of merchandise. If you have any questions regarding this new E-COMMERCE SAFE EXCHANGE ZONE, feel free to contact BPD at 401-568-6255.

WEBSITE AND FACEBOOK: If you are on Facebook, please take a moment to look us up and “like” our page. We are striving to keep this page updated with submissions of weekly police logs and photos, as well as immediate announcements such as weather conditions, road closures, missing persons, etc. This page also gives you another avenue to contact this department with posts or private messages. Our website: www.burrillville.org/police is the place to go for general information about programs and happenings as well as access to many downloadable forms. The website is also updated regularly, so take a moment to look us up and add our website to your favorites list.

CODE RED SYSTEM: The Burrillville Police Department occasionally sends out notifications to town businesses and residents through a telephone calling system known as CODE RED. Code Red messages can be sent out for various non-emergency situations such as to notify you of a sex offender residing in your area or to inform you of programs or

initiatives run by this department. Information on emergency situations such as an Amber Alert for a missing child can also be disseminated through a Code Red announcement. What we have used it the most for, however, is notifying and updating the people of Burrillville regarding threatening weather conditions such as hurricanes and blizzards. It is very important that we keep the Code Red list up to date. You can help by accessing the Code Red database yourself to be sure the information on your family or your business is accurate. You can also add cell phones to receive either voice messages or texts, and add email addresses to receive messages. To access the database, simply go to the Burrillville website at www.burrillville.org and you will find the Code Red link under the "Residents" tab on the top of the page. The instructions are easy to follow. There is also a link to Code Red under the "Sign Up" tab on our Facebook Page.

We appreciate your cooperation in helping us make the most of the Code Red program.

B-SAFE PROGRAM: We would also like to remind you once again of a program we run called B-SAFE, which stands for BURRILLVILLE SECURITY & AWARENESS FOR THE ELDERLY. The objective of this program is to make the police department aware of elderly, handicapped, or medically fragile individuals who live in town and may need some extra assistance. It works like this: you fill out a one-page BSAFE form with pertinent information on the subject you'd like to enter into the program. This form can be picked up at Burrillville Police headquarters any time, 24 hours a day, or printed from the "downloadable forms" section of our website: www.burrillville.org/police. Once the form is received back at the station, you will receive a call from Lisa Rabideau, program coordinator, to go over the specifics. All data from this form will be entered into our computerized dispatch system, so that whenever a call for emergency services is placed from that residence, dispatchers and officers are immediately aware of any special needs of the person or persons living there. In addition, registrants may choose to receive regular phone calls where we check in and be sure everything okay. If anything is amiss, an officer can be dispatched to the residence and a family member can be contacted. If you would like more information or need a BSAFE form mailed to you, please contact Lisa Rabideau at 401-568-9494, ext. 1.

NOTARY SERVICE: You may not be aware of the fact that many members of the Burrillville Police Department are Notary Publics, and

there is normally a notary available every shift, 7 days a week. If you are in need of a notary, feel free to stop by the police department any time. This service is provided at no charge. Feel free to call 568-6255 before you come to the station to be sure there is a notary on duty and available.

VIN CHECKS: If you have purchased a used vehicle that is a 2001 model year or newer and has an out-of-state title, or you are transferring a vehicle registration from another state, a VIN check verification is required before that vehicle can be registered in Rhode Island. For your convenience, the Burrillville Police Department does VIN checks twice a day, 7 days a week – from 10 – 10:30am and 1 – 1:30pm. You must bring the vehicle with you to the police station during these times, and also must have the **original** out-of-state title and \$10 check or money order made out to the Town of Burrillville. Cash is also accepted for VIN checks but you must have the exact amount.

RECORD CHECKS & FINGERPRINTS: Many prospective employers now require state record checks (BCI check) for employees and those positions working with children often require fingerprints and a *national* record check as well. Some volunteer positions may also require these checks. Laws have changed regarding where such checks can be done. Although there are a few exceptions, as a general rule, if a state BCI check only needs to be done, you should get it done through the RI Attorney General's Office. For more information on their walk-in hours, as well as directions on how to obtain a record check by mail, go to their website at www.riag.ri.gov and click on the "criminal records" section. If you need a national record check with fingerprints, call this department at 568-6255 for more information and to make an appointment with a detective. Note that fingerprints being done for school department employees (including sub-contractors of the school department such as bus drivers/monitors and cafeteria workers) cost \$30. Also, please note that NO record checks of any kind are done for juveniles.

ALARM ORDINANCE: In 2012, the Town of Burrillville passed an alarm ordinance. Under this law, every building in town (whether business or residence) which has a burglar alarm **must register** with the police department. The ordinance can be viewed on the town website. You can also download an alarm registration form from the website or pick one up at the police station any time. If you need more information, contact the police department at 401-568-6255. Don't wait to get your alarm registered!

Burrillville Addiction Assistance Program

Michelle M. Harter, Coordinator

1477 Victory Highway, Oakland

Telephone 710-9054

mharter@burrillville.org



The Burrillville Addiction Assistance Program is a new and innovative program dedicated to serving the residents of Burrillville who may suffer from or have family members suffering from alcohol or drug addiction. The unique part of the program follows suit with many cities and towns across the country. Addiction treatment resources are available. The Town of Burrillville, in conjunction with the Burrillville Police Department, will assist those seeking to address their addiction with locating resources along with a plan for recovery and new path in life.

The program, which began on January 2 of 2018, has tremendous community support and has already delivered a bridge to detox, treatment and recovery services to Burrillville residents since that date.

You can call the Wallace Lees Public Safety Complex

at 568-6255 and ask for Extension 368

or dial directly to Michelle at 401-710-9054.

If you have questions, you can reach out to Michelle at her email listed above or on our Facebook page @ hangonpainends.



Burrillville Emergency Management Agency (EMA)
Glen Biddiscombe, Director
(401)- 641-0898
gbiddiscombe@burrillville.org



*Emergency preparedness is a team sport.
Despair is most often the result of ill-preparedness.*

Be prepared

Burrillville EMA asks you to please take the time to prepare or check over your home emergency kit, which needs to have adequate supplies for you and your family to be self-sufficient for 72 hours. Additionally, we remind you to please prepare a family plan. Visit <http://www.ready.gov> for a list of home emergency kit supplies and blank family plan forms.

If you have a medical condition that requires electricity, be sure to have a plan in place should you lose power. Again we ask that you be prepared to be self-sufficient for 72 hours. Burrillville EMA (BEMA) is available 24/7/365 to provide any assistance that may be needed at (401)-641-0898.

Hurricane Warning

Hurricane Conditions are expected within 36 hours.

Steps to take:

- Follow evacuation orders from local officials, if given.
- Check-in with family and friends by texting or using social media.
- Follow the hurricane timeline preparedness checklist, depending on when the storm is anticipated to hit and the impact that is projected for your location.

What to do when a hurricane is 6-18 hours from arriving.

- Turn on your TV/radio, or check your city/county website every 30 minutes in order to get the latest weather updates and emergency instructions.
- Charge your cell phone now so you will have a full battery in case you lose power.

What to do when a hurricane is 6 hours from arriving.

- If you're not in an area that is recommended for evacuation, plan to stay at home or where you are and let friends and family know where you are.
- Close storm shutters, and stay away from windows. Flying glass from broken windows could injure you.
- Turn your refrigerator or freezer to the coldest setting and open only when necessary. If you lose power, food will last longer. Keep a thermometer in the refrigerator to be able to check the food temperature when the power is restored.
- Turn on your TV/radio, or check your city/county website every 30 minutes in order to get the latest weather updates and emergency instructions.

Social Media

Residents are encouraged to follow us on twitter (@EMABurrillville) and also to check our Facebook page where notifications and important information will be posted when situations require.

Code Red Telephone Notification System



To ensure that your phone number is included on the call down list, or if you would like to add a cell phone number, please visit www.burrillville.org for further information. This system provides an excellent opportunity for residents to receive important information.

Rhode Island Special Needs Emergency Registry

I would like to take the opportunity to invite anyone within the Burrillville community with special needs to register on the RI Special Needs Registry at www.health.ri.gov/emregistry. This secure system allows us to keep track of those who require specialized attention during an emergency. Please sign up today or help out a family member, neighbor or friend.

Any individual, regardless of age, who has a chronic condition, disability, special healthcare need, or may require additional assistance during a time of emergency. Some examples include people who:

- Use life support systems such as oxygen, respirator, ventilator, dialysis, pacemaker, or are insulin dependent;
- Have mobility disabilities and use a wheelchair, scooter, walker, cane, or other mobility device;
- Are visually impaired, blind, hard of hearing, or deaf;

- Have speech, cognitive, developmental or mental health disabilities;
- Use assistive animals or a prosthesis.

Applications are also available by contacting BEMA at (401) 641-0898.

EMA office & Emergency Operations Center

The Burrillville Emergency Management office is located within the Burrillville Police Headquarters Complex. When extended emergency conditions exist, the municipal court / community room is transformed to an Emergency Operation Center (EOC) where all management duties including communications, logistics, and documentation are performed. The EOC is also utilized for pre-incident planning involving representatives of all town departments.

News

The Burrillville Emergency Management Agency was awarded a grant for emergency communications upgrades. We are working with the chief of police and the town's fire chiefs to plan and implement needed equipment to upgrade the emergency communication issues currently faced by the fire departments. We hope to have the upgrades in place by the end of the year.

Interested in learning more about Emergency Management?

Burrillville has an experienced staff of volunteers who respond regularly when called upon to assist during emergency situations. If interested in becoming part of our team, please contact me at any time at 401-641-0898. Please check the EMA page on the town web site for future messages regarding training opportunities. These trainings are for veteran members of our staff along with those new to the agency.

I thank all our volunteers, veterans and rookies alike for your tireless efforts during emergency situations and during Emergency Management activities for the Town of Burrillville, and remind everyone, "Preparedness begins at home." Visit our page on the Town of Burrillville web site!! _

<https://www.burrillville.org/emergency-management>

**Animal Control Shelter
Ronald J. Woods, Officer**

131 Clear River Drive, Harrisville, RI 02830
401-568-9480

Mail to: 105 Harrisville Main St., Harrisville, RI 02830
aco@burrillville.org

Under construction! The Animal Shelter is currently undergoing a much needed renovation. During construction, we are remaining on the property in construction trailers. The trailers have AC/Heat, and we will try to keep operations as normal as possible for the community. Our capacity is a bit limited, and we will make referrals to other organizations when necessary. We are very excited and are hoping to be back in the building before the end of the year. As always, you can reach us at 401-568-9480.

Have you “liked our Facebook page yet?”



Please “like” and share our page to help build our membership. We will be posting news, educational material, lost/found pets, links to adoptable pets, donation requests, and fundraising info on our page.
<https://www.facebook.comBurrillvilleAnimalControl> .







With fall upon us, the holidays will approach quickly. Please remember that pets are rarely a good gift idea. If you are considering giving a pet as a gift, make sure that the person receiving it truly wants a pet and is capable of caring for it physically and financially. Pets require a commitment of time and money, and many end up in shelters because unprepared owners are unable to take proper care of them. Consider purchasing the pet supplies needed with the promise of a pet after the holidays. This ensures that obtaining a pet is not on impulse and gives the receiver adequate time to consider the best type of pet and what care it will require. Arriving in a new home during the holidays can be extra stressful on a pet with all the excess company, or absences, and noise, not to mention the additional hazards such as tinsel, ornament hooks, glass decorations, etc. For parents giving a pet as a gift to a child – remember that no matter what promises your child may make regarding taking care of a pet, the responsibility for ensuring the pet is properly cared for will be yours. After the novelty wears off, you are the ones left with the care of the pet while your children become interested in other things. Please make sure you are ready for that commitment before giving your child a pet.

When adopting a dog, please do your research. Be extra careful when adopting a dog that originates from out of state. Private rescues importing dogs from out of state are required to be licensed with RI DEM Division of Agriculture – Animal Health. There are specific health guidelines that must be followed in order to bring dogs into RI. These policies are in place to protect you, as the adopter, and pets that are already living here in the state. There have been numerous cases of illness documented in dogs brought in from the south, most often in scenarios where they have been imported by unlicensed parties that have not met the required health requirements. Please educate yourself and make sure you are adopting from a group licensed to operate in RI.



We would like to remind everyone to check their pets' vaccinations. Rabies vaccines are required for all dogs, cats, and ferrets. Although Rabies is the only legally required vaccine, other vaccines are important too. There continues to be an increase in canine parvo activity in Rhode Island and all over New England. This is a highly contagious virus which is easily transmitted. It is prevented by vaccinating, but is extremely costly to treat and can be fatal to your dog.

Reminders:

-  There is a leash law in effect for dogs. All dogs must be leashed when off the property of the owner.
-  All dogs must be licensed. Licenses can be obtained at Town Hall with proof of a current Rabies certificate.
-  We have recently seen an increase in the number of dog bites "at large". Please be a responsible dog owner and make sure that your dog is properly confined for public safety.
-  There is also a dog waste ordinance in effect. Failure to remove dog waste is an environmental and human health hazard, can transmit disease that is communicable to other animals as well as humans, and can contaminate our water ways. Please be responsible and clean up after your pet.

A note about bird feeders: They attract beautiful birds that many people enjoy watching and photographing as a hobby. But they also have a nuisance side. Feeders not only attract birds, they attract mice and other small rodents, such as rats, chipmunks, and squirrels as well as animals such as skunks and raccoons, all of which carry fleas and ticks. The white mouse plays a big role in the spread of Lyme Disease

and is an expert at invading homes, where it rapidly reproduces. The attraction of small rodents and animals is also often followed by the larger mammals that prey on them. An excess of bird feeders and the excessive birds attracted to them can cause a whole host of potential problems. Bird feces can contaminate human food and water sources, fecal dust can be inhaled into the lungs, direct contact with bird feces to a wound can result in infection, and they also harbor fleas, ticks, mites, and other parasites. Birds can carry several hundred different viral and bacterial agents. Birds can also be quite destructive to human property, causing corrosion with the buildup up bird waste. The intent of this article is to educate and ask that people be reasonable and responsible in their feeding of birds. Limiting the number of bird feeders on your property will aid in controlling the number of birds nesting in the area of your home and those that surround it. When large amounts of birds are attracted to one small area, the feeding party may enjoy watching the birds, but the consequences of the high population can cause a nuisance to your neighbors as well as a health hazard to all of you. We ask that everyone please consider limiting the number of feeders on your property and being considerate of neighbors that do not have feeders and may be affected by all of the nuisances that can accompany a large number of birds. We thank you for your consideration.

As we continue our efforts to control the stray and feral cat population, please remember that all cats are required to be spayed/neutered by the age of six months so that they are not able to contribute to the population of unwanted pets. Luckily, there are low-cost options available. Burrillville Animal Control continues to host low cost spay/neuter clinics for cats on a monthly basis. Services are provided by Dr. Ryan Loiselle of Salmon River Veterinary in their mobile surgery unit, and clinics are held on the Shelter premises. These clinics are for cats only, and the cost is \$75 which includes the spay/neuter surgery as well as Rabies and FVRCP vaccines. Registration is made by contacting Salmon River Vet at 401-793-0092, or you may visit their website at www.rimobilevet.com. Low cost spay/neuter services are also available through Ocean State Animal Coalition's RI Community Spay/Neuter clinic. This clinic provides discounted spay/neuter services for dogs and cats, with extra discounts for feral cats and pit bulls. For more information, you can reach them at 401-369-7297, or visit their website at www.oceanstateanimalcoalition.org.

Parks & Recreation
Andrea Hall, Director
92 North Main Street, Pascoag
Telephone 568-9470
E-mail: parksandrec@burrillville.org

ANNUAL EVENTS

Santa at Stillwater



The annual Santa event at the Stillwater Mill Center will be held in collaboration with the Harrisville Fire Department, Jesse Smith Library and Burrillville Farmer's Market. The event will take place on Saturday, December 8th from 1:00 to 3:00 p.m., with a blizzard date of December 15th. Enjoy hot chocolate under the Pavilion while you're waiting to see Santa. Santa will be happy to hear your Christmas wishes and will have a small gift for all who stop by. Don't forget your camera! Get your face painted in the library café and decorate cookies with Mrs. Claus in the Jesse Smith Library Community Room. Enjoy live music from the Middle School Chorus.

Santa Calling

Santa and Santa's Helpers will call children 2nd grade and under between Wednesday, December 5th through Sunday, December 9th from 5:00 p.m. to 8:00 p.m. Forms will be sent home through the schools, as well as available at the Town Hall, town website and at the Parks & Recreation Department Office. Volunteers interested in being one of Santa's Helpers are urged to contact the Parks and Recreation Department Office.

Holiday Card Contest

Children from within our schools will create a "Winter Scene in Burrillville" with the top (5) winner's holiday artwork to appear in each (5) pack of cards. Cards will be printed on recycled paper and proceeds will benefit a local family during the Holiday Season.

UPCOMING PROGRAMS

Sunshine Club

The Burrillville Parks & Recreation Department will be continuing the successful "Burrillville Sunshine Club" with the assistance of volunteers Sue Gaudreau and Holly Bisson. The club gathers once per month at the Parks and Recreation Department to make homemade gifts to share at the local nursing homes to celebrate any patient's birthdays.

that have occurred during that month. If you are interested in being part of spreading some “sunshine” to our Burrillville community members, please contact the Parks & Recreation Department at 568-9470 or e-mail us at parksandrec@burrillville.org.

Burrillville Weekend Snack Pack Program

A not for profit joint effort between Burrillville Parks and Recreation, the Burrillville Lions Club, the Jesse M. Smith Memorial Library, and the Berean Baptist Church to provide weekend food for needy Burrillville youth. This program is funded entirely by donations and is made possible by a group of volunteers who assemble and deliver the weekly bags. Contact the Parks and Recreation Department if you'd like to make a monetary or non-perishable food donation, or if you'd like to assist with fundraising efforts or monthly packing sessions. Parks & Recreation Department: 568-9470 or e-mail us at parksandrec@burrillville.org.

NEW Programs!



Guitar Lessons

Guitar lessons will take place before school this fall at Callahan School from 8 am – 8:45 am with instructor Christine Chito. Details to follow.

THE BECKWITH/BRUCKSHAW LODGE

(Community Recreation Center)

Rent the Lodge

Need a place to hold a fundraiser, birthday party, or other type event? The Community Recreation Center is available for rent on weekends. For more information contact the Parks & Recreation Department at 568-9470 or parksandrec@burrillville.org.

Program Expansion at the Lodge

The Department continues to expand programming at the Lodge. We now offer activities during school vacation weeks and the throughout the summer. If you are an instructor interested in teaching at the Lodge or if you'd like more information about our programs contact the Parks & Recreation Department at 568-9470 or parksandrec@burrillville.org.

Public Skating

Skate nights on Fridays from approximately 9:00 p.m. to 11:00 p.m. (except MLK weekend) \$5 per person. Skate rental is free! Ice times are available for birthday parties and other special occasions. Call 568-8615 or 636-2606 for more information.

ONGOING PROGRAMS

****Information subject to change****

Program	Location
After School Multi-Sport	Levy, Callahan, and Steere Farm
Art Classes	Levy, Callahan, and Steere Farm
Fencing	Levy School
Forever Fit	The Lodge
Yoga	The Lodge
Safe-sitter program	Burrillville Middle School
Zumba	The Lodge
Boot Camp	The Lodge
Photography 101	Burrillville Middle School
Guitar Lessons	Callahan
Sunshine Club	Parks and Rec Office

The Department offers a wide variety of programs and activities throughout the year. Newsletters and calendars are available at the Town Hall, the Parks & Recreation Office, the Community Recreation Center (Beckwith-Bruckshaw Lodge), or by visiting the Parks & Recreation Department webpage on the Town's website at www.burrillville.org.

To register, or for information regarding any of the Parks & Recreation programs, contact 568-9470 or via e-mail at ParksandRec@Burrillville.org.

PARK NEWS

Bike Path

Run, walk, bike, or rollerblade on the bike path! Our bike path is a 1.2 mile off-road bike path that runs along the former New York, New Haven and Hartford Railway and connects the villages of Harrisville and Pascoag. The paved path has entrances along Mowry Street and Eastern Avenue. At about the halfway point of the bike path there is a paved path with benches and picnic tables that leads towards Duck Pond. The paved path ends at a small cul-de-sac, and a dirt path continues up over a small hill toward the pond.



THIS IS AN UNSUPERVISED PARK. THE TOWN OF BURRILLVILLE WILL NOT ASSUME RESPONSIBILITY FOR INJURIES.

USE OF THIS PARK IS AT YOUR OWN RISK.

Skateboarding, rollerblading, scooter riding and BMX bicycle riding can be a HAZARDOUS ACTIVITY that may result in SERIOUS INJURY. The use of personal safety gear and equipment (helmets, elbow pads, kneepads and protective clothing) is strongly recommended.

- The use of a protective helmet is mandatory for anyone 15 years of age or younger.
- No use allowed when equipment is wet or icy. No use allowed during lightning storms.
- Please be respectful and courteous of other users and neighbors.
- Abusive, threatening or obscene language is prohibited.
- Alcohol, Tobacco and Drugs are prohibited.
- If you see someone acting inappropriately, be a mentor and a leader and share tips on skate park etiquette.
- No competitive or demonstration events are allowed without prior approval of Parks and Recreation Department.
- Keep the park clean – No glass containers inside the fenced area. Please use the town recycling and rubbish containers. No littering allowed!

In case of emergency - Police/Fire/Medical: Dial 9-1-1
Report vandalism, suspicious or criminal activity to
Police Department 568-6255 or Parks & Recreation Department 568-9470

LEAGUE CONTACT INFORMATION

****Information subject to change****

Junior Hockey	www.bjhl.org
Youth Basketball	www.byba.org
Youth Soccer	www.bgysa.org
Men's Softball	www.burrillvillemenssoftball.com
Little League	www.burrillvillelittleleague.org
Figure Skating	Burrillville Figure Skating Association (Face Book)
Youth Football & Cheer	www.eteamz.com/burrillvillepatriots
N.R.I Burrillville Softball	ASA Softball of Northern RI (Face Book)

VOLUNTEERS NEEDED

Are you looking for an opportunity to volunteer for your community? Do you need community service hours? **Volunteers are always needed to assist with our special events.** Please contact us at 568-9470 or parksandrec@burrillville.org.

SIGN UP FOR RECREATION NEWS

Subscribe to receive Recreation Department News by visiting www.burrillville.org and clicking on 'subscribe to news' tab on the left hand side of the page. Check the 'recreation news' box to sign up for email notifications regarding programs and events sponsored by the

PARKS & RECREATION: THE BENEFITS ARE ENDLESS...

Be Happier - Feel Great!

Practiced in clinical, residential and community settings, the profession of therapeutic recreation uses treatment, education, and recreation services to help people with illnesses, disabilities and other conditions to develop and use their leisure to enhance their health, independence and well being. Outdoor adventure activities for people with limited physical ability give participants feelings of success and improved feelings of confidence. There is no greater opportunity for people to experience self-actualization and the spiritual renewal, creative expression, discovery and stimulation than leisure offers.

**Benefits of Recreation taken from <http://www.nrpa.org/>*

Spring Lake Beach
Judy Lopez, Manager
50 Old Hillside Drive, Glendale, RI 02826
Telephone 568-9470
E-mail: jlopez@burrillville.org



SPRING LAKE BEACH IS CLOSED FOR THE SEASON.

We had another amazing summer at Spring Lake Beach! We would like to thank all of you who came to the beach, and participated in the new games and activities that were offered this year. We would like to extend our appreciation to our wonderful beach staff who worked hard this summer to make the beach fun and safe. Be sure to visit again next summer!



DPW, Refuse & Recycling

Andrea Hall, Recycling Coordinator
401-568-4440 ext. 12
ahall@burrillville.org

Recycling News



2018 Eco-Depot / E-Waste/Shred Event Rescheduled!!

The collection event previously scheduled for October 20th, 2018 in Burrillville has been rescheduled. The new date is May 11, 2019. Burrillville was just informed of this change. We apologize for any inconvenience this may have caused. Please direct all concerns regarding this change to RIRRC (Johnston Landfill) at 942-1430 x 241.

Residents who are looking to dispose of any hazardous items during 2018 have the option of taking them to an Eco-Depot at RIRRC at 65 Shun Pike, Johnston, RI between 8:00 a.m. and 12:00 p.m. (weather permitting) on the following dates:

August 11th October 20th December 15th

Recycle Rate Update



Burrillville's current recycle rate is 28%. Residents continue to do a great job, however there are many items still ending up in recycling carts that are not recyclable. Recycling loads that are contaminated or contain prohibited items may be rejected at the MRF. A rejected load costs the Town \$250, and all the contents of that load must be landfilled at \$47/ton. No one wants this to happen! While nobody's perfect and mistakes happen, please do your part to keep the following items (all seen recently in the recycling) **OUT** of your recycling bin:

Food, leaf and yard debris, construction and demolition debris, clothing, textiles, and tarps, plastic bags, recyclables IN plastic bags, diapers, tires, chains, cables, wires, ropes, hoses, household hazardous waste, propane tanks, scrap metal and paint.

Please take the time to review the list of accepted items and contact the Recycling Coordinator with any questions. For any questions on the Do's and Don'ts of recycling in RI, please visit www.rirrc.org or call the Town's Recycling Coordinator at 568-4440 x12 or ahall@burrillville.org.

Thank you for recycling and helping to Keep Burrillville Beautiful!
Field Trips - It's not too late to book a field trip to the landfill to see how

the single stream sorting process separates our Town's recyclables. Field trips are free! If you would like to book a field trip for your school or group please contact Andrea Hall at 568-4440 x12 or ahall@burrillville.org

Upcoming Recycling Events

September 8th, Green Festival: The Green Festival will take place from 10:00 a.m. to 2:00 p.m. on September 8th at the Stillwater Mill Complex. This community event is offered by the Pascoag Utility District and Department of Parks and Recreation. Residents are able to visit with Green Vendors, learn about energy conservation and recycling, and participate in free workshops. There will be Refuse and Recycling displays and information regarding recycling in Town, as well as a free recycled craft. For more information on this year's Green Festival contact Desarae Dolan at the Pascoag Utility District 401-568-6222 x223 or ddolan@pud-ri.org.

Weekly Setout Reminders

- ⇒ Trash and recycling carts are the property of the Town. No markings are permitted on the cart other than in the white address label on the top of the lid.
- ⇒ Place one cart on each side of the driveway **or** place carts 3 ft. apart from one another and from other obstacles.
- ⇒ Place carts no more than 3 ft. away from the curb or road edge.
- ⇒ Arrows on the cart lid must face the street.
- ⇒ **Cart lids must be fully closed with no material sticking out.**
- ⇒ No material may be placed on top of the cart lid.

Why is it important to recycle as much as we can?

Recycling saves the Town money! The more we recycle, the less trash we generate, and the less trash we have to tip at the landfill at a rate of \$47/ton.



The Central Landfill is running out of room. If we don't start taking more recyclables out of the waste stream it is estimated we will only have enough space in the landfill for another 22 years. When the landfill is full, Rhode Island municipalities will have to bring our Solid Waste elsewhere at a rate of approximately \$96 per ton.

Refuse & Recycling Information

Residents can obtain information about delays due to weather events or holidays in one of three ways:

1. Visit the Refuse & Recycling webpage www.burrillville.org/refuse
2. Check the Refuse and Recycling Voicemail Message (568-4440 x12)
3. Sign up to receive Public Notice Emails on the main page of the

Town website www.burrillville.org/subscriber.

As soon as Waste Management notifies the Town of any issues causing a delay or cancellation, that information is made available to residents. Information is updated immediately even when a decision is made after normal working hours, including over the weekend.

Weekly Curbside Pickup

Residents are allowed one BLACK lid Town owned cart for trash, and one YELLOW lid Town owned cart for recycling. Place trash and recyclables curbside no more than 24 hours before and no later than 7:00 a.m. on your scheduled collection day. Excess trash can be placed next to the cart in a Town approved Overflow Bag. Excess recycling can be brought to the Whipple Ave Facility and placed in the Mixed Recycling dumpster.

Bulky Items

Bulky items are collected twice per month for a fee of \$16 per item. A bulky item is an item of solid waste that is not recyclable and is too large to fit inside a bag placed inside the Town provided cart. Examples include couch, chair, desk, rugs, carpets, etc. Call Waste Management to schedule a pickup at 1-800-972-4545. Waste Management will not refund residents for items scheduled for pickup that disappear prior to the collection date. Residents with a large amount of bulky items can utilize the Bagster Program. Contact the Town's Recycling Coordinator for information on Bagster bags - 568-4440 x12 or ahall@burrillville.org. Bulky items left curbside for a period of more than one day are in violation of Section 22-43 of the Solid Waste Ordinance and may be subject to fines and penalties.

Appliances/White Goods

Appliances are collected twice per month for a fee of \$19 per item. Appliances include washers, dryers, stoves, refrigerators, air conditioners etc. Call Waste Management to schedule a pickup at 1-800-972-4545. Waste Management will not refund residents for items scheduled for pickup that disappear prior to the collection date. Non-Freon appliances can be brought to Whipple Ave for no fee. Local metal recyclers advertising in the Bargain Buyer will often pickup Freon appliances at no charge.

Cart Maintenance

Residents are responsible for periodic cleaning/disinfecting carts, properly storing carts when not in use, and cart replacement due to normal wear and tear. Contact the Recycling Coordinator for repairs to cart wheels, axles, lids and hinge pins.

Exchanging Carts

Residents can exchange their 65-gallon Town owned trash cart for a larger 95-gallon cart for a onetime charge of \$50. 65-gallon recycling carts can be exchanged for a larger 95-gallon recycling cart for no fee. Cart(s) to be exchanged must be clean and in good condition. A \$15 administrative charge will be assessed if the Town delivers and exchanges the cart(s). Residents may exchange their 65-gallon carts for smaller 35-gallon carts for no fee. A \$15 administrative charge will be assessed if the Town delivers and exchanges the cart(s). No administrative charge will be assessed if the resident exchanges the cart(s) at the Department of Public Works. Exchanged carts are subject to availability.

Recyclable Items Accepted in the YELLOW lid Recycling Cart

- * Milk & juice cartons
- * Juice boxes (remove straws)
- * Glass containers
- * Plastic containers (up to 5 gallons. Disregard the numbers and triangle)
- * Metal and aluminum cans, metal lids, foil & pie plates
- * Mixed paper, newspapers and inserts
- * Thin cardboard – cereal/pasta boxes, tissue boxes etc. (No refrigerated containers: beer, soda or frozen food boxes)
- * Corrugated cardboard (must be flat, cut into pieces that fit loosely in cart, not larger than 3'x5")
- * Pizza boxes that are not greasy

Empty & rinse all recyclables. Replace plastic caps and trigger sprays. Place recyclables loose in the cart. No plastic bags in your recycle cart.

For an extensive list of recyclable items visit: www.burrillville.org/refuse or call 401-568-4440 x12 with questions.

Overflow Bags

Residents with excess trash can purchase Town Overflow Bags at DPW and IGA. Bags are \$3 each and are sold in sleeves of 5 at IGA. Residents can purchase single bags at DPW.

How Do I Dispose of...?

Books— Books that are in good condition can be placed in the Kidu-
cation bin at DPW.

Compact Florescent Light Bulbs (CFLs) — Bring to Rocky's Ace
Hardware in Greenville, Vose True Value Hardware in Woonsocket, or
an Eco-Depot.

Computer Ink Cartridges – Bring to DPW to be donated to the Burrill-
ville Lions.

Construction/Demolition Debris – Anything that was or could be at-
tached to your home is considered construction debris. Examples in-
clude windows, shower doors, wood, bathtubs, toilets, sheet rock etc.
Bring to RIRRC, hire a private hauler, or use the Bagster program.

Excess Waste due to a Large Cleanout or Renovation—Hire a pri-
vate hauler or use the Bagster Program. Contact the Town's Recycling
Coordinator for information on Bagster bags.

Hazardous Electronic (E-Waste) —TV's, computers, monitors and
laptops. Bring to one of the five state collection locations including
RIRRC. Call for 942-1430 for more information and hours. .

Hazardous Household Waste – Chemicals, fertilizers, propane tanks,
oil based paint, pool chemicals, gasoline, transmission fluid, etc. - Bring
to Eco-Depot. Call Rhode Island Resource Recovery @ 942-1430 ext.
241.

Medical Syringes – Place in hard plastic container (laundry detergent
bottle, bleach bottle etc.) seal cap tightly with duct tape and place con-
tainer in the trash.

Plastic Bags – tie in a knot and drop off at any ReStore bin, including
Brigido's IGA.

Pellet Bags –drop off at any ReStore bin, including Brigido's IGA.

Prescription Drugs – Bring to Burrillville Police Department. Do not
flush down the toilet.

Styrofoam- Bring to RIRRC. Foam must be clean, dry and bagged in
clear or translucent bags. No spongy foam (#1 Fan fingers etc.) and no
packing peanuts. Call Rhode Island Resource Recovery @ 942-1430
for more information.

Used Cooking Oil — bring to RIRRC.

Used Motor Oil, Oil Filters, Car Batteries – Dispose of at DPW during
normal business hours. 5 gallon limit for motor oil.

Whipple Ave. Recycling & Compost Facility Information
350 Whipple Avenue, Oakland
Open every Wednesday & Saturday
from 9:00 A.M. TO 1:00 P.M., weather permitting.
Proof of Residency is required to use the Whipple Ave Facility.



Items ACCEPTED at the Whipple Ave.
Recycling & Compost Facility

Christmas Trees: First two Wednesdays and Saturdays in January from 9:00 A.M. to 1:00 P.M. Trees must be cleaned of all ornaments and tinsel. No plastic bags permitted.

Clothing & Textiles: Includes items suitable for reuse and items to be processed as rags. Place in Clothing & Textile Bin at The Whipple Ave Recycling & Compost Facility.

Cardboard: Cardboard of all sizes including pieces larger than 3'x5' can be placed in the cardboard dumpster.

Mattresses/Box-Springs—No futon mattresses, mattress pads, or top-pers. No severely damaged, wet, twisted, frozen or soiled mattresses.

Metal (scrap) – bicycles, rims, lawnmowers (drain oil/gas), grills (cleaned), exercise equipment, pipes, metal cabinets, and other miscellaneous scrap metals.

Non-Freon Appliances – stoves, washers, dryers, dishwashers

Plastic (Rigid) - Children's toys, hose reels, lawn furniture, etc. Only items **composed entirely of rigid plastic** are recyclable in the Rigid Plastic container at Whipple Ave. No metal, no motors, no batteries

Tires – must be off the rim. Limit of 4. No oversized tires.

Yard Waste – brush must be 4" diameter or less & cut in 5' lengths or less. Place leaves in paper bags only.

Recycling Reminders

- Greasy pizza boxes, paper packaging from frozen/refrigerated foods, beer/soda packaging are NOT recyclable
- Juice pouches (Capri sun etc.) and straws are NOT recyclable
- Styrofoam is NOT accepted in your recycle cart
- Plastic bags are NOT accepted in your recycle cart
- Any plastic container 5 gallons or less IS now recyclable in your yellow lid cart
- Plastic caps and covers can now stay on your plastic containers
- Scrap metal and wire hangers are NOT accepted in your recycle cart. Please bring to the Whipple Ave Recycling and Compost Facility.

If your **trash** or **recycling was not picked up** please call Waste Management at 1-800-972-4545.

If you have **questions** about how to recycle certain items, or **concerns** about your trash or recycling pickup please contact the Recycling Coordinator – Andrea Hall at 568-4440 x 12 or ahall@burrillville.org. Visit our website for detailed information www.burrillville.org/refuse.

Refuse & Recycling Holiday Collection Schedule

When your regular collection day falls on a holiday, **trash and recyclables are delayed by one day for the remainder of the week.** Monday's trash is collected on Tuesday, Tuesday's on Wednesday etc.

2018 Holidays that Delay Trash & Recycling Collection

Labor Day	Monday, September 3 rd
Columbus Day	Monday, October 8 th
Veteran's Day	Sunday, November 11 th observed on Monday, November 12 th
Thanksgiving Day	Thursday, November 22 nd
Christmas Day	Tuesday, December 25 th

2019 Holidays that Delay Trash & Recycling Collection

New Year's Day	Tuesday, January 1 st
Martin Luther King, Jr. Day	Monday, January 21 st
Memorial Day	Monday, May 27 th
Independence Day	Thursday, July 4 th
Victory Day	Monday, August 12 th
Labor Day	Monday, September 2 nd
Columbus Day	Monday, October 14 th
Veteran's Day	Monday, November 11 th
Thanksgiving Day	Thursday, November 28 th
Christmas Day	Wednesday, December 25 th

Excess Recyclables/Single Stream Recyclables: Excess recyclables that would normally go in your yellow topped cart.

Mattresses/Box-Springs: No futon mattresses, mattress pads, or toppers. No severely damaged, wet, twisted, frozen or soiled mattresses.

Metal (scrap) – bicycles, rims, lawnmowers (drain oil/gas), grills (cleaned), exercise equipment, pipes, metal cabinets, and other miscellaneous scrap metals.

Non-Freon Appliances – stoves, washers, dryers, dishwashers

Plastic (Rigid) - Children's toys, hose reels, lawn furniture, etc. Only items **composed entirely of rigid plastic** are recyclable in the Rigid Plastic container at Whipple Ave. No metal, no motors, no batteries.

Tires – must be off the rim. Limit of 4. No oversized tires.

Yard Waste – brush must be 4" diameter or less & cut in 5' lengths or less. Place leaves in paper bags only.

Refuse & Recycling Holiday Collection Schedule

When your regular collection day falls on a holiday, **trash and recyclables are delayed by one day for the remainder of the week.** Monday's trash is collected on Tuesday, Tuesday's on Wednesday etc.

2018 Holidays that delay Trash & Recycling collection

New Year's Day	Monday, January 1 st
Martin Luther King, Jr. Day	Monday, January 15 th
Memorial Day	Monday, May 28 th
Independence Day	Wednesday, July 4 th
Victory Day	Monday, August 13 th
Labor Day	Monday, September 3 rd
Columbus Day	Monday, October 8 th
Veteran's Day	Sunday, November 11th (observed on Monday, November 12th)
Thanksgiving Day	Thursday, November 22 nd
Christmas Day	Tuesday, December 25 th

*If you have **questions** about how to recycle certain items, or **concerns** about your trash or recycling pickup, please contact the Recycling Coordinator – Andrea Hall at 568-4440 x 12 or ahall@burrillville.org.*

Visit our website for detailed information www.strivefor35.org

Department of Public Works

Jeffrey M. McCormick, P.E., Director

65 Union Avenue, Harrisville

Telephone: (401) 568-4440 Fax: (401) 568-9469

Hours: 6:30 a.m. to 3:00 p.m. Monday through Friday

Town Minibus

The Town of Burrillville Department of Public Works offers a minibus transportation service for eligible residents of Burrillville. To be eligible for this service, Burrillville residents must be 62 years old or older or totally disabled. The minibus operates on a regular schedule and will pick up any eligible Burrillville resident upon request. The schedule is as follows:

- Mondays, Tuesdays and Thursdays – bus available for doctors' appointments between 9 a.m. and 2 p.m.
- Wednesdays – bus available for grocery shopping trips to the Village IGA Marketplace in Pascoag
- Fridays – bus is available for scheduled trips for up to 12 people for excursions or shopping trips around the state, one trip per month to Dinos.

This bus service is available on a first come, first served basis, and is free of charge to Burrillville residents.

Please call Allison at 568-4440 ext. 201 with any questions or to schedule the minibus.

The Town of Burrillville Department of Public Works continues to work on regular maintenance projects of street sweeping, brush cutting, catch basin cleaning, sidewalk repairs and roadway repairs. Additionally, the Department works on major roadway and infrastructure projects each construction season. Here is the status of the projects we are working on or planning:

- **Lake Shore, Shady Lane, Highland, Lake View Ave., Maple Terrace and Beach Road** – Paving was completed in June some finish work being completed by November.
- **DPW Facility** – Building Envelope should be complete by November. Phase 3 fit out will begin in December.

- **Wilson Reservoir Spillway** – Construction was completed in March 2018.
- **Sayles Ave.** – Roadway and sidewalks to be reconstructed next spring. Currently completing design
- **South Brook Street** – Drainage piping and catch basins. Fall 2018 construction.
- **Misc. Drainage Improvements** – Multiple catch basins rebuilt.
- **Tree Trimming** – A combination of our continuing brush clearing with the articulating flail machines, tree trimming by DPW forces and the use of outside contractors for large dangerous trees needing bucket trucks or cranes is an ongoing nearly year effort.
- **Road Work Planned** - Pending Town Council approval and budget, the following roads will be included in FY 2019 to be reclaimed and repaved; Buxton St.

Seasonal Help

The summer part-time employees will continue to maintain all of the Town Parks and Recreational facilities April through November. Their work includes grass cutting, weed clearing, trash removal and leaf removal in the fall.

Engineering

DPW Engineering Projects – The Director of Public Works will be working with consultants on numerous future construction projects to prepare plans and obtain the required permits. Among the projects are:

- Sayles Ave Phase II, Reconstruction between the Post Office and Laurel Hill Rd. – finalizing design
- Recreation Center/Lodge Expansion Study – on hold
- East Wallum Lake Rd and Rt 100 intersection – RIDOT has taken on this project
- Pavement Management Update - ongoing
- RIDEM Storm Water Management Plan - ongoing
- Landfill Monitoring- ongoing
- Oakland Bike Path – in permitting stage
- BMS/Branch River Track & Field Upgrade – preliminary design phase
- Bridge and Culvert Railing Analysis - future

- Mapleville Main Street Reconstruction – future
- Park Place – future
- Stillwater Culvert – design complete, construction on hold

State Roads

Rhode Island Department of Transportation Projects – DPW is coordinating with RIDOT regarding the status and potential issues regarding State projects within the Town of Burrillville. These projects include:

- ◇ Shippee Bridge replacement complete
- ◇ 1R Improvements to Union Ave to Pascoag Main Street ongoing
- ◇ Victory Highway (between East Ave and Bridge 105), in design
- ◇ Railroad Ave Bridge, Construction is ongoing.

Winter

The Department of Public Works will be treating roads with salt/sand and plowing as needed with our existing crews complimented by on-call drivers. Please heed all winter parking bans to allow plow trucks to get through tight roadways and pay attention to garbage collection notices. Refer to the Town website to report mailbox damage etc.



Burrillville Historical and Preservation Society

16 Laurel Hill Avenue, Pascoag, RI 02859

Phone: 568-8534 email: bmencucci@verizon.net

Website: www.bhps.org

The Burrillville Historical & Preservation Society's mission is to preserve and protect Burrillville's history. The Society meets on the 4th Tuesday of each month at 7:00 p.m. at its headquarters, the Bridgeton School in Pascoag. This 1897 schoolhouse serves as a repository for a collection of photos, documents, histories, scrapbooks, cemetery information, clothing and artifacts. The schoolhouse is open during monthly meetings, special events and by appointment. If you have old photos you'd like to share, we can scan them and return your originals.

We are always looking for volunteers to help us with cemetery cleanings. The work involves cutting brush, weed-whacking and raking leaves. We especially need volunteers that can weed-whack. Even if you can volunteer one hour of your time in a year, the help would be greatly appreciated. This is a great opportunity for high school students to get their community service hours for graduation. Please contact us if you'd like information on our adopt-a-cemetery program.

Gravestone conservation work has been completed in Cemetery #32 on Douglas Pike and Cemetery #31 on Ironmine Road. Work is progressing in the Sayles-Cook Cemetery in Pascoag. Dead and hazardous trees have been removed that were growing too close to the monuments.

If you own a historic cemetery on your property, you are entitled to receive a \$100 reduction in your property taxes. However, you must maintain the cemetery by raking, mowing and/or keeping the brush out. You also must submit a dated photo.

Contacts for information on other cemeteries in Burrillville

- * Pascoag Cemetery Association
Barbara Schouboe 401-568-3210
- * St. Patrick's in Pascoag 401-568-5600
- * St. Theresa's in Nasonville 401-568-8280

Berard-Desjarlais American Legion Post 88

111 Chapel Street Harrisville, RI 02830
www.legionpost88ri.org



The American Legion was chartered and incorporated by Congress in 1919 as a patriotic veterans organization devoted to mutual helpfulness. It is the nation's largest veteran's service organization, committed to mentoring youth and sponsor-

ship of wholesome programs in our communities, advocating patriotism and honor, promoting strong national security, and continued devotion to our fellow service members and veteran's needs.

The Post supports many community programs and provides a meeting place for Burrillville organizations. Linda Peck, Town and Post Service Officer, is the Veterans Representative. Office hours are held on the third Wednesday of each month at 5:30 p.m. at Post 88. For any emergencies, please contact Linda Peck at 401-568-8491 or by email: ldp24@cox.net.



Ray Trinke has taken over the duties of Building Coordinator. He will maintain the schedule at the Binns Building and can be reached at 401-568-0858 or by e-mail at raytrank101@cox.net. Please contact Ray also for any town organizations or party rental or if you would like to become a member of the post.

Support the Post 88 Flag Sale at www.legionpost88.com/post88.html

or buy from Lawrence Brothers Hardware across from Post 88 in Harrisville.

We collect used clothing for the needy in the donation shed located outside our post home.





Adopt-A-Spot
568-4300 x145
glabossiere@burrillville.org

Burrillville is a beautiful place to call home!

The Adopt-A-Spot program draws on the generosity of others to help beautify our town. Each space is uniquely designed and kept up by sponsors. There are locations available that need the love and care of volunteers. Please consider adopting a spot of your own.

You may choose from one of the sites below, or submit a request for YOUR unique favorite spot.



Summer & Shea Lane



Spring Lake Beach Sign



Clocktower Circle



Skate Park



Freedom Park 3



*We would like to thank all current sponsors
for their generous gift of time and money*

Pathfinders 4-H Club The Spink Family

Burrillville Conservation Commission

Burrillville Democratic Committee

Burrillville Industrial Foundation

Burrillville Garden Club

American Legion Hall

Bella Restaurant

Craig Cayer

Lion's Club

Glennis Estabrook

Tobin Style Bootcamp

Harrisville Fire Department

**Pascoag Pack 1 Cub Scouts
& Pascoag Troop 1 Boy Scouts**

Natural Resources Services, Inc.

Harrisville Fire Department, Hose Co.

Lawn & Garden Services, Chris Thompson

New 2018 Adopt-a-Spot



Tobin Style BootCamp



Burrillville Garden Club

Glennis Estabrook



Craig Cayer: Spring Lake Beach Island at Entrance

Burrillville Sewer Commission Burrillville Wastewater Treatment Facility

William Andrews, Chairman
141 Clear River Drive, Oakland 02858
(401) 568-6296

The Board of Sewer Commission is comprised of five (5) members. The members are currently William Andrews, Chairman, Richard Nolan, Vice Chairman, Russell Fontaine, Secretary, and Gary Rouleau. The Commission holds meetings on the second Tuesday of each month at 6:30 p.m. in the Board Room of the Wastewater Treatment Facility. If you would like an item placed on the agenda, it must be received at this office by the first Tuesday of the month no later than 2:00 p.m.

Sewer Use Charges

The sewer use rate for FY19 is \$504.00 a year for a single family dwelling. At the present time, residential sewer use charges are mailed once a year in October and can be made in quarterly payments of \$126 per unit. Please note that failure to receive a bill does not negate the requirement to pay the bills when they are due.

Sewer Assessment Charges

Sewer assessment bills are mailed out once a year in the month of July. Homeowners can choose to pay the sewer assessment in a lump sum or over a 20 year period. If you choose the 20 year payment plan, you can at any time make additional payments to the assessment or pay in full.

Please note:

- **Should you sell or transfer your property, the sewer assessment is not transferrable to the new owner.**
- **Any assessment balance must be paid in full at time of sale.**
- **If you are having financial difficulties, please contact this office as soon as possible so that we can set up.**

Payment

Bills can be paid in person at the Wastewater Treatment Facility or by mailing to: P.O. Box 71, Harrisville, RI 02830. Please note that there is a drop box located to the left of the rear entrance to the Town Hall from the parking lot for your convenience during non-working hours. **Please note on the front of the envelope that it is a sewer payment and checks only - No Cash.**

This office does accept postmarks for payments. However, payments with NO postmark (such as payments left in the drop box at Town Hall, will be processed on the actual day they are received by this office.

Please note that we now have in service the credit card option to pay your bills. Customers may now view and pay their balances online or at the office using their MasterCard or Visa Cards. Please check the bottom of your bill for the site and your Pin # to access your account. The credit card company does charge a 3% fee for this service.



The Burrillville Lions Club

P.O. Box 414

Harrisville, RI 02830

"Where there's a need, there's a Lion"

The Burrillville Lions Club is a volunteer non-profit organization serving the residents of Burrillville and North Smithfield. The Club was chartered by Lions Clubs International in Burrillville in 1947 and has, on average, 35 to 40 members on the roster. The Club meets the first and third Wednesday of each month, except July and August, at Uncle Ronnie's Red Tavern in Nasonville. Fund raisers are held to provide for charitable and community betterment activities. These include a since founded, 70 year tradition of conducting a learn-to-swim program at the Town Beach, providing scholarships for Burrillville resident high school seniors; supporting the town's food banks; providing dictionaries to all third grade students in Burrillville and North Smithfield public schools; hosting camps for blind and handicapped children at the Town Beach; supporting the RI Sign Foundation and Children with Cancer Fund; and assisting families at the state's Ronald MacDonald House.

Services provided include: conducting eye screening for elementary school children; providing food and support for the Backpack Program; conducting Earth Day Cleanups; assisting residents with eye examinations and glasses; and conducting diabetes awareness programs.

The Burrillville Lions Club is a part of the Lions Clubs International, the largest service organization in the world. Membership is by invitation and must be sponsored by a member of the Club.

Volunteers are always needed and welcomed. If interested, please contact any officer or member, or write to us at The Burrillville Lions Club, P.O. Box 414, Harrisville, RI 02830.



Jesse M. Smith Memorial Library

Beth Ullucci, Director

100 Tinkham Lane, Harrisville, RI 02830

(401) 710-7800 Fax: (401) 710-7772

www.jmslibrary.org or visit us on Facebook

Hours: Monday-Thursday 10:00 a.m.- 8:00 p.m.

Friday & Saturday 10:00 a.m.- 5:00 p.m.

Summer Saturdays 10:00 a.m.-2:00 p.m.



You can always find something new to do at our library. We offer a wide array of programming and materials to lend for patrons of all ages. You can

find story times, adult crafts, books, DVDs, computers, wireless printing, E-Books, and a whole lot more every time you visit. Come check out all we have to offer at our beautiful building by the river.

Summer Wrap-Up



We enjoyed the bustle of summer, but as always, it went by too fast. The Children's staff kicked off summer with Ice Pops and Alpacas on our Riverwalk. Many Feet Farm generously provided the alpacas. Music and rock themed activities were enjoyed by children throughout the summer as part of the 2018 theme, Libraries Rock! They made and played their own instruments, created pet rocks, played musical games, participated in a magic show and more! Teens had their own summer reading program which provided rewards for reading and exciting programs including a paint party, cupcake decorating contests, an outdoor water sponge-bomb fight and more! Teens also participated in a community service project by creating cards for hospitalized children. In addition to the hundreds of books read, adults participated in a variety of programs including a henna party, rock painting, DIY terrarium crafts, a rock-hounding program, a visit from Andrea Perron and more. The summer concluded with an all-ages Star Gazing Party on the Riverwalk with Skyscrapers, Inc. from the RI Astronomical Society. High powered telescopes allowed visitors to view Saturn and its rings, Jupiter, Mars and the moon.

Thousands attended our Friends of the Library **Riverwalk Times Concert Series**. Shows went on every Saturday night for 9 weeks. This year's lineup included the Duke Robillard Band, Branded, the Jesse Liam Band, the Aviators, Brass Attack, Live Music Band, Whiskey Rhode and the DeLoreans and Lizzie James and the Greystone Rail. The 2018 sponsors were the Friends of the Jesse Smith Library, The



June Rockwell Levy Foundation, Pascoag Utility District, Joseph and Sheila Burgess, The Taco Shop, Inc., Natural Resource Services, Inc., HCA LLC (Heitke Cook Antoch), DeBlois Financial Associates, LLC, Partridge Snow & Hahn

LLP, Cale Keable Esq, Bayberry Commons Nursing and Rehabilitation, Crystal Lake Golf Course and Crystal Lake Tavern, Inc., Burrillville Chiropractic Center, Printer Pro Solutions, Inc, Dance Inspirations, Hopkins Bros. Auto Repair, Li'l General, Harrisville, The Cash Family, Overlook Nursing & Rehabilitation Center, Dunkin' Donuts Pascoag & North Smithfield, Dino's Park N' Shop, Navigant Credit Union and Steere's Burner Service. Plans are already underway for the 2019 series. If you have a suggestion for a band you would like to see in our line-up, contact Beth at the library.

Legislative Grant

The library received a \$1000 Legislative grant sponsored by Representative Cale Keable. The funds were used to purchase an additional laptop and games to attract more teens to our daily Teen Hangout.

Champlin Foundation Grant

The library also received a generous grant from the Champlin Foundation which was used to create a business center in the library and add an additional handicapped accessible computer workstation. Be sure to visit the Champlin Room for public computers, a worktable, printing station and a copier/scanner configured to scan documents to email.

Friends of the Library

It is thanks to the Friends of the Jesse Smith Library that we are able to hold all of our amazing programs including summer reading programs, Halloween events, Riverwalk Times Concert Series and other special events. The Friends raise money through book sales, vendor fairs, silent auction and donations. They are always looking for new members.

Look for more information about joining on our website. The Friends meet in the library on the first Wednesday of each month at 6:30 pm. Upcoming Friends events:

- **Fall Craft and Vendor Fair:** Saturday, November 3, 2018 from 10:00 am to 2:00 pm
- **Silent Auction:** November 5-17, 2018

Library Card Sign-Up Month

September is library card sign-up month, but the benefits of having a library card last all year long! In addition to borrowing books, magazines, DVDs and CDs from public libraries across the state, there are so many more things you can do with a library card. The library has several **museum passes** available which offer reduced or free admission to local museums and attractions, including the Providence Children's Museum, Roger Williams Park Zoo, Mystic Seaport, Mystic Village and more. Do you enjoy reading eBooks and listening to audiobooks? Visit the Ocean State Library **eZone** to access thousands of digital titles (streaming movies too) that can be downloaded directly to your device for free, without worrying about overdue or late fees. All Rhode Islanders can access a variety of databases at no cost (most even without a library card) by visiting AskRI.org.

Resources are available which provide auto repair specifications, quality health information, a business and telephone directory, learn a new language, read full text magazine and journal articles, homework help, career/job resources, practice tests for many standardized tests and much more!

The Children's Department is offering programs every day from Monday to Saturday through the fall and winter months. We welcome a new Children's Librarian Ms. Jenn, our former Teen Librarian, who is planning some innovative story times and programs for fall and winter. Be on the lookout for STEM programs linking science, technology, engineering and math, special story times, gaming activities and programs designed for "tweens."

Teens have been flocking to the library in search of fun and a place to hang out. We welcome Ms. Leslie as our new Teen Librarian, who is excited to serve Burrillville's youth ages 11-17. Our **Teen Hangout** in our community room provides teens with food, games, crafts and a place to relax.

Our Teen Hangout Schedule:

Monday-Thursday: 2:00 to 6:00 pm

Friday: 2:00 to 4:30 pm

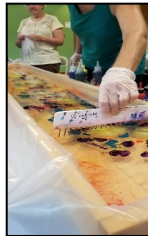
In addition to the Teen Hangout, Ms. Leslie is developing a variety of ongoing and special programs. Be on the lookout for announcements in the fall! Teens will not want to miss the second annual Haunted House in October. Keep up to date with teen happenings by following us on Instagram @jessesmithteens or stop by the Hangout!

Adults have many reasons to visit the library. We continue to offer one-on-one computer help to anyone who asks. If it is a simple question, we can help you right away. If it is more involved, we ask if we can set up a time so we can sit down with you and your laptop for more in-depth assistance. The library continues to offer **wireless printing** to our computer services. Stop by to print from your phone, computer or tablet. Visit <http://tinyurl.com/jmsprint> to upload a document to release on our public printers. You can even upload files from home to pick up later. The public photocopier is also equipped to scan documents which can be saved, emailed, etc. Looking to relax? Sit and color at our coloring table or work on a jigsaw puzzle.

If you enjoy researching your family tree, come in and use the **Ancestry** database for free at one of our computers or even on your own laptop! This online database is an amazing genealogy tool. If you would like some assistance getting started doing genealogy research, please contact the Reference Department to schedule an appointment for some one-on-one instruction.

This year, we added a subscription to the Newsbank's **Providence Journal** online database. Locate full text articles and obituaries from the Providence Journal dating back to 1981. The database can be accessed directly in the library or from home (log in with your Jesse Smith library card).

Each month, we hold a new and unique **craft program** for adults. From mason jar lanterns to paper flowers, you are sure to love our craft activities and the creations we make together. Contact the reference department for more information about our craft for the current month, and to register. Learn something new in a relaxed setting and perhaps meet some new friends.



Ongoing library programs for adults include:

The **Adult Writing Group** is held every other Wednesday from 6:30-8:00 pm. This group provides a supportive atmosphere where writers can share ideas and experience with other writers.

The **Thursday Knitting** is open to knitters ages 10 to 100. Held each Thursday from 6:00 to 7:45 pm, the knitters have extra yarn and needles ready for newcomers. Bring your projects to knit, chat and meet new friends. Our **Book Discussion Group** continues meeting monthly here at the library. A different book is chosen with input from the group and the library leader. Keep an eye on the library's webpage, newsletter and Facebook page for these updates.

In addition to ongoing programs, the library has many special events. This fall, we will be playing Book BINGO! Drop in to have fun and win prizes. As Halloween approaches, visit the library in October for a scare – the library will be transformed into a walk-through haunted house. You've never seen the library like this, so be prepared to be terrified! Follow library events in our newsletter and on the library's website calendar and Facebook page.

Statistical Information

Visits: in FY 2018, we had 5596 registered patrons and 77,528 **visits to the library**.

Programming: in FY 2018, we had a total of 916 **programs** with an attendance of 22,365!



School Committee Contact Information

Mark Brizard Chairperson 571 Victory Highway Mapleville, RI 02839 (401) 567-9275	John M. Karmozyn Vice-Chairperson PO Box 19 Glendale, RI 02826 (401) 568-3745	Silvia St. Pierre Clerk 130 Maple Drive Harrisville, RI 02830 (401) 568-8885
Dorothy Cardon PO Box 638 Glendale, RI 02826 (401) 568-4913	Alexandra LeClair P.O. Box 24 Glendale, RI 02826 401-636-7600	Donison Allen 451 Lapham Farm Rd. Pascoag, RI 02859 401-568-6832
Joshua Tessier 245 Jackson Schoolhouse Road Pascoag, RI 02859 401-371-2888		

School Department Contact Information

Superintendent of Schools Dr. Michael Sollitto (401) 568-1301 sollittom@bsd-ri.net	Director of Pupil Personnel Services Candace Andrade (401) 568-1301 andradec@bsd-ri.net	Supervisor of Business Affairs Robin Kimatian (401) 568-1301 kimatianr@bsd-ri.net
Director of Technology Justin Allen (401) 568-1301 allenj@bsd-ri.net	Director of Facilities Bill Robinson (401) 568-1301 robinsonb@bsd-ri.net	Food Services Manager Jen Palmer (401) 568-1360 palmerj@bsd-ri.net
Director of Curriculum Instruction & Assessment Julie Mayhew (401) 568-1301 mayhewj@bsd-ri.net		

For the latest information about our schools, please visit the Burrillville School Department website at www.bsd-ri.net. Below are just a few of the items you will find:

- ◇ School Calendars, including dates for report cards & progress reports
- ◇ School Closing Information ◇ District Curriculum
- ◇ Monthly District Updates and info about Special Events
- ◇ School Committee Policy ◇ Lunch Menus

From our Home Page
you can also connect to individual school websites.

Remarkable Burrillville Graduates

Our Burrillville School Department faculty, staff, administration, and school committee members are so proud of the accomplishments of our graduates, and we want to shine a light on those who make us particularly proud of the great work that we do every day!

This fall, we are pleased to recognize **Mr. Raymond Menard**, a well-known architect and philanthropist, who graduated from Burrillville High School in 1947. Born and raised in Harrisville, Mr. Menard joined the Marine Corps after graduating from BHS and served overseas during the Korean War. Upon his return, he studied architecture at Roger Williams University, and he eventually went on to found the architectural firm that became the Providence Partnership. Mr. Menard was responsible for developing plans for many of our town buildings, including additions to the Levy Rink. He was honored in 2016 for this work when the newly-constructed *Raymond Menard Off-Ice Training Room* at the Levy Rink was named after him. A dedicated supporter of many northern RI charities and trustee of the Levy Foundation for over 30 years, Mr. Menard has certainly made his mark on our town and our state, and we are proud to call him one of our own.

We look forward to recognizing many more Burrillville graduates who have made their mark on our community. If you know of a Remarkable Burrillville Graduate, please contact Mrs. Julie Mayhew, Director of Curriculum, Instruction, and Assessment, at 568-1301 or mayhewj@bsd-ri.net.

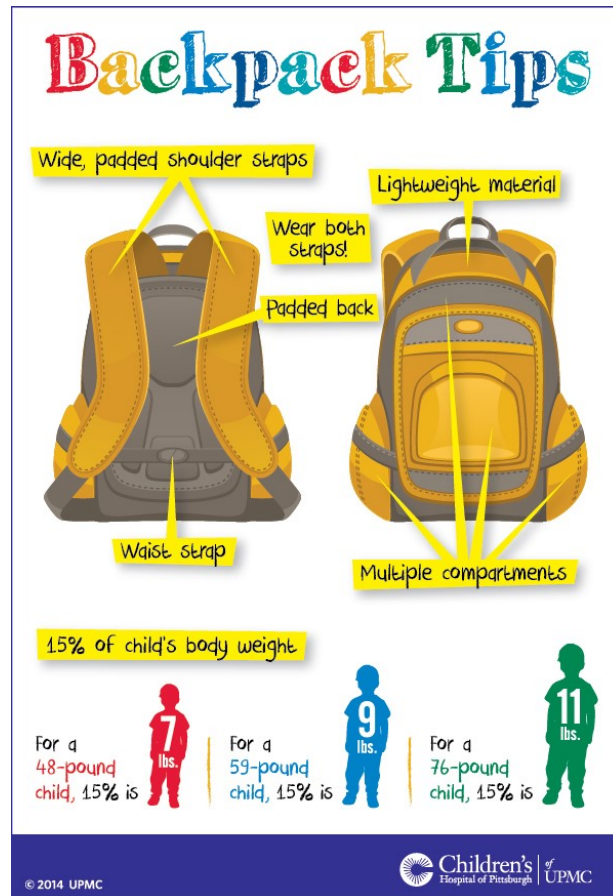
Career and Technical Education Pathways at BHS

There is a lot of conversation about Career and Tech Pathways in our secondary schools recently! A **CTE pathway** is a sequence of two or more CTE courses within a student's area of career interest. Pathways are designed to connect high school classes to college, industry certifications, and/or a career. The Burrillville Schools recognize that there are many different ways for students to achieve an education that prepares them for life beyond high school, and we are striving to provide a learning environment that allows all of our students to reach their individual goals.

Burrillville High School proudly offers ten different career and technical pathways to our students: Automotive Technology, Biomedical Science, Biotechnology, Business and Finance, Child Care, Construction,

Criminal Justice, Engineering, Environmental Science, and Graphics Communications. Several of our teachers have engaged in extensive training to provide hands-on, project-based instruction involving real-life problems for students to solve. This year, we have expanded our course offerings in technology at the middle school to ensure that our incoming freshmen are well-prepared for the demands of the pathway courses they may choose at the high school.

For more information about our CTE Pathways, please contact Principal Michael Whaley at 568-1310 or whaleym@bsd-ri.net. The full list of course offerings is also available on the Burrillville High School website—just click on the *Academics* tab and look under *BHS Handbooks*.



Pascoag Public Library

57 Church Street
Pascoag, RI 02859

Tel: 401-568-6226 Fax: 401-567-9372

Web: <http://pascoaglibrary.org>

<http://facebook.com/PascoagLibrary>

Pascoag Public Library aims to provide the same services as larger libraries while retaining its small-town ambience. We have 16,500 volumes for all ages including everything from classics to the latest best-sellers in both fiction and non-fiction. Patrons can also borrow materials from all the public libraries in the state through the Ocean State Libraries (OSL) network.

NEW YEAR-ROUND HOURS

Monday: 1:00 p.m. to 8:00 p.m.	Friday 10:00 a.m. to 3:00 p.m.
Tuesday: Closed	Saturday 9:00 a.m. to 1:00 p.m.
Wednesday: Closed	Sunday Closed
Thursday: 10:00 a.m. to 8:00 p.m.	

LIBRARY NEWS

In May/June we welcomed a new director, Gretchen H. Hanley, and a new Children's Librarian, Patrick Tierney. They will continue to modernize the library, while ensuring that it does not lose sight of its historical roots. Both librarians share a strong focus on the community's needs, programming for all ages, and ensuring that the library is a welcoming place to spend time.

PROGRAMS AND EVENTS

The Library offers regular programs for families, children, teens, and adults. In the fall, after the Summer Reading Program is over, we're hoping to offer monthly programs for adults & teens, especially. Patrick is already planning his fall story times for children. We will continue with our Thursday "Crafternoons." We may schedule a monthly or bimonthly Genealogy program run by Trustee Kathan Lambert. The possibility of a book discussion is on the agenda as well.

We are always taking suggestions for new programs! If there is something that you would like to learn or something you want to teach, please contact us. paslib.director@gmail.com or call 401-568-6226.

SERVICES

Six desktop computers are available for public use with b/w & color laser printing capability.

Black and white printing/copying: 10¢ per page

Color printing/copying: 50¢ per page

Faxing: \$1.00 local, \$2.00 long distance



A wireless printer with scanner and photo printing and color copying capability is available.

Color printing is 50¢ per copy

A fax and copy machine is also available for use by the public.

The charge for a fax is \$1.00 for local numbers and \$2.00 for long distance numbers.



HISTORY

The Pascoag Public Library is an integral part of the history of the Town of Burrillville. It was the first library in the town, founded in 1871 by a women's group called the Pascoag Union Sewing Society. In 1873, they renamed themselves the Ladies Pascoag Library Association, appointed a librarian, and purchased 163 books, which were housed in the librarian's local store. The Library moved four times between 1883 and 1899 when Samuel Mellor offered the use of a room rent free over his mill office on Sayles Avenue where it remained until 1913 when it moved to the Steere Building on Main Street. At this time, charges associated with the loan of books were discontinued and the library became known as the Pascoag Free Public Library.

A bequest of \$500 from Miss Rosamond A. Steere stipulated that the money be used for a free public library building within ten years. This started the building fund, which grew through numerous fundraisers and donations. The library's current home at 57 Church Street was erected in 1924. By 2010, it was clear that the library needed room to grow. With grants from the Champlin Foundation and the Levy Foundation,



the library added a 36x22 foot addition, nearly doubling its size. Construction was completed in June 2011, at the 140th anniversary of the library's founding.

The Library is privately owned by the Ladies Pascoag Library Association and governed by the Board of Trustees, which is still composed of all women.

The Burrillville Conservation Commission

The Burrillville Conservation Commission's mission is to protect and preserve the natural tranquility of the local natural reserves, features and attributes that defines the Town of Burrillville's natural characteristics which draws people to this community to enjoy the rural atmosphere, scenic vistas, recreational opportunities and many qualities of life. The Conservation Commission is responsible for the establishment of a seven-member party that serves as an appointed board reporting directly to the Town Council, Planning Board, Zoning Board and the many municipal employees that constitute the Town's government.

Some of the wonderful areas the Conservation Commission manages are as follows:

1. Joseph O. Brock Blanchard – Nipmuc Trail, located off of Round Top Road, ¼ mile north of Smith Road. Trail is for public walking, hiking & fishing on 200+ acres of land along the Nipmuc River.
2. Wallum Lake Canoe Launch, located off South Shore Road on scenic Wallum Lake. Site is strictly for canoeing, kayaking and fishing. Swimming is prohibited.
3. Clear River Canoe Launch, located off Clear River Drive just behind the Burrillville Animal Control Facility. Access allows scenic exploration of the Clear River from the site to points south along Clear River towards Mill Pond in Oakland.

The Conservation Commission also provides natural resources to our residents on Earth Day, at the Annual Family Fair and other Town sponsored programs throughout the year. View the local listings for upcoming events.



BOY SCOUTS OF AMERICA "Be Prepared"

As of June 2018, the BSA Cub Scouting program is now open to both boys and girls. They are now focusing on providing all of their values unto families.

Cub Scouts is a program for kindergarteners through fifth graders that teaches while having fun, focusing on character development, teaching practical skills and enhancing their community spirit. Cub Scouts are made up of Den's (groups of boys or girls) for each grade. They meet once a week during the school year and then get together for a Pack meeting once a month to show what they've learned and receive their awards. There are two Cub Scout packs in Town.

Cub Scouts are run by trained volunteers and is a wholesome, worthwhile program for any youth. For more information about Pack 1 Pascoag, please contact Florence Stevens at 401-568-0395, or by email at newtfla@cox.net. For more information about Pack 102 Mapleville, please contact Chris Samek at 401-568-2220 or by email at cfsamek@cox.net.

Boy Scouts begin in fifth grade and can stay in until they're 18 years old. Every day they are encouraged to live by the 13 points of the Scout Law. A Scout is trustworthy, loyal, helpful, friendly, courteous, kind, obedient, cheerful, thrifty, brave, clean, and reverent. They are taught skills of the world around them by earning merit badges.

Boy Scouts are grouped by rank, not by grade. All boys start off as a Scout, then advance to Tenderfoot, Second Class, First Class, Star, Life and Eagle Scout. The Troops are separated into groups of similar ranks and skills, called Patrols. All the boys meet once a week and have a "Court of Honor" three times a year where they are recognized and are presented their awards.

There are three Troops in town. For more information about Troop 1 Pascoag, please call Newton Stevens at 401-568-0395 or her email at newtfla@cox.net. For more information about Troop 100 Pascoag, please contact Scott Terranova at his email scottterranova@yahoo.com or phone 860-336-1815. For more information about Pack 102 Mapleville, please contact Tom Sylvester at his email catdonto@cox.net.

The Burrillville Farmers Market

Deb Yablonski, Market Manager

75 Tinkham Lane
Harrisville, RI 02830
401-568-3191

burrillvillefma@gmail.com



We begin our market season in June and continue through September, on Saturdays, 9:30 a.m. to 12:30 p.m., at our Farmer's Market Pavilion, in The Stillwater Mill Commons, 75 Tinkham Lane, Harrisville. We've also added a weekday market on Thursdays, beginning from 3:30 p.m. to 6:00 pm. The Thursday market is held at our original location, The Burrillville Town Common, Main Street, Harrisville, in front of the gazebo. Join us at either or both markets in the spring!

The Burrillville Farmers Market is a nonprofit organization, whose mission is to improve the promotion and marketing of agricultural products in the town of Burrillville and our surrounding communities. The market's goal is to nurture community appreciation of the consumption of wholesome, local foods, natural products and art in a lively neighborhood setting. By supporting local farmers and artisans, we hope to preserve farmland and the quality of rural life in our beautiful Burrillville community.

The Burrillville Farmers Market Association encourages a greater sense of community through fostering local business development, as well as providing educational opportunities for the entire family. We are striving to bring a diverse shopping experience, and to create a community gathering place filled with energy. We hope you'll join us to reduce our carbon footprint and encourage a sustainable food system and lifestyle right here in Burrillville!

With several of our original farms still participating & many new farms & artisans who have joined us, we are mindful that we couldn't do this without the continued support of our Burrillville community. We have looked forward to sharing a season long celebration of all things good & plentiful.

URI Master Gardeners will once again be providing us with free seeds

to distribute, with an emphasis on Heirloom seeds, which are so important. We will have a wide assortment of fruits, vegetables, herbs, eggs, honey, jams, soaps, rubs, plants, baked goods, and art. We hope to have local musicians who share their talents every week! We are pleased to welcome back our president, Al Bettencourt, as a vendor after taking last year off to recuperate from a serious car accident that affected his knee. We welcome many community groups and organizations to the market, to raise awareness of their missions.

Everyone is encouraged to enjoy our gardens alongside the pavilion. These gardens were created through the efforts and donations of our vendors, friends, Burrillville DPW, Seven Hills Rhode Island and Roots and Shoots Nursery. We are thrilled to see how these gardens have evolved through the combined efforts of so many hands, especially Gail and Al Bettencourt, who both work tirelessly to keep them in top shape! Please take some time to enjoy them!

We once again joined the Town of Burrillville, Parks and Recreation Department, Pascoag Utilities, and the Jesse M. Smith Library on several occasions to bring you some special events, such as the Family Fair in June and The Green Fest in September. To stay informed of all our upcoming events, check out our website, look for our Bargain Buyer ads!

We hope you'll come to our market and bring your family, meet up with friends and reconnect with the cycles of nature. We invite you to meet the farmer who so lovingly grows your food or bakes the bread, using ingredients they've grown! Listen to some fine music, purchase that unique gift from the artist who created it and most importantly be a part of our wonderful rural community!

We accept Credit/Debit, EBT (Bonus Bucks!), WIC, Senior Farmers Market Nutrition Coupons , available at the market, and Cash!

Visit our website: www.burrillvillefarmersmarket.org

Email us at: burrillvillefma@gmail.com

Or call: Deb Yablonski, Market Manager 401-568-3191 or Al Bettencourt, President, 401-556-7605

Like us on Facebook.



Information & Services for Seniors

Lisa Jessop, CIS

84 Social Street, Woonsocket, RI 02895

Phone: 766-3734 Fax: 766-5578

The Community Information Specialist at Senior Services, Inc. in Woonsocket, RI, is available to assist and advise senior residents of Burrillville. Please call Senior Services, Inc. at 401-766-3734 to make an appointment. The Specialist can provide information and assistance with applying for programs you may be eligible for.



The Specialist is also trained as a Senior Health Insurance Program (SHIP) Counselor and can explain health insurance options available to Rhode Island seniors so that they may make informed choices concerning their health care.

Understanding Medicare enrollment periods can help you prevent gaps in coverage and avoid financial penalties.

- **Know when to sign up for Medicare Part A and Part B.**
- **Know when you can routinely make changes to your Medicare coverage.**
- **Know whether you are eligible for a Special Enrollment or Special Election Period.**

Take Action:

- 1) Familiarize yourself with each Medicare enrollment period to avoid gaps in coverage and financial penalties.
- 2) If you need help making coverage changes or understanding your options, contact your SHIP.
- 3) If you receive suspicious offers or charges, contact your Senior Medicare Patrol (SMP) to discuss potential abuse or fraud.

Services Available If Eligible

Assisted Living Facilities, Caregiver Abuse, Financial Assistance, Fraud/Waste and Abuse, Health Insurance, Heating Assistance, Home and Community Care Co-Pay, Identification (DEA/RIPTA), In Home Services, SNAP (Food Stamps), Legal Assistance (Living Wills, Health Care Power of Attorney, Medicare, Medical Assistance (Medicaid) Long-term Care, Respite Care, RI Pharmaceutical Assistance, Transportation.

Referrals to other agencies

To reach the Town's webpage devoted to news and information for seniors, go to the Town website (www.burrillville.org) and click on the "Senior Services" button on the left. In addition to *Senior News*, the page contains useful links and information on services and programs available to residents. The site covers topics such as Social Security, RIPAE, State identification cards, RIPTA, senior dining – and more!

HUD Subsidized Senior Housing Assistance

Ashton Court

Burrillville Housing Authority
William Valentine, Executive Director
77 Ashton Court, Harrisville, RI 02830
Tel: 568-6200 Fax: 568-4735

Our mission is to provide decent, safe and sanitary housing for elderly/handicapped-disabled: Public Housing and Section 8 existing housing program.

Bradford Court

Ken DeCaporale, Property Manager
45 North Main Street, Pascoag, RI 02859
Tel: 568-5403 Fax: 568-1717

We accommodate residents 62 and older, as well as handicapped and disabled with a preference to the elderly.

Stillwater Heights Housing

Theresa Stelmach, Property Manager
30 Central Street, Harrisville, RI 02830
Tel: 710-7344 Fax: 710-7346

We provide independent living accommodations for residents 62 and older who meet HUD income guidelines.





Your Local Fire Departments

Harrisville Fire Department

Michael Gingell, Chief

201 Callahan School Street, Harrisville, RI 02830

Business Telephone: 568-5110

Nasonville Fire Department

Joseph Bourquin, Chief

2577 Victory Highway, Nasonville, RI 02830

Business Telephone: 568-5020

Oakland-Mapleville Fire Department

Joseph E. Bertholic, Chief

46 Oakland School Street, Oakland, RI 02858

Business Telephone: 568-5720

Pascoag Fire Department

Harold (Butch) Carter, Chief

Hose #1 105 Pascoag Main Street, Pascoag, RI 02859

Business Telephone 568-4470

Hose #2 141 Howard Avenue, Pascoag, RI 02859

Business Telephone 568-4920

Wallum Lake Fire Department

Robert Bishop, Chief

P.O. Box 354, Pascoag, RI 02859

Business Telephone: 568-9019

Note: Business telephones are not manned at all times. Dispatch at the police department can be used for emergencies 568-6255

For emergencies dial 911



Give Back to Your Community

with a sense of pride!

Inquire about volunteering!*

Town of Burrillville Post Offices

Harrisville Post Office

131 Harrisville Main Street, Harrisville, RI 02830

Wendy Demarais, Postmaster

Mon. - Fri. Retail Hours: 8:30 a.m.- 1:30 p.m. & 2:30 - 4:45 p.m.

Lobby Open: 7:00 a.m. - 5:30 p.m.

Sat. Retail 9:00a.m. - 12:00 p.m., Lobby Open 7:00 a.m. to 12:00 p.m.

568-9075

Glendale Post Office

1916 Victory Highway, Glendale, RI 02826

Wendy Demarais, Postmaster

Marlene Dupre, Clerk

Mon. - Fri. Retail Hours: 10:00 a.m. - 1:00 p.m. & 2:00 p.m. - 4:45 p.m.

Lobby Open 6:00 a.m. - 6:00 p.m.

Sat. Retail: 8:30 - 11:30 a.m., Lobby Open 6:00 a.m. to 3:00 p.m.

568-8782

Pascoag Post Office

35 Bridgeway, Pascoag, RI 02859

Christopher Jackson, Postmaster

Mon.- Fri. Retail Hours, 8:15 -12:30 p.m. & 1:30 -4:45 p.m.

Lobby Hours: 7:00 a.m. - 5:00 p.m.

Sat. Retail 8:30 a.m. -11:30 a.m., Lobby Open 7:00 a.m. to 12:00 p.m.

568-8790

Mapleville Post Office

963 Victory Highway, Mapleville, RI 02839

Wendy Demarais, Postmaster

Mon.-Fri. Retail Hours: 8:30 - 12:30 p.m.

Lobby Open 7:00 a.m. to 5:00 p.m.

Sat. Retail 9:00 to 11:30 a.m., Lobby Open 8:30 a. m. - 12:00 p.m.

568-7312



TOWN OF BURRILLVILLE 2016 MUNICIPAL DIRECTORY

(M-W 8:30-4:30, Th 8:30-7:00, Fri 8:30-12:30)

Town Hall

105 Harrisville Main St., Harrisville
Main Number: 401-568-4300

www.burrillville.org
FAX: 401-568-0490

Town Manager, Michael C. Wood: X145
Finance Director, Michael P. Larocque: X147
Town Clerk, Louise Phaneuf: X124
Board of Canvassers: X132
Tax Assessor, Jennifer Mooney: X125

E-mail: manager@burrillville.org
E-mail: finance@burrillville.org
E-mail: townclerk@burrillville.org
E-mail: townclerk@burrillville.org
E-mail: assessor@burrillville.org

Town Hall Annex (M-W 8:30-4:30, Th 8:30-7:00, Fri 8:30-12:30)

144 Harrisville Main Street, Harrisville
Main Number: 401-568-4300

FAX: 401-710-9307

Building Official, Joseph Raymond: X127
Town Planner, Raymond Goff: X130

E-mail: building@burrillville.org
E-mail: bplanning@burrillville.org

Police Department

Chief: Colonel Stephen J. Lynch

1477 Victory Highway, (Mailing address, PO Box 231 Harrisville, RI 02830)

Dispatch: 568-6255

Detectives: 568-9459

EMA Director: 641-0898

E-mail: bpd@burrillville.org

FAX: 568-9499 TDD: 568-5006
Emergencies: 911

Public Works Department (M-F, 6:30-3:00) E-mail: dpw@burrillville.org

Director/Town Engineer, Jeffrey M. McCormick, PE

65 Union Avenue, Harrisville

Office: 568-4440

FAX: 568-9469

Parks And Recreation (M-F, 8:30-4:30)

Andrea Hall, Director

92 North Main Street, Pascoag

Office: 568-9470

FAX: 568-9457

Community Recreation Center, 300 Church St., Pascoag

Spring Lake Beach Manager, Judy Lopez (Memorial Day – Labor Day) 568-9474

Extended Day Care Program 915 Steere Farm Rd. Harrisville: 568-1356

Waste Water Treatment Facility

(M-Th, 8:30-4:00, Fri 7:30-3:00)

141 Clear River Drive, Oakland

Superintendent: John Martin

Office: 568-6296 FAX: 568-9464

E-mail: bwtf@burrillville.org

Animal Control

131 Clear River Drive

Animal Control Officer: Ron Woods

Office: 568-9480

FAX: 568-9471

E-mail: aco@burrillville.org

Jesse M. Smith Memorial Library

100 Tinkham Lane, Harrisville

Library: 710-7800 FAX: 710-7772

E-mail: jmslibrary@yahoo.com

Pascoag Public Library

57 Church Street, Pascoag

Library: 568-6226 FAX: 568-9372

E-mail: pascoaglibrary@gmail.com



State Government Officials

<u>Governor</u> Gina Raimondo www.governor.ri.gov 401-222-8096	<u>Lieutenant Governor</u> Daniel McKee www.ltgov.ri.gov
<u>Secretary of State</u> Nellie Gorbea www.sos.ri.gov 401-222-2357	<u>Attorney General</u> Peter Kilmartin www.riag.ri.gov 401-274-4400
<u>General Treasurer</u> Seth Magaziner www.treasury.ri.gov	



District 23, Paul W. Fogarty, sen-fogarty@rilin.state.ri.us
401-276-5582

District 47, Cale P. Keable, rep-keable@rilin.state.ri.us
401-222-2258

District 48 Brian C. Newberry, rep-newberry@rilin.state.ri.us
617-406-4619

Burrillville Town Hall
Office of the Town Manager
105 Harrisville Main Street
Harrisville, RI 02830