

Burrillville Bugle

Fall-Winter 2022



Town Hall and Annex Hours

Mon - Wed. 8:30 am to 4:30 pm, Th. 8:30 am to 7:00 pm, Fri.
8:30 am to 12:30 pm

Town Hall

105 Harrisville Main Street
401-568-4300
Fax: 401-568-0490

Town Hall Annex

144 Harrisville Main Street
401-568-4300
Building Ext. 127 / Planning Ext.130
Fax: 401-710-9307

Burrillville Historic Community Since 1806
Embracing our Past...Envisioning our Future

| INDEX | Page |
|--|-------------|
| Addiction Assistance Program and Prevention Action Coalition | 38 |
| Adopt-A-Spot | 10 |
| Affordable Housing: Senior and Mixed Families | 63 |
| Animal Control Shelter | 39 |
| Autism Project | 59 |
| Berard-Desjarlais American Legion, Post 88 | 52 |
| Board of Administration –The Assembly Theatre | 64 |
| Burrillville Extended Care | 44 |
| Burrillville Land Trust | 51 |
| Commerce Park | 7 |
| Community Assistance Information | 60 |
| Conservation Commission | 56 |
| Department of Public Works | 20 |
| Department of Public Works, Refuse and Recycling | 23 |
| Emergency Management | 36 |
| Farmers Market | 57 |
| Finance Director | 11 |
| Fire Departments | 66 |
| Historical and Preservation Society | 50 |
| Jesse M. Smith Memorial Library | 46 |
| Burrillville Lions' Club | 50 |
| Parks and Recreation | 28 |
| Pascoag Public Library | 53 |
| Police Department | 34 |
| Post Offices | 65 |
| Redevelopment Agency | 8 |
| School Department | 42 |
| Scouts BSA | 55 |
| Spring Lake Beach | 33 |
| State Government Officials | 67 |
| Tax Assessor | 14 |
| Town Clerk | 15 |
| Town Council President | 4 |
| Town Manager | 6 |
| Waste Management / Sewer Commission | 49 |

How to Get Information/Contact Us

Use this Publication: Contact information, such as phone numbers, extensions, and email addresses are listed within under the department headings.

Town Website: The Town has a website that is full of information for residents and visitors! www.burrillville.org.

- The website is a great tool to find current information about the Town, obtain contact information for all the different Town departments, Town budgets and finances, and very helpful EMERGENCY AND CODE RED INFORMATION.
- **E-Subscribe:** Sign up to receive newsletters, job opportunities, notices, etc., for what interests you and be up-to-date as to what's current in Burrillville.
- **Public Notices:** View current meeting news, job opportunities, press releases, and news from the Parks and Recreation Department, current rubbish and recycling information, as well as a copy of this Burrillville Bugle.
- **Pay Taxes:** For your convenience, you can pay your taxes, using your account number and PIN shown on your bill. There is a convenience fee of 3%, with a minimum of \$2.00.
- **Code Red:** Sign up to be notified by your local response team in the event of an emergency situation or critical community alert.
- **Forms and Documents:** Many of the forms and documents needed to do business with the different Town agencies, such as applications, registrations, tax exemptions forms, etc., can be found right within this tab.
- Click on the **iHelp Center** for links on additional topics of interest, one being a separate website dedicated to promoting Burrillville's quality of life, the natural beauty and local history of our Town. Click on Visit Burrillville for the link.

| Town Council Members | | | |
|----------------------|--|----------|------------|
| Name | Address | Phone | Term |
| Donald A. Fox | 105 Harrisville Main Street Harrisville, RI 02830 | 265-9674 | 11/30/2022 |
| Stephen N. Rawson | 685 Cherry Farm Road Harrisville, RI 02830 | 479-6909 | 11/30/2022 |
| Dennis M. Anderson | 593 Whipple Road Pascoag, RI 02859 | 339-0047 | 11/30/2022 |
| Jeremy P. Bailey | 585 Wallum Lake Road Pascoag, RI 02859 | 402-0289 | 11/30/2024 |
| Justin Batalon | 105 Harrisville Main Street Harrisville, RI 02830 | 338-9958 | 11/30/2024 |
| Amanda K. Gingell | 45 Maple Drive Harrisville, RI 02830 | 578-6182 | 11/30/2022 |
| Raymond J. Trinqué | 300 Centennial Street Pascoag, RI 02859 | 568-0858 | 11/30/2024 |

Town Council President

Donald Fox

Greetings,

Another wonderful summer is in the books. I hope that you all enjoyed the warm season with family and friends. We had great weather to swim, boat, hike, fish, enjoy BBQ's and campfires here in our wonderful town and wherever the summer took you.

Schools are back in swing and free from the Covid-era restrictions. Homecoming weekend will be here soon, and our sports teams are well under way toward more championship drives. A committee has been formed to explore the possible replacement of Alumni Field (high school football field) with an artificial turf, multi-sport field with lights and concessions. This would allow us to play more than a handful of games per year on our field there which is the norm. It will allow for participation by our high school football, soccer, lacrosse, and field hockey teams. It will provide a place for our Burrillville Patriot Youth Football and Cheer program to play and could be used for other community leagues. The committee has already begun to meet, and we encourage public participation.



Municipal operations are back to normal. Buildings have reopened with full access to the public. The Town Council has been meeting for more than a year now in person and with live participation from our residents. This past June, the Town Council passed a budget that addressed our core municipal and school needs. We have seen the elimination of the car tax, for which we are all grateful. Unfortunately, we have seen a severe shift in where our tax burden is distributed through the town. The Covid pandemic saw a massive shift in housing prices as people fled the cities and bought up a particular range of the housing market. Many residents saw the values of their homes go up as the market took off. While this was good if you were a seller, it created a huge increase in the value of those homes. During that run up the Town was mandated by the State to conduct its periodic revaluation of homes. This could not have come at a worse time. As the revaluation process began, at the height of the real estate bubble, inflation as the result of poor Federal policy began to take hold on all of us and we have seen little relief as of this writing. It has been a double blow for some in our community. The Town Council was able to lower the tax rate dramatically because of the higher real estate values but unfortunately those who saw the values of their homes go up so dramatically during the pandemic also saw an increase in their taxes, greater than they are accustomed to.

Despite this unfair hit to a segment of the Burrillville property owners, I am proud to be a part of a group of fiscally responsible Town Council and Administration members who carefully look each budget cycle at how we spend taxpayer money to fund our municipal and school operations.

Charter Review – The Town of Burrillville completed its periodic Charter Review. The Charter is the foundational document for managing, organizing, and running our town. It is reviewed by the Charter Review Commission every 5 years. Suggested changes were brought forth by the Commission, discussed and debated by the Town Council. A few issues will be on the ballot in November for your consideration. Let me once again thank the Committee for the excellent job they did. Please check www.burrillville.org, the Bargain Buyer and social media for information on these proposed changes.

The Assembly Theatre has wonderful performances and activities are booked through Fall and into early winter. The summer food truck events were successful and an opportunity for so many to come out, enjoy time with each other and hopefully learn a bit about the theatre, its history, and upcoming events. Please visit the theatre's website for more information: <https://www.assemblytheatre.org/>.



Let me close with good wishes for a bountiful autumn, as well as a wonderful and joyous holiday season shared with family and friends!

Sincerely,

Donald Fox



Town Manager
Michael C. Wood
X 145
manager@burrillville.org

This will be a short report but there are a few very important topics to cover.

The last State legislative session was, in my opinion, troubling. Not only what passed but what may be coming in the next session or future years. Legislators with an “agenda” tend to be patient and will wait over time to pass legislation that accomplishes their goals piecemeal.

My main concern is the Town’s ability to control its land use and zoning, including affordable housing and density. Burrillville has always cherished its rural, farming, recreation, and open space lifestyle. We have a beautiful community that we have worked hard to maintain!

Burrillville has met the Federal/State goal of 10% affordable housing, but most of Rhode Island communities do not. The larger cities are no longer affordable and are, for the most part, not as safe as they once were with a diminished quality of life.

As a result, State legislative and special interest leaders are pushing for alternatives including the possibility of eliminating single-family zoning and local control over zoning.

This, in turn, will impact our quality of life, potentially redefine who we are as a community, and arguably, home/property values.

I believe this is coming and it will take strong opposition from many different sources, including an active citizenry, to stave off.

The Energy Facilities Sitting Act (ESA) still has not been modified to protect cities and towns that are susceptible to locating energy-producing facilities including, but not limited to, fossil fuel power plants.

Our local legislators and Town officials have continued to push hard to get this outdated law (over 30 years old) modified, but the Rhode Island State House leadership and special interest groups, including some of the environmental lobbies, have blocked reasonable change every time it is proposed.

With the energy market currently in flux, we may be able to get by until things return to normal, but if/when the energy markets return to high profitability for new power facilities, the pressure will be back to construct new power supply in towns like Burrillville.

Public Works Director:

Jeff McCormick, our DPW Director, has left Town service after 12 years in Burrillville. Jeff will now be working for the State but he is a lifelong Town resident and will be involved in the Town’s future.

Best of luck to Jeff and his family, and thank you for a job very well done!

Holidays:

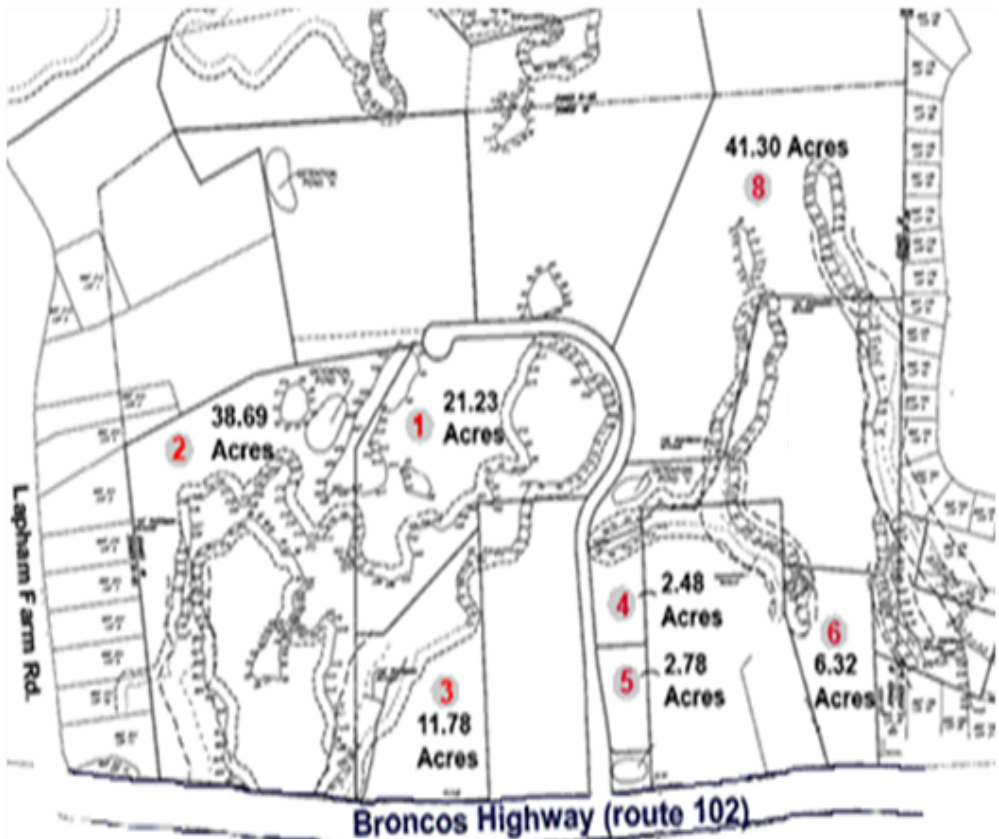
Please have a wonderful holiday season with your families and those you love!

We are looking for businesses generating jobs.

***The Town has acreage for sale
(with water and sewer available)
at Commerce Park.***

***If you or someone you know is looking to locate or expand a business,
please contact the Town Manager or Town Planner at 568-4300 ext.145.***

***Commerce Park is Located off Route 102 between Central Avenue and Lap-
ham Farm Road.***



**Commerce Park
Burrillville, Rhode Island**

Burrillville Redevelopment Agency

James Langlois, Chairman

Much of the agency's effort in 2022 has been focused on the continuing task of rehabilitating Downtown Pascoag, making the area a better place to own or start a business as well as visit and enjoy. Completed and ongoing projects include High Street Park Green Space which features a paved parking lot, walkways and picnic tables. Across the street at Gonyea Park a new shade structure has been installed on the deck between the river and sluiceway. Deck has been refinished and benches installed. Brush and overgrowth have been removed from the Waterfall and rivers edge making the falls visible from the park and street. Also, a natural border has been planted between the park and Dunkin's drive through lane to reduce noise and improve aesthetics.



Permanent overhead String Lighting has been installed over Pascoag Main Street from the intersection of South Main Street east to Nahant Place. This state of the art all weather lighting can produce multiple colors and effects providing a lively ambience and festive appeal. Special thanks to the Pascoag Utility District for their assistance with the project.



A new municipal parking lot has been completed off Park Place providing 30 additional spaces for vehicles visiting downtown business.

The creation of Fountain Park has begun. Located between WellOne (former bank building) and the municipal lot on Park Place, this area will feature a fully functional fountain that will also serve as an irrigation system for plants in the park. Natural seating, lawn area and walkway featuring cherry trees will be topped off by a Band-shell space for entertainment. The parks name is derived from its view of Fountain Square which is the intersection of Sales Avenue, High Street, South Main and Pascoag Main Streets. Two historical storyboards describing the “Fountains of Burrillville” and Main Street Pascoag post WW2 will be installed on lawn area overlooking the fountain. Completion is scheduled for late October of this year.



The complete rehabilitation of the former bank building by WellOne Primary Medical and Dental Care is finished and open to serve patients and staff. We are please that WellOne has chosen to expand in downtown Pascoag. Their private investment in our community is much appreciated as is their help in facilitating Fountain Park.

All these improvements combined with previous enhancements in recent years is creating a positive environment for businesses, tourists, consumers, and residents. More improvements are planned for 2023.

Stillwater Mill Redevelopment District

The Burrillville Redevelopment Agency welcomes Bakers Boffins Automotive and Firelight to the Stillwater Mill Center. These unique establishments feature a little bit of everything with quality and high-tech design. From high quality mechanical restoration to jewelry and design services. Check them out on Instagram @bakersboffinsllc and @firelightbybb.

Remember, the Stillwater Mill Center Pavilion is available to rent for your next event. Please contact the Burrillville Parks and Recreation Department for more information.

Did you know that the Burrillville Redevelopment Agency has electric vehicle chargers available at the Stillwater Mill Center near the playground park and on the Pascoag end of the recreation path on Eastern Avenue? Check them out next time you need to re-charge.

Adopt-A-Spot
568-4300 x145
glabossiere@burrillville.org

We would like to thank all current sponsors for their generous gift of time and money which enhances the beauty of Burrillville, the Town we call HOME.

- | | |
|--|---|
| ◇ American Legion Hall, Post 88 | Pascoag Bridgeway, Veterans' Park |
| ◇ Bella Restaurant | Restaurant Entrance on 102 |
| ◇ Burrillville Conservation Commission | Wallum Lake Road Canoe Launch |
| ◇ Burrillville Conservation Commission | Route 102 Gateway |
| ◇ Burrillville Garden Club | Pascoag Bridgeway |
| ◇ Burrillville Garden Club | Gonyea Park Sign |
| ◇ Burrillville Garden Club | Clean ups throughout Town |
| ◇ Cow's Tail Deli and Creamery | Gonyea Park and Sign |
| ◇ Craig Cayer | Spring Lake Beach Island Entrance |
| ◇ Harrisville Fire Department | Firefighters' Memorial Park |
| ◇ Harrisville Fire Dept. (Hose Co.) | Traffic Island in front of Fire Station |
| ◇ Lions Club | Lewis Bleiweis Park |
| ◇ Lions Club | East Ave. and Harrisville Main |
| ◇ Lynch Fence Co. | Corner of River St. and Chapel St. |
| ◇ Natural Resource Services, Inc. | Clocktower Square |
| ◇ Unilock | Freedom Park Sign |
| ◇ Liberty Farm | Spring Lake Beach Sign |
| ◇ The Spink Family | Bridgeton Mill Village Plantings |

The Adopt-A-Spot program draws on the generosity of local businesses and organizations to help beautify our Town. Each space is uniquely designed and kept up by the sponsors. Please take notice of their beautiful work throughout the spring and summer season and consider adopting a spot of your own.

Available Locations

- Beckwith Bruckshaw (various locations)
- Commerce Park Entryway
- High Street Park
- Jesse Smith Library, right side
- Jesse Smith Library, Top of Stairs
- Memorial Lodge Skate Park
- Pascoag Bridgeway
- Summer and Shea Lane Triangle
- Tinkham Land Entrance
- White Mill Park, between signs
- White Mill Park Entrance



Please support local business and service organizations!

Finance Director

Leslie McGovern

X161

finance@burrillville.org

Tax Assessor: Jennifer Mooney X181

Deputy Tax Collector: Melissa Dupont X184

A Message From The Finance Staff:

We would like to congratulate Karen Jolicoeur in her new role as Financial Aide in the Tax Collector's Office. Karen began her journey with the Town in September 2022. Please join us in welcoming Karen aboard.

FYE 2022 Audit:

The audit for fiscal year ending June 30, 2022 is currently under way and will be completed before the end of the calendar year. The Town continues to maintain a strong financial management operation.

Cayer Caccia LLP is no longer the Town's Audit Firm. We would like to thank Mark, Donna, Geri, Brian, and Betty Ann for their many years of superior audit services.

Marcum LLP has been selected as the Town's new audit firm for the next three fiscal years (2022–2024 audits). We are looking forward to working with Marcum LLP.

American Rescue Plan Act (ARPA):

The Town of Burrillville will be receiving a total of \$5,037,776 in ARPA Funding (County \$3,273,692 and NEU \$1,764,084). The town has received: \$882,042 in NEU funding on July 2, 2021, \$1,636,846 in County Funding on August 30, 2021, and \$882,042 in NEU funding on July 13, 2022. The US Treasury is working on a distribution timeline for the remaining \$1,636,846 of County funding.

\$1.8M of ARPA funds have been committed thus far:

- \$1.5M Infrastructure for \$0.5M Hazard Mitigation Plan, \$0.4M PUD Well, \$0.3M Fire Alarm Box
- Project, and \$0.3M 800 MHz Radio System Upgrade
- \$0.2M Public Safety for Police / Fire Communication Center
- \$0.1M Non Profit Grants

Debt:

Town was assigned a rating of "AA" by S&P Global Ratings on May 17, 2022 in regards to the School Construction Bond obligation.

The Town recently closed on the following bond:

- School Construction Bond: \$5.9M RIHEBC Bond, Series 2022D on May 24, 2022. This Bond will receive a 50.8% to 60.8% RIDE reimbursement rate. Rate received based on project completion dates.

2022 TAX BILLS

Due dates are as follows:

- 1st Qtr. – July 26 thru August 9, 2022
- 2nd Qtr. – October 18 thru November 8, 2022
- 3rd Qtr. – January 17 thru February 1, 2023
- 4th Qtr. – April 18 thru May 2, 2023

All delinquent 2022 taxes are assessed interest at a rate of 12% per annum.

2022 TAX BILLS

The 2022 Tax Bills were mailed July 13, 2022.

Need a reminder?

Sign up on our website “**E-subscribe**” to receive quarterly reminders of upcoming due dates. Be sure to check off “Tax Collector”.

“Go Green”

Help us save you money by supplying our office with an **email address**, for future correspondence.

Payment methods:

- AUTOMATIC CLEARING HOUSE (ACH) – Automatic Payments
- Auto debit is free and prevents interest charges on your tax account. Withdrawals are available on a monthly, quarterly or annual schedule.
- Forms are available online at www.burrillville.org or in the Tax Office. Please allow one week to set up or cancel the debit in writing or email.
- DEBIT OR CREDIT CARD in office or online at www.burrillville.org. **NO payments accepted over the phone.** Your account number is listed on your tax bill. If you do not have your bill, please contact the Collector’s Office. **All card payments are assessed a convenience fee of 3% with a minimum of \$2.00 (Visa / Mastercard Only).**
- DROP BOX is available near the rear entrance of the Town Hall for your convenience. Please **do not put any cash in the drop box**, checks and money orders only.
- The Town participates in State programs such as placing blocks with the RI Registry of Motor Vehicles (DMV) and RI Income Tax Refund Offset program to aide in the collection of delinquent taxes.

Any returned checks/ACH are assessed a \$35.00 fee.



Motor Vehicle Registrations/Renewals

The State has expedited the Motor Vehicle Tax Phase Out. Therefore, there are no 2022 Motor Vehicle Tax Bills. However, this does not eliminate any outstanding taxes from prior years. Outstanding taxes from prior years will still cause a block on registration renewals until paid in full. If a block is placed with the DMV, ALL motor vehicle taxes under your name must be paid in full by cash, money order, or credit card. A personal check will delay the release by 10 business days. Note, the registration block may take up to 48 hours to be released by DMV after the request for release is made by the Tax Collector's office.



Did not receive a bill?

The failure to receive a bill does not eliminate the requirement for a timely payment of any taxes that are due.

- Contact the Tax Collector's office for balances due 401-568-4300 x 184.
- If you move, please contact the Tax Assessor's office and the DMV to update your mailing address.
- Tax bills were mailed on July 13th, 2022. If you did not or do not receive a bill, please contact the Assessor's Office. 401-568-4300 x 181. **Reminder:** The State has expedited the Motor Vehicle Tax Phase Out. Therefore, there are no Motor Vehicle Tax bills.

Financial Difficulties?

If you are having financial difficulties, please contact the Tax Collector's office as soon as possible. Early intervention is the key to the Town's ability to be of assistance.



Tax Assessor
Jennifer Mooney
X125
assessor@burrillville.org

Office Hours: Monday thru Wednesday 8:30 am - 4:30 pm, Thursday 8:30 am - 7:00 pm, and Friday 8:30 am - 12:30 pm. All taxpayers are welcome to stop in the Assessor's Office for a copy of your property record card and the Assessor's map showing your land lines. There is no charge to the homeowner for this info.

Due to the State of Rhode Island's budget surplus this year, the State has eliminated motor vehicle taxes. Therefore, Burrillville did not mail out any new motor vehicle tax bills this year. The elimination of motor vehicle taxes going forward, however, does not wipe out any outstanding taxes owed from prior years. Unpaid motor vehicle taxes from prior years will still cause a block on any registration renewals until paid in full. If you think you have outstanding motor vehicle taxes, please contact the Tax Collector's office at 401-568-4300 x 184.

New values from the 2021 Full Revaluation are in effect for the tax bills mailed out in July 2022. If you feel your value is incorrect, you have the right to appeal. The deadline to file an appeal is October 24, 2022. Appeal forms are available on the Town website on the Tax Assessor page, or you can stop by the Tax Assessor's office to get an appeal form.

Exemptions available to Burrillville taxpayers include: Senior, Disability, Blind, Veterans, Prisoner of War, Gold Star Parent and a Historical Cemetery Preservation Property Tax Abatement. The Senior and Disability Exemptions are income based and must be renewed annually. To qualify for a senior exemption you must be 62 years of age, and you must have owned and occupied residential property in Burrillville for 3 years prior to the filing of the application. Applications must be received by December 31, for the next tax roll. There is one senior exemption allowed per household. If you qualify, please stop in to the Assessor's Office with proof of age.

The Disability exemption is available to taxpayers who are totally disabled and receiving benefits. A copy of the "Notice of Award Letter" is required to receive the exemption. Each year upon renewal you must submit a copy of your "New Benefits Letter" to receive the exemption for another year. If you have any questions with regards to available exemptions please call the Assessor's Office at 568-4300, ext.125.

Exemption applications must be received by:

- Senior and Veteran: December 31, 2022
- Disabled: January 31, 2023

Qualified exemptions will be applied to the 2023 tax bill.

Town Clerk
(401) 568-4300 Ext. 124
Townclerk@burrillville.org

Office of the Town Clerk

- | | |
|--|----------------------|
| ♦ Marriage Licenses | ♦ Notary Public |
| ♦ Birth, Marriage and Death Certificates | ♦ Probate Court |
| ♦ Dog Licenses | ♦ Recorder of Deeds |
| ♦ Hunting and Fishing Licenses | ♦ Voter Registration |

Fishing Licenses

The Town Clerk's office is an authorized sales agent for the Rhode Island Department of Environmental Management (DEM) and can issue all fishing and hunting licenses and permits from a fully web-based system. There is an Enhance Access Fee of \$2 per license and \$0.50 per permit for residents and \$3 per license and \$1 per permit fee for nonresidents.

Notary Public

Notary public services are available at the Town building during regular hours. There is no fee for this service.

Town Council

Regular meetings of the Burrillville Town Council are scheduled for the second and fourth Wednesday of each month at 7:00 p.m. in the Town Council Chambers. Schedule changes are posted at the town building and on the Town website.

To appear before the Town Council, contact the Town Clerk's office for the procedure for submitting an agenda request.

Dog Licenses

Dog licenses can be requested online. Find the instructions and the link to the online dog licenses on the Town Clerk's page of the Town website. Complete the application, upload your dog's rabies certificate and pay online, we send you the tag and certificate. There is an additional fee for this convenience: \$1 each dog and 53 cents each transaction.

Dog licenses are renewable in April every year, regardless of when rabies are due. Look in the Bargain Buyer for the announcement when the new tags are available.

Vital Records

The Town Clerk's office provides certified copies of birth, death and marriage records.

- Vital records are registered in the town or city in which the event occurred, or the city or town where the person was living.
- Certified birth records for people born in Rhode Island in 1960 and later can be issued at all city and Town Clerks offices.

- The fee for records requested by mail are \$25; fees for records requested in person in the Town Clerk's office are \$22. Additional copies of the same record are \$18.00 if obtained at the same time.
- To receive a certified copy of a birth, death or marriage record via mail, you must send a readable copy of your picture identification and a completed application which you can find on the Town Clerk's page of the Town website. If you cannot access the application, please provide the following information:
 - ◆ the name on the birth, death or marriage record
 - ◆ the date and city/town where the event occurred
 - ◆ your relationship to the person named on the record
 - ◆ why you need the record
 - ◆ for births only, provide the name of the father and the mother's maiden name
 - ◆ your signature and printed name
 - ◆ your mailing address and your home phone number in case we need to contact you
 - ◆ send payment with your request, check or money order
- **How to request a vital record online.** All you need is your credit card and a copy of your government issued identification. The same rules apply as if requesting in person or by mail. You can find the rules of who has access to vital records, and a link to the online vitals, on the Town Clerk's page of the Town website. There is an additional \$5 processing fee for online orders. Call the Town Clerk's office at 568-4300 with any questions.

Marriage Licenses

Rhode Island residents - Couples should apply for a marriage license at the Clerk's Office in the city/town where one (or both) of the parties reside. If at least one of the parties lives in Rhode Island, the marriage license is valid in any city or town and the ceremony may take place anywhere in Rhode Island.

Non-residents - If neither party lives in Rhode Island, the license must be obtained at the Town Clerk's office in the city or town where the ceremony will take place.

Marriage licenses cost \$24. The license is valid for 90 days. Call the Town Clerk's office for documentation requirements.

Burrillville Board of Canvassers

Anita Hurley-Diez, Chair
Marjorie Fenley
Betsy Alper

Blanche Boisvert, Vice Chair
Peter Houle
Vicki T. Martin, Clerk

The Board of Canvassers is located at the Town Clerk's office and is available during Town Building hours. You may reach the Board of Canvassers at elections@burrillville.org.

Election News

2022 General Election

A general election will be held in Rhode Island on November 8, 2022. All of Rhode Island's executive officers are up for election as well as a Rhode Island seat in the United States House of Representatives. In addition, there will be local races of interest. These include Senator in General Assembly District 23, Representative in General Assembly Districts 47 and 48, as well as Town Council and School Committee.

The last day to register to vote in the 2022 general election is Sunday, October 9, 2022. The Town Building will be open from 9:00 a.m. to 4:00 p.m. on October 9th only to accept voter registrations.

Polling Locations

| | | | |
|------------|-----------------------------------|------------|-----------------------------|
| Precinct 1 | Steere Farm Elementary School | Precinct 4 | Callahan Elementary School |
| Precinct 2 | Beckwith-Bruckshaw Memorial Lodge | Precinct 5 | Burrillville Police Station |
| Precinct 3 | Burrillville High School | Precinct 6 | Burrillville Middle School |

Please check the Town website or contact the Board of Canvassers at (401) 568-4300 Ext. 132 if there is any doubt about your polling location.

Redrawing of District and Precinct Lines

Rhode Island enacted new congressional district boundaries on February 16, 2022 following completion of the United States census. The boundary between districts 47 and 48 was moved. This move affects the voting precincts of some voters in the eastern part of Burrillville.

In response to the move in district and precinct lines, a post card was mailed to every voter this summer informing them of their voting precinct and location.

Local Referenda

At the election to be held on Tuesday, November 8, 2022, the voters of the Town of Burrillville will have submitted for their approval or rejection, 13 questions. The questions are in response to recently passed legislation and proposed additions, deletions or changes to the Burrillville Home Rule Charter. The questions will begin at #4 on the ballot due to the State referenda items preceding local items.

The Town has had informational material prepared to allow voters time to study the questions to be considered on November 8, 2022. In this guide, the 12 questions relating to proposed changes to the Charter will show cross outs where text is to be deleted, and underlines where text is to be added. We present the proposed change and what those changes mean. Additionally, you may find this information on our website at www.burrillville.org.

Please note that, the 2022 ballot will be two sided. Voters must remember to turn the page and vote the questions on the back of the ballot, if they wish to vote all questions.

Rhode Island Voter Information Center: <https://www.sos.ri.gov/> and choose the Elections and Voting tab.

- Check your voter registration
- Find your current elected officials
- View sample ballots for upcoming elections
- Locate your local board of canvassers
- Find where to vote

How do I register to vote?

You can now register to vote online at the Voter Information Center: <https://www.sos.ri.gov/> and choose the Elections and Voting tab. Here you can register to vote, check your voter registration and find your polling location. You can also register to vote in Rhode Island by completing a voter registration form which may be obtained at the Burrillville Board of Canvassers at the Town building or the RI Board of Elections. You can download the form from the State Board of Elections website: <https://elections.ri.gov/voting/registration.php>. Many agencies which serve the public, such as the Department of Motor Vehicles, Department of Human Services, and the Department of Mental Health offer voter registration services to their clients as mandated by the National Voter Registration Act.

Election Officials Needed

In order to serve as a poll worker you must:

- Be registered to vote in Rhode Island
- Be able to read the Rhode Island Constitution in English
- Be able to write your own name
- You cannot serve as a poll worker if you are a convicted felon.
- You cannot serve as poll worker in a primary if you are a city, state or federal employee.

You must attend a training class that may exceed three hours. You must be available to work the day of the election, from 6:00 a.m. until approximately 9:00 p.m. You cannot leave your assigned polling place for any reason; this includes voting, lunch, or dinner breaks.

High School Students: You may be eligible to work at the polls if you are at least 16-years-old, a junior or senior, have at least a 2.5 GPA, and receive permission from school officials. Contact your Board of Canvassers for more information.

Find the application form online at www.burrillville.org or visit the Board of Canvassers Office, 105 Harrisville Main Street, Harrisville RI 02830.

VOTER ID

Voter ID became law in 2014. Under this law (RIGL §17-19-24.2) all voters are required to present valid photo identification prior to voting at the polls. Voters will need to present one of the following forms of photo ID:

- RI Driver's License/Driver's Permit
- RI Voter ID Card *
- U.S. Passport
- Photo ID issued by a U.S. educational institution
- U.S. military photo ID



- Photo ID card issued by the United States or the State of Rhode Island
- Government issued medical card with photo
- ID Card issued by any federally recognized tribal government

*The Rhode Island Department of State is issuing free voter photo ID cards to individuals who do not possess any of the valid Photo IDs listed above. See the Department of State's website for additional information on the program, or call (401) 222-2340.

Protecting Your Vote

No eligible voter will be turned away at the polls. Voters who do not bring ID to the polls can vote using a standard provisional ballot.

Mail Ballot Overview:

Any otherwise qualified Rhode Island voter may vote by mail ballot in the following circumstances:

1. A voter within the State of Rhode Island who is incapacitated to the extent that it would be an undue hardship to vote at the polls because of illness, mental or physical disability, blindness or serious impairment of mobility.
2. An elector who is confined in any hospital, convalescent home, nursing home, rest home, or similar institution, public or private, within the State of Rhode Island. <http://www.elections.ri.gov/voting/nursing.php>.
3. An elector who will be temporarily absent from the state because of employment or service intimately connected with military operations or who is a spouse or legal dependent residing with that person, or a United States citizen that will be outside of the United States. (Please Note: any voter qualified to vote a category 3 mail ballot will also be allowed to cast a mail ballot pursuant to the Uniformed and Overseas Citizens Absentee Voting Act "UOCAVA Act" <http://sos.ri.gov/elections/voters/overseas/>)
4. An elector who may not be able to vote at his or her polling place in his or her city or town on the day of the election (see "No Excuse Mail Ballot Voting" below).

All mail ballots must be received by the State Board of Elections at 2000 Plainfield Pike, Cranston, RI 02921 by 8:00 P.M. the night of the election.

No Excuse Mail Ballot Voting

Rhode Island now allows "no excuse mail ballot voting". If you may not be able to get to the polls on Election Day, you can fill out a mail ballot application and receive a mail ballot.

More on voting by mail

Applying for a Mail Ballot <http://www.elections.ri.gov/voting/applymail.php>

Early Voting and Emergency Mail Ballots <http://www.elections.ri.gov/voting/emergency.php>

Military and Overseas Voters <https://www.sos.ri.gov/> and choose the elections and voting tab.

Elections Publications

The Rhode Island Department of State prepares many elections-related publications, including a guide for candidates and elections calendars. When published, you can find a copy online at their website: <https://www.sos.ri.gov/> and choose the elections and voting tab.



Department of Public Works

200 Clear River Drive, Oakland, RI 02858
Phone: 401-568-4440 Fax: 401-568-9469
dpw@burrillville.org
Hours: Monday - Friday 6:30 am to 3:00 pm

Town Minibus

The Town of Burrillville Department of Public Works offers a minibus transportation service for eligible residents of Burrillville. To be eligible for this service, Burrillville residents must be 62 years old or older or totally disabled. The minibus operates on a regular schedule and will pick up any eligible Burrillville resident upon request. The schedule is as follows:

- Mondays, Tuesdays and Thursdays – bus available for doctors' appointments between 9 a.m. and 2 p.m.
- Wednesdays – bus available for grocery shopping trips to the Village IGA Marketplace in Pascoag
- Fridays – bus is available for scheduled trips for up to 12 people for excursions or shopping trips around the state. One trip per month to Dino's

This bus service is available on a first come, first served basis, and is free of charge to Burrillville residents.

Please call Kelly at 568-4440 ext. 201 with any questions or to schedule the minibus.

The Town of Burrillville Department of Public Works continues working on regular maintenance projects of street sweeping, brush cutting, catch basin repairs, drainage improvements, catch basin cleaning, sidewalk repairs and roadway repairs. Additionally, the Department works on major roadway and infrastructure projects each construction season. Here is the status of the projects currently under construction or recently completed.

- **Sayles Avenue, Pascoag – Complete**
- **Pascoag Muni Parking Lot, Pascoag – 28 space much needed paved parking lot in downtown Pascoag – Complete**
- **Fountain Square, small park with fountain, Pascoag – 50% Complete**
- **Police Shooting Range, small firing range for police Department, Buck Hill area – 10% Complete**
- **Harrisville Village – phased reconstruction of village roads and walks – Next Spring Start**
- **High Street Park – new pedestrian bridge across river to Riverwalk deck, funded by grant, Pascoag (across from Gonyea Park) – Next Spring Start**

- **Burrillville Middle School practice field**, regulation sized natural grass field behind BMS, fall procurement RIDE, – **Winter Project**
- **Neighborhood Projects** – Some of the smaller paving projects throughout town include paving sections
- **Drainage** – Since the June 26, 2020 deluge of 2 inches of rain in a half hour, that heavy rain event highlighted multiple locations that need to be addressed over the next couple years. Some yet to be started include Manley Drive, Lake Drive, Rock Avenue, Spring Street and several other locations
- **Tree Trimming** – A combination of our continuing brush clearing with the articulating flail machines, tree trimming by DPW forces and the use of outside contractors for large dangerous trees needing bucket trucks or cranes is an ongoing yearly effort

DPW Engineering Projects – The Director of Public Works has been working with consultants on numerous future construction projects to prepare feasibility studies, construction plans, technical specifications, permits and various annual reports. Below is status of these projects.

- **Harrisville Dam – Design Development Phase**
- **Wallum Lake Dam**, Route 100 flooding protection and water control improvements
- **Recreation Center (Lodge) Playground**, Parking expansion and pathways – **In Design Development**
- **Crosswalks**, Crossing at Assembly and Maple Street, permits received – **Construction Pending**
- **Handicap Parking at Assembly**, Permit received
- **2023 Road Reclamation design/construction**, Design/procurement
- **Pavement Management Program**, Ongoing road rating system
- **RIPDES**, Annual storm water reporting
- **Landfill Monitoring**, Groundwater and gas monitoring – **Ongoing Reporting**
- **Parks and Rec master planning** – **Ongoing**
- **Bridge and Culvert Railing Analysis** – **Future**
- **Mapleville Main Street Reconstruction** – **Future**
- **Recreation Center Building**. (Lodge) Expansion Study – **On Hold**

STATE ROADS

Rhode Island Department of Transportation Projects – DPW is coordinating with RIDOT regarding the status and potential issues regarding State projects within the Town of Burrillville. These projects include:

- Victory Highway (between East Avenue and Bridge 105), – **In Design**
- Route 102 bridge over Clear River Joslin Road, – **Construction Ongoing**
- East Wallum Lake Road and Route 100 intersection – **RIDOT has taken on** this project; no construction date available.

SEASONAL HELP

DPW Summer Crews – The summer part-time employees will continue to maintain all of the Town Parks and Recreational facilities April through November. Their work includes grass cutting, weed clearing, trash removal and leaf removal in the fall.

WINTER

The Department of Public Works will be treating roads with salt/sand and plowing as needed with our existing crews complimented by on-call drivers. Please heed all winter parking bans to allow plow trucks to get through tight roadways and pay attention to garbage collection notices. Refer to the Town website to report mailbox damage etc.



DPW, Refuse and Recycling
Andrea Hall, Recycling Coordinator
401-568-4440 x12
ahall@burrillville.org
www.burrillville.org/refuse

Rejected Loads on the Rise at Rhode Island Resource Recovery: Burrillville's current recycle rate is 26.3%. Residents continue to do a great job, however there are many items still ending up in recycling carts that are not recyclable and are causing recycling loads to be rejected. Recycling loads that are contaminated or contain prohibited items cost the Town \$250, and all the contents of that load must be landfilled at \$54/ton. An average recycling load from Town weighs about 5 tons, meaning a rejected load costs the Town about \$520.

While nobody's perfect and mistakes happen, please do your part to keep the following items (all seen recently in the recycling) OUT of your recycling bin: **Food, leaf and yard debris, construction and demolition debris, clothing, textiles, and tarps, plastic bags, recyclables IN plastic bags, diapers, tires, chains, cables, wires, ropes, hoses, household hazardous waste, propane tanks, scrap metal and paint.**

Please take the time to review the list of accepted items and contact the Recycling Coordinator with any questions. For any questions on the Do's and Don'ts of recycling in RI, please visit www.RecycleTogetherRI.org, or call the Town's Recycling Coordinator at 568-4440 x12 or ahall@burrillville.org.

Thank you for helping to Keep Burrillville Beautiful! Thank you for recycling!

WEEKLY SET OUT REMINDERS

- Plastic bags are NOT allowed in the recycle cart. No bags, no bags of bags, and no bagged recyclables.
- Please keep carts 3 feet apart and at least 3 feet from obstacles such as mailboxes, cars, etc.
- Lids must be fully closed.

UPCOMING RECYCLING EVENTS

Green Festival: A community event offered by the Pascoag Utility District and Department of Parks and Recreation that runs from 10:00am – 2:00pm on September 10th at the Stillwater Mill Complex. Rain date is September 24th. Approximately 1000 attendees participate each year and visit with Green Vendors, learn about energy conservation and recycling, and have the opportunity to enjoy food and beverages prepared by a local food truck. For more information on this year's Green Festival, contact Desarae Dolan at the Pascoag Utility District: 401-568-6222 x223 or ddolan@pud-ri.org or Andrea Hall.

E-Waste Event: Electronic waste collection event on October 22nd from 9:00am-12:00pm at the Department of Public Works. Electronic waste includes computers, monitors, laptops, and TVs. This is a drive thru, drop off event. Appearances are not required. Visit indiecycle.blogspot.com for a list of accepted items or contact Andrea Hall for more info.

Shred Event: Shred event on October 22nd from 9:00am-12:00pm at the Department of Public Works. Appointments are not required. Limit of one banker's box size per person to limit wait times. Contact Andrea Hall for more info.

Field Trips: Visit RIRRC's website for virtual field trips and tours of the landfill to see how the single stream sorting process separates our Town's recyclables: www.rirrc.org/education-program-support/virtual-tours.

Refuse & Recycling Information

| | | |
|----------------------------|----------------|--|
| Recycle Coordinator | 568-4440 x12 | ahall@burrillville.org |
| Waste Management | 1-800-972-4545 | |
| RIRRC | 942-1430 | www.rirrc.org |

DELAYS DUE TO WEATHER EVENTS OR HOLIDAYS

There are three ways to stay up to date on changes/delays:

1. Visit the Refuse & Recycling webpage
2. Check the Refuse and Recycling Voicemail Message
3. Sign up to receive Town Alert emails on the main page of the Town website www.burrillville.org/subscriber.

As soon as Waste Management notifies the Town of any issues causing a delay or cancellation, that information is made available to residents. Information is updated immediately even when a decision is made after normal working hours, including over the weekend.

Proper Weekly Set Out:

- Trash and recycling carts are the property of the Town. No markings are permitted on the cart other than in the white address label on the top of the lid
- Place one cart on each side of the driveway **or** place carts 3ft apart from one another and from other obstacles
- Place carts no more than 3ft away from the curb or road edge
- Arrows on the cart lid must face the street
- Cart lids must be fully closed with no material sticking out
- No material may be placed on top of the cart lid
- Residents are allowed one BLACK lid Town owned cart for trash, and one YELLOW lid Town owned cart for recycling
- Place trash and recyclables curbside no more than 24 hours before and no later than 7:00 AM on your scheduled collection day
- Excess trash can be placed next to the cart in a Town approved Overflow Bag
- Excess recycling can be brought to the Whipple Ave Facility and placed in the Mixed Recycling dumpster

Recyclable Items Accepted in the YELLOW Lid Recycling Cart:

- Milk & juice cartons
- Juice boxes (juice pouches and straws are not accepted)
- Glass containers
- Plastic containers (up to 5 gallons)
- Metal and aluminum cans, metal lids, foil & pie plates
- Mixed paper, newspapers and inserts
- Thin cardboard –cereal/pasta boxes, tissue boxes etc. (**No refrigerated containers: beer, soda or frozen food boxes**)
- Corrugated cardboard (must be flat, cut into pieces that fit loosely in cart, not larger than 3' x 5')
- Pizza boxes that are not greasy

Empty & rinse all recyclables. Replace plastic caps and trigger sprays. Place recyclables loose in the cart. **No plastic bags in your recycle cart.**

Cart Maintenance: Residents are responsible for periodic cleaning/disinfecting carts, properly storing carts when not in use, and cart replacement due to normal wear and tear. Contact the Recycling Coordinator for repairs to cart wheels, axles, lids and hinge pins.

Exchanging Carts: Residents can exchange their 65-gallon Town owned trash cart for a larger 95-gallon cart for a onetime charge of \$50. 65-gallon recycling carts can be exchanged for a larger 95-gallon recycling cart for no fee. Cart(s) to be exchanged must be clean and in good condition. A \$15 administrative charge will be assessed if the Town delivers and exchanges the cart(s). Residents may exchange their 65-gallon carts for smaller 35-gallon carts for no fee. A \$15 administrative charge will be assessed if the Town delivers and exchanges the cart(s). No administrative charge will be assessed if the resident exchanges the cart(s) at the Department of Public Works. Exchanged carts are subject to availability.

Overflow Bags: Residents with excess trash can purchase Town Overflow Bags at DPW and IGA. Bags are \$3 each and are sold in sleeves of 5 at IGA. Residents can purchase single bags at DPW.

What to do If Trash/Recycling was not Collected: Contact Waste Management at 1-800-972-4545.

Whipple Avenue Recycling & Compost Facility (350 Whipple Avenue, Oakland, RI)

Hours: Whipple Avenue is open every Wednesday & Saturday from 9:00 AM TO 1:00 PM, weather permitting. **Proof of Residency** is required to use the Whipple Avenue Facility.



Items ACCEPTED at the Whipple Ave. Recycling & Compost Facility

Christmas Trees - First two Wednesdays and Saturdays in January from 9:00 AM to 1:00 PM. Trees must be cleaned of all ornaments and tinsel. No plastic bags permitted.

Clothing & Textiles - Includes items suitable for reuse and items to be processed as rags. Place in Clothing & Textile Bin at The Whipple Avenue Recycling & Compost Facility.

Cardboard - Cardboard of all sizes including pieces larger than 3'x5' can be placed in the cardboard dumpster.

Excess Recyclables/Single Stream Recyclables - Excess recyclables that would normally go in your yellow topped cart.

Mattresses/Box-Springs - No futon mattresses, mattress pads, or toppers. No severely damaged, wet, twisted, frozen or soiled mattresses.

Metal (scrap) - Bicycles, rims, lawnmowers (drain oil/gas), grills (cleaned), exercise equipment, pipes, metal cabinets, and other miscellaneous scrap metals.

Non-Freon Appliances - Stoves, washers, dryers, dishwashers.

Plastic (Rigid) - Children's toys, hose reels, lawn furniture, etc. Only items **composed entirely of rigid plastic** are recyclable in the Rigid Plastic container at Whipple Ave. No metal, no motors, no batteries.

Tires - Must be off the rim. Limit of 4. No oversized tires. **Yard Waste** - Brush must be 3" diameter or less & cut in 5' lengths or less. Place leaves in paper bags only.

Yard Waste - brush must be 3" diameter or less & cut in 5' lengths or less. Place leaves in paper bags only.

Disposal of Items NOT ACCEPTED in Curbside Carts

Appliances/White Goods - Appliances are collected twice per month for a fee of \$21 per item. Appliances include washers, dryers, stoves, refrigerators, air conditioners etc. Call Waste Management to schedule a pickup. Waste Management will not refund residents for items scheduled for pickup that disappear prior to the collection date. Non-Freon appliances can be brought to Whipple Ave for no fee. Local metal recyclers advertising in the Bargain Buyer will often pickup Freon appliances at no charge.

Bulky Items - Bulky items are collected twice per month for a fee of \$18 per item. A bulky item is an item of solid waste that is not recyclable and is too large to fit inside a bag placed inside the Town provided cart. Examples include couch, chair, desk, rugs, carpets, etc. Call Waste Management to schedule a pickup. Waste Management will not refund residents for items scheduled for pickup that disappear prior to the collection date. Residents with a large amount of bulky items can utilize the Bagster Program. Contact the Town's Recycling Coordinator for information on Bagster. Bulky items left curbside for a period of more than one day are in violation of Section 22-43 of the Solid Waste Ordinance and may be subject to fines and penalties.

Books - Books that are in good condition can be donated to Savers or Salvation Army.

Compact Florescent Light Bulbs (CFLs) - Bring to an Eco-Depot, or check your local hardware store.

Computer Ink Cartridges – Bring to DPW to be donated to the Burrillville Lions.

Construction/Demolition Debris – Anything that was or could be attached to your home is considered construction debris. Examples include windows, shower doors, wood, bathtubs, toilets, sheet rock etc. Bring to RIRRC, hire a private hauler, or use the Bagster program.

Excess Waste Due to a Large Cleanout or Renovation—Hire a private hauler or use the Bagster Program. Contact the Town's Recycling Coordinator for information on Bagster bags.

Hazardous Electronic Waste (E-waste) – TV's, computers, monitors and laptops – bring to one of five state collection including RIRRC. Call RIRRC for more information and hours.

Hazardous Household Waste – chemicals, fertilizers, propane tanks, oil based paint, pool chemicals, gasoline, transmission fluid, etc. - Bring to Eco-Depot. Contact RIRRC to schedule an appointment.

Medical Syringes – Place in hard plastic container (laundry detergent bottle, bleach bottle etc.) seal cap tightly with duct tape and place container in the trash.

Plastic Bags – tie in a knot and drop off at any ReStore bin, including Brigido's IGA.

Pellet Bags –drop off at any ReStore bin, including Brigido's IGA.

Prescription Drugs –Bring to Burrillville Police Department. Do not flush down the toilet.

Styrofoam- Bring to RIRRC. Foam must be clean, dry and bagged in clear or translucent bags. No spongy foam (#1 Fan fingers etc.) and no packing peanuts.

Used Cooking Oil — Bring to RIRRC.

Used Motor Oil, Oil Filters, Car Batteries – Dispose of at DPW during normal business hours. 5-gallon limit for motor oil.

REFUSE & RECYCLING HOLIDAY COLLECTION SCHEDULE

When your regular collection day falls on a holiday, **trash and recyclables are delayed by one day for the remainder of the week**. Monday's trash is collected on Tuesday, Tuesday's on Wednesday etc.

2022 Holidays that delay Trash & Recycling collection

| | |
|-----------------------------|-------------------------------------|
| Martin Luther King, Jr. Day | Monday, January 17 th |
| Memorial Day | Monday, May 30 th |
| Independence Day | Monday, July 4 th |
| Victory Day | Monday, August 8 th |
| Labor Day | Monday, September 5 th |
| Columbus Day | Monday, October 10 th |
| Veteran's Day | Friday, November 11 th |
| Thanksgiving Day | Thursday, November 24 th |
| Christmas Day (observed) | Monday, December 26 th |

Parks and Recreation

Andrea Hall, Director
Carol Conway, Administrative Aide
200 Clear River Drive, Oakland, RI 02858
401-568-9470 Fax: 401-568-9457
parksandrec@burrillville.org
Find us on Facebook

ANNUAL EVENTS

Santa at Stillwater

The annual Santa event at the Stillwater Mill Center is scheduled for December 3rd from 1:00 p.m. to 3:00 p.m., with a Blizzard date of December 10th.

Santa Calling

Santa and Santa's Helpers will call children 2nd grade and under between Wednesday, November 30th through Sunday, December 4th from 5:00 pm to 8:00 pm.



Forms will be sent home through the schools, as well as available at the Town Hall, Town website, and at the Parks and Recreation Department Office. Registration deadline is November 25, 2022. Volunteers interested in being one of Santa's Helpers are urged to contact the Parks and Recreation Department Office.

Holiday Card Contest

Children from within our schools will create a "Winter Scene in Burrillville" with the top (5) winners' holiday artwork to appear in each (5) pack of cards. Cards will be printed on recycled paper and proceeds will benefit local families during the Holiday Season. Cards will be available for purchase by contacting the Parks and Recreation Department or visiting the Town Clerk's Office or Li'l General.

UPCOMING PROGRAMS

Sunshine Club

The Burrillville Parks & Recreation Department will be continuing the successful "Burrillville Sunshine Club" with the assistance of volunteers Sue Gaudreau and Holly Bisson. The Club meets once per month at the Beckwith Bruckshaw Lodge.

Burrillville Weekend Snack Pack Program

A not for profit joint effort between Burrillville Parks and Recreation, the Burrillville Lions Club, the Jesse M. Smith Memorial Library, and the Berean Baptist Church to provide weekend food for needy Burrillville youth. This program is funded entirely by donations and grants and is made possible by a group of volunteers who assemble and deliver the weekly bags. Contact the Parks and Recreation Department if you would like to make a monetary or non-perishable food donation, or if you would like to assist with fundraising efforts, packing sessions, or delivery of weekly bags. Parks and Recreation Department: 568-9470 or e-mail us at parksandrec@burrillville.org.

Burrillville Weekend Snack Pack Program



Kindness Counts In Our Community

Senior Services

Emergency Grocery and Prescription Delivery

The Parks and Recreation Department is offering a grocery and prescription delivery service for at risk residents or for those who cannot get out. Call 710-7429 for more information. Volunteers are always welcome!

Burrillville Weekend Snack Pack Food Pantry

The Parks and Recreation Department has a food pantry for residents in need. Call 710-7429 for more information. Donations of non-perishable items are always welcome!

Senior Programs

Continuing this fall...Ukulele Music Therapy, Essentrics, Yoga & Flexibility, Let's Keep It Moving, and Strength Training. Contact Parks and Recreation for information.

THE BECKWITH/BRUCKSHAW LODGE (COMMUNITY RECREATION CENTER)

Rent the Lodge

Need a place to hold a fundraiser, birthday party, or other type event? The Community Recreation Center is available for rent on weekends. For more information, contact the Parks and Recreation Department at 568-9470 or parksandrec@burrillville.org.

Public Skating

Public Skating is currently closed.

CURRENT PROGRAMS

| Program | Location |
|---------------------------------|-----------------|
| Men's Softball | Hauser |
| Girls' Softball | Hauser |
| 1 on 1 Hoops Camp | Branch River |
| Zumba | Lodge |
| Yoga | Lodge |
| Afterschool Multisport | SFE, WLC, ATL |
| Sunshine Club | Lodge |
| Strength Training (Seniors) | Lodge |
| Yoga & Flexibility (Seniors) | Lodge |
| Ukulele Music Therapy (Seniors) | Lodge |
| Essentrics (Seniors) | Lodge |
| Let's Keep It Moving (Seniors) | Lodge |
| Writer's Group | Lodge |

(Information and location subject to change)

The Department offers a wide variety of programs and activities throughout the year. Newsletters and calendars are available at the Town Hall, the Parks & Recreation Office, the Community Recreation Center (Beckwith-Bruckshaw Lodge), or by visiting the Parks & Recreation Department webpage on the Town's website at www.burrillville.org or Facebook.

To register, or for information regarding any of the Parks & Recreation programs, contact 568-9470 or via e-mail at ParksandRec@Burrillville.org.

****Information subject to change****

Parks

Bike Path (Harrisville/Pascoag 1 mile, Mowry Street to Eastern Ave – 1.2 mile paved path for walking, running, biking and roller blading. Dirt path to Duck Pond.

Branch River Park (Harrisville off 102) – passive recreation, playground, soccer field, track, ballfields, tennis/basketball courts, and walking trails.

Bleiweis Park (Harrisville, off Rt 98 at Shippee Bridge) – passive recreation, fishing.

Firefighter's Park (Harrisville, across from HFD) - passive recreation.

Freedom Park (Harrisville, next to waterfall) - passive recreation, fishing, and playground.

Gonyea Park (Pascoag between CVS and Dunkin Donuts) – passive recreation.

Hauser Field & Playground (Pascoag, Howard Ave) – ballfields, playground.

Hero Park (Oakland at Police Station) – passive recreation, playground.

Oakland Bike Path & Park (Oakland on Victory Hwy) – 900 ft paved path for walking, biking, roller blading, pickle ball court, street hockey rink, fishing, canoe/kayak access.

Skate Park (Harrisville, across from Sunoco) – skateboard, BMX, scooter

Stillwater Playground (Harrisville at Library precinct) – passive recreation, pavilion, playground.

Tarkiln Pond Park (Nasonville, at Mowry St) – passive recreation, fishing, canoeing, kayaking and boating

Veterans Park/Bridgeway (Pascoag at The Bridgeway) – passive recreation.

White Mill Park (Pascoag, at East Wallum and Rt 100) - passive recreation, fishing, walking path, horseshoes, pavilion, and playground.

Remington Path & Park-The NEW Remington Park is located on Victory Highway. The park features a 900 ft paved path for walking, biking or roller blading, which ends at the Branch River where there is canoe/kayak access and a small area for fishing. Remington Park also offers a pickle ball court and street hockey rink, as well as ample parking.

Bike Path- Run, walk, bike, or rollerblade on the bike path. Our bike path is a 1.2-mile off-road bike path that runs along the former New York, New Haven and Hartford Railway and connects the villages of Harrisville and Pascoag. The paved path has entrances along Mowry Street and Eastern Avenue. At about the halfway point of the bike path there is a paved path with benches and picnic tables that leads towards Duck Pond. The paved path ends at a small cul-de-sac, and a dirt path continues up over a small hill toward the pond.

Skateboard Park - The skateboard park located on Chapel Street is open daily from 9am until dusk. Helmet, knee pads and elbow pads required! Please adhere to all Rules & Regulations posted at the park.

BURRILLVILLE SKATE PARK

This is YOUR Park, please take care of it and keep it clean.

HOURS OF OPERATION 9:00 a.m. to DUSK.

The Park is closed when the gate is closed and locked

USE OF THIS PARK IS AT YOUR OWN RISK.

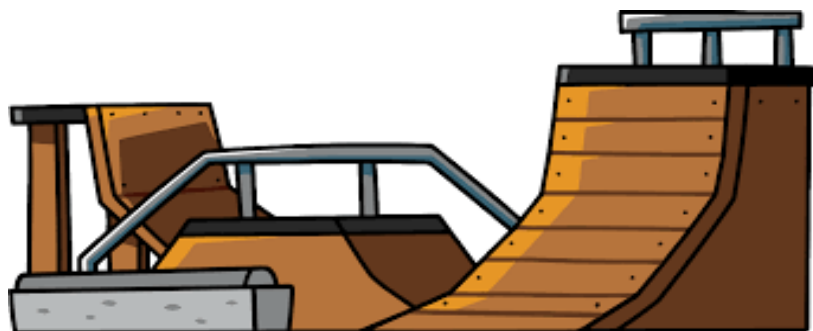
- Skateboarding, rollerblading, scooter riding and BMX bicycle riding can be a HAZARDOUS ACTIVITY that may result in SERIOUS INJURY. The use of personal safety gear and equipment (helmets, elbow pads, kneepads and protective clothing) is strongly recommended.
- The use of a protective helmet is mandatory for anyone 15 years of age or younger.
- No use allowed when equipment is wet or icy. No use allowed during lightning storms.
- Please be respectful and courteous of other users and neighbors.
- Abusive, threatening or obscene language is prohibited.
- Alcohol, Tobacco and Drugs are prohibited.
- If you see someone acting inappropriately, be a mentor and a leader and share tips on skate park etiquette.
- No competitive or demonstration events are allowed without prior approval of Parks and Recreation Department.
- Keep the park clean – No glass containers inside the fenced area. Please use the town recycling and rubbish containers. No littering allowed!

In case of emergency - Police/Fire/Medical: Dial 9-1-1

Report vandalism, suspicious or criminal activity to:

Police Department 568-6255 or Parks and Recreation Department 568-9470

THIS IS AN UNSUPERVISED PARK. THE TOWN OF BURRILLVILLE WILL NOT ASSUME RESPONSIBILITY FOR INJURIES.



LEAGUE CONTACT INFORMATION

| | |
|-----------------------------|---|
| Junior Hockey | http://www.bjhl.org |
| Youth Basketball | http://www.byba.org |
| Youth Soccer | http://www.bgysa.org |
| Men's Softball | Burrillville Men's Softball (Face Book) |
| Little League | http://www.burrillvillelittleleague.org |
| Figure Skating | Burrillville Figure Skating Association (Face Book) |
| Youth Football & Cheer | www.burrillvillepatriots.com |
| Burrillville Girls Softball | http://www.burrillvillegirlssoftball.com |



VOLUNTEERS NEEDED

Are you looking for an opportunity to volunteer for your community? Do you need community service hours? **Volunteers are always needed to assist with our special events**



SIGN UP FOR RECREATION NEWS:

Subscribe to receive Recreation Department News by visiting www.burrillville.org and clicking on 'subscribe to news' tab on the left hand side of the page. Check the 'recreation news' box to sign up for email notifications regarding programs and events sponsored by the Recreation Department.

****Information subject to change****



Spring Lake Beach

Judy Lopez, Beach Manager
200 Clear River Drive
Oakland, RI 02858
401-568-9474
jlopez@burrillville.org

Spring Lake Beach is Closed for the Season

2022 brought yet another amazing summer at Spring Lake Beach! We would like to thank all of you who came to the beach, and enjoyed the many amenities we have to offer. We would like to extend our appreciation to our AMAZING beach staff who worked extra hard this summer to make sure a fun and safe summer was had by all. Be sure to visit again next summer!



Police Department

Colonel Stephen J. Lynch, Police Chief
Wallace F. Lees Public Safety Complex
1477 Victory Highway, P.O. Box 231, Burrillville, RI 02830
Phone: 401-568-6255 Fax: 401-568-9499
burrillvillepolice@burrillville.org

WEBSITE AND FACEBOOK: If you are on Facebook, please take a moment to look us up and “like” our page. Our website: www.burrillville.org/police is the place to go for general information about programs and happenings as well as access to many downloadable forms.

BURRILLVILLE MUNICIPAL COURT – Masks Required in Building:

- Held 1st & 3rd Monday of each month (except holidays)
- Contact information: 401-568-9494 x 1 – lrabideau@burrillville.org
- Website – www.burrillville.org/municipal-court
- 24 hour payment box at police station lobby

E-COMMERCE SAFE ZONE: In order to provide a safe area for any transactions originating from the internet, the Police Department provides two safe locations on the grounds of the Wallace Lees Public Safety Complex:

- South front parking lot, adjacent to the impound fence
- Inside the front lobby of the Police Station

CITIZENS POLICE ACADEMY is expected to start In September. Applications can be found on the Police Department website.

CODE RED SYSTEM: Check to see if your information is correct for our reverse calling system, Code Red. This system is utilized in emergency situations as well as for occasional general information. Go to the Burrillville website at www.burrillville.org and you will find the Code Red link under the “Residents” tab on the top of the page. The instructions are easy to follow. There is also a link to Code Red under the “Sign Up” tab on our Facebook Page.

B-SAFE PROGRAM: (BURRILLVILLE SECURITY & AWARENESS FOR THE ELDERLY) The objective of this program is to make the Police Department aware of elderly, handicapped, or medically fragile individuals who live in Town and may need some extra assistance. This form can be picked up at Burrillville Police headquarters any time, 24 hours a day, or printed from the “downloadable forms” section of our website: www.burrillville.org/police.

NOTARY SERVICE is available at the police department 24 hours a day for no charge.

VIN CHECKS are required for used vehicle purchases 2001 year or newer which have an out-of-state title, or when you are transferring a vehicle registration from another state.

- 10 – 10:30 am and 1 – 1:30 pm – 7 days a week
- Bring vehicle, original title and \$10 cash or check

RECORD CHECKS & FINGERPRINTS: If you need a national record check with fingerprints, call this department at 568-6255 for more information and to make an appointment with a detective. Note that fingerprints being done for school department employees (including sub-contractors of the school department such as bus drivers/monitors and cafeteria workers); Department of Health licensing, and certain other categories cost \$30. If you need only a Rhode Island BCI check, simply drop off the completed BCI check request to the dispatch area any time. There is no charge for BCI check only. Also, please note that NO record checks of any kind are done for juveniles.

ALARM ORDINANCE: Don't forget to register your house alarm with the police department. You can download an alarm registration form from the website or pick one up at the police station any time.

WINTER PARKING BAN: A reminder that Burrillville Town Ordinance 6-1.3 states, "no motor vehicles are permitted to park on any street within the Town of



Burrillville between the hours of 1:00 a.m. and 6:00 a.m. from November 1 through March 31 inclusive." The fine for parking on the streets during these hours is \$15 for each offense. Fines not paid within 7 days will double. Appearance at the Burrillville Municipal Court will be required for those not paying fines, or those

wishing to contest a ticket. Any court appearance which does not end in a dismissal will have court costs of \$50 assessed.

MURPH PROGRAM: The Burrillville Police Department created the Murph Program as a means of registering special needs residents of all ages into the Police Department database. This voluntary program allows loved ones to register the special needs individual by filling out a questionnaire designed to assist the Police Department by identifying the individual's needs—social, emotional, and physical—when it comes to understanding and interacting with members of law enforcement. Call the Police Department for more information on this program that is dedicated to identifying and protecting our community's most vulnerable residents.



FOR QUESTIONS ON THESE OR ANY OTHER PROGRAMS AND SERVICES OFFERED BY THE BURRILLVILLE POLICE DEPARTMENT, DON'T HESITATE TO CALL 401-568-6255 OR CHECK THE WEBSITE AT WWW.BURRILLVILLE.ORG/POLICE

Burrillville Emergency Management Agency (EMA)

Glen Biddiscombe, Director

(401) 641-0898

gbiddiscombe@burrillville.org

Preparedness: We cannot predict when disasters or emergencies will strike, but we can work to make sure that all residents of Burrillville are prepared. Ideally, everyone should be prepared and have emergency resources available in the event of a disaster. Being prepared may sound like an overwhelming task, but it doesn't have to be. Follow three steps to get started: Make a Kit, Make a Plan, and Stay Informed.

Make A Kit: A disaster-supply kit should provide a collection of basic items that household members may need in the event of a disaster. A disaster-supply kit can be used in your home if there is an extended power outage or it could be used if you have to leave your home and go to a shelter. During an emergency, you will probably not have time to shop or search for the items you need.

Start getting your kit together today! It is recommended that citizens have enough supplies to sustain themselves for a period of 3 days. A complete checklist is available via the FEMA web site at Ready.gov.

Once you have gathered all of your disaster kit supplies, it is important to store them properly so they are safe to use when you need them. Here are some tips to help keep your supplies safe and ready to use:

- Keep canned foods in a cool, dry place. Discard any canned good that becomes swollen, dented or corroded.
- Keep boxed foods in tightly-sealed plastic or metal containers. This protects the boxed food from pests and extends its shelf life.
- Change stored food and water supplies every six months. Write the date that you store items on the containers.
- Twice a year, check your disaster kit and make sure all items are in good working order. At the same time, check to see if there are any new items that need to be added to the disaster kit.
- Put all of your supplies in one or two easy to carry containers like a backpack, duffel bag, or a suitcase with wheels.
- Consider making disaster kits for work and for the car.

Make A Plan: Emergency plans can help to make sure you keep in contact with important family and friends.

- Create and practice a family communications plan in case you are separated during an emergency. Ensure that all family members have a copy of the plan.
- Select a family meeting spot where everyone can go in case you are separated.
- Make sure all family members have an emergency contact list. The contact list should include a friend or family member that lives out of state as it may be easier to make a non-local call after an emergency.
- Learn where your city or town's shelter is located and how to get there.

Stay Informed: Reliable, accurate information is an essential resource before, during, and after an emergency or disaster. Monitor media outlets, enroll in the code red messaging system (data below) and follow instructions provided by emergency services.

Social Media: Residents are encouraged to follow us on Twitter (@EMABurrillville) and also to check our Facebook page where notifications and important information will be posted when situations require.

Code Red Telephone Notification System: To ensure that your phone number is included on the call down list, or if you would like to add a cell phone number, please visit www.burrillville.org for further information. This system provides an excellent opportunity for residents to receive important information.

Rhode Island Special Needs Emergency Registry: I would like to take the opportunity to invite anyone within the Burrillville community with special needs to register on the RI Special Needs Registry at www.health.ri.gov/emregistry. This secure system allows us to keep track of those who require specialized attention during an emergency. Please sign up today or help out a family member, neighbor or friend.

Any individual, regardless of age, who has a chronic condition, disability, special healthcare need, or may require additional assistance during a time of emergency. Some examples include people who:

- Use life support systems such as oxygen, respirator, ventilator, dialysis, pace-maker, or are insulin dependent;
- Have mobility disabilities and use a wheelchair, scooter, walker, cane, or other mobility device;
- Are visually impaired, blind, hard of hearing, or deaf;
- Have speech, cognitive, developmental or mental health disabilities;
- Use assistive animals or a prosthesis.

Applications are also available by contacting BEMA at (401) 641-0898.

EMA Office & Emergency Operations Center: The Burrillville Emergency Management office is located within the Wallace Lees Public Safety Complex. When extended emergency conditions exist, the municipal court / community room is transformed to an Emergency Operation Center (EOC) where all management duties including communications, logistics, and documentation are performed. The EOC is also utilized for pre-incident planning involving representatives of all town departments. The center has been activated several times during the current state of emergency that exists as a result of the Covid-19 pandemic. All public safety agencies were involved in the planning process that continues to evolve.

Interested in learning more about Emergency Management? Burrillville has an experienced staff of volunteers who respond regularly when called upon to assist during emergency situations. If interested in becoming part of our team, please contact me at any time at 401-641-0898. Please check the EMA page on the Town web site for future messages regarding training opportunities. These trainings are for veteran members of our staff along with those new to the agency.

I thank all our volunteers, veterans and rookies alike for your tireless efforts during emergency situations and during Emergency Management activities for the Town of Burrillville, and remind everyone, "Preparedness begins at home." Visit our page on the Town of Burrillville web site: <https://www.burrillville.org/emergency-management>.

Burrillville Addiction Assistance Program

Brandy Bates, Coordinator

Wallace F. Lees Public Safety Complex

1477 Victory Highway, Oakland, RI 02858

Call or Text: 401-640-8138 Email: bbates@burrillville.org

The Burrillville Addiction Assistance Program, developed in 2018, is an innovative program dedicated to serving the residents of Burrillville who may suffer from, or have family members suffering from, alcohol or drug addiction. The Town of Burrillville, in conjunction with the Burrillville Police Department, will assist those seeking to address their addiction with locating treatment resources, planning for recovery and finding a new path in life.



For confidential information, contact us using the contact information above. You can also contact us on our Town website at www.burrillville.org, on our Facebook page: [@hangonpainends](https://www.facebook.com/hangonpainends), or through our website at www.burrillvilleaddictionassistance.com.

Burrillville Prevention Action Coalition

Monica A. Blanchette, Coalition Coordinator

Wallace F. Lees Public Safety Complex

1477 Victory Highway, Oakland, RI

401-710-7996 mblanchette@burrillville.org

The Burrillville Prevention Action Coalition (BPAC) is a volunteer working task force comprised of individuals who are interested in substance abuse prevention issues in the Burrillville communities. Current coalition members comprise of school, prevention and treatment professionals, youth, parents, law enforcements, fire and rescue personnel, faith community, health care, youth organizations, business owners, media, and local government. All members live and/or work in Burrillville.



BPAC meetings take place monthly. Youth (ages 12-18) coalition meetings take place weekly on Sunday evenings at 6:00 pm. If you are interested in volunteering or want more information, please contact Monica as listed above.

You can also follow BPAC's events and initiatives on Facebook and Instagram [@BurrillvillePAC](https://www.instagram.com/BurrillvillePAC) or on the webpage at www.burrillvilleprevention.org.

Animal Control Shelter

Kerry Courtemanche, Officer

131 Clear River Drive, Oakland, RI 02858

401-568-9480 Fax: 401-568-9471

aco@burrillville.org

Monday - Saturday 7:00 am - 3:00 pm

Sunday & Holidays: 8:00 am - 12:00 pm

With fall upon us, the holidays will approach quickly. Please remember that pets are rarely a good gift idea. If you are considering giving a pet as a gift, make sure



that the person receiving it truly wants a pet and is capable of caring for it physically and financially. Pets require a commitment of time and money, and many end up in shelters because unprepared owners are unable to take proper care of them. Consider purchasing the pet supplies needed with the promise of a pet after the holidays. This ensures that obtaining a pet is not on

impulse and gives the receiver adequate time to consider the best type of pet and what care it will require. Arriving in a new home during the holidays can be extra stressful on a pet with all the excess company, or absences, and noise. Not to mention the additional hazards such as tinsel, ornament hooks, glass decorations, etc. For parents giving a pet as a gift to a child – remember that no matter what promises your child may make regarding taking care of a pet, the responsibility for ensuring the pet is properly cared for will be yours. After the novelty wears off, you are the ones left with the care of the pet while your child(ren) become interested in other things. Please make sure you are ready for that commitment before giving your child a pet.

When adopting a dog, please do your research. Be extra careful when adopting a dog that originates from out of state. Private rescues importing dogs from out of state are required to be licensed with RI DEM Division of Agriculture – Animal Health. There are specific health guidelines that must be followed in order to bring dogs into RI. These policies are in place to protect you, as the adopter, and pets that are already living here in the state. There have been numerous cases of illness documented in dogs brought in from the south, most often in scenarios where they have been imported by unlicensed parties that have not met the required health requirements. Please educate yourself and make sure you are adopting from a reputable group licensed to operate in RI.

We would like to remind everyone to check their pets' vaccinations. Rabies vaccines are required for all dogs, cats, and ferrets. Although Rabies is the only legally required vaccine, other vaccines are important too. There continues to be an increase in canine parvo activity in Rhode Island and all over New England. This is a highly contagious virus which is easily transmitted. It is prevented by vaccinating, but is extremely costly to treat and can be fatal to your dog.

Reminders: There is a leash law in effect for dogs. All dogs must be leashed when off the property of the owner. All dogs must be licensed. Licenses can be obtained at Town Hall with proof of a current Rabies certificate. We have recently seen an increase in the number of dog bites "at large". Please be a responsible dog owner and make sure that your dog is properly confined for public safety. There is also a

dog waste ordinance in effect. Failure to remove dog waste is an environmental and human health hazard. Dog waste can transmit disease that is communicable to other animals as well as humans, and can contaminate out water ways. It is also very unsightly and smelly when people are trying to enjoy an outdoor space where people frequently walk dogs. We ask that everyone please make the effort to be responsible and clean up after your pet. It is the right thing to do, and an obligation of being a pet owner. Burrillville has a limit of three dogs per single-family residence, and two dogs per apartment/condo/multi-unit. Excess dogs require a kennel license be obtained via the Zoning Board and Town Council.

A note about bird feeders. They attract beautiful birds that many people enjoy watching and photographing as a hobby. But they also have a nuisance

side. Feeders not only attract birds, they attract mice and other small rodents, such as rats, chipmunks, and squirrels as well as animals such as skunks and raccoons, all of which carry fleas and ticks. The white mouse plays a big role in the spread of Lyme Disease and is an expert at invading homes, where it rapidly reproduces. The attraction of small rodents and animals is also often followed by the larger mammals that prey on them. An excess of bird feeders and the excessive birds attracted to them can cause a whole host of potential problems. Bird feces can contaminate human food and water sources, fecal dust can be inhaled into the lungs, direct contact with bird feces to a wound can result in infection, and they also harbor fleas, ticks, mites, and other parasites. Birds can carry several hundred different viral and bacterial agents. Birds can also be quite destructive to human property, causing corrosion with the buildup up bird waste. The intent of this article is to educate and ask that people be reasonable and responsible in their feeding of birds. Limiting the number of bird feeders on your property will aid in controlling the number of birds nesting in the area of your home and those that surround it. When large amounts of birds are attracted to one small area, the feeding party may enjoy watching the birds, but the consequences of the high population can cause a nuisance to your neighbors as well as a health hazard to all of you. We ask that everyone please consider limiting the number of feeders on your property and being considerate of neighbors that do not have feeders and may be affected by all of the nuisances that can accompany a large number of birds. We thank you for your consideration.



As we continue our efforts to control the stray and feral cat population, please remember that all cats are required to be spayed/neutered by the age of six months so that they are not able to contribute to the population of unwanted pets. Luckily, there are low-cost options available. Burrillville Animal Control continues to host low cost spay/neuter clinics for cats on a monthly basis. Services are provided by Dr. Ryan Loiselle of Salmon River Veterinary in their mobile surgery unit, and clinics are held on the Shelter premises. These clinics are for cats only, and the cost is



\$100 which includes the spay/neuter surgery as well as Rabies and FVRCP vaccines. Registration is made by contacting Salmon River Vet at 401-793-0092, or you may visit their website at www.rimobilevet.com. Low cost spay/neuter services are also available through Potter League's Community Spay/Neuter clinic. This clinic provides discounted spay/neuter services for dogs and cats, with extra discounts for feral cats and pit bulls. For more information, you can reach them at 401-369-7297, or visit their website at www.oceanstateanimalcoalition.org.

Important safety tips:

- Do not approach stray animals. Please love your own, leave others alone.
- Avoid all contact with wildlife. Rabies continues to be a serious issue in the local wildlife population. Report any sick wildlife to DEM or Animal Control. All human and domestic animal contacts with wildlife should be reported.
- Do not feed pets outside, and please do not feed wildlife.
- Place identification tags on your pets' collars so they can be returned to you if lost.
- Make sure that your pets are properly secured and have plenty of fresh water available at all times.
- Many plants and foods are toxic to animals. You can find plenty of information regarding potential hazards of plants, foods, medications, etc. at <http://www.asPCA.org/pet-care/poison-control/>.
- Be aware of spills of auto antifreeze/coolant. It is deadly to pets.
- In cold weather, bang on your hood before starting your vehicle. A cat or other small critter may have climbed in for a warm place to sleep.
- Contact our office at 568-9480 with questions, concerns, and animal-related complaints.

Have you liked our Facebook page yet? Please "like" and share our page to help build our membership. We will be posting news, educational material, lost/found pets, links to adoptable pets, donation requests, and fundraising info on our page. You can find us at <https://www.facebook.com/BurrillvilleAnimalControl>.

Animal Control continues to see a disturbing number of intentionally abandoned animals, some in horrific condition, and they need our help. We are proud to work

ADOPT A SHELTER ANIMAL TODAY!



in a community of such generous and caring supporters, and thank you all for your contributions. Working at Animal Control can be stressful and hard on the heart at times, but our reward is seeing debilitated animals recover, and placing as many pets as possible in happy and loving homes. We see a lot of sadness and irresponsibility, and along the way we meet wonderful people who want to help and adopt. It is these people who restore our faith and keep us working hard for the animals. Product donations are gladly accepted. Please call to see what items we need most. The Shelter will continue to be in need of ongoing cash donations to cover veterinary expenses. These donations are used solely for veterinary expenses so that we may ensure the best outcome for animals in our care, and healthy pets to those who adopt. Anyone wishing to donate can do so in person at the Shelter, or by mail to: Burrillville Animal Control, 105 Harrisville Main Street, Harrisville, RI 02830. There is also a PayPal link available on our Town website page.

To see our pets available for adoption, go to:

<https://www.facebook.com/BurrillvilleAnimalControl>

Volunteers are welcome at the Shelter to assist with cleaning and feeding and care of the animals as well as other indoor and outdoor projects. If you are interested in volunteering, please contact the Shelter at 401-568-9480 for more information.

How to Access Information About Our Schools

For daily photos and information about what's happening in our schools, check out our Facebook Page—you can search for us **@BurrillvillePublicSchools**

For general information about our schools, please visit the Burrillville School Department website at www.bsd-ri.net. Below are just a few of the items you will find on our district website:

- ◆ **School calendars (including dates for vacations, report cards & progress reports)**
- ◆ **School Closing Information**
- ◆ **Information about Special Events**
- ◆ **School Committee Policies**
- ◆ **District Curriculum**
- ◆ **Lunch Menus**

From our Home Page you can also connect to individual school websites.

Career and Technical Education Pathways at BHS

Have you heard about the amazing **Career and Technical Education Pathways** available to students at Burrillville High School? A **CTE pathway** is a sequence of



three or more specialized courses within a student's area of career interest. Pathways are designed to connect high school classes to college, industry certifications, and/or a career. Our pathway programs include opportunities for students to participate in industry-based projects and internships. Many result in industry-specific certifications that students can take with them when they graduate. The Burrillville School Department recognizes that there are many different ways for students to achieve an education

that prepares them for life beyond high school, and we are striving to provide a learning environment that allows all of our students to reach their individual goals.

Burrillville High School proudly offers **TEN** different career and technical pathways to our students. Our Environmental Science, Project Lead the Way Engineering, Project Lead the Way Biomedical Science, Construction Management, Education, Graphic Communications and Law and Public Safety programs are endorsed by the RI Department of Education. Three additional locally approved pathways are Computer Science, Business and Finance, and Biotechnology.

For more information about our CTE Pathways, please contact **Mrs. Julie Mayhew** at 568-1301 x1115 or by email at mayhewj@bsd-ri.net. Informational videos about our CTE programs, along with applications, can be accessed at our CTE website, <https://bhs.bsd-ri.net/cte-pathways>.

Student Registration

Are you new to our community? Registration for school is ongoing throughout the year, by appointment. If you would like to register your child, you can start the process by calling the Central Office at 568-1301 to speak with Karie Hebert.

Registrations forms may be downloaded and printed or filled out online at <https://www.bsd-ri.net/parents-students/student-registration>.

Parents and guardians can also access paper copies of the forms at the Central Office at any time.

It's Cool to be Kind

As we begin a year of what we hope will be a very normal and stable school experience for our students, we continue to reflect on the impacts of the pandemic and how we can best give our students what they need to recover. Often we hear talk about the academic and mental health impacts of quarantine and isolation, but less is said about the impact on students' ability to navigate in-person interactions and relationships. We started to see that impact with the widespread availability of smart phones and social media, but it has been exacerbated by the conditions of the pandemic. Just like in every other school district around the country, our Burrillville students are facing the challenge of learning all over again how to interact with each other, make friends, resolve differences, and be kind.

Burrillville has been a PBIS district for years—meaning that all our schools explicitly teach behavior expectations every year, reinforce positive behaviors, and ensure that consequences for unacceptable behaviors are meaningful and geared toward change. For the most part, our BSD students have known that we expect them to treat each other well and they have risen to those expectations. They have learned that positive behavior isn't just about saying nice things to each other. It's about their actions every day - holding doors open, greeting one another, picking things up off the floor, including others, taking turns, offering help, and respecting each other's property - these are the foundations of character and integrity, values that our school community holds dear. In the past year, though, we have seen too many instances where our students are making choices that prevent them from being their best selves.

This year, our schools are all embracing the philosophy of the Great Kindness Challenge: empowering students to create a culture of kindness. The message in all our schools, consistently embraced by students and staff, is that kindness is important all the time. We will highlight that message through special events and activities throughout the year, but we will live it every day. We hope that families will join us in partnership as we bring back a culture of kindness to our schools—talk with your children about what it means to be kind, participate in activities as they come up during the year, stay in contact with your child's teachers, and, if you are able, join a school improvement team so that you can be a part of positive change now and in years to come.

We live in a world that is not always kind, and we are unfortunately exposed every day to examples of ways in which human beings treat one another poorly. In all our schools, we are doing all we can to help our students grow in the knowledge that the way they treat others has a lasting impact, and that kindness is one of the greatest virtues of a civil society. We are working every day to live up to the immortal words of Mahatma Gandhi, to "be the change [we] wish to see in the world."

Burrillville Extended Care
Kelly E Cournoyer, Director
P.O. Box 351, Harrisville RI 02830
Telephone 568-1356 Ext. 2
kcournoyer@burrillville.org

"You're off to great places! Today is your day! Your mountain is waiting, so get on your way!"
- Dr. Seuss



Burrillville Extended Care a well-established child care program right in your own Community!

BEC originally began in 1996 under Just for Kids daycare in order to develop a before/after school program to meet the growing needs of the Town of Burrillville. In August of 1997, the Burrillville School Committee decided to lend their support to a new program, that quickly flourished into what we know today as Burrillville Extended Care. The School Committee discovered that quality educational programs and child care was difficult to find for the working families of the Town. This struggle was the catalyst that drove the Burrillville Parks and Recreation Department to put all of their time, faith, heart and soul into developing Burrillville Extended Care.

After countless hours of hard work, advertising, registering and a lot of convincing, the School Department along with the Town's Recreation Department opened the first B.E.C. Center at the Steere Farm Elementary School.

In September of 1999, the Program had grown so much that a second site was added at the W.L. Callahan School. Then in January of 2006, it became official! B.E.C. was made into its own Department under the Town of Burrillville.

****B.E.C. is HIRING!****

If you love working with children and you are interested, please logon to:
<https://www.burrillville.org/burrillville-extended-care-program/files/employment-application>

*The BEC Program is adhering to and following all recommended CDC guidelines as well as aligning our program to meet the standards set by RI DHS and the RI DOH. We are also following **ALL** school guidelines as well. Thank you for your understanding.

The B.E.C. Program accepts children entering grades Kindergarten thru Seventh grade and have not reached the max age of 13. This age requirement is due to our licensing through RI DHS.

Steere Farm Site
915 Steere Farm Rd.
Pascoag, RI 02859
(401) 568-1356

Callahan School Site
75 Callahan School St.
Harrisville, RI 02830
(401) 568-1354

A.T. Levy Site
135 Harrisville Main St.
Harrisville, RI 02830
(401) 568-1356

Information and Registration Forms are available on the Town website: <http://www.burrillville.org/burrillville-extended-care-program> or by calling the main office at 568-1356 x.1 to register. Be sure to "Like" our Facebook page for the latest news and updates!

Visit our website for the latest news and updates: <http://www.burrillville.org/burrillville-extended-care-program>.



Jesse M. Smith Memorial Library

Beth Ullucci, Director

100 Tinkham Lane, Harrisville, RI 02830

(401) 710-7800 Fax: (401) 710-7772

www.jmslibrary.org or visit us on Facebook and Instagram

Hours: Monday – Thursday 9:00 am – 8:00 pm

Friday 10:00 am – 4:00 pm

The library is more than just books and computers. It is the cornerstone of the community, offering all a place to gather, explore, interact, and imagine! We offer a wide variety of programming and materials for patrons of all ages. You can find story times, adult crafts and programs, special teen events, books, DVDs, computers, wireless printing, e-Books, and a whole lot more every time you visit. Come check out all we have to offer at our beautiful



building by the river!

Summer Wrap-Up - We enjoyed the bustle of summer, but as always, it went by too fast. The Children's staff kicked off summer with Kona Ice and oversized games at the pavilion. Camp themed activities were enjoyed by all throughout the summer as part of the 2022 summer reading theme *Read Beyond the Beaten Path*. Kids made s'mores, participated in camping dramatic play, mined for rocks and gems, attended a raptor encounter and cooled off with a Riverwalk Waterpark! Teens participated in Volunteers for community service, exploded watermelons, played candy BINGO, trivia contests and a summer gaming Hangout. Adults participated in a variety of programs including playing washers, built birdhouses, crafted beach themed candle holders and summer themed trivia. In July we held our first ever Bigfoot Day with a variety of activities for all ages. The Summer Finale was attended by nearly 250 people who enjoyed a special concert performed by street percussionists, the RI Bucket Drummers.



Thousands attended the **2022 Jesse Smith Library Riverwalk Times Concert Series** sponsored in part by the Friends of the Library. Performances went on every Saturday night for 7 weeks on Saturday evenings from 6 – 8 pm. This year's lineup included Brass Attack, The Aviators, All About Amy, The Kelley Lennon Band, Whiskey Rhode, Live Music Band and The Jesse Liam Band.



Friends of the Library - It is thanks to the Friends of the Jesse Smith Library that we were able to hold many of our amazing programs including our summer reading programs, Halloween events and the Riverwalk Times Concert Series. The

Friends raise funds through book sales, vendor fairs, silent auctions and donations. They are always looking for new members. The Friends meet on the first Tuesday of each month at 6:30 pm.

The Children's Department offers a variety of fun and educational programs for children of all ages from birth to grade 5 every day from Monday through Saturday. Programs include toddler, pre-school and pajama story times; ongoing programs (LEGO Club, Literacy Tails and Craft Corner). Special events include Santa at Stillwater, life-sized Candy Land, Trick or Treat in the Library and many more.



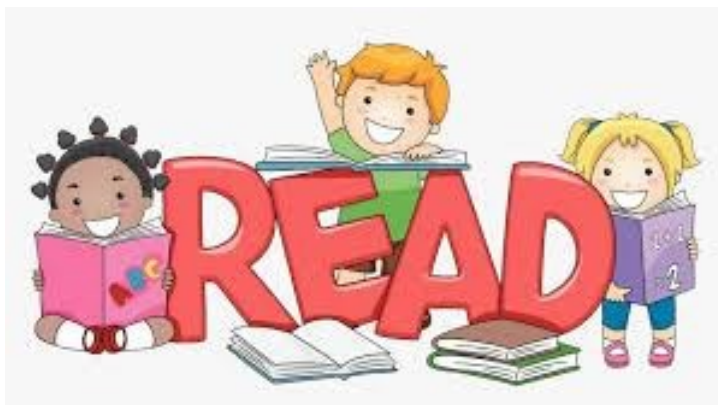
The Teen Department offers programming and resources for teens in grades 6 through 12. Teens can once again flock to the library in search of fun and a safe place to hang out. Our **Teen Hangout** in the Community Room after school provides teens in grades 6 through 12 with food, games, crafts and a place to relax after school. We offer:



- Video games on the Nintendo Switch and Wii
- Computers are available for homework and fun
- Special events – after hours events, fun with food programs, video game tournaments
- Special events all summer long as part of Summer Reading – read, attend fun programs and win prizes



Adults have many reasons to visit the library too! Not only can we help you discover great books, DVDs and other materials, but so much more. We offer adult programs – crafts, informational speakers and special events (ex. Escape Rooms, Haunted Library); Knitting & Crochet Group; technology assistance (computer classes, one-on-one help sessions, and drop-in internet support) and databases (Ancestry Library Edition, Providence Journal and AskRI.org).



Did you know we offer:

- A new Library of Things offering fun outdoor items that you can borrow with your library card (hiking poles, binoculars, various outdoor games and a metal detector)
- Circulating special items, including appliance voltage meters, fishing poles/tackle boxes, and sit/stand rolling walkers
- Downloadable eBooks and audiobooks through the Ocean State Libraries eZone
- Wireless/remote printing from home or your mobile device from within the library. (Use the link on our website)
- Fax services and document scanning to email

Be on the lookout for some spectacular events in the coming months!

- A Star Gazer party with Skyscrapers from the RI Astronomical Society
- Trick or Treat in the Library
- Glow in the Dark Halloween Mini Golf
- A visit from the Snow Sisters for wintery fun in November
- Look for special events in 2023 as we celebrate 15 years at the Tinkham Lane location

Find out what is happening at the Library!

- Facebook and Instagram
- Monthly Newsletter
- Library's Website <http://www.jmslibrary.org>



Burrillville Wastewater Facility/Sewer Commission

Michael Emond, Superintendent
141 Clear River Drive, Oakland, RI 02858
PO Box 71, Harrisville, RI 02830
Phone: 401-568-6296
Fax: 401-568-9464

Hours: Mon. - Thurs. 8:30 am to 4:00 pm, Fri. 7:30 am to 3:00 pm

The Board of Sewer Commission is comprised of five (5) members. The members are currently William Andrews - Chairman, Richard Nolan - Vice Chairman, Russell Fontaine - Secretary, Gary Rouleau and Dan Joubert - Commission Members. The Commission holds meetings on the second Tuesday of each month at 6:30 p.m. in the Board Room of the Wastewater Treatment Facility. If you would like an item placed on the agenda, the request must be received at this office by the first Tuesday of the month no later than 2:00 p.m.

Sewer Use Charges: The sewer use rate for FY23 is \$614.80 a year for a single family dwelling. At the present time, residential sewer use charges are mailed once a year in October and can be made in quarterly payments. Please note that failure to receive a bill does not negate the requirement to pay the bills when they are due.

Sewer Assessment Charges: Sewer Assessment bills are mailed out once a year in the month of July. Homeowners can choose to pay the sewer assessment in a lump sum or over a 20 year period. If you choose the 20 year payment plan, you can, at any time, make additional payments to the assessment or pay in full. Should you sell or transfer your property, the sewer assessment is not transferrable to the new owner. Any assessment balance must be paid in full at the time of the sale.

Payment: Check payments should be mailed to: **PO Box 71, Harrisville RI 02830**. Alternately, there is drop box located to the right of the front door of the Wastewater Treatment Facility, which is accessible at the above hours. Customers may also use the drop box at Town Hall, which is accessible 24/7. Please label your envelope "Sewer Payment." Checks only – No Cash. Please leave your email or a note if you would like a receipt.

You may also pay your bill online at www.RleGov.com. You will need your account number and pin number, which are located on the upper left hand corner of your bill. Please note that the online payment company charges a 3% fee to use this service.

If you are having financial difficulties, please contact this office as soon as possible so that we can set up payment arrangements.

This office does accept postmarks for payments, however payments with no postmarks (such as payments left in the drop box at Town Hall) will be processed on the actual day they are received by this office.

Cash payments will be accepted at the office but are not encouraged. Rules, restrictions and directions for the general public to enter the building can be found on the Town's website: www.burrillville.org/wastewater-treatment-facility.



The Burrillville Lions' Club
P.O. Box 414, Harrisville, RI 02830
Phone: (401) 568-4141
www.e-clubhouse.org
"Where there's a need, there's a Lion"

Celebrating its 75th Anniversary in 2022, the Burrillville Lions Club is a volunteer, non-profit organization serving the residents of Burrillville and North Smithfield. Chartered in 1947, the Club meets the 1st and 3rd Wednesday of each month at 7:00 p.m. (social time at 6:30 p.m.), except July and August, at Uncle Ronnie's Red Tavern in Nasonville. Fund raisers are held to provide for charitable and community betterment activities including a since-founded tradition of sponsoring a learn-to-swim program at the Town beach, providing scholarships for resident high school seniors, supporting the Town's food banks, providing dictionaries to all 3rd grade students in both Towns, hosting camps for blind and handicapped children at the Town beach, supporting the RI Sight Foundation and Children with Cancer Fund, assisting families at the State's Ronald McDonald House, and many other endeavors. One hundred percent of all net proceeds are returned to the community.



Other services provided include: conducting eye screening for elementary school children; providing food and support for the Backpack Program; conducting Earth Day cleanups; assisting residents with eye care issues; and providing emergency assistance as appropriate.

The Burrillville Lions Club is part of Lions Clubs International, the largest service organization in the world. Membership is encouraged and volunteers are always needed and welcomed. If interested, please contact us at the above address, telephone, number, or email to: BurrillvilleLions1947@gmail.com.

Burrillville Historical and Preservation Society

16 Laurel Hill Avenue, Pascoag, RI 02859

Phone: (401) 568-8534

Website: www.bhps.org

Email: bmencucci@verizon.net

The Burrillville Historical & Preservation Society's mission is to preserve and protect Burrillville's history. The Society normally meets on the 4th Tuesday of each month at 7 p.m. at its headquarters, the Bridgeton School in Pascoag. This 1897 school-house serves as a repository for a collection of photos, documents, histories, scrap-books, cemetery information, clothing and artifacts. If you have old photos you'd like to share, we can scan them and return your originals.

Did you know that Burrillville has 130 historical cemeteries? We are always looking for volunteers to help us with cemetery cleanings. The work involves cutting brush, weed-whacking and raking leaves. We especially need volunteers that can weed-



Even if you can volunteer one hour of your time in a year, the help would be greatly appreciated. This is a great opportunity for high school students to get their community service hours for graduation. Contact us if you'd like information on our adopt-a-cemetery program.

"Burrillville Revisited", the new Images of America book is now available for purchase. This book contains more than 200 historical photos with captions of Burrillville on the following topics: Mills; Houses and Businesses; Farms; Influence of Austin T. Levy; Spring Lake; Hurricanes, Floods, Blizzards; Parades; Transportation; and Stories from the Grave. It was written by Betty Mencucci on behalf of the Historical Society. Contact the Society to purchase a copy or come to one of our special events.

We have a number of special events scheduled during the year including an Open House/Yard Sale on October 8th, Halloween Bazaar on October 15th and a Holiday Bazaar on November 12th and 19th.

Burrillville Land Trust

PO Box 506, Harrisville, RI 02830

Phone: (401) 447-1560 Email: info@burrillvillelandtrust.org

Over the past 10 years, the Burrillville Land Trust has done everything possible to save Sweet's Hill. The 150 acres at the top of East Avenue (Route 107) is all that remains of the over 1000 acres of Sweet's Farm. A farm that supplied much of the food for the region. The Burrillville Land Trust is an all volunteer, 501(c)(3) public charity, private land trust in Burrillville. Founded in 1999, the mission of the Burrillville Land Trust is to preserve and protect the rural character of the Town of Burrillville through education, acquisition and advocacy. We own 229 acres spread among 10 parcels of land and we hold two conservation easements totaling 36 acres. While we are not connected with Town government, we enjoy a good healthy relationship with many of the Town's organizations providing recreational hiking, bird watching, rain barrel workshops, American Chestnut tree giveaways, guest speakers and many events on the properties owned by the land trust. One of our properties, the Edward D. Vock Conservation Area, is the home of the first American Chestnut Tree Germ Plasm orchard in a natural setting in Rhode Island. All of our properties are managed by volunteers just like you who love the quiet, the fresh air and the rural character that makes this our home.

Today when our sense of place is in crisis, preserving our lands, increasing our protected forested lands for clean air and water, preventing clearcutting is more important than ever. That's why we took a leadership role in preventing a fracked gas fossil fuel power plant from being built in the northwest corner of Burrillville and why we are currently raising funds to preserve the iconic Sweet's Hill property in Harrisville.

Please visit our website, burrillvillelandtrust.org, or better yet, go take a hike on our Bobcat Loop Trail at The Edward D. Vock Conservation Area on Jackson School House Road in Pascoag. Our board meets via Zoom at 6:30pm on the second Monday of each month. Contact Paul A. Roselli at (401) 447-1560 for more information. We need you to help Save Sweet's Hill.

BLT TIP: Birds and bats thrive on lawns, trees and backyard bird feeders that are free from insecticides and other cancer causing chemicals.

Berard-Desjarlais American Legion Post 88

111 Chapel Street
Harrisville, RI 02830
www.legionpost88ri.org

The American Legion was chartered and incorporated by Congress in 1919 as a patriotic veterans organization devoted to mutual helpfulness. It is the nation's largest veteran's service organization, committed to mentoring youth and sponsorship of wholesome programs in our communities, advocating patriotism and honor, promoting strong national security, and continued devotion to our fellow service members and veteran's needs.

The Post supports many community programs and provides a meeting place for Burrillville organizations. Linda Peck, Town and Post Service Officer, is the Veterans Representative. Office hours are held on the third Wednesday of each month at 5:30 p.m. at Post 88. For any emergencies, please contact Linda Peck at 401-568-8491 or by email: lindapecck795@gmail.com.

Ray Trinke has taken over the duties of Building Coordinator. He will maintain the schedule at the Binns Building and can be reached at 401-568-0858 or by e-mail at raytrank101@cox.net. Please contact Ray also for any Town organizations or party rental or if you would like to become a member of the post.

Support the Post 88 Flag Sale at the above link or buy from Lawrence Brothers Hardware across from Post 88 in Harrisville. We collect used clothing for the needy in the donation shed located outside our post home.



Pascoag Public Library

57 Church Street

Pascoag, RI 02859

Tel: 401-568-6226 Fax: 401-567-9372

<http://pascoaglibrary.org>

<http://facebook.com/PascoagLibrary>

Pascoag Public Library: *Your landmark library since 1871.*



REOPENING LIBRARIES:

Phase 3. PLEASE TAKE ADVANTAGE OF CONTACT-FREE SERVICES. You may call 401-568-6226 or email info@pascoaglibrary.org (link sends e-mail) or use [Library Takeout](#).

Our current hours are as follows:

- Mondays: 1-8
- Thursdays: 10-8
- Fridays: 10-3
- Saturdays: 9-1

Pascoag Library Information:

- ***No donations at this time. Please do not leave items outside due to the possibility of weather damage***
- Dropbox for returns is open
- PAS is scheduled for deliveries on Mondays & Thursdays
- Email available anytime: info@pascoaglibrary.org
- Call 401-568-6226 and leave a message
- Please visit www.AskRI.org for information about Beanstack which is available to all public libraries

Resources:

- Office of Library & Information Services (www.catalog.oslri.net)
- RIDOH COVID-19 Information (<https://covid.ri.gov/>)
- Town of Burrillville (www.burrillville.org)

HISTORY

The Pascoag Public Library is an integral part of the history of the Town of Burrillville. It was the first library in the Town, founded in 1871 by a women's group called the Pascoag Union Sewing Society. In 1873, they renamed themselves the Ladies Pascoag Library Association, appointed a librarian, and purchased 163 books, which were housed in the librarian's local store.

The Library moved four times between 1883 and 1899 when Samuel Mellor offered the use of a room rent free over his mill office on Sayles Avenue where it remained until 1913 when it moved to the Steere Building on Main Street. At this time, charges associated with the loan of books were discontinued and the library became known as the Pascoag Free Public Library.

A bequest of \$500 from Miss Rosamond A. Steere stipulated that the money be used for a free public library building within ten years. This started the building fund, which grew through numerous fundraisers and donations. The library's current home at 57 Church Street was erected in 1924. By 2010, it was clear that the library needed room to grow. With grants from the Champlin Foundation and the Levy Foundation, the library added a 36x22 foot addition, nearly doubling its size. Construction was completed in June 2011, at the 140th anniversary of the library's founding.

The Library is privately owned by the Ladies Pascoag Library Association and governed by the Board of Trustees, which is still composed of all women.



SCOUTING BSA

SCOUTING IN BURRILLVILLE

Cub Scouts is a program for kindergartners through fifth graders of both boys and girls. Scouts BSA teaches while having fun, focusing on character development, teaching practical skills and enhancing their community spirit. Cub Scouts are made up of Den's (groups of Scouts) for each grade. They meet once a week during the school year and then get together for a Pack meeting to show what they have learned and receive their awards. There are two Cub Scout packs in Town that meet on different evenings.

For more information about Pack 1 Pascoag, please contact Florence Stevens at 401-692-6716, or by email at newtfla@gmail.com. For Pack 102 Mapleville, please contact Dan Esposito at espodan512@aol.com.

Boy Scouts begin in fifth grade and can stay in until they are 18 years old. We are a Boy only Troop but girls can also join this program, now called Scouts BSA, and we can direct you to a program for girls. Every day Scouts are encouraged to live by the 13 points of the Scout Law by being trustworthy, loyal, etc. They are taught skills of the world around them by earning merit badges. Boy Scouts are grouped by rank, not by grade with the highest rank being Eagle Scout. The Troops are separated into groups of similar ranks and skills, called Patrols. All the Scouts meet once a week and have a "Court of Honor" 3 times a year where they are recognized and are presented their awards. There are 2 Troops in town.

For more information about Troop 1 Pascoag, please contact Newton Stevens at 401-568-0395 or newtfla@gmail.com.

For more information about Troop 102 Mapleville, please contact Dan Esposito at espodan512@aol.com.



The Burrillville Conservation Commission

Ron P. Lapierre, Chairman

Email: rplapierre@aol.com

The Burrillville Conservation Commission's mission is to protect and preserve the natural tranquility of the local natural reserves, features and attributes that defines the Town of Burrillville's natural characteristics which draws people to this community to enjoy the rural atmosphere, scenic vistas, recreational opportunities, and many qualities of life. The Conservation Commission is responsible for the establishment of a seven-member party that serves as an appointed board reporting directly to the Town Council, Planning Board, Zoning Board, and the many municipal employees that constitute the Town's government. Some of the wonderful areas the Conservation Commission manages are as follows:

1. Joseph O. Brock, Blanchard—Nipmuc Trail, located off of Round Top Road, 1/4 mile north of Smith Road. Trail is for public walking, hiking and fishing on 200+ acres of land along the Nipmuc River. A Carry In/Carry Out policy is in effect as well as a request to "Pick-up after your dog". During the period of 1 November and 31 December, hiking/walking is strictly forbidden as this conservation area is used exclusively for hunting by permit.
2. Wallum Lake Canoe Launch, located off South Shore Road on scenic Wallum Lake. Site is strictly for canoeing, kayaking and fishing. Swimming is prohibited..
3. The "Welcome to Burrillville" sign on the North Smithfield/Burrillville line is maintained by the BCC as an Adopt-A-Spot location and have a policy of NO SIGNS of any type permitted in this area.



The Burrillville Farmers Market

Stillwater Mill Center

75 Tinkham Lane

Harrisville, RI 02830

Deb Yablonski, Market Manager: 401-568-3191

Tammy D'Amato, Assistant Manager: 401-567-9393

burrillvillefma@gmail.com

Mailing address: P.O. Box 215, Pascoag, RI 02859

Saturdays, 9:30 am to 12:30 pm, June 5th - September 25th

The Burrillville Farmers Market Association is a nonprofit organization whose mission is to promote and market the products of local farms and artisans in our beautiful, rural community and surrounding areas. We hope you will continue to support us next year, as we strive to bring a diverse shopping experience, while reducing our carbon footprint and to encourage a more sustainable and stronger local food system.

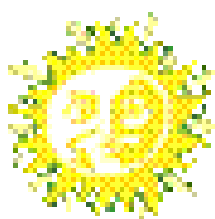
Thanks to some wonderful local farmers, artisans, musicians and our supportive community, we had a great 2022 season. It was so wonderful to see everyone and to be able to bring good, locally produced products and live music to our community. The chickens kept laying eggs, the seeds grew, our farmers worked the soil, and were more determined than ever to harvest beautiful food for our community. We are already making plans for a bigger and more diverse market next year! We appreciate your continued support.



We are very happy to continue our Double Bonus Buck Program. Thanks to a USDA grant and Farm Fresh RI, our locally grown, nutritious food is accessible to all! 100% Bonus Bucks to shoppers using federal SNAP (Supplemental Nutrition Assistance Program). For every dollar you spend with EBT, you get a FREE dollar in Bonus Bucks to spend on fresh fruits and vegetables at the Farmers Market.

Please help us reduce pollution caused by plastic bags by continuing to use reusable bags. The Market accepts: cash, credit/debit, SNAP/EBT, and WIC Fruit and Vegetable checks.

Thanks to the Town of Burrillville and the June Rockwell Levy Foundation for their continuing support. Thanks to Burrillville DPW and Burrillville Parks and Recreation for all their help and unending Pavilion repairs. And to all our vendors, volunteers, musicians, and customers who keep us growing!



Burrillville

Farmers' Market

The Autism Project

1516 Atwood Avenue

Johnston, RI 02919

401-785-2666

www.theautismproject.org

As the saying goes, “Knowledge is power.” Access to high-quality information enables us to become better parents, teachers, advocates, and sources of support to our children.



The Autism Project has been a collaboration of parents, professionals, and community members dedicated to providing high-quality and accessible support, training, and programming since 1997. We started out with a focus on children and youth with Autism Spectrum Disorder (ASD), and a goal of increasing the support and education available for individuals with ASD, their parents, and their

communities.

With that goal in mind, The Autism Project offers the following for the residents of Burrillville:

- Family navigation and support for parents, caregivers, and family members with developmental concerns or who care for children and youth with an ASD diagnosis. We can provide this via phone, in Burrillville libraries and other central community locations, in-person meetings at our Johnston office. We offer navigation in English or Spanish.
- Training series for parents and professionals.
- A binder of resources at the Burrillville library.
- Year-round social groups and a summer camp for children and youth with ASD and related communication disorders.
- On-site consulting for educators, schools, and organizations.
- National Speaker Conference for Rhode Island parents, professionals, and community members each spring.

We've also learned over the years that many of the supports, programs, and strategies that work well for children with ASD can also benefit all children – especially those with social-emotional, regulation, or communication challenges. Today, The Autism Project considers itself a “hub of hope”: We connect people with a spectrum of needs to the education and resources that support meaningful, purposeful lives.

For more information about The Autism Project and the services and programs we can offer Burrillville residents, call 1-401-785-2666 or visit our website, www.theautismproject.org.

Community Assistance Information



Burrillville Resources

<http://www.burrillville.org/home/pages/community-resources>

Berean Baptist Church

474 Chapel Street
Harrisville, RI 02830
401-568-5411

Clothing Exchange

1st and 3rd Saturday of month
8:30 am to 10:30 am

Free clothing, shoes, jackets, etc. for men,
women and children.

**Open to all residents of Burrillville,
Gloucester, No. Smithfield, and Foster**

Burrillville Housing Authority

77 Ashton Court
Harrisville, RI 02830
401-568-6200

**Rental Housing / Section 8
For Seniors and Handicapped**

Our Lady of Good Help Church

1063 Victory Highway
Mapleville, RI 02839
401-762-1834

2019 SVDP Food Pantry

10:00 am - 11:00 am : Elderly and Disabled
6:00 pm to 7:00 pm: All others

February 5, March 5, April 2, May 14,
June 4, July 9, August 6, September 3,
October 1, November 5, December 3

Bring your reusable or plastic bags

***If Burrillville schools are closed on a sched-
uled opening, will reschedule to open the
Saturday of that week.
10:00 am to 11:00 am**

Between the Cracks

401-291-0590
Patricia Shaw

Call for help with fuel, rent, groceries and
other needs in emergency situations.

St. Patrick's Church

401-568-5600
Call between 8:00 am to 12:00 pm
Monday to Friday

Food Pantry

Every other Monday 5:30 pm to 7:00 pm
(Tuesday if Monday is a Holiday)

**Clothing and Household Items
also available.**

*** Call for Emergency Appointment ***

Burrillville Seventh Day Adventist

854 Victory Highway
Mapleville, RI 02839
401-678-0035 (Claire)
401-568-5255 (Church)

Food Pantry and Food Closet

Last Tuesday of each month
5:30 pm to 7:00 pm

Burrillville Lion's Club

P.O. Box 414
Harrisville, RI 02830

[https://e-clubhouse.org/sites/burrillville/
contact.php](https://e-clubhouse.org/sites/burrillville/contact.php)

Call for the appropriate contact for
financial assistance to purchase eye
glasses and screening .

More Information and Services

Rhode Island Department of Human Services

1-855-MY-RIDHS
(1-855-697-4347)

<http://www.dhs.ri.gov/>

Supplemental Nutrition
Assistance Program (SNAP)

**Based on income, resources, and
the number in household**

NeighborWorks Blackstone River Valley

719 Front Street, Suite 103
Woonsocket, RI 02895
401-762-0993

neighborworksbrv.org

**Works with residents, businesses,
neighborhood institutions, partners
and communities to enrich
neighborhood life and make affordable
housing opportunities available.**

Community Care Alliance

800 Clinton Street
Woonsocket, RI
401-235-7000

communitycareri.org

**We support people in their efforts to
stabilize and build better lives as-
sisting with life's many challenges
such as education, mental health,
addiction, housing, employment,
etc.**

Meals on Wheels

401-351-6700

www.rimeals.org

This program provides up to five noontime
meals per week to the elderly or disabled.
(\$3.00 donations accepted)

Crossroads Rhode Island

401-521-2255

<https://www.crossroadsri.org/>

Help for the Homeless

Chepachet Union Church

1138 Putnam Pike, Chepachet, RI
401-568-2518

www.chepachetunionchurch.org

**Gently used clothing
at a very small price.**

Food Pantry

1st and 3rd Saturday
10:00 am to 12:00 pm

Stillwater Heights

30 Central Street, #1551
Harrisville, RI 02830
401-710-7344

<http://www.stillwaterheightsapts.com>

**Low Income Housing
for Seniors 62 or better**

Rhode Island Office of Healthy

Aging

401-462-3000

<https://oha.ri.gov/>

Call to ask for a pocket manual of
services or visit the website to view.

Burrillville Addiction Assistance

Wallace Lees Public Safety Complex
Victory Highway, Burrillville, RI
401-710-9054

www.burrillvilleaddictionassistance.com

Addiction Referrals and Recovery Support



**Tri-Town
Community Action Agency**
Helping people. Changing lives.

Main Office:

1126 Hartford Avenue, Johnston, RI 02919

Phone: 401-351-2750

<https://tricityyri.org/>

Other offices:

11 Emanuel Street, No. Providence, RI 02911

185 Main Street, Pascoag, RI 02859

Children, Youth and Families

*Head Start and Early Head Start

*Seasonal Distribution
of Food Baskets and Toys

Seniors and Disabled Adults

**Assist families in providing care
to their loved ones.**

- * Adult Daycare
- * National Family Caregivers
- * ...and more

Food and Nutrition

*WIC Nutrition Program

**For low-income women, infants, and
children up to age 5 at
nutritional risk.**

Sites in Johnston and Burrillville

*Food Stamp Assistance (SNAP)

*Commodities Distribution
(Food Bank)

*Emergency Food Vouchers

Health Center

**Affordable health services available
on a sliding fee discount to families
who meet eligibility requirements.**

Employment Education and Training

401-519-1909

- * Adult Basic Education Program
- * Financial Literacy Program
- * Adult Job Training
- * Youth Opportunity Center (ages 14 to 24)
- * Summer Youth Employment and Training Program

Housing, Energy and Emergency

- * Appliance Management Program
- * Emergency Basic Human Needs
- * Emergency Boiler Repair
- * Emergency Shelter Vouchers
- * Fuel Assistance (LIHEAP)
- * Good Neighbor Energy Fund
- * Weatherization Assistance Program

Affordable Housing in Burrillville

HUD Subsidized Senior Housing Assistance

Ashton Court

Burrillville Housing Authority
William Valentine, Executive Director
77 Ashton Court
Harrisville, RI 02830
Tel: 568-6200 Fax: 568-4735

***Our mission is to provide decent,
safe and sanitary housing
for elderly/handicapped-disabled:
Public Housing and Section 8
existing housing program.***

Bradford Court

Andrea Medeiros, Property Manager
45 North Main Street
Pascoag, RI 02859
Tel: 568-5403 Fax: 568-1717

***We accommodate residents 62 and
older, as well as handicapped
and disabled with a preference
to the elderly.***

Stillwater Heights Housing

Theresa Stelmach, Property Manager
30 Central Street
Harrisville, RI 02830
Tel: 710-7344 Fax: 710-7346

***We provide independent living ac-
commodations for residents 62 and
older who meet HUD income guide-
lines.***

Affordable Mixed Family Housing

Greenridge Commons

Maloney Properties, Property Manager
124 Garvy Ledges Lane
Pascoag, RI 02859
Tel: 762-5220

**Greenridge Commons is a mixed-
income community. To rent an afford-
able unit you must meet certain in-
come requirements.**

The Clocktower Apartments

Maloney Properties, Property Manager
200 Tinkham Lane
Harrisville, RI 02830
Tel: 762-3600

**The Clocktower is a mixed-income
community offering apartments
at three income levels. To rent an af-
fordable unit you must meet certain
income requirements.**

The Assembly Theatre
"The Center for the Arts in Burrillville"
26 East Avenue, Harrisville, RI 02830
<https://www.theassemblytheatre.org/>

The Assembly Theatre is beautifully located next to Harrisville Pond and waterfall. A volunteer group, the Patrons of the Assembly (a 501C3 non-profit), has made it their mission to bring quality events to the theatre for the community to enjoy!

The Assembly Theatre was built in 1934 by mill owner and philanthropist Austin T. Levy. Mr. Levy and his wife, June Rockwell Levy, donated the Assembly to the Town of Burrillville in order for the residents to enjoy plays and performing artists.

The Board of Administration was created by Mr. Levy in 1934 to oversee the Assembly Theatre and the Board continues to manage and maintain this beautiful historic theater to this day. The Board of Administration collaborates with The Patrons of the Assembly Theatre to bring exciting events to the community.

UPCOMING EVENTS

The Salem Sisters Spooktacular - October 7th & 8th

Gatsby - October 21st, 22nd, and 23rd



Town of Burrillville Post Offices



Harrisville Post Office

131 Harrisville Main Street, Harrisville, RI 02830

Wendy Demarais, Postmaster

Mon. - Fri. Retail Hours: 8:30 am -1:30 pm and 2:30 pm - 4:45 pm

Lobby Open: 7:00 a.m. - 5:30 p.m.

Sat. Retail: 9:00 a.m. - 12:00 pm, Lobby Open: 7:00 am - 12:00 pm
401-568-9075

Glendale Post Office

1916 Victory Highway, Glendale, RI 02826

Wendy Demarais, Postmaster

Marlene, Clerk

Mon.-Fri. Retail Hours: 10:00 am -1:00 pm and 2:00 pm– 5:00 pm

Lobby Open: 6:00 a.m. - 6:00 p.m.

Sat. Retail: 8:30 am -11:30 am, Lobby Open: 6:00 am - 3:00 pm
401-568-8782

Pascoag Post Office

35 Bridgeway, Pascoag, RI 02859

Christopher Jackson, Postmaster

Mon.- Fri. Retail Hours: 8:15 am -12:30 pm and 1:30 pm - 4:45 pm

Lobby Hours: 7:00 am - 5:00 pm

Sat. Retail: 8:30 am -11:30 am

Lobby Open: 7:00 am -12:00 pm
401-568-8790

Mapleville Post Office

963 Victory Highway, Mapleville, RI 02839

Wendy Demarais, Postmaster

Mon.-Fri. Retail Hours: 8:30 am - 12:30 pm

Lobby Open: 8:00 am - 5:00 pm

Sat. Retail: 9:00 am -12:00 pm

Lobby Open: 8:00 am - 12:00 pm
401-568-7312



Your Local Fire Departments

Harrisville Fire Department

Michael E. Gingell, Chief
201 Callahan School Street, Harrisville, RI 02830
Business Telephone: 401-568-5110



Oakland-Mapleville Fire Department

Joseph E. Bertholic, Chief
46 Oakland School Street, Oakland, RI 02858
Business Telephone: 401-568-5720

Pascoag Fire Department

Mark St. Pierre, Chief
Hose #1 105 Pascoag Main Street Pascoag, RI 02859
Business Telephone 568-4470
Hose #2 141 Howard Avenue, Pascoag, RI 02859
Business Telephone: 401-568-4920

Wallum Lake Fire Department

Robert Bishop, Chief
P.O. Box 354, Pascoag, RI 02859
Business Telephone: 401-568-9019

Note: Business telephones are not manned at all times.
Dispatch at the police department can be used for emergencies 401-568-6255

For emergencies dial 911



Give Back to Your Community

With a sense of pride!

Inquire about volunteering!



State Government Officials

Governor

Daniel McKee

www.governor.ri.gov

401-222-8096

Secretary of State

Nellie Gorbea

www.sos.ri.gov

401-222-2357

Lt. Governor

Sabina Matos

www.ltgov.ri.gov

Attorney General

Peter Neronha

www.riag.ri.gov

401-274-4400

General Treasurer

Seth Magaziner

www.treasury.ri.gov



District 23, Jessica de La Cruz

sen-delacruz@rilegislature.gov

District 47, David J. Place

rep-place@rilegislature.gov

District 48 Brian C. Newberry

rep-newberry@rilin.state.ri.us

617-406-4619

NOTES

Burrillville Town Hall
Office of the Town Manager
105 Harrisville Main Street
Harrisville, RI 02830