

# Burrillville Bugle

Spring-Summer 2022



## **Town Hall & Annex**

---

### **Hours**

Mon. - Wed. 8:30 a.m. to 4:30 p.m.

Th. 8:30 a.m. to 7:00 p.m., Fri. 8:30 a.m. to 12:30 p.m.

---

#### **Town Hall**

105 Harrisville Main Street

401-568-4300

Fax: 401-568-0490

#### **Town Hall Annex**

144 Harrisville Main Street

401-568-4300

Building Ext. 127 / Planning Ext.130

Fax: 401-710-9307

---

Burrillville Historic Community Since 1806

*Embracing our Past...Envisioning our Future*

## Index

	<b>Page</b>
Addiction Assistance Program & Prevention Action Coalition	44
Adopt-A-Spot	13
Affordable Housing: Senior & Mixed Families	66
Animal Control Shelter	45
Berard-Desjarlais American Legion, Post 88	57
Boy, Cub, and Scouts USA	60
Board of Administration –The Assembly Theatre	67
Burrillville Extended Care	50
Commerce Park	9
Community Assistance Information	63
Conservation Commission	60
Department of Public Works	24
Department of Public Works, Refuse & Recycling	27
Emergency Management	42
Farmers Market	61
Finance Director	14
Fire Departments	69
Historical & Preservation Society	56
Jesse M. Smith Memorial Library	52
Lions Club	56
Parks and Recreation	33
Pascoag Public Library	58
Police Department	40
Post Offices	68
Redevelopment Agency	10
School Department	48
Senior Services	62
Sewer Commission / Wastewater	55
Spring Lake Beach	39
State Government Officials	70
Tax Assessor	16
Town Clerk	18
Town Council President	4
Town Manager	6

# How to Get Information/Contact Us

**Use this Publication:** Contact information, such as phone numbers, extensions, and email addresses are listed within under the department headings.

**Town Website:** The Town has a website that is full of information for residents and visitors! [www.burrillville.org](http://www.burrillville.org).

- The website is a great tool to find current information out about the Town, obtain contact information for all the different Town departments, Town budgets and finances, and very helpful EMERGENCY AND CODE RED INFORMATION.
- **E-Subscribe:** Sign up to receive newsletters, job opportunities, notices, etc., for what interests you and be up-to-date as to what's current in Burrillville.
- **Public Notices:** View current meeting news, job opportunities, press releases, and news from the Parks and Recreation Department, current rubbish and recycling information, as well as a copy of this Burrillville Bugle.
- **Pay Taxes:** For your convenience, you can pay your taxes, using your account number and PIN shown on your bill. There is a convenience fee of 3%, with a minimum of \$2.00.
- **Code Red:** Sign up to be notified by your local response team in the event of an emergency situation or critical community alert.
- **Forms & Documents:** Many of the forms and documents needed to do business with the different Town agencies, such as applications, registrations, tax exemptions forms, etc., can be found right within this tab.
- Click on the **iHelp Center** for links on additional topics of interest, one being a separate website dedicated to promoting Burrillville's quality of life, the natural beauty and local history of our Town. Click on Visit Burrillville for the link.

**Facebook:** Like us on Facebook! The Town of Burrillville and the Police Department have Facebook pages. It is another great way for us to communicate with the residents and visitors of Burrillville in this digital age. Both are updated regularly.

Town Council Members			
Name	Address	Phone	Term
Donald A. Fox	105 Harrisville Main St. Harrisville, RI 02830	265-9674	11/30/2022
Stephen N. Rawson	P.O. Box 332 Harrisville, RI 02830	479-6909	11/30/2022
Dennis M. Anderson	593 Whipple Rd. Pascoag, RI 02859	339-0047	11/30/2022
Jeremy Bailey	585 Wallum Lake Rd. Pascoag, RI 02859	402-0289	11/30/2024
Justin Batalon	84 Fox Run Dr., Harrisville, RI 02830	568-8210	11/30/2024
Amanda Gingell	45 Maple Dr. Harrisville, RI 02830	578-6182	11/30/2022
Ray Trinque	300 Centennial St. Pascoag, RI 02859	568-0858	11/30/2024

---

## Town Council President

Donald Fox

---

Greetings,

I am excited to write this edition for the Burrillville Bugle. Excited, because we finally are putting Covid-19 in the rearview mirror. As I write it, we are approximately 24 months out from the day that this pandemic began. We all recall those grim days of lock downs, closed businesses, and distance learning school days. It was horrible on so many levels for most of us. Watching my children attend school once again without masks, seeing our businesses rebound, and feeling the imminent approach of warmer days has me upbeat!

The last of the snow is melting and I want to thank our Department of Public Works, which once again managed the snow so well. Given the size of our Town, we have some of the best cleared roads after a winter storm and my thanks go out to that Department for their hard work during each snowfall. As the snow is melting, the Department is turning its attention to the Hauser Field Complex, where a new infield on one of the fields will be installed.

I would also like to thank the School Department and all staff therein. They oversaw the final stretch of Covid related hardship in stride. The students did as well as we could have expected, and I am sure all are glad to be back to normal. Covid did not seem to affect our ongoing reign as a Sports Title Town. The Girls Hockey Co-Op Team (with Ponaganset and Bay View) are Division I State Champions. Boys Hockey made it to the playoffs before losing to a prep school. Our Boys Basketball team made it to the Division II Championship game, before losing by 1 point to Shea in a hard-fought game. Boys Basketball also made it to the State Tournament, only losing to eventual Division I Champs, Classical. Girls Basketball made it to the semi-finals, losing to another eventual State Champ, Toll Gate. Competitive Cheer made it to the State Finals and finished Second in Division IV. Earnest efforts were made by Boys Wrestling, Boys and Girls Swim, Indoor Track and Gymnastics. The Town Council offers its congratulations to all our athletic teams from this past season, and all the best to our spring and summer sports teams.



Municipal operations are also back to normal. Buildings are fully opened. The Town Council is once again meeting in person, welcoming live participation from our residents and happy about it. In June, the Town Council will once again seek to pass a budget that is manageable for our residential and commercial taxpayers. Inflationary pressures are at the forefront of our deliberation process and each member of the Town Council is aware of the pain being caused to all of us as we buy gas, heat our homes, shop for groceries, and raise our families. We are committed to judiciously spending tax dollars more than we ever have been. We must continue to control spending, without sacrificing the services that each resident should expect from the Town. I would be remiss if I do not always remind our residents that we all live in a community that is financially well managed.

The Town of Burrillville's Charter Review Commission will have completed its work by now and will have made recommendations to the Town Council for possible changes. The Charter is the foundational document for managing, organizing, and running our Town. It is reviewed by the Charter Review Commission every 5 years. Suggested changes are brought to the Town Council for consideration of placement on the upcoming ballot for election year (2022). At the time of this publication, any recommendations to go to ballot will be close to being made. Please check [www.burrillville.org](http://www.burrillville.org) for any such recommendations.

The Assembly Theatre is once again looking at an event-filled spring and summer. Performances and activities are already booked into next fall. Keep an eye out for the late summer and early fall food truck events that will once again be held on Theatre grounds. Please visit the theatre's website for more information: <https://www.assemblytheatre.org/>

I know that I share your outrage at the war taking place in the middle of modern-day Europe. As a young man, I received a degree in Soviet & East European Area Studies and for a time thought to work in the CIA. I ended up in the textiles business. During my studies in the former Soviet Union and through the early 1990's I traveled extensively throughout Ukraine. It is heart wrenching to watch the senseless deaths of so many innocents and the indiscriminate and wanton destruction that the Russians brought to that country. It reminds me that freedom is not free. It is often fought for and won through bloodshed and horror. I support the Ukrainian people and their fight for freedom from Russian oppression and encourage all to support the humanitarian relief efforts in any way you can. Our Town has already been home to several private fundraiser efforts as of this writing and I am sure will see more in the future. Freedom to Ukraine!

In closing, may your summer be filled with family and friends as you enjoy warm breezes, BBQ's, fun vacations, days on the rivers and lakes, and all that comes with this time of the year in Burrillville.

Sincerely,

Donald Fox

**TOWN OF BURRILLVILLE**



**1806**

---

**Town Manager**  
Michael C. Wood  
X145  
[manager@burrillville.org](mailto:manager@burrillville.org)

---



What an experience the last two (2) years has been. COVID has been a very difficult challenge, but we all know that! I'm hoping we learned from the experience and some of the mistakes made and do not repeat them going forward.

The Town provided the COVID-related services and followed the guidelines set out for us by the Federal and State governments, but we were careful not to over-reach and not to use COVID as an excuse to over regulate our businesses and infringe on individual freedoms.

Many of our friends and neighbors volunteered in many different ways under very difficult circumstances in uncharted waters, so to speak. I can't list everyone, but you all have our thanks and gratitude for a job very well done.

It's uncertain what will happen with new COVID variants, but please rest assured that we will be careful in our response and will keep the Town's best interests as our top priority when we evaluate Federal and State recommendations and "mandates" going forward, particularly in our schools. And personal kudos to the Burrillville Mom's group!

### **Budget/Town Services**

During the first year of the pandemic, Town services were modified, but we remained open for business for the duration. The Town's Municipal Union worked with us to cut back on hours worked allowing us to provide safe services (in-person, by appointment and on-line), reduce costs and where possible to work from home using technology to offset in-person presence in our buildings. Public Works went to a part-time schedule until winter, when we need a full complement of staff to plow and deal with weather events for public safety.

Whereas, I'm sure these measures were inconvenient to some, given the unknown impacts of COVID at the time and with an emphasis on personal safety, we came through it pretty well! We thank our residents for your patience and support!

The Town's Public Safety employees worked every day during the pandemic despite the difficult and unknown circumstances associated with the original strains of COVID. We thank each and every one of our Public Safety personnel and their support staff (and their families) Town-wide for serving the community and risking their own health and safety to keep us safe!

It was almost impossible to set a Town/School budget because State Aid, or revenue to the Town, was compromised to the point where without Federal intervention, the State would not have been able to provide its share of revenues to cities and towns needed to support our budgets.

The Town Council, School Committee and the administrations worked extremely well together. As a result, we passed a bare-bones budget, got tax bills out (albeit very late) and set up a financial plan for the upcoming years. We thank the municipal and school employees who worked with us to address the operational and financial impacts of the pandemic.

Unfortunately, the State's financial problems probably are not over, but we are well positioned to deal with all but the most extreme of circumstances.

### **School Bonds**

The Town Council sponsored a 7 million bond issue to improve school facilities. That bond was approved by the Town's voters in 2020. The Town Council continues to pro-actively address physical improvements in schools and other Town facilities so that we do not have major financial surprises in future years.

### **ARPA**

Federal American Rescue Plan funds (ARPA) in the amount of \$5,037,776 has been/will be received by the Town. This funding, if properly used, will help the Town in many ways. It can be used to minimize or avoid future taxes by funding projects and programs that would have required bonding (debt) or appropriating money from future operating budgets, paid for by taxes. Examples: water, sewer, broadband infrastructure projects, critical equipment purchases and economic development/redevelopment projects or programs. ARPA funds can also be used to assist businesses and non-profits who experienced quantifiable revenue/business losses during the pandemic.



As with most Federal programs, there are rules, regulations and audit related requirements that we must comply with, all of which will influence how the Town decides to spend or allocate these monies. Please note, the schools have their own Federal funds which are separate from ARPA monies.

### **So, What Are We Doing Post COVID?**

Town services have not been impacted to any major degree except we are still working to staff our part-time positions in Public Works, Burrillville Extended Care and Spring Lake Beach. If your family wants some part-time work, look for local ads soliciting these jobs or please give my office a call and we'll try and get everyone on a potential hiring list. It can be a nice win-win for family members to make some decent money while allowing our full-time employees to work on the larger projects and traditional programs/services.

### **Economic Development**

Our redevelopment efforts in Pascoag are still moving in the right direction. WellOne has established a nice base of operations as an anchor to the village.

Local businesses are springing up and our old mainstays are still there to support the village as they have done for many years.

The Redevelopment Agency is working on future attractions and programs to

In Stillwater, Art Box Studios has opened up a new studio and retail gallery. They offer classes and workshops with retail space for gifts and creations by local artists. Stop in and support Art Box, 180 Tinkham Lane, Harrisville.

The old gym and UFO Furniture warehouse in Stillwater are under new ownership, and we are working to find suitable businesses to locate in Stillwater.

### **Nasonville**

The Town Council and Redevelopment Agency are focusing on various projects to spur redevelopment in Nasonville. The old Turex Mill complex is under new ownership and plans have been approved to reconstruct the existing buildings for mixed-use – both residential housing and a small business presence. We are looking at major infrastructure improvements (water and sewer) and the State is working with the Town to construct a new bridge for vehicle travel while saving the existing bridge as a pedestrian walkway across the river.

### **Burrillville As A Destination**

The March edition of HeyRhody has a great article about Burrillville – a short summary says: Explore Burrillville – The northwest corner of the State offers rural beauty, delicious eats, and even famous ghost stories. On-line you can find the article at <https://heyrhody.com/>. The Town posted the article, and you can find it by going to the Economic Development page and clicking the “Explore Burrillville” link. (<https://heyrhody.com/stories/explore-burrillville.95318>)

### **Lunch & Learn Seniors**

Seniors, be on the lookout for our Spring/Summer Lunch and Learn, which will be back shortly!



### **Spring and Summer**

Winter is hopefully over, and no more snow! This is a beautiful time in Burrillville. Enjoy our passive recreation areas and parks, our beautiful waterways for boating and fishing, open space for hunting, hiking and all Burrillville has to offer.



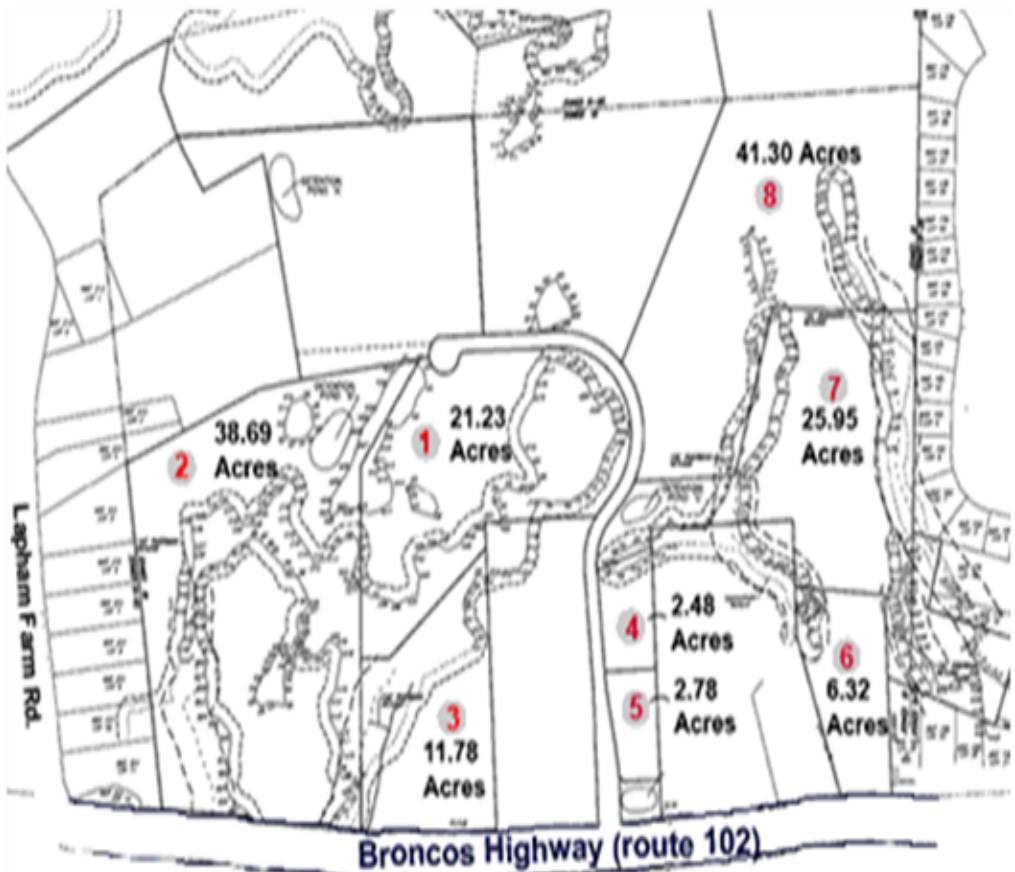


**We are looking for businesses generating jobs.**

***The Town has acreage for sale  
(with water and sewer available)  
at Commerce Park.***

***If you or someone you know is looking to locate or expand a business,  
please contact the Town Manager or Town Planner at 568-4300 ext.145.***

***Commerce Park is Located off Route 102 between Central Avenue and Lap-  
ham Farm Road.***



**Commerce Park  
Burrillville, Rhode Island**

---

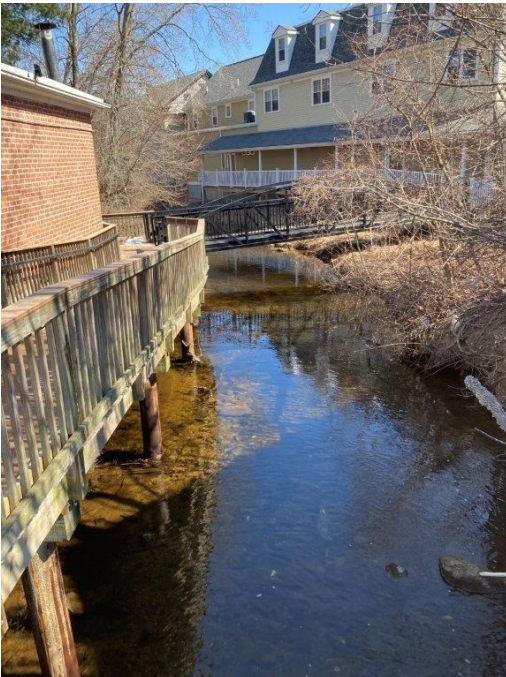
## **Burrillville Redevelopment Agency**

James Langlois, Chairman

---

### **TOURISM**

One off the many facets the Redevelopment Agency which has not been mentioned much is tourism. Over the years, the agency has worked with the Blackstone Valley Tourism Council to put Burrillville “on the map” so to speak. This involved compiling a list of the Town’s attributes such as hiking, fishing, and hunting areas. Listing state parks and recreation opportunities like swimming, cycling, events, and festivals. Even developing a geo-tourism program. All of this has been working behind the scenes for many years. Today we are starting to see the results of this effort. More and more out of town visitors are discovering Burrillville and its offerings. They are attending the Jessie M. Smith Riverwalk Summer Concert Series. Live theater, music events, and Food Truck days at the Assembly Theater. And in recent years, the Burrillville Arts and Crafts festival is enjoying great attendance. In the Redevelopment Districts, we are pleased to have two local businesses that are enjoying statewide reach. Bravo Brewing in downtown Pascoag and Art Box studio in the Stillwater Mill Center. Both offer outstanding products and activities that draw tourist and consumers to the area. Once here, they discover many of our other restaurants, businesses, and recreational offerings Burrillville has to offer. This has led to locally owned establishments within redevelopment Districts and Town-wide to be discovered. The redevelopment initiative is more than knocking down and building or improving new and existing properties. It is about establishing spaces where local businesses can thrive, and improving the quality of life for residents and tourist.



### **DOWNTOWN PASCOAG**

#### **REDEVELOPMENT DISTRICT**

2021 was very busy for projects in downtown Pascoag. Anchoring the activity was the refurbishing of the former Bank building on Main Street by WellOne Primary Health and Dental Care for expanding their local services. In partnership with the Burrillville Department of Public Works, expansion of the Park Place municipal parking lot, creation of the High Street Park along the Pascoag River across from Gonyea Park, and the beginning of what will be the Pascoag Green Space between the WellOne Bank Building and Park has begun.

2022 will see the final coat of asphalt and lot stripping on new Park Place parking lot. The installation of a permanent shade structure to be placed on the sluice way deck at Gonyea Park. Finishing touches to High Street Park including benches and walkways. Improvements to the Pascoag River Walk between Sayles Avenue and High Street. River Walk Signage will be added along with other aesthetic improvements. And finally, the completion of the Main Street green space which will feature a lawn area with flowering trees, shrubbery, and decorative fencing, a 30'x 20' stage area, benches or natural seating, and new walkways. The Redevelopment Agency is also in the process of purchasing a fountain to be installed in the Green Space Park that will be similar to the one that was in the middle of Fountain Square at the intersection of Sayles, High, Pascoag Main, and South Main Streets many years ago. A historical story board depicting the fountains history as well as pertinent facts of other prominent fountains in Town will also be installed. Future Main Street enhancements such as lighting and seasonal attractions are currently in the planning stages. Please take the time visit downtown Pascoag and see the positive changes that are taking place.



### **STILLWATER MILL REDEVELOPMENT DISTRICT**

The Agency would like to officially welcome Art Box Studio to the area. Located at 180 Tinkam Lane, Art Box has quickly become a bustling center for art lessons, children's programs, and creativity. They also feature a display gallery of rotating artist and artisan products made by many local artists. Stop in and check them out.

Interested in starting or opening a business in the Stillwater Mill Center. Please contact the Redevelopment Agency at 401-568-4300 ext. 145 or the Burrillville Planning office at ext. 130.



As the warmer weather approaches, the Stillwater Pavilion will be available to rent for your next function or event. Featuring ceiling fans, wind and shade screens, lawn area, Restrooms with hot and cold water and flush toilets, and easy access. The pavilion is great place to hold your outdoor function. Contact the Burrillville Parks and Recreation department at 401-568-9470 or online at [www.burrillville.org](http://www.burrillville.org).



---

**Adopt-A-Spot**  
568-4300 x145  
[glabossiere@burrillville.org](mailto:glabossiere@burrillville.org)

---

*We would like to thank all current sponsors for their generous gift of time and money which enhances the beauty of Burrillville, the Town we call HOME.*

◇ American Legion Hall, Post 88	Pascoag Bridgeway, Veterans' Park
◇ Bella Restaurant	Restaurant Entrance on 102
◇ Burrillville Addiction Assistance Program	Pascoag Bridgeway
◇ Burrillville Conservation Commission	Wallum Lake Road Canoe Launch
◇ Burrillville Conservation Commission	Route 102 Gateway
◇ Burrillville Democratic Committee	Jesse Smith Library, right side
◇ Burrillville Garden Club	Pascoag Bridgeway
◇ Burrillville Garden Club	Gonyea Park Sign
◇ Burrillville Garden Club	Clean ups throughout Town
◇ Burrillville Industrial Foundation	Commerce Park Entryway
◇ Cow's Tail Deli and Creamery	Gonyea Park Sign
◇ Craig Cayer	Spring Lake Beach Island Entrance
◇ Harrisville Fire Department	Firefighters' Memorial Park
◇ Harrisville Fire Dept. (Hose Co.)	Traffic Island in front of Fire Station
◇ Lawn and Garden—Chris Thompson	White Mill Park, between signs
◇ Lions Club	Lewis Bleiweis Park
◇ Lions Club	East Ave. and Harrisville Main
◇ Lynch Fence Co.	Corner of River St. and Chapel St.
◇ Natural Resource Services, Inc.	Clocktower Square
◇ Unilock	Freedom Park Sign
◇ Liberty Farm	Spring Lake Beach Sign
◇ The Spink Family	Bridgeton Mill Village Plantings
◇ Tobin Style Bootcamp	Tinkham Land Entrance

*The Adopt-A-Spot program draws on the generosity of local businesses and organizations to help beautify our Town. Each space is uniquely designed and kept up by the sponsors. Please take notice of their beautiful work throughout the spring and summer season and consider adopting a spot of your own.*

**Available Locations**

- Beckwith Bruckshaw
- Jessie Smith Library, Top of Stairs
- Memorial Lodge Skate Park
- Summer and Shea Lane Triangle (**to be maintained only**)

**Please support local business and service organizations!**

---

**Finance Director**  
Leslie McGovern  
X161  
[finance@burrillville.org](mailto:finance@burrillville.org)

---

**A message from the Finance staff:**

We would like to congratulate Dawn Dinges in her new role as Financial Aide in the Tax Collector's Office. Please join us in welcoming Dawn aboard.

**FYE 2021 Audit:**

The audit for fiscal year ending June 30, 2021 will be completed by May 15, 2022. The Town continues to maintain a strong financial management operation.

**American Rescue Plan Act (ARPA):**

The Town of Burrillville will be receiving a total of \$5,037,776 in ARPA Funding (County \$3,273,692 and NEU \$1,764,084). The Town has received 50%: \$882,042 in NEU funding was received on July 2, 2021 and \$1,636,846 in County Funding was received on August 30, 2021. The remaining 50% of funding is expected to be received before July 2022.

The Town held the last ARPA Funds public hearing on March 9, 2022. The ARPA subcommittees are currently reviewing all submissions and will be making recommendations to the Town Council.

**Debt:**

Finance is working with PFM Financial Advisors (Town's financial advisor), and Standard & Poor to acquire and S&P rating for the Town by May 2022 (before the School Construction Bond is issued).

Town is expected to close in May 2022 on the School Construction Bond of not to exceed \$7M.

**2021 TAX BILLS**

Due dates are as follows:

- 1<sup>st</sup> Quarter - July 27 thru August 10, 2021
- 2<sup>nd</sup> Quarter - October 19 thru November 2, 2021
- 3<sup>rd</sup> Quarter - January 18 thru February 1, 2022
- 4<sup>th</sup> Quarter - April 19 thru May 3, 2022

***All delinquent 2021 taxes are assessed interest at a rate of 12% per annum.***

**Payment Methods:**

***Any returned checks/ACH are assessed a \$35.00 fee.***

- AUTOMATIC CLEARING HOUSE (ACH) – Automatic Payments
  - ◊ Auto debit is free and prevents blocks/holds at the RIDMV and prevents interest on your tax account(s). Withdrawals are available on a monthly, quarterly or annual schedule.

- ◇ Forms are available online at [www.burrillville.org](http://www.burrillville.org) or in the Tax Office. Please allow one week to set up or cancel the debit.
- DEBIT OR CREDIT CARD payments can be made online at [www.burrillville.org](http://www.burrillville.org) or in the Tax Office. **NO payments will be accepted over the phone.** You will need your Account Number and PIN which is listed on your tax bill. **All card payments are assessed a convenience fee of 3% with a minimum of \$2.00.** Please check our website, as fees may change.
- DROP BOX is available near the rear entrance of the Town Hall for your convenience. **Please NO CASH, checks and money orders only.**

The Town participates in State programs such as placing blocks with the RI Registry of Motor Vehicles (DMV) and RI Income Tax Refund Offset program to aide in the collection of delinquent taxes.

**Motor Vehicle Registrations/Renewals:** Registration blocks are sent to the DMV for all delinquent motor vehicle taxpayers. If a block is placed with the DMV, ALL motor vehicle taxes under your name must be paid in full by cash, money order, or credit card. A personal check will delay the release by 10 business days.

Note, the registration block may take up to 48 hours to be released by DMV after the request for release is made by the Tax Collectors office.

### **Did not receive a bill?**

The failure to receive a bill does not eliminate the requirement for a timely payment of any taxes that are due.

- If you move, please contact the tax assessor's office and the DMV to update your mailing address. Reminder, motor vehicle tax bills are prior year tax expense.
- Tax bills were mailed by the second week of July each year. If you did not or do not receive a bill, please contact the Assessor's Office. 401-568-4300 x 181

### **Need a reminder?**

Sign up on our website "**E-subscribe**" to receive quarterly reminders of upcoming due dates. Be sure to check off "Tax Collector".

### **"Go Green"**

Help us save you money by supplying our office with an **email address**, for future correspondence.

### **Financial Difficulties?**

If you are having financial difficulties, please contact the Tax Collector's office at 401-568-4300 X 184 as soon as possible. Early intervention is the key to the Town's ability to be of assistance.

---

**Tax Assessor**  
Jennifer Mooney X125  
[assessor@burrillville.org](mailto:assessor@burrillville.org)

---

**Office Hours**

Monday thru Wednesday 8:30 a.m. - 4:30 p.m.

Thursday 8:30 a.m. - 7:00 p.m.

Friday 8:30 a.m. - 12:30 p.m.

All taxpayers are welcome to stop in the Assessor's Office for a copy of your property record card and the Assessor's map showing your land lines. There is no charge to the homeowner for this info.

If you have moved in the last year, please check with the Assessor's Office to be sure your current address is on file with us. The law requires you to notify the Division of Motor Vehicles within 10 days of any change of address if you have any registered vehicles.

The Town of Burrillville contracted with Northeast Revaluation to conduct a State mandated full property tax revaluation. The goal of the revaluation project was to determine the market value of all taxable properties within the Town as of December 31, 2021. New value letters were mailed out to all property owners on March 7, 2021. Your new value will be reflected on the 2022 tax bill to be mailed in July. Please do not multiply the new value by the current tax rate. Due to the overall increase in values, the tax rate will be adjusting downwards. If you were not satisfied with your new value, you had the opportunity to schedule an informal hearing with Northeast Revaluation through March 23, 2022. If you are still aggrieved after the informal hearing, your next step will be to file an appeal with the Tax Assessor. You are also able to file an appeal with the Tax Assessor if you did not have an informal hearing with the revaluation company. The time period to file an appeal with the Tax Assessor is 90 days from the first quarter due date.



The State passed the Motor Vehicle Phase-out Program in 2017. We are currently in the fifth year of the phase-out which uses the State's values and, by State law, the Town must charge excise tax on 75% of the value and the tax rate is \$30.00/thousand. Vehicles that are 15 years old or older are no longer taxed.



The Assessor's Office will be able to explain how your value and tax were calculated. Please keep in mind that the Town has no control over and cannot change the value of the vehicles. Exemptions



available to Burrillville taxpayers include: Senior, Disability, Blind, Veterans, Prisoner of War, Gold Star Parent and a Historical Cemetery Preservation Property Tax Abatement. The senior and disability exemptions are income based and must be renewed annually. To qualify for a senior exemption you must

be 62 years of age and you must have owned and occupied residential property in Burrillville for 3 years prior to the filing of the application. Applications must be received by December 31, for the next tax roll. There is one senior exemption allowed per household. If you qualify, please stop in to the Assessor's Office with proof of age.

The Disability exemption is available to taxpayers who are totally disabled and receiving benefits. A copy of the "Notice of Award Letter" is required to receive the exemption. Each year upon renewal you must submit a copy of your "New Benefits Letter" to receive the exemption for another year. If you have any questions with regards to available exemptions, please call the Assessor's Office at 568-4300, ext.125

Exemption application deadlines are as follows:

- Senior, Veteran, Blind & Historical Cemetery: December 31, 2022
- Disable: January 31, 2023

Qualified exemptions will be applied to the 2023 tax bill.



---

## Town Clerk

Vicki Martin

X133

[Townclerk@burrillville.org](mailto:Townclerk@burrillville.org)

---

### Office of the Town Clerk

- |   |                             |
|---|-----------------------------|
| ♦ <i>Marriage Licenses</i>                      | ♦ <i>Notary Public</i>      |
| ♦ <i>Birth, Marriage and Death Certificates</i> | ♦ <i>Probate Court</i>      |
| ♦ <i>Dog Licenses</i>                           | ♦ <i>Recorder of Deeds</i>  |
| ♦ <i>Hunting &amp; Fishing Licenses</i>         | ♦ <i>Voter Registration</i> |

### Fishing Licenses

The Town Clerk's office is an authorized sales agent for the Rhode Island Department of Environmental Management (DEM) and can issue all fishing and hunting licenses and permits from a fully web-based system. There is an Enhance Access Fee of \$2 per license and \$0.50 per permit for residents and \$3 per license and \$1 per permit fee for nonresidents.



### Notary Public

Notary public services are available at the Town building during regular hours. There is no fee for this service.

### Town Council

Regular meetings of the Burrillville Town Council are scheduled for the second and fourth Wednesday of each month at 7:00 p.m. in the Town Council Chambers. Schedule changes are posted at the Town building and on the Town website. To appear before the Town Council, contact the Town Clerk's office for the procedure for submitting an agenda request.

### Dog Licenses

Dog licenses are now available online. You can find the instructions and the link to the online dog licenses on the Town Clerk's page of the Town website. Fill out the application, upload your dog's rabies certificate and pay online, we send you the tag and certificate. There is an additional fee for this convenience: \$1 each dog and 50 cents each transaction. Dog licenses are renewable in April every year, regardless of when rabies are due. Look in the Bargain Buyer for the announcement when the new tags are available.



### Vital Records

The Town Clerk's office provides certified copies of birth, death and marriage records.

- Vital records are registered in the town or city in which the event occurred, or the city or town where the person was living.
- Certified birth records for people born in Rhode Island in 1960 and later can be issued at all city and Town Clerk's offices.

- The fee for records requested by mail are \$25; fees for records requested in person in the Town Clerk's office are \$22. Additional copies of the same record are \$18 if obtained at the same time.
- To receive a certified copy of a birth, death or marriage record via mail, you must send a readable copy of your picture identification and a completed application which you can find on the Town Clerk's page of the Town website. If you cannot access the application, please provide the following information:
  - ◆ the name on the birth, death or marriage record
  - ◆ the date and city/town where the event occurred
  - ◆ your relationship to the person named on the record
  - ◆ why you need the record
  - ◆ for births only, provide the name of the father and the mother's maiden name
  - ◆ your signature and printed name
  - ◆ your mailing address and your home phone number in case we need to contact you
  - ◆ send payment with your request, check or money order
- **How to request a vital record online.** All you need is your credit card and a copy of your government issued identification. The same rules apply as if requesting in person or by mail. You can find the rules of who has access to vital records, and a link to the online vitals, on the Town Clerk's page of the Town website. There is an additional \$5 processing fee for online orders. Call the Town Clerk's office at 568-4300 with any questions.

### Marriage Licenses

**Rhode Island residents** - Couples should apply for a marriage license at the Clerk's Office in the city/town where one (or both) of the parties reside. If at least one of the parties lives in Rhode Island, the marriage license is valid in any city or town and the ceremony may take place anywhere in Rhode Island.



**Non-residents** - If neither party lives in Rhode Island, the license must be obtained at the Town Clerk's office in the city or town where the ceremony will take place.

Marriage licenses cost \$24. The license is valid for 90 days. Call the Town Clerk's office for documentation requirements.

### 2021 Charter Review

The Burrillville Town Charter was last amended at the 2016 General Election. Therefore, pursuant to Section 19.12 of the Town Charter, in September 2021 the Town Council appointed a committee of nine (9) members to review this Charter. Said committee shall, within six months of its appointment, submit to the Town Council a report with its recommendations for amendments, additions or deletions. If approved, these amendments will then go to voters at the general election scheduled for November 8, 2022.

### **Burrillville Board of Canvassers**

Anita Hurley-Diez, Chair  
Marjorie Fenley  
Betsy Alper

Blanche Boisvert, Vice Chair  
Peter Houle  
Vicki T. Martin, Clerk

The Board of Canvassers is located at the Town Clerk's office and is available during Town Building hours. You may reach the Board of Canvassers at [elections@burrillville.org](mailto:elections@burrillville.org).

### **Election News**

#### **Primary 2022- 09/13/2022**

The 2022 Statewide Primary will be held on Tuesday, September 13, 2022.

To vote in a party primary you must disaffiliate from any other party at least 30 days before the primary date. Declarations of candidacy and related deadlines are administered by the Department of State's Elections & Civics Division. Disaffiliate at the Board of Canvassers' office at the Town Building or online at Rhode Island Voter Information Center.

The Board of Canvassers often combines polling locations for primaries. Locations are posted on the Town's website and advertised in the Bargain Buyer. You can also call the Board of Canvassers at (401) 568-4300, Ext. 132 or visit the state voter information center at <https://vote.sos.ri.gov/>

### **2022 General Election**

A general election will be held in Rhode Island on November 8, 2022. All of Rhode Island's executive officers are up for election as well as a seat in the U.S. House of Representatives, a Senate seat in the R.I. General Assembly and two seats for Representative in the General Assembly.

### **Polling Locations**

Precinct 1	Steere Farm Elementary School	Precinct 4	Callahan Elementary School
Precinct 2	Beckwith-Bruckshaw Memorial Lodge	Precinct 5	Burrillville Police Station
Precinct 3	Burrillville High School	Precinct 6	Burrillville Middle School

Please check the Town website or contact the Board of Canvassers if there is any doubt about your polling location.



**Redistricting:** The Rhode Island General Assembly, in conjunction with the 2020 census, is tasked with redistricting congressional and state legislative lines. This may mean some changes to your current precinct, senate and legislative districts. A post card will be mailed to all registered voters with updated precinct information once the process is complete. You may visit <https://www.riredistricting.org/> to see maps of the new lines.

**Rhode Island Voter Information Center:** [www.sos.ri.gov](http://www.sos.ri.gov) and choose the Elections and Voting tab.

- Check your voter registration
- Find your current elected officials
- View sample ballots for upcoming elections
- Locate your local board of canvassers
- Find where to vote

**How do I register to vote?** You can now register to vote online at the Voter Information Center: <https://www.sos.ri.gov> and choose the Elections and Voting tab. Here you can register to vote, check your voter registration and find your polling location. You can also register to vote in Rhode Island by completing a voter registration form which may be obtained at the Burrillville Board of Canvassers at the Town building or the RI Board of Elections. You can download the form from the State Board of Elections website: <https://elections.ri.gov/voting/registration.php> . Many agencies which serve the public, such as the Department of Motor Vehicles, Department of Human Services, and the Department of Mental Health offer voter registration services to their clients as mandated by the National Voter Registration Act.

### **Election Officials Needed**

In order to serve as a pollworker you must:

- Be registered to vote in Rhode Island
- Be able to read the Rhode Island Constitution in English
- Be able to write your own name
- You cannot serve as a pollworker if you are a convicted felon
- You cannot serve as pollworker in a primary if you are a city, state, or federal employee

**High School Students:** You may be eligible to work at the polls if you are at least 16-years-old, a junior or senior, have at least a 2.5 GPA, and receive permission from school officials. Contact your Board of Canvassers for more information.

Find the application form online at [www.burrillville.org](http://www.burrillville.org) or visit your Board of Canvassers Office, 105 Harrisville Main Street, Harrisville.

### **VOTER ID**

Voter ID became law in 2014. Under this law (RIGL §17-19-24.2) all voters are required to present valid photo identification prior to voting at the polls. Voters will need to present one of the following forms of photo ID:

- RI Driver's License/Driver's Permit
- RI Voter ID Card \*
- U.S. Passport
- Photo ID issued by a U.S. educational institution
- U.S. military photo ID
- Photo ID card issued by the United States or the State of Rhode Island
- Government issued medical card with photo
- ID Card issued by any federally recognized tribal government

\*The Rhode Island Department of State is issuing free voter photo ID cards to individuals who do not possess any of the valid Photo IDs listed above. See the Department of State's website for additional information on the program, or call (401) 222-2340.

**Protecting Your Vote:** No eligible voter will be turned away at the polls. Voters who do not bring ID to the polls can vote using a standard provisional ballot.

**Mail Ballot Overview:** Any otherwise qualified Rhode Island voter may vote by mail ballot in the following circumstances:

1. A voter within the State of Rhode Island who is incapacitated to the extent that it would be an undue hardship to vote at the polls because of illness, mental or physical disability, blindness or serious impairment of mobility.
2. An elector who is confined in any hospital, convalescent home, nursing home, rest home, or similar institution, public or private, within the State of Rhode Island. <http://www.elections.ri.gov/voting/nursing.php>.
3. An elector who will be temporarily absent from the state because of employment or service intimately connected with military operations or who is a spouse or legal dependent residing with that person, or a United States citizen that will be outside of the United States. (Please Note: any voter qualified to vote a category 3 mail ballot will also be allowed to cast a mail ballot pursuant to the Uniformed and Overseas Citizens Absentee Voting Act "UOCAVA Act" <http://sos.ri.gov/elections/voters/overseas/>).

4. An elector who may not be able to vote at his or her polling place in his or her city or town on the day of the election (see “No Excuse Mail Ballot Voting” below).

All mail ballots must be received by the State Board of Elections at 50 Branch Avenue Providence, R.I. 02904 by 8:00 P.M. the night of the election.

**No Excuse Mail Ballot Voting:** Rhode Island now allows “no excuse mail ballot voting”. If you may not be able to get to the polls on Election Day, you can fill out a mail ballot application and receive a mail ballot.



#### More on voting by mail:

- Applying for a Mail Ballot <http://www.elections.ri.gov/voting/applymail.php>
- Emergency Mail Ballots <http://www.elections.ri.gov/voting/emergency.php>
- Military and Overseas Voters <https://www.sos.ri.gov/> and choose the elections and voting tab.

**Elections Publications:** The Rhode Island Department of State prepares many elections-related publications, including a guide for candidates and elections calendars. When published, you can find a copy online at their website: <https://www.sos.ri.gov/> and choose the elections and voting tab.





---

## Department of Public Works

Jeffrey M. McCormick, P.E., Director

200 Clear River Drive, Oakland, RI 02858

Phone: 401-568-4440 Fax: 401-568-9469

[dpw@burrillville.org](mailto:dpw@burrillville.org)

Hours: Monday - Friday 6:30 a.m. to 3:00 p.m.

---

### **Burrillville DPW Office/Garage**

The Town of Burrillville Department of Public Works has moved into the new facility located at 200 Clear River Drive, Oakland RI 02858. The Municipal Fuel Depot at Union Avenue and salt shed will remain intact and active for a few more years. The Union Avenue site's potential uses will be evaluated and determined by the Town Council in the future.



### **Town Senior Transportation**

The Town of Burrillville Department of Public Works offers a senior transportation service for eligible residents of Burrillville. To be eligible for this service, Burrillville residents must be 62 years old or older or totally disabled. The minibus operates on a regular schedule and will pick up any eligible Burrillville resident upon request. The schedule is as follows:

- Mondays, Tuesdays and Thursdays – car and driver is available for doctors' appointments between 9 a.m. and 2 p.m.
- Wednesdays – a mini-bus available for grocery shopping trips to the Village IGA Marketplace in Pascoag
- Fridays – mini-bus is available for scheduled trips for up to 12 people for excursions or shopping trips around the state

This bus service is available on a first come, first served basis, and is free of charge to Burrillville residents.

***Please call Kelly at 568-4440 ext.201 with any questions or to schedule the minibus.***

***Alternately, all residents can call RIPTA Flex Service for trips within designated areas in Town or North Smithfield. Call 1-877-906-3539 (fares apply)***

### **Maintenance Projects**

The Town of Burrillville Department of Public Works continues to work on regular maintenance projects of street sweeping, roadside brush cutting, tree trimming, catch basin cleaning, roadway repairs and drainage improvements.

- **DPW Small Projects** – Various improvements throughout Town, handicap spaces at Assembly Theater, Shade structure Gonyea Park, improvements at Whipple Avenue recycle center.
- **DPW Summer Crew** – The summer crew will be cutting grass, weed wack-ing and collecting trash at all of the Town parks and recreational facilities.



## **Construction Projects**

Construction projects also to be completed or undertaken this construction season:

- **Brook Road Reclamation and Repaving, Harrisville** – Drainage improvements and reclamation and repaving of roadway.
- **Lake Drive Drainage Improvements.** This project includes installing drainage collection structures to prevent flooding.
- **Whipple Avenue and Section of Cherry Farm Road** - Milling and pavement overlays to improve roadway surface and direct storm water.
- **Harrisville Village Phase II** – Design will be completed this summer and bidding will occur this fall. The project includes drainage improvements, sidewalks curbing and road reconstruction.
- **Pascoag Main Street Park** - The DPW will be completing the small park area adjacent to Well-One in downtown Pascoag. Wall reconfiguration, plantings and historic placards to be included.
- **Police Shooting Range, Pascoag** – Located in the Buck Hill management area, this project was started last fall and we hope to complete the project by 2023.
- **Hauser Field Infield Improvements** – This project is a replacement of the large softball field infield. Project will be bid in April, construction in May/June
- **Burrillville Middle School Practice Field** - This project will be bid late spring for summer construction.
- **Neighborhood Projects** – Small drainage improvement and road improvement projects throughout Town.

## **DPW Engineering Projects**

The Director of Public Works has been working with consultants on numerous future construction project designs, feasibility studies, construction documents, technical specifications, permits and various annual reports.

- 2023 road reclamation design/construction package
- Pavement Management Program – ongoing road rating system
- RIPDES (RI Pollutant Discharge Elimination System) annual storm water reporting
- Landfill groundwater and gas monitoring

- Harrisville Dam Repair Design, Regulatory requirement spillway design ongoing.
- Wallum Lake Dam - Memo of Agreement on lake elevation ongoing, hydraulic design and dam discharge options ongoing, flooding of Route 100 preventative options ongoing.
- Recreation Masterplan – All Town recreational facilities and planned facilities
- Rock Avenue drainage project – pending easement agreement.
- Municipal Fuel Depot at Police Station – New facility to replace Union Ave fueling Depot.
- Recreation Center expansion (Lodge) in Pascoag, playground equipment, parking and natural walking path.

### **State Projects**

The DPW is coordinating with the RIDOT regarding the schedules, design and construction of State projects within the Town of Burrillville. These projects include:



- RIDOT, Mohegan Bridge Replacement, Ongoing.
- Victory Highway, pending RIDOT prioritization.
- Crosswalks on State Roads – Mowry/Route 98 (Harrisville Main), Maple Street/Route 107 (Chapel Street, Assembly entrance/Route 107 (East Avenue) – pending



---

**DPW, Refuse & Recycling**  
Andrea Hall, Recycling Coordinator  
401-568-4440 Ext. 12  
[ahall@burrillville.org](mailto:ahall@burrillville.org)  
[www.burrillville.org/refuse](http://www.burrillville.org/refuse)

---

**Rejected Loads on the Rise at Rhode Island Resource Recovery**

Burrillville's current recycle rate is 27.1%. Residents continue to do a great job, however there are many items still ending up in recycling carts that are not recyclable and are causing recycling loads to be rejected. Recycling loads that are contaminated or contain prohibited items cost the Town \$250, and all the contents of that load must be landfilled at \$57/ton. An average recycling load from Town weighs about 5 tons, meaning a rejected load costs the Town about \$520.

While nobody's perfect and mistakes happen, please do your part to keep the following items (all seen recently in the recycling) OUT of your recycling bin:

**Food, leaf and yard debris, construction and demolition debris, clothing, textiles, tarps, plastic bags, recyclables IN plastic bags, diapers, tires, chains, cables, wires, ropes, hoses, household hazardous waste, propane tanks, scrap metal and paint.**

Please take the time to review the list of accepted items and contact the Recycling Coordinator with any questions. For any questions on the Do's and Don'ts of recycling in Rhode Island, please visit [www.RecycleTogetherRI.org](http://www.RecycleTogetherRI.org) or call the Town's Recycling Coordinator at 568-4440 x 12 or [ahall@burrillville.org](mailto:ahall@burrillville.org).

Thank you for helping to Keep Burrillville Beautiful! Thank you for recycling!

**WEEKLY SET OUT REMINERS**

- Plastic bags are **NOT** allowed in the recycle cart. No bags, no bags of bags, and no bagged recyclables.
- Please keep carts 3 feet apart and at least 3 feet from obstacles such as mailboxes, cars, etc.
- Lids must be fully closed.

**UPCOMING RECYCLING EVENTS**

**Burrillville Earth Day** - Burrillville's Earth Day is April 23<sup>rd</sup>, however the annual Earth Day Cleanup is going to be a DIY event again this year! Participants will schedule an appointment with the Recycling Coordinator to pick up gloves, bags, T-shirts and to sign up for a specific location to collect litter. Participants have until April 30th to complete their cleanup. Once their cleanup is complete, they will again contact the Recycling Coordinator to indicate where the bags were left, and Public Works will collect it. Community Service Certificates will be provided if needed. Free raffle ticket to all participants! Raffles will be drawn May 2nd and winners will be notified via phone or email. Contact Andrea Hall for more information or to sign up. Join us to help Keep Burrillville Beautiful!

**ZAP50** - The Public Works and Parks and Recreation Departments are partnering with Keep Blackstone Valley Beautiful to participate in the 50<sup>th</sup> Anniversary of ZAP the Blackstone. The goal of ZAP50 is to celebrate again and replicate the participation the original ZAP event had in 1972, when 10,000 volunteers came out on one day to clean up the Blackstone Valley. The main event will take place on August 27<sup>th</sup>, however Burrillville participants will have the opportunity to participate by cleaning our roadways and riverbanks for the 2 weeks leading up to the main event. Burrillville's participation will be run like our Earth Day Cleanup...a DIY event where supplies are provided and trash is collected by contacting the Recycling Coordinator. Reach out to Andrea Hall for more information or to sign up. For history or more info on ZAP the Blackstone, volunteers can reach out to Donna Kaehler at Blackstone Valley Tourism Council 401-724-2200 or [keep@tourblackstone.com](mailto:keep@tourblackstone.com).

**Eco-Depot Household Hazardous Waste Event** - Event runs from 8:00am-12:00pm on May 21<sup>st</sup> at the Department of Public Works. This is a drive thru, drop off event. Residents should call RIRRC at 942-1430 x 241 to make an appointment. We will be collecting non-perishable food donations for the Burrillville Weekend Snack Pack Program at this event. Contact Andrea Hall with questions.

**Electronic Waste Collection** - Two separate events are scheduled on May 14<sup>th</sup> and October 22<sup>nd</sup> from 9:00am-12:00pm at the Department of Public Works. Electronic waste includes computers, monitors, laptops, and TVs. This is a drive thru, drop off event. No appointment necessary. We will be collecting non-perishable food donations for the Burrillville Weekend Snack Pack Program at this event. Contact Andrea Hall with questions.

**Green Festival** - A community event offered by the Pascoag Utility District and Department of Parks and Recreation that runs from 10:00am – 2:00pm on September 10th at the Stillwater Mill Complex. Rain date is September 24th. Approximately 1000 attendees participate each year and visit with Green Vendors, learn about energy conservation and recycling, and have the opportunity to enjoy food and beverages prepared by a local food truck. For more information on this year's Green Festival contact Desarae Dolan at the Pascoag Utility District: 401-568-6222 x223 or [ddolan@pud-ri.org](mailto:ddolan@pud-ri.org) or Andrea Hall.

**Field Trips** - Visit RIRRC's website for virtual field trips and tours of the landfill to see how the single stream sorting process separates our Town's recyclables. [www.rirrc.org/education-program-support/virtual-tours](http://www.rirrc.org/education-program-support/virtual-tours)

**\*Event dates and times are subject to change due to COVID\***

<b>Recycle Coordinator</b>	401-568-4440 x12	<a href="mailto:ahall@burrillville.org">ahall@burrillville.org</a>
<b>Waste Management</b>	1-800-972-4545	
<b>RIRRC</b>	401-942-1430	<a href="http://www.rirrc.org">www.rirrc.org</a>

**Delays Due to Weather Events or Holidays** - There are three ways to stay up to date on changes/delays:

1. Visit the Refuse & Recycling webpage
2. Check the Refuse and Recycling Voicemail Message
3. Sign up to receive Town Alert emails on the main page of the Town website [www.burrillville.org/subscriber](http://www.burrillville.org/subscriber)

**As soon as Waste Management notifies the Town of any issues causing a delay or cancellation, that information is made available to residents. Information is updated immediately even when a decision is made after normal working hours, including over the weekend.**

#### **Proper Weekly Set Out -**

- Trash and recycling carts are the property of the Town. No markings are permitted on the cart other than in the white address label on the top of the lid
- Place one cart on each side of the driveway **or** place carts 3ft apart from one another and from other obstacles.
- Place carts no more than 3ft away from the curb or road edge
- Arrows on the cart lid must face the street
- Cart lids must be fully closed with no material sticking out
- No material may be placed on top of the cart lid
- Residents are allowed one BLACK lid Town owned cart for trash, and one YELLOW lid Town owned cart for recycling
- Place trash and recyclables curbside no more than 24 hours before and no later than 7:00 AM on your scheduled collection day
- Excess trash can be placed next to the cart in a Town approved Overflow Bag
- Excess recycling can be brought to the Whipple Ave Facility and placed in the Mixed Recycling dumpster

#### **Recyclable Items Accepted in the YELLOW Lid Recycling Cart -**

- Milk & juice cartons
- Juice boxes (juice pouches and straws are not accepted)
- Glass containers
- Plastic containers (up to 5 gallons)
- Metal and aluminum cans, metal lids, foil & pie plates
- Mixed paper, newspapers and inserts
- Thin cardboard –cereal/pasta boxes, tissue boxes etc. **(No refrigerated containers: beer, soda or frozen food boxes)**
- Corrugated cardboard (must be flat, cut into pieces that fit loosely in cart, not larger than 3' x 5')
- Pizza boxes that are not greasy

Empty & rinse all recyclables. Replace plastic caps and trigger sprays. Place recyclables loose in the cart. **No plastic bags in your recycle cart.**

**Cart Maintenance** - Residents are responsible for periodic cleaning/disinfecting carts, properly storing carts when not in use, and cart replacement due to normal wear and tear. Contact the Recycling Coordinator for repairs to cart wheels, axles, lids and hinge pins.

**Exchanging Carts** - Residents can exchange their 65-gallon Town owned trash cart for a larger 95-gallon cart for a onetime charge of \$50. 65-gallon recycling carts can be exchanged for a larger 95-gallon recycling cart for no fee. Cart(s) to be exchanged must be clean and in good condition. A \$15 administrative charge will be assessed if the Town delivers and exchanges the cart(s). Residents may exchange their 65-gallon carts for smaller 35-gallon carts for no fee. A \$15 administrative charge will be assessed if the Town delivers and exchanges the cart(s). No administrative charge will be assessed if the resident exchanges the cart(s) at the Department of Public Works. Exchanged carts are subject to availability.

**Overflow Bags** - Residents with excess trash can purchase Town Overflow Bags at DPW and IGA. Bags are \$3 each and are sold in sleeves of 5 of IGA. Residents can purchase single bags at DPW.

**What to do If Trash/Recycling was not Collected** - Contact Waste Management at (800) 972-4545.

### **Whipple Ave. Recycling & Compost Facility**

**Hours:** Whipple Ave is open every Wednesday & Saturday from 9:00 AM TO 1:00 PM, weather permitting.

**Proof of Residency** is required to use the Whipple Ave Facility.



### **Items ACCEPTED at the Whipple Ave. Recycling & Compost Facility**

**Christmas Trees** - First two Wednesdays and Saturdays in January from 9:00 AM to 1:00 PM. Trees must be cleaned of all ornaments and tinsel. No plastic bags permitted.

**Clothing & Textiles** - Includes items suitable for reuse and items to be processed as rags. Place in Clothing & Textile Bin at The Whipple Ave Recycling & Compost Facility.

**Cardboard** - Cardboard of all sizes including pieces larger than 3'x5' can be placed in the cardboard dumpster.

**Excess Recyclables/Single Stream Recyclables** – Excess recyclables that would normally go in your yellow topped cart.

**Mattresses/Box-Springs** - No futon mattresses, mattress pads, or toppers. No severely damaged, wet, twisted, frozen or soiled mattresses.

**Metal (scrap)** - Bicycles, rims, lawnmowers (drain oil/gas), grills (cleaned), exercise equipment, pipes, metal cabinets, and other miscellaneous scrap metals.

**Non-Freon Appliances** - Stoves, washers, dryers, dishwashers.

**Plastic (Rigid)** - Children's toys, hose reels, lawn furniture, etc. Only items **composed entirely of rigid plastic** are recyclable in the Rigid Plastic container at Whipple Ave. No metal, no motors, no batteries.

**Tires** - Must be off the rim. Limit of 4. No oversized tires.  
**Yard Waste** - brush must be 3" diameter or less and cut in 5' lengths or less. Place leaves in paper bags only.

### **Disposal of Items Not Accepted in Curbside Carts**

**Appliances/White Goods** - Appliances are collected twice per month for a fee of \$21 per item. Appliances include washers, dryers, stoves, refrigerators, air conditioners etc. Call Waste Management to schedule a pickup. Waste Management will not refund residents for items scheduled for pickup that disappear prior to the collection date. Non-Freon appliances can be brought to Whipple Ave for no fee. Local metal recyclers advertising in the Bargain Buyer will often pickup Freon appliances at no charge.

**Bulky Items** - Bulky items are collected twice per month for a fee of \$18 per item. A bulky item is an item of solid waste that is not recyclable and is too large to fit inside a bag placed inside the Town provided cart. Examples include couch, chair, desk, rugs, carpets, etc. Call Waste Management to schedule a pickup. Waste Management will not refund residents for items scheduled for pickup that disappear prior to the collection date. Residents with a large amount of bulky items can utilize the Bagster Program. Contact the Town's Recycling Coordinator for information on Bagster. Bulky items left curbside for a period of more than one day are in violation of Section 22-43 of the Solid Waste Ordinance and may be subject to fines and penalties.

**Books** - Books that are in good condition can be donated to Savers or Salvation Army.

**Compact Florescent Light Bulbs (CFLs)** - Bring to an Eco-Depot, or check your local hardware store.

**Computer Ink Cartridges** - Bring to DPW to be donated to the Burrillville Lions.

**Construction/Demolition Debris** - Anything that was or could be attached to your home is considered construction debris. Examples include windows, shower doors, wood, bathtubs, toilets, sheet rock etc. Bring to RIRRC, hire a private hauler, or use the Bagster program.

**Excess Waste Due to a Large Cleanout or Renovation** - Hire a private hauler or use the Bagster Program. Contact the Town's Recycling Coordinator for information on Bagster bags.

**Hazardous Electronic Waste (E-waste)** - TV's, computers, monitors and laptops – bring to one of five state collection including RIRRC. Call RIRRC for more information and hours.

**Hazardous Household Waste** - chemicals, fertilizers, propane tanks, oil based paint, pool chemicals, gasoline, transmission fluid, etc. - Bring to Eco-Depot. Contact RIRRC to schedule an appointment.

**Medical Syringes** - Place in hard plastic container (laundry detergent bottle, bleach bottle etc.) seal cap tightly with duct tape and place container in the trash.

**Plastic Bags** - Tie in a knot and drop off at any ReStore bin, including Brigido's IGA.

**Pellet Bags** - Drop off at any ReStore bin, including Brigido's IGA.

**Prescription Drugs** - Bring to Burrillville Police Department. Do not flush down the toilet.

**Styrofoam** - Bring to RIRRC. Foam must be clean, dry and bagged in clear or translucent bags. No spongy foam (#1 Fan fingers etc.) and no packing peanuts.

**Used Cooking Oil** - Bring to RIRRC.

**Used Motor Oil, Oil Filters, Car Batteries** - Dispose of at DPW during normal business hours. 5-gallon limit for motor oil.



## TOWN OF BURRILLVILLE Recycling Reminders

### ITEMS ACCEPTED IN THE YELLOW LID RECYCLE CART:



### ITEMS **NOT** ACCEPTED IN THE YELLOW LID RECYCLE CART:



**CONTAMINATED**



**TEXTILES**



**HOT & COLD**



**HYBRIDS**



**OTHER PLASTICS**



**HAZARDS**

Questions? Refuse & Recycling 568-4440 x 12 or [ahall@burrillville.org](mailto:ahall@burrillville.org)

### Refuse & Recycling Holiday Collection Schedule

When your regular collection day falls on a holiday, **trash and recyclables are delayed by one day for the remainder of the week.** Monday's trash is collected on Tuesday, Tuesday's on Wednesday etc.

### 2022 Holidays that delay Trash & Recycling collection

Martin Luther King, Jr. Day	Monday, January 17 <sup>th</sup>
Memorial Day	Monday, May 30 <sup>th</sup>
Independence Day	Monday, July 4 <sup>th</sup>
Victory Day	Monday, August 8 <sup>th</sup>
Labor Day	Monday, September 5 <sup>th</sup>
Columbus Day	Monday, October 10 <sup>th</sup>
Veteran's Day	Friday, November 11 <sup>th</sup>
Thanksgiving Day	Thursday, November 24 <sup>th</sup>
Christmas Day (observed)	Monday, December 26 <sup>th</sup>



---

## Parks & Recreation

Andrea Hall, Director; Carol Conway, Administrative Aide  
401-568-9470

[parksandrec@burrillville.org](mailto:parksandrec@burrillville.org)

Find us on Facebook

---

### ANNUAL EVENTS

#### Burrillville Earth Day

The Annual Earth Day Cleanup is going to be a DIY event again this year! Participants will schedule an appointment with the Recycling Coordinator to pick up gloves, bags, T-shirts and to sign up for a specific location to collect litter. Participants have until April 30th to complete their cleanup. Once their cleanup is complete, they will again contact the Recycling Coordinator to indicate where the bags were left, and Public Works will collect it. Community service certificates will be provided if needed. Free raffle ticket to all participants! Raffles will be drawn May 2nd and winners will be notified via phone or email. Contact Andrea Hall for more information or to sign up. Join us to help Keep Burrillville Beautiful!



#### ZAP50

The Public Works and Parks and Recreation Departments are partnering with Keep Blackstone Valley Beautiful to participate in the 50<sup>th</sup> Anniversary of ZAP the Blackstone. The goal of ZAP50 is to celebrate again and replicate the participation the original ZAP event had in 1972, when 10,000 volunteers came out on one day to clean up the Blackstone Valley. The main event will take place on August 27<sup>th</sup>, however Burrillville participants will have the opportunity to participate by cleaning our roadways and riverbanks for the 2 weeks leading up to the main event. Burrillville's participation will be run like our Earth Day Cleanup...a DIY event where supplies are provided and trash is collected by contacting the Recycling Coordinator. Reach out to Andrea Hall for more information or to sign up. For history or more info on ZAP the Blackstone, volunteers can reach out to Donna Kaehler at Blackstone Valley Tourism Council 401-724-2200 or [keep@tourblackstone.com](mailto:keep@tourblackstone.com).



#### Family Fair

The Family Fair is back! This year's fair is scheduled for June 18<sup>th</sup> with a rain date of June 25<sup>th</sup>. The fair will once again be held at the Stillwater Mill Center and will be a collaboration between the Parks and Recreation Department, the Farmer's Market, and the Jesse Smith Memorial Library. The Fair will feature refreshments, games & activities, giveaways and informational booths. There will be food trucks and Anabel's Ice Cream and plenty of fun for the whole family! Participate in our raffle (tickets \$1 each) to benefit the Burrillville Weekend Snack Pack Program. Visit our Facebook page or contact Parks and Recreation for more information.

## **SENIOR SERVICES**



The Parks and Recreation Department along with a small army of amazing volunteers will continue to assist Burrillville's aging population as we have done throughout the pandemic. In addition to free classes at our Recreation Center, we are currently assisting with groceries, small errands, and prescription delivery among many other things.

Please reach out to Andrea Hall if you are in need of any senior services. We are happy to listen and want to help!

### **Burrillville Village Pilot Program**

The Village Common of Rhode Island and Burrillville Parks & Recreation Senior Services are working with a committee of Burrillville volunteers on a Village pilot program to provide free assistance to Burrillville's aging population. Village assistance includes rides from volunteers who have been vetted and trained, errands such as grocery pick-ups, prescriptions, and the like, help with electronic devices, VCRs TVs, smart phones, IPADs, computers, etc. and household chores such as changing light bulbs, fall clean-ups and organizing. Contact Andrea Hall for more information or to volunteer.

## **THE BECKWITH/BRUCKSHAW LODGE (COMMUNITY RECREATIONCENTER)**

### **Rent the Lodge**

Need a place to hold a fundraiser, birthday party, etc.? The Community Recreation Center has reopened for rentals on the weekends. For more information contact the Parks & Recreation Department.

### **Program Expansion**

The Department is always looking to expand programming. If you are an instructor interested in teaching or if you'd like more information about offering spring programs contact the Parks & Recreation Department.

### **NEW "FREE" SENIOR PROGRAMS:**

Advance Ukulele	Lodge
Essentrics	Lodge
Senior Yoga & Flexibility	Lodge
Strength Training	Lodge
Ukulele Music Therapy	Lodge

### **ONGOING PROGRAMS:**

Multi-Sport	A.T. Levy , Callahan and Steere Farm Schools
Yoga	Lodge
Safe Sitter Program	Burrillville Middle School
Zumba	Lodge
Burrillville Weekend Snack Pack	Lodge
Sunshine Club	Lodge

#### **Safe Sitter Class**

Tuesday, April 19<sup>th</sup> from 8:00 am to 2:00 pm at the Burrillville Middle School Media Center for students ages 11-14. Learn safe childcare practices, good babysitting skills, and how to be a responsible adolescent. Instructors from Lifespan Community Health Institute are enthusiastic and committed to teens. Most are registered nurses and all are certified to teach the safe sitter class. Instruction for this 1-day program includes Babysitting as a Business, Preventing Injuries, Success on Job, Injury Management, Child Care Essentials, Safety for the Sitter, Preventing Problem Behavior, Behavior Management, Care of a Choking Infant/Child, and Rescue Breathing. Cost: \$50, includes all materials. Advance registration is first come, first serve. For more information or to register for the class, please call (401) 444-8088 and ask the operator for Jeanette Nessett.



### **ONGOING VOLUNTEER OPPORTUNITIES**

#### **Sunshine Club**

The Sunshine club meets once per month at the Lodge to make homemade floral arrangements, crafts and cards to share at the local nursing homes to celebrate any patient's upcoming birthdays. There is no cost to participate and all needed supplies are provided. If you are interested in being part of spreading some sunshine to our Burrillville community members, please contact the Burrillville Parks & Recreation Department.



## **Burrillville Weekend Snack Pack Program**

BWSP is a not-for-profit joint effort between the Parks & Recreation Department, Burrillville Lions Club, Berean Baptist Church and the Jesse Smith Memorial Library to provide weekend food for the needy. Currently there are 41 children and an additional 7 adult families who are receiving the weekly food bags. The average monthly cost is approximately \$1200. Food or monetary donations can be dropped off to the Parks & Recreation Department. Please make check donations payable to the Burrillville Weekend Snack Pack Program. Non-perishable kid friendly food (macaroni & cheese, granola bars, juice boxes, snacks, etc.) are greatly appreciated. Packing sessions are held at the Beckwith-Bruckshaw Lodge every 6-8 weeks. For more information on how you can volunteer or a complete list of suggested donation items, please contact the Parks & Recreation Department.



## **SUMMER PROGRAMS**

**Summer Programs to be announced!** Watch for the Parks & Recreation Summer Program flyer in May for more information regarding summer programs including Multi-Sport, Pickleball, and Cornhole, plus our ongoing programs at the Lodge.

## **PARK NEWS:**

**Hero Park** – Located adjacent to the Burrillville Police Department, the park has been recently renovated to include a shade structure with picnic tables, a parent/child swing, baby swings, big kid swings and several other new pieces of play equipment, including one for crawlers. A poured in place rubber walkway was installed last spring.

**Remington Park** – Located in Oakland at the old Remington Lumber site on Victory Highway, the park offers a street hockey rink and pickle ball court, as well as a short bike path to the river with a canoe launch and fishing area.

**High Street Park** – Located across from Bell Plaza in Pascoag, the park offers a shade and spot to picnic.

**Bike Path-** Run, walk, bike, or rollerblade on the bike path! Our bike path is a 1.2 mile off-road bike path that runs along the former New York, New Haven and Hartford Railway and connects the villages of Harrisville and Pascoag. The paved path has entrances along Mowry Street and Eastern Avenue. At about the halfway point of the bike path there is a paved path with benches and picnic tables that leads towards Duck Pond. The paved path ends at a small cul-de-sac, and a dirt path continues up over a small hill toward the pond.

**Skateboard Park:**

# **BURRILLVILLE SKATE PARK**

**This is YOUR Park, please take care of it and keep it clean.**

**HOURS OF OPERATION 9:00 a.m. to DUSK**

**The Park is closed when the gate is closed and locked**

**THIS IS AN UNSUPERVISED PARK. THE TOWN OF BURRILLVILLE WILL NOT ASSUME RESPONSIBILITY FOR INJURIES.**

**USE OF THIS PARK IS AT YOUR OWN RISK.**

- **Skateboarding, rollerblading, scooter riding and BMX bicycle riding can be a HAZARDOUS ACTIVITY that may result in SERIOUS INJURY. The use of personal safety gear and equipment (helmets, elbow pads, kneepads, and protective clothing) is strongly recommended.**
- **The use of a protective helmet is mandatory for anyone 15 years of age or younger.**
- **No use allowed when equipment is wet or icy. No use allowed during lightning storms.**
- **Please be respectful and courteous of other users and neighbors.**
- **Abrasive, threatening or obscene language is prohibited.**
- **Alcohol, Tobacco, and Drugs are prohibited.**
- **If you see someone acting inappropriately, be a mentor and a leader and share tips on skate park etiquette.**
- **No competitive or demonstration events are allowed without prior approval of Parks and Recreation Department.**
- **Keep the park clean – No glass containers inside the fenced areas. Please use the Town recycling and rubbish containers. No littering allowed!**

**In case of emergency – Police/Fire Medical: Dial 9-1-1**

**Report vandalism, suspicious or criminal activity to:**

**Police Department 568-6255 or Parks and Recreation Department 568-9470**

The skateboard park located on Chapel Street is open daily from 9am until dusk. Helmet, knee pads and elbow pads required! Please adhere to all Rules & Regulations posted at the park.



For a complete list of all parks please visit our website.

## **LEAGUE CONTACT INFORMATION**

Junior Hockey	<a href="http://www.bjhl.org">www.bjhl.org</a>
Youth Basketball	<a href="http://www.byba.org">www.byba.org</a>
Youth Soccer	<a href="http://www.bgysa.org">www.bgysa.org</a>
Men's Softball	FB: Burrillville Men's Softball League
Little League	<a href="http://www.burrillvillelittleleague.org">www.burrillvillelittleleague.org</a>
Figure Skating	FB: Burrillville Figure Skating Association Facebook
Youth Football & Cheer	<a href="https://burrillvillepatriots.com">https://burrillvillepatriots.com</a>
Burrillville Girls Softball	FB: Burrillville Girls Softball League



### **CALLING FOR VOLUNTEERS:**

Are you looking for an opportunity to volunteer for your community? Volunteers are always needed to assist with our special events. Please contact the Parks and Recreation Department if you'd like to help.



### **SIGN UP FOR RECREATION NEWS:**

Subscribe to receive Recreation Department News by visiting [www.burrillville.org](http://www.burrillville.org) and clicking on 'E-Subscribe' tab on the left hand side of the page. Click on 'Parks and Recreation' under News and Announcements to sign up for email notifications regarding programs and events sponsored by the Parks and Recreation Department or follow us on Facebook.



---

**Spring Lake Beach**  
Judy Lopez, Manager  
50 Old Hillside Drive, Glendale  
401-568-9474  
[jlopez@burrillville.org](mailto:jlopez@burrillville.org)



**Spring Lake Beach will open for the season on  
Saturday, May 28<sup>h</sup> at 10:00 a.m.**

Admission for opening day is free and resident family passes will be available for purchase with proof of Burrillville residency. Season passes are available for Burrillville residents only: \$30.00 per family pass or \$20.00 for an individual pass. Included in the pass is a parking permit for the resident lot.

General admission for Burrillville residents is \$4.00 per person. Non-resident is \$7.00 per person. Groups of 15 or more scheduled in advance are \$2.50 for residents and \$5.00 for non-residents. ***Free admission for up to 3 children per family ages 3 & under when accompanied by an adult. This is not applicable to groups.***

**Hours of Operations (Weather Permitting):**

**Open Weekends Only:** Saturday, May 28<sup>th</sup> thru Monday, May 30<sup>th</sup> 10:00 a.m.–6:00 p.m.

**Open Daily:** Saturday, June 4<sup>th</sup> thru Sunday, August 28<sup>th</sup> 10:00 a.m.–7:00 p.m.

**Open Daily:** Monday, August 29<sup>th</sup> thru Monday, September 5<sup>th</sup> 10:00 a.m.–6:00 p.m.

The facility offers an arcade, food concessions, restrooms with outdoor showers, new recreation activities, beach shop and picnic tables on a first come, first serve basis. Beach amenities (available for rent) including children's kayaks, adult kayaks, children's turbo paddle boats, paddle boards, inflatable water slide and inflatable bounce house.

During hours of operation, the facility has full time lifeguard staff.

**\*Please Note\*:**

**\*No grills or alcohol allowed on the beach.**

**\*No pets allowed on Spring Lake Beach property.**

\*The Champlin Recreation Hall located at the facility is available for rent during the season rain or shine. Patrons renting the hall are allowed to bring their own grill. Start time for hall rentals are 11:00 a.m.– 4:00 p.m. More information available on the Town website site [www.burrillville.org](http://www.burrillville.org)

Hall bookings are now available by contacting the Parks & Recreation Department at 568-9470 or via e-mail at [ParksandRec@Burrillville.org](mailto:ParksandRec@Burrillville.org).

**\*\*BEACH AMENITIES/HOURS/RENTALS are subject to change due to COVID\*\***



---

## Police Department

Colonel Stephen J. Lynch, Police Chief  
Wallace F. Lees Public Safety Complex  
1477 Victory Highway, P.O. Box 231, Burrillville, RI 02830  
Phone: 401-568-6255 Fax: 401-568-9499  
[burrillvillepolice@burrillville.org](mailto:burrillvillepolice@burrillville.org)

---

**WEBSITE AND FACEBOOK:** If you are on Facebook, please take a moment to look us up and “like” our page. Our website: [www.burrillville.org/police](http://www.burrillville.org/police) is the place to go for general information about programs and happenings as well as access to many downloadable forms.

### **BURRILLVILLE MUNICIPAL COURT:**

- Held 1<sup>st</sup> & 3<sup>rd</sup> Monday of each month (excepting holidays)
- Contact information: 401-568-9494 x 1 – [lrabideau@burrillville.org](mailto:lrabideau@burrillville.org)
- Website – [www.burrillville.org/municipal-court](http://www.burrillville.org/municipal-court)
- 24 hour payment box at police station lobby

**E-COMMERCE SAFE ZONE:** In order to provide a safe area for any transactions originating from the internet, the police department provides two safe locations on the grounds of the Wallace Lees Public Safety Complex:

- South front parking lot, adjacent to the impound fence.
- Inside the front lobby of the police station.

**CODE RED SYSTEM:** Check to see if your information is correct for our reverse calling system, Code Red. This system is utilized in emergency situations as well as for occasional general information. Go to the Burrillville website at [www.burrillville.org](http://www.burrillville.org) and you will find the Code Red link under the “Residents” tab on the top of the page. The instructions are easy to follow. There is also a link to Code Red under the “Sign Up” tab on our Facebook Page.





**B-SAFE PROGRAM:** (BURRILLVILLE SECURITY & AWARENESS FOR THE ELDERLY) The objective of this program is to make the police department aware of elderly, handicapped, or medically fragile individuals who live in Town and may need some extra assistance. This form can be picked up at Burrillville Police headquarters any time, 24 hours a day, or printed from the “downloadable forms” section of our website: [www.burrillville.org/police](http://www.burrillville.org/police).

**NOTARY SERVICE** is available at the police department 24 hours a day for no charge.

**VIN CHECKS** are required for used vehicle purchases 2001 model year or newer which have an out-of-state title, or when you are transferring a vehicle registration from another state:

- 10 – 10:30am and 1 – 1:30pm – 7 days a week
- Bring vehicle, original title, and \$10 cash or check

**RECORD CHECKS & FINGERPRINTS** If you need a national record check with fingerprints, call this department at 568-6255 for more information and to make an appointment with a detective. Note that fingerprints being done for school department employees (including sub-contractors of the school department such as bus drivers/monitors and cafeteria workers) cost \$30. Also, please note that NO record checks of any kind are done for juveniles.

**ALARM ORDINANCE** Don't forget to register your house alarm with the police department. You can download an alarm registration form from the website or pick one up at the police station any time.

**IT IS ALMOST YARD SALE SEASON** A friendly reminder that posting signs on utility poles, trees, and Town property is **prohibited** in Burrillville. For the safety of the telephone and electric company workers, our citizens, and others travelling our roads, Burrillville Police officers will be monitoring and enforcing these ordinances.

**MURPH PROGRAM:** The Burrillville Police Department created the Murph Program as a means of registering special needs residents of all ages into the police department database. This voluntary program allows loved ones to register the special needs individual by filling out a questionnaire designed to assist the police department by identifying the individual's needs—social, emotional, and physical—when it comes to understanding and interacting with members of law enforcement. Call the police department for more information on this program that is dedicated to identifying and protecting our community's most vulnerable residents.

***FOR QUESTIONS ON THESE OR ANY OTHER PROGRAMS AND SERVICES OFFERED BY THE BURRILLVILLE POLICE DEPARTMENT, DON'T HESITATE TO CALL 401-568-6255 OR CHECK THE WEBSITE AT [WWW.BURRILLVILLE.ORG/POLICE](http://WWW.BURRILLVILLE.ORG/POLICE).***

---

## Burrillville Emergency Management Agency (EMA)

Glen Biddiscombe, Director

(401) 641-0898

[gbiddiscombe@burrillville.org](mailto:gbiddiscombe@burrillville.org)

---

*Emergency preparedness is a team sport. Despair is most often the result of ill-preparedness*



### CORONAVIRUS UPDATE

For the latest information residents are urged to visit the RI Dept. of Health web site at [www.health.ri.gov](http://www.health.ri.gov).

#### COVID-19 Vaccine Booster Doses

Everyone age 12 or older who has already received a primary series of COVID-19 vaccine should get a booster dose of COVID-19 vaccine.

Please note that only the Pfizer COVID-19 vaccine is authorized for use by people younger than 18. This means that people age 16 and 17 must choose the Pfizer COVID-19 vaccine for their booster dose.

For more recommendations and information, visit [covid.ri.gov/boosterdoses](http://covid.ri.gov/boosterdoses). For CDC COVID-19 booster dose guidelines, visit CDC's booster web page.

**Be Prepared:** Burrillville EMA asks you to please take the time to prepare or check over your home emergency kit, which needs to have adequate supplies for you and your family to be self-sufficient for 72 hours. Additionally, we remind you to please prepare a family plan. Visit <http://www.ready.gov> for a list of home emergency kit supplies and blank family plan forms.

If you have a medical condition that requires electricity, be sure to have a plan in place should you lose power. Again, we ask that you be prepared to be self-sufficient for 72 hours. Burrillville EMA (BEMA) is available 24/7/365 to provide any assistance that may be needed at (401)-641-0898.

**Social Media:** Residents are encouraged to follow us on twitter (@EMABurrillville) and also to check our Facebook page where notifications and important information will be posted when situations require.

**Code Red Telephone Notification System:** To ensure that your phone number is included on the call down list, or if you would like to add a cell phone number, please visit [www.burrillville.org](http://www.burrillville.org) for further information. This system provides an excellent opportunity for residents to receive important information.

**Rhode Island Special Needs Emergency Registry:** I would like to take the opportunity to invite anyone within the Burrillville community with special needs to register on the RI Special Needs Registry at [www.health.ri.gov/emregistry](http://www.health.ri.gov/emregistry). This secure system allows us to keep track of those who require specialized attention during an emergency. Please sign up today or help out a family member, neighbor or friend.

Any individual, regardless of age, who has a chronic condition, disability, special healthcare need, or may require additional assistance during a time of emergency. Some examples include people who:

- Use life support systems such as oxygen, respirator, ventilator, dialysis, pacemaker, or are insulin dependent;
- Have mobility disabilities and use a wheelchair, scooter, walker, cane, or other mobility device;
- Are visually impaired, blind, hard of hearing, or deaf;
- Have speech, cognitive, developmental or mental health disabilities;
- Use assistive animals or a prosthesis.

Applications are also available by contacting  
BEMA at (401) 641-0898.



**EMA Office & Emergency Operations Center:** The Burrillville Emergency Management office is located within the Burrillville Police Headquarters Complex. When extended emergency conditions exist, the municipal court / community room is transformed to an Emergency Operation Center (EOC) where all management duties including communications, logistics, and documentation are performed. The EOC is also utilized for pre-incident planning involving representatives of all Town departments.

**News:** The Burrillville Emergency Management Agency was awarded a grant for emergency communications upgrades. We are working with the Chief of Police and the Town's Fire Chiefs to plan and implement needed equipment to upgrade the emergency communication issues currently faced by the fire departments. We hope to have the upgrades in place by the end of the year.

**Interested In Learning More About Emergency Management?** Burrillville has an experienced staff of volunteers who respond regularly when called upon to assist during emergency situations. If interested in becoming part of our team, please contact me at any time at 401-641-0898. Please check the EMA page on the Town website for future messages regarding training opportunities. These trainings are for veteran members of our staff along with those new to the agency.

I thank all our volunteers, veterans and rookies alike for your tireless efforts during emergency situations and during Emergency Management activities for the Town of Burrillville, and remind everyone, "Preparedness begins at home."

---

## **Burrillville Addiction Assistance Program**

Brandy Bates, Coordinator  
Wallace Lees Public Safety Complex  
1477 Victory Highway, Oakland, RI  
Call or Text: 401-640-8138  
[bbates@burrillville.org](mailto:bbates@burrillville.org)

---

The Burrillville Addiction Assistance Program, developed in 2018, is an innovative program dedicated to serving the residents of Burrillville who may suffer from, or have family members suffering from, alcohol or drug addiction. The Town of Burrillville, in conjunction with the Burrillville Police Department, will assist those seeking to address their addiction with locating treatment resources, planning for recovery, and finding a new path in life.

**For confidential information, contact Brandy using the contact information above.**

You can also contact us on our Town website at [www.burrillville.org](http://www.burrillville.org), or on our Facebook page: @hangonpainends



---

## **Burrillville Prevention Action Coalition**

Monica A. Blanchette, Coalition Coordinator  
Wallace Lees Public Safety Complex  
1477 Victory Highway, Oakland, RI  
401-710-7996  
[mblanchette@burrillville.org](mailto:mblanchette@burrillville.org)

---

The Burrillville Prevention Action Coalition (BPAC) is a volunteer working task force comprised of individuals who are interested in substance abuse prevention issues in the Burrillville communities. Current coalition members comprise of school, prevention and treatment professionals, youth, parents, law enforcement, fire & rescue personnel, faith community, health care, youth organizations, business owners, media, and local government. All members live and/or work in Burrillville.

BPAC meetings take place monthly. Youth (ages 12-18) coalition meetings take place weekly on Sunday evenings at 5:30 pm. If you are interested in volunteering or want more information, please contact Monica as listed above.

You can also follow BPAC's events and initiatives on Facebook and Instagram

[@BurrillvillePAC](https://www.facebook.com/BurrillvillePAC) or on the webpage at  
[www.burrillvilleprevention.org](http://www.burrillvilleprevention.org).



---

**Animal Control Shelter**  
Kerry Courtemanche, Officer  
131 Clear River Drive  
401-568-9480 Fax: 401-568-9471  
[aco@burrillville.org](mailto:aco@burrillville.org)

Monday 7:00 a.m. to 3:00 p.m., Tuesday - Friday 7:00 a.m. to 10:00 p.m.  
Saturday 7:00 a.m. to 3:00 p.m. (Closed Sundays & Holidays)

---

**Vaccinations:**

RI law requires Rabies vaccination for all dogs, cats, and ferrets. Other vaccines are important too, as there is continued canine parvo and influenza activity in RI. Parvo is a highly contagious virus which is easily transmitted and costly to treat, but can be prevented by vaccinating. Lyme and other tick related diseases are also serious health concerns. Protect yourself and your pets from ticks, and check yourself and your dogs after coming in from outdoors.



Rabies clinics are also held regularly at Tractor Supply, Petco, PetSmart and Rumford Pet Center. See the following links for locations and dates.

- <https://www.shotvet.com/find-a-clinic/>
- <https://www.tractorsupply.com/tsc/cms/petvet>
- <https://stores.petco.com/vaccination-clinics>

Locally, and nationwide, obtaining veterinary care can be difficult. Due to a shortage of veterinarians, technicians, and support staff, animal hospitals and clinics are unable to keep up with current demand. Some facilities have closed, some have reduced hours due to staffing shortages, and many are not able to take on new clients. Throughout the pandemic, hoards of people obtained new pets, flooding veterinarians with new clients. Sadly, veterinary staff have also been frequently treated very poorly by the public for their inability to meet demands, so much so that many have left the field altogether. Please, be kind to veterinary staff. This is as hard for them as it is for you. Please plan in advance for routine services such as regular exams, vaccinations, and spay/neuter. Make your appointments well in advance to ensure availability. If you obtain a new pet, immediately locate a veterinarian that will be able to serve you and get your pet established. Don't wait until you need service to try to locate a veterinarian who can see your pet.

**Reminders:**

- Leash law in effect: All dogs must be leashed when off the property of the owner and under the control of a person capable of handling the dog. This law keeps your pet as well as the public and other pets safe. All dog owners/keepers/handlers are responsible for the actions of, and any injuries or damages caused, by their dog.

- Dog waste ordinance in effect: Owners/handlers are required to clean up after their dogs when off of the owners' property. Dog waste can transmit disease to animals and humans, and can contaminate our water ways. It is unsightly and smelly. Please be responsible and clean up after your pet. It is the right thing to do, and an obligation of being a pet owner.
- 2022 licenses will soon be available and can be obtained at Town Hall with a valid Rabies certificate. All dogs must be licensed by April 30, 2022, and licenses must be renewed annually. A three dog limit is in effect for single family residences, and two dogs per unit in a duplex/apartment/condo/multi-family. Kennel license required exceeding those limits.
- RI Animal Cruelty laws prohibit extended tethering or kenneling of dogs. Tethering is allowed for 10 hours per 24 hour period, and kenneling is allowed for 14 hours per 24 hour period. Only veterinarians and Animal Control officials may authorize a waiver of these limitations. An area free of debris and accumulated feces, potable water at all times, and access to appropriate shelter are required.
- There are specific zoning regulations regarding the keeping of livestock and fowl. This includes any type/size of pot-bellied pig or other swine as well as chickens, ducks, etc. Please contact the zoning office for further information at (401) 568-4300 ext. 130.

**RI law requires cats over the age of six months be spayed/neutered. Low cost services are available.**

- **Salmon River Veterinary**

- ◊ Cats only
- ◊ Multiple mobile locations including at Burrillville Animal Shelter (monthly)
- ◊ \$100 includes spay/neuter as well as Rabies and FVRCP vaccines
- ◊ Register by calling Salmon River Vet at 401-793-0092 or online at [www.rimobilevet.com](http://www.rimobilevet.com).

- **Potter League Spay/Neuter Clinic**

- ◊ Cats and Dogs
- ◊ Additional discounts for feral cats and pit bulls
- ◊ Register by calling 401-369-7297
- ◊ More information on-line at [www.potterleague.org](http://www.potterleague.org)

### **Stray and Feral Cats:**

Please do not feed stray and/or feral cats. You may feel that you are helping, but feeding these cats without taking responsibility for them only contributes to the problem of overpopulation. It is also illegal. RI law designates the feeder of cats the legal owner, and therefore that person is responsible for Rabies vaccination and spay/neuter of those cats. If you are feeding a feral cat or colony, please contact us so that we can discuss performing trap/neuter/release services (TNR). Our ability to perform this service depends on the availability of funds. TNR controls the reproduction of the colony while naturally reducing the population through attrition. You also have the option of trap/neuter/release on your own using the low cost services mentioned above. If you have TNR cats you are caring for, please provide food for brief periods twice daily versus leaving standing food that will attract wildlife to feed as well.

### **Important tips as we all spend more time outdoors:**

- All animal bites must be reported to Animal Control.
- Do not approach stray animals. Please love your own, leave others alone.
- Avoid all contact with wildlife. Rabies continues to be a serious issue in the local wildlife population. Report sick wildlife to DEM or Animal Control. All human and domestic animal contacts with wildlife should be reported.
- Animal Control does not handle nuisance wildlife. It is illegal to trap and relocate wildlife. If you require nuisance wildlife to be removed from your property, you will need to hire a private, licensed trapper and can obtain a list of trappers from DEM. Eliminate food sources and seek humane ways to deter wildlife from your property.
- Do not feed pets outside, and please do not feed wildlife. Secure your trash as well.
- Place identification tags on your pets' collars so they can be returned to you if lost. Dogs should be wearing the required Town dog license.
- Make sure that your pets are properly secured and have plenty of fresh water available at all times.
- Be aware of spills of auto antifreeze/coolant. It is deadly to pets.
- Black bears are here and will be active in the spring/summer/fall months. Bird feeders make for an easy meal. Again, we ask that you take feeders down, and secure your trash. Clean your outdoor grill regularly. The high fat drippings can attract a bear.
- Contact our office at 568-9480 with questions, concerns, and animal-related complaints.

### **Important information when looking to adopt a pet:**

Large numbers of private rescue groups operating in the northeast, many of them transporting dogs and cats in from southern and midwestern states. Please do your research when adopting. Increased animal importation has resulted in a significant increase in contagious canine diseases. RI has strict importing guidelines, and we recommend that you contact the RI DEM Division of Agriculture – Animal Health Division at 222-2781 to confirm that the organization you are working with is licensed with the State. These rules are in effect to protect adopters, incoming animals, and animals already living here.

### **At Animal Control:**

Sadly, animals continue to be abandoned and surrendered, some in need of extensive medical care. The most rewarding part of our jobs is seeing debilitated animals recover and move on to new, loving homes. We are proud to work in a community of such generous and caring supporters, and thank you all for your contributions. Product donations can be dropped off at the Shelter. Money donations are used solely for veterinary expenses. Donations can be made in person at the Shelter, by PayPal on our website, and by mail to: Burrillville Animal Control, 105 Harrisville Main Street, Harrisville, RI 02830.

Find us on Facebook at [www.facebook.com/BurrillvilleAnimalControl](https://www.facebook.com/BurrillvilleAnimalControl) . Like our page to keep updated on the goings on at the shelter. We post adoptable pets, lost & found, educational info, fundraising activities, and stories of shelter pets in need. Every like and share helps get our pets seen by more people.

Remember, we are not only an enforcement division, we are also here to help and educate. Together, we do make a difference!



## **How to Access Information About Our Schools**

For daily photos and information about what's happening in our schools, check out our Facebook Page—you can search for us **@BurrillvillePublicSchools**

For general information about our schools, please visit the Burrillville School Department website at **[www.bsd-ri.net](http://www.bsd-ri.net)**. Below are just a few of the items you will find on our district website:

- ◆ **School calendars (including dates for vacations, report cards & progress reports)**
  - ◆ School Closing Information
  - ◆ Information about Special Events
  - ◆ School Committee Policies
    - ◆ District Curriculum
    - ◆ Lunch Menus

From our Home Page you can also connect to individual school websites.

## **Career and Technical Education Pathways at BHS**

Have you heard about the amazing **Career and Technical Education Pathways** available to students at Burrillville High School? A **CTE pathway** is a sequence of three or more specialized courses within a student's area of career interest. Pathways are designed to connect high school classes to college, industry certifications, and/or a career. Our pathway programs include opportunities for students to participate in industry-based projects and internships. Many result in industry-specific certifications that students can take with them when they graduate. The Burrillville School Department recognizes that there are many different ways for students to achieve an education that prepares them for life beyond high school, and we are striving to provide a learning environment that allows all of our students to reach their individual goals.

Burrillville High School proudly offers **TEN** different career and technical pathways to our students. Our Environmental Science, Project Lead the Way Engineering, Project Lead the Way Biomedical Science, Construction Management, Education, Graphic Communications and Law and Public Safety programs are endorsed by the RI Department of Education. Three additional locally approved pathways are Computer Science, Business and Finance, and Biotechnology.

For more information about our CTE Pathways, please contact **Principal Michael Whaley** at **568-1310** or **[whaleym@bsd-ri.net](mailto:whaleym@bsd-ri.net)**. Informational videos about our CTE programs, along with applications, can be accessed at our CTE website, **<http://cte.bsd-ri.net/>**.



## **Student Registration**

Are you new to our community?

Registration for school is ongoing throughout the year, by appointment. If you would like to register your child, you can start the process by calling the Central Office at 568-1301 to speak with Karie Hebert.

Registrations forms may be downloaded and printed or filled out online at <http://www.bsd-ri.net/for-parents-and-students/registration>. Parents and guardians can also access paper copies of the forms at the Central Office at any time.

## **Remarkable Burrillville Graduates**

Our Burrillville School Department faculty, staff, administration, and school committee members are so proud of the accomplishments of our graduates, and we want to shine a light on those who make us particularly proud of the great work that we do every day!

Jerilyn Sawyer, a BHS graduate who went on to study at the prestigious Berklee College of Music, founded her own artist management team in Nashville, TN. Sawyer & Garner currently manages Tanya Tucker, who won a Grammy award this year for Best Country Song. If you watched the Grammys this year, you got to see our remarkable Burrillville Alumna being hugged by Tanya Tucker!

We look forward to recognizing Burrillville graduates who have made their mark on our community and our country. If you know of a Remarkable Burrillville Graduate, please contact Mrs. Julie Mayhew, Director of Curriculum, Instruction, and Assessment, at 568-1301 or [mayhewj@bsd-ri.net](mailto:mayhewj@bsd-ri.net).

## **The Importance of Neighborhood Schools**

A recent blog post on the site *Generation All Chicago* articulates the benefits to “neighborhood schools.” In a small town like Burrillville, all our schools are neighborhood schools, and there are some real advantages to this structure.

When children attend neighborhood schools, families tend to build more and stronger relationships with other families in their community, creating a sense of cohesion and trust. As the students begin to develop life-long friendships, the parents also typically develop strong relationships, leading to stronger ties within the neighborhood. Proximity to school also allows families to connect more easily with their children’s teachers and to volunteer their time at school. The presence of adult volunteers benefits the entire school community, and research has shown that children’s success in school has a direct relationship to the level of their family’s involvement in their education. A successful community starts with top-quality public schools, and top-quality schools depend upon the community’s support.

We take great pride in our Burrillville Schools, and we look forward to welcoming all our community’s children each fall. If you have questions about your child’s neighborhood school or about our school department, we encourage you to reach out to us at the central office at 568-1301.

---

**Burrillville Extended Care**  
**Kelly E Cournoyer, Director**  
P.O. Box 351, Harrisville RI 02830  
Telephone 568-1356 Ext. 2  
[kcournoyer@burrillville.org](mailto:kcournoyer@burrillville.org)

---

*"You have brains in your head. You have feet in your shoes. You can steer yourself in any direction you choose. Oh the places you'll go!"*

**Dr. Seuss**



The Burrillville Extended Care Program offers before and after school care for children in Kindergarten through 5<sup>th</sup> grade at the Steere Farm, Callahan and A.T. Levy Elementary Schools. We also provide afternoon care for children in 7<sup>th</sup> grade who have not met the age of 13. The Program also offers a full-time care summer program, school year vacations and holidays.

**Burrillville Extended Care a well-established child care program right in your own Community!**

BEC originally began in 1996 under Just for Kids daycare in order to develop a before/after school program to meet the growing needs of the Town of Burrillville. In August of 1997, the Burrillville School Committee decided to lend their support to a new program, that quickly flourished into what we know today as Burrillville Extended Care. The School Committee discovered that quality educational programs and child care was difficult to find for the working families of the Town. This struggle was the catalyst that drove the Burrillville Parks and Recreation Department to put all of their time, faith, heart and soul into developing Burrillville Extended Care.



After countless hours of hard work, advertising, registering and a lot of convincing, the School Department along with the Town's Recreation Department opened the first B.E.C. Center at the Steere Farm Elementary School. In September of 1999, the Program had grown so much that a second site was added at the W.L. Callahan School. Then in January of 2006, it became official! B.E.C. was made into its own Department under the Town of Burrillville. Most recently B.E.C. opened its third site at the A.T. Levy school. This program serves all our Kindergarten and First Grade

families. B.E.C. serves over 280 families in our community. These children participate in our Before/After school program as well as our 10-week long Summer program. As always B.E.C. would like to thank the continued support we receive from the Burrillville School Department, Town of Burrillville, and the Community of Burrillville.

### **B.E.C. Summer Camp 2022**

Registrations for our Summer Camp Program will begin on April 1, 2022. Our Summer Program is available for the entire summer, **\*estimated to begin June 22nd, and run until, Wednesday August 31st\***. The program will operate Monday-Friday 6:30 am - 6:00 pm with the exception of **Monday, July 4th**. Mondays and Fridays will be onsite, tentatively. Wednesdays will be field trip days, and every Tuesday and Thursday will be spent at Spring Lake Beach. Upon registration you will receive a completed summer schedule with specific trips, special entertainers and events.



The B.E.C. Summer Program accepts children entering grades first thru seventh grades and haven't reached the max age of 13. This age requirement is due to our licensing through RI DCYF. RI DCYF regulations states children who will be entering Kindergarten in the Fall of 2022 may enroll to attend the B.E.C. Program starting the School Year 2022-2023.

Information and registration forms are available on the Town website: <http://www.burrillville.org/burrillville-extended-care-program> or by calling the main office at 568-1356 ext.1 to register. Be sure to "Like" our Facebook page for the latest news and updates!

Visit our website for the latest news and updates: <http://www.burrillville.org/burrillville-extended-care-program>.



---

## **Jesse M. Smith Memorial Library**

Beth Ullucci, Director

100 Tinkham Lane, Harrisville, RI 02830

(401) 710-7800 Fax: (401) 710-7772

[www.jmslibrary.org](http://www.jmslibrary.org) or visit us on Facebook and Instagram

**Call the Library for Current Hours of Operation**

---

The library is more than just books and computers. It is the cornerstone of the community, offering all a place to gather, explore, interact, and imagine!



We offer a wide variety of programming and materials for patrons of all ages. You can find story times, adult crafts and programs, special teen events, books, DVDs, computers, wireless printing, e-Books, and a whole lot more every time you visit. Come check out all we

have to offer at our beautiful building by the river!

**The Children's Department** offers a variety of fun and educational programs for children all ages. During this past year, families enjoyed a variety of outdoor programs including story times, crafts on the Riverwalk, oversized games and a Story-Walk®. In addition, children of all ages brought home "Grab and Go" kits including craft kits, literacy kits and Story Time kits. Virtual programs like online story times, craft and activity corner and book recommendations.

Be on the lookout for traditional programs when Covid restrictions are relaxed:

- Story times for kids birth to preschool including sensory story time, little explorers story time and preschool story time
- Ongoing Programs - Lego Club, Literacy Tails (read to a therapy dog), Block Party, Craft Corner
- Special events – Dinosaur Tea Party, Trick or Treat in the Library, animal visits, magicians, Summer Reading programs and prizes, special story times and many more

**The Teen Department** offers programs and resources for teens in grades 6 through 12. During the past year, teens participated in crafts on the Riverwalk, oversized games and crafts. "Grab and Go" craft kits were offered each month. Virtual programming included Facebook Live trivia nights, book read-alike talks, Kahoot! Trivia, online games and virtual book discussion groups.

When Covid restrictions are relaxed, teens can once again flock to the library in search of fun and a safe place to hang out. Our **Teen Hangout** in the Community Room provides teens in grades 6 through 12 with food, games, crafts and a place to relax after school. We offer:

- Video games on the Nintendo Switch and Wii

- Computers are available for homework and fun
- Special events – after hours Laser Tag & Manhunt, fun with food programs, video game tournaments
- Ongoing programs include the Teen Advisory Council, drop-in crafts, Tech Club
- Get ready for exams with quiet Teen Study spaces, extended Teen Hangouts and an Exam Cram Night
- Special events all summer long as part of Summer Reading – read, attend fun programs and win prizes

**Adults** have many reasons to visit the library too! Not only can we help you discover great books, DVDs and other materials, but so much more! During the past year, we offered Crafty at Home Kits to adults each month. Virtually, there were Facebook Live Trivia nights, book talks, instructional craft videos, book puzzlers and tech tips and tricks. We look forward to offering fun and informational in person programs once Covid restrictions are relaxed.

- Programs – crafts, informational speakers and special events (ex. Escape Rooms, Haunted Library). Ongoing programs include Knitting & Crochet Groups and a Writer's Group.
- Technology assistance – computer classes, 1-on-1 help sessions, and drop-in internet support.
- Databases – Ancestry Library Edition, Providence Journal and [AskRI.org](http://AskRI.org) (learn a language, fix a car, health information, college & career test preparation, etc.).

#### **Did you know we offer...**

- Downloadable eBooks & audiobooks and streaming video through the Ocean State Libraries eZone
- Circulating special items, including movies and TV Series on DVD, appliance voltage meters, fishing poles/tackle boxes and sit/stand rolling walkers
- Wireless printing from home or your mobile device from within the library
- Fax services and document scanning to email

#### **Riverwalk Times Concerts Series**

The Friends of the Library bring some amazing music to the library every summer on Saturdays from 6:00 to 8:00 pm outside, in front of the library at the Pavilion. Bring blankets and chairs and come on down to enjoy the music! These concerts are sponsored by the Friends of the Jesse Smith Library along with support from local business and organizations



Our 2022 Summer Concert Schedule: (tentative and subject to change)

**JULY 9: Brass Attack**  
**JULY 16: The Aviators**  
**JULY 23: All About Amy**  
**JULY 30: Kelley Lennon**  
**AUGUST 6: Whiskey Road**  
**AUGUST 13: Live Music**  
**AUGUST 20: Jesse Liam**

### **Friends of the Library**

It is thanks to the Friends of The Jesse Smith Library that we are able to hold many of our amazing programs including our summer reading programs, Halloween events and the Riverwalk Times Concert Series. The Friends raise funds through book sales, vendor fairs, silent auctions and donations. They are always looking for new members. The Friends meet on the first Wednesday of each month at 6:30 pm.

### **Be on the lookout for some spectacular events in the coming months!**

- We will offer traditional in-person programs when we can do so safely.
- National Library Week Celebrations in April: Mini Golf and Circus Dynamics
- Summer Reading Program for all ages! Sign-ups begin for our Summer Reading Program on Saturday, June 18. This year's theme is Beyond the Beaten Path. We have many exciting programs and reading incentives & prizes for everyone – kids, teens and adults!

### **Find out what is happening at the Library!**

- Facebook and Instagram
- Monthly Newsletter
- Library's Website <http://www.jmslibrary.org>





---

## **Burrillville Wastewater Facility/Sewer Commission**

Michael Emond, Superintendent  
141 Clear River Drive, Oakland, RI 02858  
PO Box 71, Harrisville, RI 02830  
Phone: 401-568-6296  
Fax: 401-568-9464

Hours: Mon. - Thurs. 8:30 a.m. to 4:00 p.m., Fri. 7:30 a.m. to 3:00 p.m.

---

The Board of Sewer Commission is comprised of five (5) members. The members are currently William Andrews - Chairman, Richard Nolan - Vice Chairman, Russell Fontaine - Secretary, Gary Rouleau and Dan Joubert - Commission Members. The Commission holds meetings on the second Tuesday of each month at 6:30 p.m. in the Board Room of the Wastewater Treatment Facility. If you would like an item placed on the agenda, the request must be received at this office by the first Tuesday of the month no later than 2:00 p.m.

**Sewer Use Charges:** The sewer use rate for FY22 is \$614.80 a year for a single family dwelling. At the present time, residential sewer use charges are mailed once a year in October and can be made in quarterly payments. Please note that failure to receive a bill does not negate the requirement to pay the bills when they are due.

**Sewer Assessment Charges:** Sewer assessment bills are mailed out once a year in the month of July. Homeowners can choose to pay the sewer assessment in a lump sum or over a 20 year period. If you choose the 20 year payment plan, you can, at any time, make additional payments to the assessment or pay in full. Should you sell or transfer your property, the sewer assessment is not transferrable to the new owner. Any assessment balance must be paid in full at the time of the sale.

**Payment:** Check payments should be mailed to: **PO Box 71, Harrisville RI 02830**. Alternately, there is a drop box located to the right of the front door of the Wastewater Treatment Facility, which is accessible at the above hours. Customers may also use the drop box at Town Hall, which is accessible 24/7. Please label your envelope "Sewer Payment." Checks only - No Cash. Please leave your email or a note if you would like a receipt.

You may also pay your bill online at [www.RleGov.com](http://www.RleGov.com). You will need your account number and pin number, which are located on the upper left hand corner of your bill. Please note that the online payment company charges a 3% fee to use this service.

If you are having financial difficulties, please contact this office as soon as possible so that we can set up payment arrangements.

This office does accept postmarked for payments, however, payment with no postmarks (such as payments left in the drop box at Town Hall) will be processed on the actual day they are received by this office.

Cash payments will be accepted at the office but are not encouraged. Rules, restrictions and directions for the general public to enter the building can be found on the Town's website: [www.burrillville.org/wastewater-treatment-facility](http://www.burrillville.org/wastewater-treatment-facility).





## **The Burrillville Lions Club**

P.O. Box 414, Harrisville, RI 02830

Phone: (401) 568-5596 [www.rilions.com](http://www.rilions.com)

***"Where there's a need, there's a Lion"***

---

Celebrating its 75<sup>th</sup> Anniversary in 2022, the Burrillville Lions Club is a volunteer, non-profit organization serving the residents of Burrillville and North Smithfield. Chartered in 1947, the Club meets the 1<sup>st</sup> and 3<sup>rd</sup> Wednesday of each month at 7:00 p.m. (social time at 6:30 p.m.), except July and August, at Uncle Ronnie's Red Tavern in Nasonville. Fund raisers are held to provide for charitable and community betterment activities including a since-founded tradition of sponsoring a learn-to-swim program at the Town beach, providing scholarships for resident high school seniors, supporting the Town's food banks, providing dictionaries to all 3<sup>rd</sup> grade students in both Towns, hosting camps for blind and handicapped children at the Town beach, supporting the RI Sight Foundation and Children with Cancer Fund, assisting families at the State's Ronald McDonald House, and many other endeavors. One hundred percent of all net proceeds are returned to the community.

Other services provided include: conducting eye screening for elementary school children; providing food and support for the Backpack Program; conducting Earth Day cleanups; assisting residents with eye care issues; and providing emergency assistance as appropriate.

The Burrillville Lions Club is part of Lions Clubs International, the largest service organization in the world. Membership is encouraged and volunteers are always needed and welcomed. If interested, please contact us at the above address, web-site, or phone.

---

## **Burrillville Historical and Preservation Society**

16 Laurel Hill Avenue, Pascoag, RI 02859

Phone: (401) 568-8534

Website: [www.bhps.org](http://www.bhps.org) Email: [bmencucci@verizon.net](mailto:bmencucci@verizon.net)

---



*Burrillville Historical  
& Preservation Society*



The Burrillville Historical & Preservation Society's mission is to preserve and protect Burrillville's history. The Society normally meets on the 4<sup>th</sup> Tuesday of each month at 7:00 p.m. at its headquarters, the Bridgeton School in Pascoag. However, due to the pandemic, meetings have been canceled until further notice. This 1897 school-house serves as a repository for a collection of photos, documents, histories, scrap-books, cemetery information, clothing and artifacts. If you have old photos you would like to share, we can scan them and return your originals.

Did you know that Burrillville has 130 historical cemeteries? We are always looking for volunteers to help us with cemetery cleanings. The work involves cutting brush,

weed-whacking and raking leaves. We especially need volunteers that can weed-whack. Even if you can volunteer one hour of your time in a year, the help would be greatly appreciated. This is a great opportunity for high school students to get their community service hours for graduation. Contact us if you'd like information on our adopt-a-cemetery program.

### **RHODE ISLAND CEMETERY WEEKS**

Instead of celebrating Cemetery Awareness Day on one day in April, this year the State will be celebrating Rhode Island Cemetery Weeks. During the months of April and May the public will be invited to participate in clean-ups, cemetery tours, gravestone conservation demos and other special cemetery events. In Burrillville we will be celebrating by hosting three events. Listed below is a tentative schedule. Please contact us or visit our Facebook page for more complete information.

Saturday, April 9 from 8:00 AM—Noon. Clean-up at the Riverside Cemetery in Harrisville (located opposite the Harrisville Fire Station). The event will also feature a gravestone conservation demo and stone cleaning info.

Sunday, May 1 from 1—3 p.m. Tours of the Sayles Cook Cemetery with historical information on the people buried there; mainly the wealthy mill owners of the Sayles Mill (Granite Mill) along with their families. The gravestone conservation work that was completed in 2019 will be explained. The work is impressive, considering the height of some of the monuments are 15 feet tall.

Saturday, May 14 from 9-4 p.m. Gravestone Conservation workshop at the Pascoag Cemetery. This is a hands-on activity for those wishing to learn how to clean and reset/repair gravestones.

---

### **Berard-Desjarlais American Legion Post 88**

111 Chapel Street, Harrisville, RI 02830

[www.facebook.com/652934938132142](https://www.facebook.com/652934938132142)

---

The American Legion was chartered and incorporated by Congress in 1919 as a patriotic veterans organization devoted to mutual helpfulness. It is the nation's largest veteran's service organization, committed to mentoring youth and sponsorship of wholesome programs in our communities, advocating patriotism and honor, promoting strong national security, and continued devotion to our fellow service members and veterans needs.

The Post supports many community programs and provides a meeting place for Burrillville organizations. Linda Peck, Town and Post Service Officer, is the Veterans Representative. Office hours are held on the second Tuesday for Coffee Hour from 9:00 a.m. to 12:00 p.m. and the third Wednesday of each month at 5:30 p.m. at Post 88. For any emergencies, please contact Linda Peck at 401-568-8491 or by email: [ldp24@cox.net](mailto:ldp24@cox.net).

Ray Trinke has taken over the duties of Building Coordinator. He will maintain the schedule at the Binns Building and can be reached at 401-568-0858 or by e-mail at [raytrank101@cox.net](mailto:raytrank101@cox.net). Please contact Ray also for any Town organizations or party rental or if you would like to become a member of the post.

**Support the Post 88 Flag Sale. Flags can be purchased at Post 88 or at Lawrence Brothers Hardware located across from Post 88 in Harrisville.**

**We collect used clothing for the needy in the donation shed located outside our post home.**

---

## **Pascoag Public Library**

57 Church Street  
Pascoag, RI 02859  
Tel: 401-568-6226 Fax: 401-567-9372  
<http://pascoaglibrary.org>  
<http://facebook.com/PascoagLibrary>

---

**Pascoag Public Library: *Your landmark library since 1871.***



**REOPENING LIBRARIES:** PHASE 3. PLEASE TAKE ADVANTAGE OF CONTACT-FREE SERVICES.

Our current hours are as follows:

- Mondays: 1-8
- Thursdays: 10-8
- Fridays: 10-3
- Saturdays: 9-1

ALL PATRONS MUST WEAR A FACE MASK/COVERING.

10 PEOPLE MAX, INCLUDING STAFF, WILL BE ALLOWED ON EACH FLOOR AT ONE TIME.

PASCOAG PUBLIC LIBRARY encourages patrons to take advantage of contact-free service. You may call 401-568-6226 or email [info@pascoaglibrary.org](mailto:info@pascoaglibrary.org) (link sends e-mail) or use [Library Takeout](#).

### **Pascoag Library Information:**

- ***No donations at this time. Please do not leave items outside due to the possibility of weather damage.***
- Dropbox for returns is open
- PAS is scheduled for deliveries on Mondays & Thursdays.
- Email available anytime: [info@pascoaglibrary.org](mailto:info@pascoaglibrary.org)
- Call 401-568-6226 and leave a message
- Please visit [AskRI.org](http://AskRI.org) for info about Beanstack which is available to all public libraries.

## **Resources:**

- Office of Library & Information Services (<https://olis.ri.gov/>)
- Rhode Island Library Association COVID-19 Library Resources (<https://rilibraries.org/COVIDResources>)
- Office of the Governor (<https://rilibraries.org/COVIDResources>)
- RIDOH COVID-19 Information (<https://covid.ri.gov/>)

## **HISTORY**

The Pascoag Public Library is an integral part of the history of the Town of Burrillville. It was the first library in the Town, founded in 1871 by a women's group called the Pascoag Union Sewing Society. In 1873, they renamed themselves the Ladies Pascoag Library Association, appointed a librarian, and purchased 163 books, which were housed in the librarian's local store.

The Library moved four times between 1883 and 1899 when Samuel Mellor offered the use of a room rent free over his mill office on Sayles Avenue where it remained until 1913 when it moved to the Steere Building on Main Street. At this time, charges associated with the loan of books were discontinued and the library became known as the Pascoag Free Public Library.

A bequest of \$500 from Miss Rosamond A. Steere stipulated that the money be used for a free public library building within ten years. This started the building fund, which grew through numerous fundraisers and donations. The library's current home at 57 Church Street was erected in 1924. By 2010, it was clear that the library needed room to grow. With grants from the Champlin Foundation and the Levy Foundation, the library added a 36x22 foot addition, nearly doubling its size. Construction was completed in June 2011, at the 140th anniversary of the library's founding.

The Library is privately owned by the Ladies Pascoag Library Association and governed by the Board of Trustees, which is still composed of all women.



---

## Pack 1 Pascoag, Cub Scouts Troop 1 Pascoag/Troop 102 Mapleville, Boy/Scouts USA

---

### SCOUTING IN BURRILLVILLE

**Cub Scouts** is a program for kindergartners through fifth graders of both boys and girls. Scouts BSA teaches while having fun, focusing on character development, teaching practical skills and enhancing their community spirit. Cub Scouts are made up of Den's (groups of Scouts) for each grade. They meet once a week during the school year and then get together for a Pack meeting once a month to show what they've learned and receive their awards. At this time, there are two Cub Scout pack in Town that meet on different evenings. For more information about Pack 1 Pascoag, please contact Florence Stevens at 401-692-6716, or by email at [newtfla@gmail.com](mailto:newtfla@gmail.com). For Pack 102 Mapleville, please contact Dan Esposito at [espodan512@gmail.com](mailto:espodan512@gmail.com).

**Boy Scouts** begin in fifth grade and can stay in until they're 18 years old. Girls can also join this program, now called **Scouts BSA**, but are separate from the boys. Every day they are encouraged to live by the 13 points of the Scout Law by being trustworthy, loyal, etc. They are taught skills of the world around them by earning merit badges. Boy Scouts are grouped by rank, not by grade, with the highest rank being Eagle Scout. The Troops are separated into groups of similar ranks and skills, called Patrols. All the Scouts meet once a week and have a "Court of Honor" three times a year where they are recognized and are presented their awards. There are two Troops in Town. For more information about Troop 1 Pascoag, please contact Newton Stevens at 401-568-0395 or [newtfla@gmail.com](mailto:newtfla@gmail.com). For more information about Troop 102 Mapleville, please contact Dan Esposito at [espodan512@aol.com](mailto:espodan512@aol.com).

---

### **The Burrillville Conservation Commission**

---

The Burrillville Conservation Commission's mission is to protect and preserve the natural tranquility of the local natural reserves, features and attributes that defines the Town of Burrillville's natural characteristics which draws people to this community to enjoy the rural atmosphere, scenic vistas, recreational opportunities and many qualities of life. The Conservation Commission is responsible for the establishment of a seven-member party that serves as an appointed board reporting directly to the Town Council, Planning Board, Zoning Board and the many municipal employees that constitute the Town's government.

Some of the wonderful areas the Conservation Commission manages are as follows:

1. Joseph O. Brock Blanchard – Nipmuc Trail, located off of Round Top Road, ¼ mile north of Smith Road. Trail is for public walking, hiking & fishing on 200+ acres of land along the Nipmuc River.
2. Wallum Lake Canoe Launch, located off South Shore Road on scenic Wallum Lake. Site is strictly for canoeing, kayaking and fishing. Swimming is prohibited.
3. Clear River Canoe Launch, located off Clear River Drive just behind the Burrillville Animal Control Facility. Access allows scenic exploration of the Clear River from the site to points south along Clear River towards Mill Pond in Oakland.

The Conservation Commission also provides natural resources to our residents on Earth Day, at the Annual Family Fair and other Town sponsored programs throughout the year.

---

## **The Burrillville Farmers Market**

Saturdays, 9:30 am—12:30 pm

June 4 - September 24

Stillwater Mill Center

75 Tinkham Lane

Harrisville, RI 02830

Saturdays, 9:30 a.m. to 12:30 p.m., June 4th through September 24th

---

The Burrillville Farmers Market Association is a nonprofit organization, whose mission is to promote and market the products of local farms and artisans in our beautiful, rural community and surrounding areas. We hope you'll support us, as we strive to bring a diverse shopping experience, while reducing our carbon footprint and encourage a more sustainable and stronger local food system.

This will be our 17th season and we look forward to seeing our many loyal customers as well as welcoming many new ones! We are always growing and changing to meet the needs of our customers. Look for some new and exciting developments this year!

We are very happy to continue our Double Bonus Buck Program. Thanks to a USDA grant and Farm Fresh RI, our locally grown, nutritious food is accessible to all! 100% Bonus Bucks to shoppers using federal SNAP (Supplemental Nutrition Assistance Program). For every dollar you spend with EBT, you get a FREE dollar in Bonus Bucks to spend on fresh fruits and vegetables at the Farmers Market.

Please help us reduce pollution caused by plastic bags by using reusable bags. We have Burrillville Farmers Market totes made from recycled plastic available.

The Market accepts: Cash, Credit/Debit, SNAP/EBT, WIC Fruit & Vegetable checks, and Senior Farmers Market Nutritional checks. Stop by the Welcome Table for assistance!

We follow DOH COVID 19 guidelines for Farmers Markets for the health and safety of our customers and vendors. Thanks to the Town of Burrillville for their continued support. Thanks to Burrillville DPW, Burrillville Economic Development, and Parks and Recreation for their constant upgrades to the Stillwater Center and for unending Pavilion repairs,. Thank you to the June Rockwell Levy Foundation for their continued support and assistance, and to all our vendors, volunteers and customers who keep us growing!

If you love Farmers Markets and want to help out, play some music, or be a vendor, contact us; we'd love to hear from you!

Let's make this, our 17th season, a great one! Follow us on Facebook for all the latest updates! For more info and online vendor applications, please visit [www.burrillvillefarmersmarket.org](http://www.burrillvillefarmersmarket.org); email us at [burrillvillefma@gmail.com](mailto:burrillvillefma@gmail.com); drop us a line at Burrillville Farmers Market, PO Box 215, Pascoag, RI 02859; or call Deb Yablonski, Market Manager at (401) 568-3191 or Tammy D'Amato, Assistant Manager at (401) 567-9393.



**Burrillville**  
**Farmers' Market**



---

## Information & Services for Seniors

Lisa Jessup, CIS  
84 Social Street, Woonsocket, RI 02895  
Phone: 766-3734 Fax: 766-5578

---

The Community Information Specialist at Senior Services, Inc. in Woonsocket, RI, is available to assist and advise senior residents of Burrillville. Please call Senior Services, Inc. at 401-766-3734 to make an appointment. The Specialist can provide information and assistance with applying for programs you may be eligible for.



The Specialist is also trained as a Senior Health Insurance Program (SHIP) Counselor and can explain health insurance options available to Rhode Island seniors so that they may make informed choices concerning their health care.

---

Understanding Medicare enrollment periods can help you prevent gaps in coverage and avoid financial penalties.

- **Know when to sign up for Medicare Part A and Part B.**
- **Know when you can routinely make changes to your Medicare coverage.**
- **Know whether you are eligible for a Special Enrollment or Special Election Period.**

### Take Action:

- 1) Familiarize yourself with each Medicare enrollment period to avoid gaps in coverage and financial penalties.
- 2) If you need help making coverage changes or understanding your options, contact your SHIP.
- 3) If you receive suspicious offers or charges, contact your Senior Medicare Patrol (SMP) to discuss potential abuse or fraud.

### Services Available If Eligible

Assisted Living Facilities, Caregiver Abuse, Financial Assistance, Fraud/Waste and Abuse, Health Insurance, Heating Assistance, Home and Community Care Co-Pay, Identification (DEA/RIPTA), Home Equity Conversion, In Home Services, SNAP (Food Stamps), Legal Assistance (Living Wills, Health Care Power of Attorney, Medicare, Medical Assistance (Medicaid) Long-term Care, Property Tax Relief, (1040H) Respite Care, RI Pharmaceutical Assistance, Transportation.

\*Referrals to other agencies\*

To reach the Town's webpage devoted to news and information for seniors, go to the Town website <https://www.burrillville.org/senior-services>

and click on the "Senior Services" button on the left. In addition to *Senior News*, the page contains useful links and information on services and programs available to residents. The site covers topics such as Social Security, RIPAE, State identification cards, RIPTA, senior dining – and more!



---

## Community Assistance Information

---



### **Burrillville Resources**

<http://www.burrillville.org/home/pages/community-resources>

---

#### **Berean Baptist Church**

474 Chapel Street  
Harrisville, RI 02830  
401-568-5411

#### **Coats of Colors Closet**

1st & 3rd Saturday of month  
8:30 am to 10:30 am

Free clothing, shoes, jackets, etc. for men,  
women and children.

**Open to all residents of Burrillville,  
Glocester, No. Smithfield, and Foster**

---

#### **Burrillville Housing Authority**

77 Ashton Court  
Harrisville, RI 02830  
401-568-6200

**Rental Housing / Section 8  
For Seniors & Handicapped**

---

#### **Our Lady of Good Help Church**

1063 Victory Highway  
Mapleville, RI 02839  
401-762-1834

#### **2019 SVDP Food Pantry**

10:00 am to 11:00 am : Elderly & Disabled  
6:00 pm to 7:00 pm: All others

February 5, March 5, April 2, May 14,  
June 4, July 9, August 6, September 3,  
October 1, November 5, December 3

*\*Bring your reusable or plastic bags\**

*\*If Burrillville schools are closed on a sched-  
uled opening, will reschedule to open the  
Saturday of that week.  
10:00 am to 11:00 am*

---

#### **Between the Cracks**

401-291-0590

Patricia Shaw

Call for help with fuel, rent, groceries and  
other needs in emergency situations.

---

#### **St. Patrick's Church**

401-568-5600

Call between 8:00 am to 12:00 pm  
Monday to Friday

#### **Food Pantry**

Every other Monday 5:30 pm to 7:00 pm  
(Tuesday if Mon. Holiday)

**Clothing and Household Items  
also available.**

**\* Call for Emergency Appointment \***

---

#### **Burrillville Seventh Day Adventist**

854 Victory Highway  
Mapleville, RI 02839  
401-678-0035 (Claire)

#### **Food Pantry & Food Closet**

Last Tuesday of each month  
5:30 pm to 7:00 pm

---

#### **Burrillville Lion's Club**

P.O. Box 414  
Harrisville, RI 02830  
401-568-4300 x145

Call for the appropriate contact for  
financial assistance to purchase eye  
glasses and screening .

---

## **More Information & Services**

---

### **RI Dept. of Human Services**

401-222-5960

\*Supplemental Nutrition  
Assistance Program (SNAP)

**Based on income, resources, and  
the number in household**

### **Neighborworks Blackstone River Valley**

719 Front Street, Suite 103  
Woonsocket, RI 02895  
401-235-7000

[neighborworksbrv.org](http://neighborworksbrv.org)

**Works with residents, businesses,  
neighborhood institutions, partners  
and communities to enrich  
neighborhood life and make affordable  
housing opportunities available .**

### **Community Care Alliance**

800 Clinton Street  
Woonsocket, RI  
401-235-7000

[communitycareri.org](http://communitycareri.org)

**We support people in their efforts to  
stabilize and build better lives as-  
sisting with life's many challenges  
such as education, mental health,  
addiction, housing, employment,  
etc.**

### **Meals on Wheels**

351-6700

[www.rimeals.org](http://www.rimeals.org)

This program provides up to five noontime  
meals per week to the elderly or disabled.  
(\$3.00 donations accepted)

### **Crossroads Rhode Island**

401-521-2255

401-461-1755

<https://www.crossroadsri.org/>

**Help for the Homeless**

### **Chepachet Union Church**

1138 Putnam Pike  
Chepachet, RI  
401-568-2518

**Gently used clothing  
at a very small price.**

#### **Food Pantry**

1st & 3rd Saturday  
10:00 a.m. to 12:00 p.m.

### **Stillwater Heights**

30 Central Street  
Harrisville, RI 02830  
401-710-7344

<http://www.stillwaterheightsaps.com>

**Low Income Housing  
for Seniors 62 or better**

### **RI Division of Elderly Affairs**

401-462-3000

<http://www.dea.ri.gov>

Call to ask for a pocket manual of  
services or visit the website to view.

### **Burrillville Addiction Assistance**

Wallace Lees Public Safety Complex  
Victory Highway, Burrillville, RI  
401-710-9054

Brandy Bates, Coordinator  
Addiction Referrals & Recovery Support



**Tri-Town  
Community Action Agency**  
*Helping people. Changing lives.*

Main Office:

1126 Hartford Avenue, Johnston, RI 02919

Phone: 401-351-2750

[www.tricountyri.org](http://www.tricountyri.org)

Other offices:

11 Emanuel Street, No. Providence, RI 02911

185 Main Street, Pascoag, RI 02859

**Children, Youth & Families**

\*Head Start & Early Head Start

\*Seasonal Distribution  
of Food Baskets and Toys

**Seniors & Disabled Adults**

**Assist families in providing care  
to their loved ones.**

- \* Adult Daycare
- \* National Family Caregivers
- \* ...and more

**Food & Nutrition**

\*WIC Nutrition Program

**For low-income women, infants, and  
children up to age 5 at  
nutritional risk.**

Sites in Johnston and Burrillville

\*Food Stamp Assistance (SNAP)

\*Commodities Distribution  
(Food Bank)

\*Emergency Food Vouchers

**Health Center**

**Affordable health services available  
on a sliding fee discount to families  
who meet eligibility requirements.**

**Employment Education & Training**

**401-519-1909**

- \* Adult Basic Education Program
- \* Financial Literacy Program
- \* Adult Job Training

GED exam preparation, adult basic education, post secondary educational assistance, and alternative diploma programs.

- \* Youth Opportunity Center (ages 14 to 24)
- \* Summer Youth Employment & Training Program

**Housing, Energy & Emergency**

- \* Appliance Management Program
- \* Emergency Basic Human Needs
- \* Emergency Boiler Repair
- \* Emergency Shelter Vouchers
- \* Fuel Assistance (LIHEAP)
- \* Good Neighbor Energy Fund
- \* Weatherization Assistance Program

## Affordable Housing in Burrillville

### HUD Subsidized Senior Housing Assistance

#### **Ashton Court**

Burrillville Housing Authority  
William Valentine, Executive Director  
77 Ashton Court  
Harrisville, RI 02830  
Tel: 568-6200 Fax: 568-4735

***Our mission is to provide decent,  
safe and sanitary housing  
for elderly/handicapped-disabled:  
Public Housing and Section 8  
existing housing program.***

#### **Bradford Court**

Ken DeCaporale, Property Manager  
45 North Main Street  
Pascoag, RI 02859  
Tel: 568-5403 Fax: 568-1717

***We accommodate residents 62 and  
older, as well as handicapped  
and disabled with a preference  
to the elderly.***

#### **Stillwater Heights Housing**

Theresa Stelmach, Property Manager  
30 Central Street  
Harrisville, RI 02830  
Tel: 710-7344 Fax: 710-7346

***We provide independent living  
accommodations for residents 62  
and older who meet  
HUD income guidelines.***

### Affordable Mixed Family Housing

#### **Greenridge Commons**

Maloney Properties, Property Manager  
124 Garvy Ledges Lane  
Pascoag, RI 02859  
Tel: 762-5220

**Greenridge Commons is a mixed-  
income community. To rent an  
affordable unit you must meet  
certain income requirements.**

#### **The Clocktower Apartments**

Maloney Properties, Property Manager  
200 Tinkham Lane  
Harrisville, RI 02830  
Tel: 762-3600

**The Clocktower is a mixed-income  
community offering apartments  
at three income levels. To rent an  
affordable unit you must meet  
certain income requirements.**

---

**The Assembly Theatre**  
"The Center for the Arts in Burrillville"  
26 East Avenue, Harrisville, RI 02830  
[boa@burrillville.org](mailto:boa@burrillville.org)

---

# THE ASSEMBLY THEATRE

est.

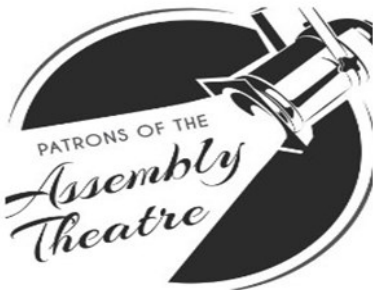
AT

1934

The Assembly Theatre is beautifully located next to Harrisville Pond and waterfall. A volunteer group, the Patrons of the Assembly (a 501C3 non-profit), has made it their mission to bring quality events to the theatre for the community to enjoy!

The Assembly Theatre was built in 1934 by mill owner and philanthropist Austin T. Levy. Mr. Levy and his wife, June Rockwell Levy, donated the Assembly to the Town of Burrillville for the residents to enjoy quality fine arts.

The Board of Administration was created by Mr. Levy in 1934 to oversee the Assembly Theatre and the Board continues to manage and maintain this beautiful historic theatre to this day. The Board of Administration collaborates with The Patrons of the Assembly Theatre to bring exciting events to the community. Please visit [www.assemblytheatre.org](http://www.assemblytheatre.org) to see all our upcoming programming.



**Please Scan To Subscribe  
& Be Notified Of Our  
Upcoming Events**



**VISIT OUR WEBSITE: ASSEMBLYTHEATRE.ORG**



---

## **Town of Burrillville Post Offices**



### **Harrisville Post Office**

131 Harrisville Main Street, Harrisville, RI 02830

Wendy Demarais, Postmaster

Mon. - Fri. Retail Hours: 8:30 a.m. - 1:30 p.m. & 2:30 p.m. - 4:45 p.m.

Lobby Open: 7:00 a.m. - 5:30 p.m.

Sat. Retail: 9:00 a.m. - 12:00 p.m., Lobby Open: 7:00 a.m. - 12:00 p.m.

401-568-9075

### **Glendale Post Office**

1916 Victory Highway, Glendale, RI 02826

Wendy Demarais, Postmaster

Marlene, Clerk

Mon.-Fri. Retail Hours: 10:00 a.m. - 1:00 p.m. & 2:00 p.m. - 4:45 p.m.

Lobby Open: 6:00 a.m. - 6:00 p.m.

Sat. Retail: 8:30 a.m. - 11:30 a.m., Lobby Open: 6:00 a.m. - 3:00 p.m.

401-568-8782

### **Pascoag Post Office**

35 Bridgeway, Pascoag, RI 02859

Christopher Jackson, Postmaster

Mon.- Fri. Retail Hours: 8:15 a.m. - 12:30 p.m. & 1:30 p.m. - 4:45 p.m.

Lobby Hours: 7:00 a.m. - 5:00 p.m.

Sat. Retail: 8:30 a.m. - 11:30 a.m.

Lobby Open: 7:00 a.m. - 12:00 p.m.

401-568-8790

### **Mapleville Post Office**

963 Victory Highway, Mapleville, RI 02839

Wendy Demarais, Postmaster

Mon.-Fri. Retail Hours: 8:30 a.m. - 12:30 p.m.

Lobby Open: 7:00 a.m. - 5:00 p.m.

Sat. Retail: 9:00 a.m. - 11:30 a.m.

Lobby Open: 8:30 a.m. - 12:00 p.m.

401-568-7312



## **Your Local Fire Departments**

### **Harrisville Fire Department**

Michael E. Gingell, Chief  
201 Callahan School Street, Harrisville, RI 02830  
Business Telephone: 401-568-5110



### **Oakland-Mapleville Fire Department**

Joseph E. Bertholic, Chief  
46 Oakland School Street, Oakland, RI 02858  
Business Telephone: 401-568-5720

### **Pascoag Fire Department**

Mark St. Pierre, Chief  
**Hose #1** 105 Pascoag Main Street Pascoag, RI 02859  
Business Telephone 568-4470  
**Hose #2** 141 Howard Avenue, Pascoag, RI 02859  
Business Telephone: 401-568-4920

### **Wallum Lake Fire Department**

Robert Bishop, Chief  
P.O. Box 354, Pascoag, RI 02859  
Business Telephone: 401-568-9019

Note: Business telephones are not manned at all times.  
Dispatch at the police department can be used for emergencies 401-568-6255

***For emergencies dial 911***



***Give Back to Your Community***

***With a sense of pride!***

***Inquire about volunteering!***





## State Government Officials

**Governor**

Daniel McKee

[www.governor.ri.gov](http://www.governor.ri.gov)

401-222-8096

**Secretary of State**

Nellie Gorbea

[www.sos.ri.gov](http://www.sos.ri.gov)

401-222-2357

**Lt. Governor**

Sabina Matos

[www.ltgov.ri.gov](http://www.ltgov.ri.gov)

**Attorney General**

Peter Neronha

[www.riag.ri.gov](http://www.riag.ri.gov)

401-274-4400

**General Treasurer**

Seth Magaziner

[www.treasury.ri.gov](http://www.treasury.ri.gov)



**District 23, Jessica de La Cruz**

[sen-delacruz@rilegislature.gov](mailto:sen-delacruz@rilegislature.gov)

**District 47, David J. Place**

[rep-place@rilegislature.gov](mailto:rep-place@rilegislature.gov)

**District 48 Brian C. Newberry**

[rep-newberry@rilin.state.ri.us](mailto:rep-newberry@rilin.state.ri.us)

617-406-4619

## **NOTES**

Burrillville Town Hall  
Office of the Town Manager  
105 Harrisville Main Street  
Harrisville, RI 02830