

Burrillville Bugle

Spring-Summer 2019



Town Hall & Annex

Hours

Mon - Wed. 8:30 to 4:30, Th. 8:30 to 7:00, Fri. 8:30 to 12:30

Town Hall	Town Hall Annex
105 Harrisville Main Street 401-568-4300 Fax: 401-568-0490	144 Harrisville Main Street 401-568-4300 Building Ext. 127 / Planning Ext.130 Fax: 401-710-9307

Burrillville Historic Community Since 1806

Embracing our Past...Envisioning our Future

Index

	Page
Addiction Assistance Program & Prevention Action Coalition	34
Adopt-A-Spot	9
Affordable Housing: Senior & Mixed Families	55
Animal Control Shelter	35
Berard-Desjarlais American Legion, Post 88	46
Boy Scouts of America	49
Board of Administration –The Assembly Theatre	56
Burrillville Extended Care	40
Commerce Park	7
Community Assistance Information	52
Conservation Commission	49
Department of Public Works	16
Department of Public Works, Refuse & Recycling	18
Emergency Management	31
Farmers Market	50
Finance Director	10
Fire Departments	58
Historical & Preservation Society	45
Jesse M. Smith Memorial Library	41
Lions Club	45
Parks and Recreation	24
Pascoag Public Library	47
Police Department	30
Post Offices	57
Redevelopment Agency	8
School Department	38
Senior Services	51
Spring Lake Beach	28
State Government Officials	59
Tax Assessor	12
Town Clerk	13
Town Council President	4
Town Manager	5
Waste Management / Sewer Commission	44

How to Get Information/Contact Us

Use this Publication

Contact information, such as phone numbers, extensions, and email addresses are listed within under the department headings.

Town Website

The Town has a website that is full of information for residents and visitors! www.burrillville.org.

- The website is a great tool to find current information out about the Town, obtain contact information for all the different Town departments, Town budgets and finances, and very helpful EMERGENCY AND CODE RED INFORMATION.
- **E-Subscribe:** Sign up to receive newsletters, job opportunities, notices, etc., for what interests you and be up-to-date as to what's current in Burrillville.
- **Public Notices:** View current meeting news, job opportunities, press releases, and news from the Parks and Recreation Department, current rubbish and recycling information, as well as a copy of this Burrillville Bugle.
- **Pay Taxes:** For your convenience, you can pay your taxes, using your account number and PIN shown on your bill. There is a convenience fee of 3%, with a minimum of \$2.00.
- **Code Red:** Sign up to be notified by your local response team in the event of an emergency situation or critical community alert.
- **Forms & Documents:** Many of the forms and documents needed to do business with the different Town agencies, such as applications, registrations, tax exemptions forms, etc., can be found right within this tab.
- Click on the **iHelp Center** for links on additional topics of interest, one being a separate website dedicated to promoting Burrillville's quality of life, the natural beauty and local history of our Town. Click on Visit Burrillville for the link.

Facebook

Like us on Facebook! The Town of Burrillville and the Police Department have Facebook pages. It is another great way for us to communicate with the residents and visitors of Burrillville in this digital age. Both are updated regularly.



Town Council President

John F. Pacheco III

Greetings,

Once again, we have had an incredible Fall/Winter season here in our Town. We have had many playoff-bound sports teams, championships in robotics, and awards for music and academics.

Our kids and schools continue to impress not just in our Town, but throughout the state. An excellent example is the selection of our high school as a National Banner Unified Champion School by the RI Special Olympics, a very impressive feat for any school.

This fall we also had an election resulting in two new members of the Town Council: Councilor Amanda Gingell and Councilor Dennis Anderson. They are both excellent additions to our Town Council. Please attend a Council meeting to support our efforts. Meetings are held on the second and fourth Wednesday of each month at 7:00 p.m. at the Town Hall.

As always, I would like to thank all the people who support the Burrillville Prevention Action Coalition. This group does critical work combating drug and alcohol abuse in our Town and meets at the Wallace F. Lees Public Safety Complex on the first Wednesday of the month at 5:00 p.m. EVERYONE is invited, and I would encourage you all to attend. In addition to BPAC, we also have the Burrillville Addiction Assistance Program ready to help any member of our Town that may be in need. PLEASE reach out to Michelle Harter at 401-701-9054 if it's you or a loved one. In a short time, both of these programs have become beacons for other cities and towns to emulate.

The Assembly Theatre has formed the Patrons of the Assembly group. This new non-profit is made up of many members of our Town with the purpose of keeping our arts and entertainment alive and well. They have a great passion for the Town and the theater, please come out and enjoy some of the many different and high quality performances that are being shown. Also, starting with May 19th and every third Sunday until October from 3:00 -7:00 p.m., we will have a collection of food trucks around the Assembly Theatre grounds offering a wide variety of culinary delights. Keep your eyes out for coming attractions!

I would like to encourage you all to purchase a pass for Spring Lake Beach. It's becoming a jewel, not just for Burrillville, but for our entire region and well worth the trip. In closing, I wish everyone a healthy, safe and enjoyable summer.

GO BRONCOS!

John F. Pacheco III



Town Manager
Michael C. Wood
X145
manager@burrillville.org

Comprehensive Plan

The State Mandated Town Comprehensive Plan was completed and approved by the state in 2018. The comprehensive plan sets forth long-term plans, goals and objectives for the Town. Our comprehensive plan was an interactive, public process resulting in a very proactive planning product. This plan sets the template for future activities of our Town Council, Planning and Zoning Boards and other departments and agencies of Town government.

The first two spin-off activities or projects from the comprehensive plan are Alternative Energy (including Solar) Planning and Land-Use in our F-5 Zone and the Environmentally Sensitive/Open Space areas of our community.

These will be public processes, so please watch for notices. Feel free to contact the Town Manager's Office, 568-4300 x 145 or Town Planner's Office, 568-4300 x 131 and please use the Town's e-subscriber service on our website for information.

New Water Service Line

The Town Council, working cooperatively with the Harrisville Water District and Burrillville Industrial Foundation, just completed "looping" or connecting existing "dead-end" water lines of Harrisville's primary water service. This project creates water supply redundancy in the system. Looping the water system allows water to flow both ways into the service area, thereby avoiding loss of service and/or fire protection that could occur with a dead end service.

The project connects the existing water line from Commerce Park, installing a new line down Route 102 to existing services on Central Street and Clear River Drive.

Our thanks to both Harrisville Water District and the Burrillville Industrial Foundation for a very successful joint venture.

Downtown Pascoag

The Redevelopment Agency is looking for tenants for its new buildings on Pascoag Main Street.

Total space available is 4,500 square feet and is available for lease or rent. Current plans have up to three (3) new units available ranging in size from 600 to 4000 square footage. However, the space is flexible and could be increased (or decreased) if needed and the space can be modified to accommodate a number of interesting and creative uses.

Please contact New England Economic Development Services at 401-658-0665 (office) or 401-440-1742 (mobile).

Did you Know?

Over the years, the Town has modified its zoning to allow a number of non-conventional uses for our property owners. A few of these are as follows:

Home Occupations:

A *home occupation* is an occupation when defined as an accessory use in a single-family dwelling, or a customary accessory building on any *residentially developed* lot in Town. A home occupation may include, but is not limited to, the following:

- Technology based services (telephone marketing, computer network services);
- Dressmaking, tailoring;
- Handicrafts, woodworking;
- Fine arts (painting, sculpturing, photography);
- Musical instruction (no more than two students concurrently);
- Professional services (accountant, engineer, architect, lawyer or other recognized professional person).

Mixed Use Buildings:

A *mixed use building* is a structure with a commercial use that allows for a single-dwelling, or multiple dwelling units, within a commercial building, in addition to the commercial use. A single dwelling unit is allowed by right within the *village and general commercial districts*. Multiple dwelling units may be allowed by special use permit in *general commercial districts*. Each dwelling unit shall contain a minimum of 600 square feet of space, and property owners have to provide proof of adequate off-street parking for the residents of the dwelling unit(s).

Mix-Use Tax Stabilization (44-3-9.3):

The Town Council was successful amending its tax stabilization law to add mixed-use properties.

Originally this law only provided for tax stabilization for commercial and manufacturing facilities. Included are incentives to build new, replace, reconstruct, expand or remodel existing buildings, etc.

As mixed-used properties are important to the make-up and future development of our Town, the Town Council decided to include these properties (and long-time Burrillville property owners) in the program.

The state approved the Town Council's initiative in June of 2016.

The Town is looking to improve on and to expand property uses that meet today's changing world and quality of life. New ideas to meet your challenges and the changing life/work environments are hence considered.

Spring Lake Beach

The Town Council and beach staff has worked hard to make Spring Lake Beach a wonderful family-friendly facility and a local destination. Please consider a resident family pass; it's very affordable and allows Burrillville families use of the facility whenever they want (when the facility is open).

Spring Lake will open Memorial Day Weekend, from Saturday, May 25th to include Monday, May 27th from 10:00 a.m. to 6:00 p.m. The beach will open full time (7 days a week weather permitting) on June 1st to August 25th from 10:00 a.m. to 7:00 p.m. Earlier closing will begin on Monday, August 26th thru September 2nd from 10:00 a.m. to 6:00 p.m.

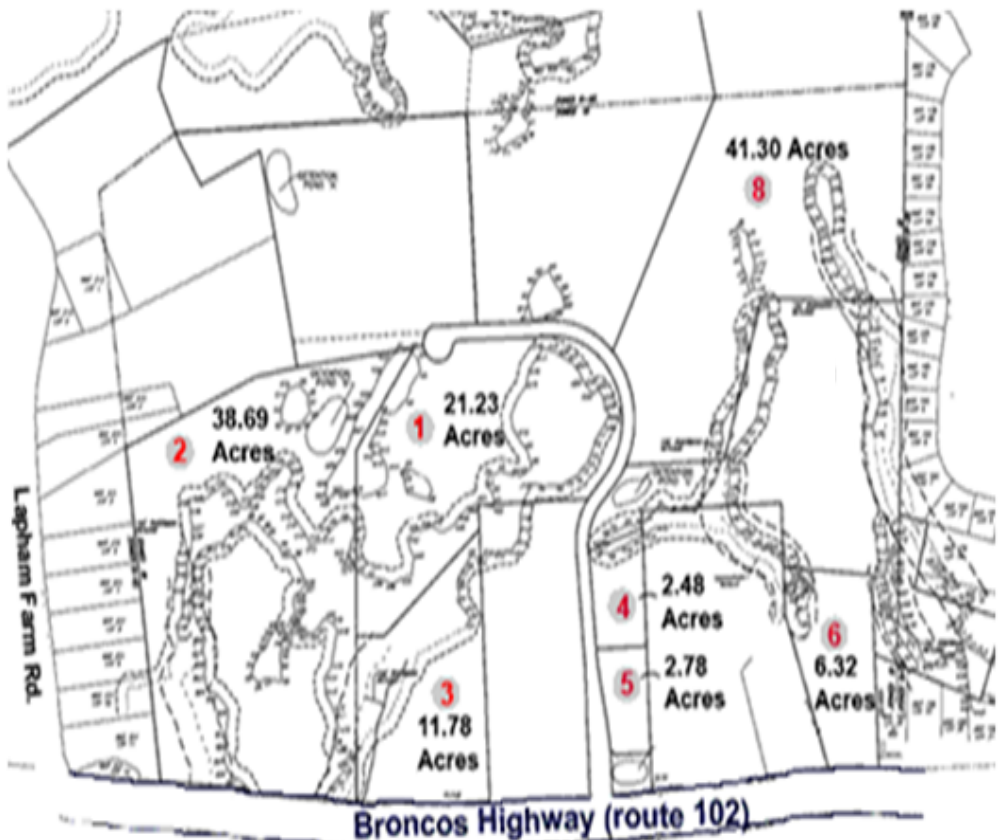
See you at the beach!

We are looking for businesses generating jobs.

***The Town has acreage for sale
(with water and sewer available)
at Commerce Park.***

***If you or someone you know is looking to locate or expand a business,
please contact the Town Manager or Town Planner at 568-4300 ext.145.***

***Commerce Park is Located off Route 102 between Central Avenue and Lap-
ham Farm Road.***



**Commerce Park
Burrillville, Rhode Island**

Burrillville Redevelopment Agency

James Langlois, Chairman

DownTown Pascoag Redevelopment District

You may have seen the Historic Village of Pascoag signs that have been installed at the beginning of the Bridgeway and at the end of Sales Avenue facing South Main Street. These attractive signs welcome you to DownTown Pascoag Village feature a photo of the Sayles Mill on the front. The rear of the sign will feature a short history of the area textile mills and their impact on the area. A very nice addition to the DownTown district and another step in many planned enhancements.

Looking to open or relocate a business to DownTown Pascoag?

The Redevelopment Agency is now leasing space at 75-81 Pascoag Main Street. This attractive building features street level space from 600 SF to 4,000 SF that can be fit out to meet your needs. On Street and Municipal parking available. Be part of the village's redevelopment. Call New England Economic Development Services at 401-658-0665 or Scott Gibbs at 401-440-1742.



Nasonville Redevelopment District Planning Update

The Agency is entering its second year of planning for the proposed Nasonville Redevelopment District and Village concept. The first year included an assessment of current conditions in the area. A photo inventory of buildings and natural scenery. Public meetings to gather input from residents and business owners. Traffic and utility studies, and an overview of the vacant Nason Mill (Turex Plant). This information was gathered and presented at a well-attended meeting held on January 28th. Much of the conversation focused on traffic issues and pedestrian safety. Recreation opportunities and access to the Branch River were also discussed. Redesign of the stone arch bridge on Route 7 is currently being reviewed by the state DOT and Crossman Engineering. This year we will evaluate water and sewer needs, area land use, modify existing plan, develop an execution budget, and create a Redevelopment Plan.

Stillwater Mill Redevelopment District

The Redevelopment Agency is planning to install permanent rest room facilities at the Pavilion. This would help alleviate usage of the Library's facilities during public events and make renting the Pavilion for private functions more attractive. It is our hope to have new facilities installed for summer 2019.

Rent the Stillwater Mill Pavilion for your event. This centrally located venue is the perfect location. Water and electricity. Plenty of parking, easy access, and a large lawn area make this a great outdoor event location.

One Day Event Rental Fee is \$100. The Hourly Rate is \$30 for a 3 hour minimum.

Adopt-A-Spot
568-4300 x145
glabossiere@burrillville.org

We would like to thank all current sponsors for their generous gift of time and money which enhances the beauty of Burrillville, the Town we call HOME.

- | | |
|--|---|
| ◇ American Legion Hall, Post 88 | Pascoag Bridgeway, Veterans' Park |
| ◇ Bella Restaurant | Restaurant Entrance on 102 |
| ◇ Boy Scout Troop 100, Pascoag | Jesse Smith Library, Top of Stairs |
| ◇ Burrillville Conservation Commission | Wallum Lake Road Canoe Launch |
| ◇ Burrillville Conservation Commission | Route 102 Gateway |
| ◇ Burrillville Democratic Committee | Jesse Smith Library, right side |
| ◇ Burrillville Garden Club | Pascoag Bridgeway |
| ◇ Burrillville Garden Club | Gonyea Park Sign |
| ◇ Burrillville Garden Club | Clean ups throughout Town |
| ◇ Burrillville Industrial Foundation | Commerce Park Entryway |
| ◇ Craig Cayer | Spring Lake Beach Island Entrance |
| ◇ Harrisville Fire Department | Firefighters' Memorial Park |
| ◇ Harrisville Fire Dept. (Hose Co.) | Traffic Island in front of Fire Station |
| ◇ Lawn & Garden –Chris Thompson | White Mill Park, between signs |
| ◇ Lions Club | Lewis Bleiweis Park |
| ◇ Lions Club | East Ave. & Harrisville Main |
| ◇ Lynch Fence Co. | Corner of River St. & Chapel |
| ◇ Natural Resource Services, Inc. | Clocktower Square |
| ◇ Pascoag Pack 1 Cub & Boy Scouts | White Mill .Park Entrance |
| ◇ Pathfinders 4-H Club | Freedom Park Sign |
| ◇ The Spink Family | Bridgeton Mill Village Plantings |
| ◇ Tobin Style Bootcamp | Tinkham Land Entrance |
| ◇ Glennis Estrabrook | Parks & Rec Office |

The Adopt-A-Spot program draws on the generosity of local businesses and organizations to help beautify our Town. Each space is uniquely designed and kept up by the sponsors. Please take notice of their beautiful work throughout the spring and summer season and consider adopting a spot of your own.



**Available
Locations**

Beckwith Bruckshaw
Memorial Lodge
Skate Park
Spring Lake
Beach Sign
Summer & Shea
Lane Triangle



Please support local business and service organizations!

Finance Director
Michael P. Larocque
X147
finance@burrillville.org

FYE 2018 Audit

The Town of Burrillville's Financial and Single audit for fiscal year ending June 30, 2018 has been completed and was presented in February to the Town Council. The Town continues to maintain a strong financial management operation for the citizens of Burrillville.

2018 TAX BILLS

Real Property, Motor Vehicle & Tangible 2018 Bills

Due dates are as follows:

- 1st Qtr. - July 26 thru August 13, 2018
- 2nd Qtr. - October 15 thru November 1, 2018
- 3rd Qtr. - January 15 thru February 1, 2019
- 4th Qtr. - April 15 thru May 1, 2019

2018 TAX BILLS

The 2018 Real Estate and Motor Vehicle taxes were mailed July 10, 2018.

Need a reminder?

Sign up on our website "**E-subscribe**" to receive quarterly reminders of upcoming due dates. Be sure to check off "Tax Collector".

"Go Green"

Help us save you money by supplying our office with an **email address**. Receive payment receipts, correspondence, notices. Copies of your Tax Bills can also be received upon request through the Tax Assessor's Office.

Payment methods:

CASH, CHECK OR MONEY ORDER by mail or in office

What are the benefits to using our free AUTOMATIC CLEARING HOUSE (ACH) {Auto debit}?

- 1) Eliminate blocks at the Division of Motor Vehicles
- 2) Have two extra months to pay your tax bills when paying monthly
- 3) No interest charges
- 4) Save on postage
- 5) No worries about payments being lost in the mail
- 6) Receive monthly reminders of debit

Applications are available online at www.burrillville.org or in the Tax Office. Please allow one week to set up or cancel the debit in writing or email. *Important Note: when using online bill pay thru your bank, we actually receive a physical check not an electronic payment, which allows for delays and/or lost payments. If a release to the DMV is needed, these checks cause a 10 Business Day delay.*



DEBIT OR CREDIT CARD in office or online at www.burrillville.org, **NO** payments accepted over the phone. Your PIN is listed on your tax bill. If you do not have your bill, please contact the Collector's Office. **All card payments are assessed a convenience fee of 3% with a minimum of \$2.00.**

DROP BOX is available near the rear entrance of the Town Hall for your convenience. Please **do not put any cash in the drop box**, checks and money orders only.

Any returned checks/ACH are assessed a \$35.00 fee.

The Town participates in state programs such as placing blocks with the RI Registry of Motor Vehicles (DMV) and RI Income Tax Refund Offset program to aide in the collection of delinquent taxes.

Did not receive a bill?

The failure to receive a bill does not eliminate the requirement for a timely payment of any taxes that are due. Need a copy of your bill, contact the Tax Assessor's office 568-4300 x 181.

Contact the Tax Collector's office for balances due 401-568-4300 x 184.

Returned mail is re-mailed if a new address can be identified. If you move, please contact the Tax Assessor's office and the DMV to update your mailing address.

Tax bills are mailed by the 2nd week of July each year. If you do not receive a bill, please contact the Assessor's Office.

Motor Vehicle Registrations/Renewals

Registration blocks are sent to the DMV for all delinquent motor vehicle taxpayers. If a block is placed with the DMV, ALL motor vehicle taxes under your name must be paid in full by cash, money order, or credit card. A personal check will delay the release by 10 business days. Note, the registration block may take up to 48 hours to be released by DMV after the request for release is made by the Tax Collector's office.

Financial Difficulties?

If you are having financial difficulties, please contact the Tax Collector's office as soon as possible. Early intervention is the key to the Town's ability to be of assistance.

Tax Assessor

Jennifer Mooney

X125

assessor@burrillville.org

All taxpayers are welcome to stop in the Assessor's Office for a copy of your property record card and the Assessor's map showing your land lines. There is no charge to the homeowner for this info.

If you have moved in the last year, please check with the Assessor's Office to be sure your current address is on file with us. The law requires you to notify the Division of Motor Vehicles within 10 days of any change of address if you have any registered vehicles.

We are currently in the second year of the Motor Vehicle Phase-Out Program. The phase-out plan uses the state's values and, by state law, the Town must charge excise tax on 90% of the value. Vehicles that are 15 years old or older are no longer taxed.

EXEMPTION INFORMATION

Exemption Type	Eligibility and Notes
Senior	Annual Application, must be 62 years of age, ownership & occupancy of residential property in Burrillville 3 years prior to filing of exemption, deadline to apply is December 31 st . <u>One</u> exemption per household. Applied to real estate <u>only</u> .
Disability	Annual Application, 100% disabled, own & occupy a single family or a two-family residential property for one year prior to filing for exemption, deadline to apply is January 31 st . Applied to Real Estate <u>only</u> .
Veteran	Served in Vietnam or prior war or served during a conflict specified in state law. May be applied to vehicle only if the Veteran has no real estate.
Blind	Statement from ophthalmologist.
Gold Star Parent	Parents of a child who dies while in the service.
Prisoner of War	Need letter from VA stating applicant was a POW.
Historical Cemetery	For real estate where a historical cemetery is located & registered pursuant to RIGL 23-18-10.1 and whereas the owner of the property shall maintain and preserve the historical cemetery. Deadline to apply is December 31 st .

Town Clerk
Louise R. Phaneuf
X124
Townclerk@burrillville.org

Office of the Town Clerk

- ◆ Marriage Licenses
- ◆ Birth, Marriage and Death Certificates
- ◆ Dog Licenses
- ◆ Hunting & Fishing Licenses
- ◆ Notary Public
- ◆ Probate Court
- ◆ Recorder of Deeds
- ◆ Voter Registration

Town Council

Regular meetings of the Burrillville Town Council are scheduled for the second and fourth Wednesday of each month at 7:00 p.m. in the Town Council Chambers. Schedule changes are posted at the Town building and on the Town website.

To appear before the Town Council, contact the Town Clerk's office for the procedure for submitting an agenda request.

Town Council agendas, minutes and videos can be searched from the video archives page.

1. Visit www.burrillville.org
2. Click on the Government tab at the top of the home page.
3. There is a link to meeting videos at the bottom of the right-hand column.
4. Use a key word in the "search archive" feature on the page. The search result will be a link to the point on the video where the searched item was discussed. The result will also include the agenda and minutes where the item is mentioned.

Town Council Members			
Name	Address	Phone	Term
John F. Pacheco III	901 Colwell Road Harrisville, RI 02830	309-1437	11/30/2020
Stephen N. Rawson	P.O. Box 332 Harrisville, RI 02830	479-6909	11/30/2022
Dennis M. Anderson	593 Whipple Road Pascoag, RI 02859	339-0047	11/30/2022
Jeremy Bailey	585 Wallum Lake Road Pascoag, RI 02859	402-0289	11/30/2020
Donald A. Fox	105 Harrisville Main Street Harrisville, RI 02830	265-9674	11/30/2022
Amanda Gingell	45 Maple Drive Harrisville, RI 02830	578-6182	11/30/2022
Ray Trinqué	300 Centennial Street Pascoag, RI 02859	568-0858	11/30/2020

Fishing Licenses

The Town Clerk's office is an authorized sales agent for the Rhode Island Department of Environmental Management (DEM) and can issue all fishing and hunting licenses and permits from a fully web-based system. There is an Enhance Access Fee of \$2.00 per license and \$0.50 per permit for residents and \$3.00 per license and \$1.00 per permit fee for nonresidents.

Notary Public

Notary Public services are available at the Town building during regular hours. There is no fee for this service.

Marriage Licenses

- **Rhode Island residents** Couples should apply for a marriage license at the Clerk's office in the city/town where one (or both) of the parties reside. If at least one of the parties lives in Rhode Island, the marriage license is valid in any city or town and the ceremony may take place anywhere in Rhode Island.
- **Non-residents** If neither party lives in Rhode Island, the license must be obtained at the Town Clerk's office in the city or town where the ceremony will take place.

Marriage licenses cost \$24. The license is valid for 90 days. Call the Town Clerk's office for documentation requirements.

Vital Records

The Town Clerk's office provides certified copies of birth, death and marriage records.

- Vital records are registered in the town or city in which the event occurred, or the city or town where the person was living.
- Certified birth records for people born in Rhode Island in 1960 and later can be issued at all city and Town Clerk's offices.
- The fee for records requested by mail are \$25.00; fees for records requested in person in the Town Clerk's office are \$22.00. Additional copies of the same record are \$18.00 if obtained at the same time.
- To receive a certified copy of a birth, death or marriage record via mail you must send a readable copy of your picture identification and a completed application which you can find on the Town Clerk's page of the Town website. If you cannot access the application, please provide the following information:
 - the name on the birth, death or marriage record
 - the date and city/town where the event occurred
 - your relationship to the person named on the record
 - why you need the record
 - for births only, provide the name of the father and the mother's maiden name
 - your signature and printed name
 - your mailing address and your home phone number in case we need to contact you
 - send payment with your request, check or money order

Burrillville Board of Canvassers

Louise R. Phaneuf, Clerk

The Board of Canvassers handles election matters for the Town of Burrillville. We are located in the Town Clerk's office.

Rhode Island Voter Information Center: <http://www.sos.ri.gov/elections/voters/>

- Check your voter registration
- Find your current elected officials
- Locate your local board of canvassers



How do I register to vote?

- Rhode Island now has automatic voter registration. Now, when you interact with the Department of Motor Vehicles, you will be automatically registered to vote.
- Online at the Voter Information Center: <https://vote.sos.ri.gov/>.
- Complete a voter registration form which may be obtained at the Burrillville Board of Canvassers at the Town building or the RI Board of Elections. You can download the form from the State Board of Elections website: www.elections.ri.gov/voting/



Voter ID became law in 2014. Under this law (RIGL §17-19-24.2), all voters are required to present valid photo identification prior to voting at the polls. If you do not have a valid ID, the

Rhode Island Department of State will issue you a free voter photo ID card. See the Department of State's website, <https://vote.sos.ri.gov> for additional information on the program, or call (401) 222-2340.

Elections Publications

The Rhode Island Department of State prepares many elections-related publications, including a guide for candidates and elections calendars. You can find a copy online at their website: <http://sos.ri.gov/divisions/Elections/Get-Informed/election-publications>. Copies are also available at the Burrillville Town Building.



Department of Public Works

Jeffrey M. McCormick, P.E., Director
65 Union Avenue, Harrisville, RI 02830
Phone: 401-568-4440 Fax: 401-568-9469

dpw@burrillville.org

Hours: Mon. - Fri. 6:30 to 3:00

Town Senior Minibus

The Town of Burrillville Department of Public Works offers a minibus transportation service for eligible residents of Burrillville. To be eligible for this service, Burrillville residents must be 62 years old or older or totally disabled. The minibus operates on a regular schedule and will pick up any eligible Burrillville resident upon request. The schedule is as follows:

- Mondays, Tuesdays and Thursdays – bus available for doctors' appointments between 9 a.m. and 2 p.m.
- Wednesdays – bus available for grocery shopping trips to the Village IGA Marketplace in Pascoag
- Fridays – bus is available for scheduled trips for up to 12 people for excursions or shopping trips around the state

This bus service is available on a first come, first serve basis, and is free of charge to Burrillville residents.

Please call Allison at 568-4440 ext.201 with any questions or to schedule the minibus.



***Alternately, all residents can call RIPTA Flex Service for trips within designated areas in Burrillville or North Smithfield.
Call 1-877-906-9539 (fares apply)***

Maintenance Projects

The Town of Burrillville Department of Public Works continues to work on regular maintenance projects of street sweeping, road side brush cutting, tree trimming, catch basin cleaning, roadway repairs and drainage improvements.

- **DPW Small Projects** – various drainage improvements throughout Town
- **DPW Summer Crew** – The summer crew will be cutting grass, weed wacking and collection of trash at all of the town parks and recreational facilities.

Construction Projects

Construction projects also to be completed or undertaken this construction season:

- **DPW Facility under Construction** – Clear River Dr., Oakland RI.
- **Renovations to Burrillville Animal Shelter**- Clear River Dr., Oakland.
- **102 Water Loop Addition to HFD** - to be completed in spring, Harrisville.
- **Buxton Street** – Reclamation and repaving, Nasonville.
- **Oakland Park** – Street hockey rink, pickleball court, river access.
- **High Street Park** – Passive recreation, river access, Pascoag.
- **Dog Park** - Clear River Dr., Oakland RI.

- **Neighborhood Projects** – Small drainage improvement projects throughout Town.

DPW Engineering Projects – The Director of Public Works has been working with consultants on numerous future construction projects to prepare feasibility studies, construction plans, technical specifications, permits and various annual reports.

- Sayles Ave Reconstruction– Design of roadway widening and sidewalk reconstruction
- Burrillville Middle School Track/field design
- Recreation Center expansion
- 2020 road reclamation design/construction package
- Pavement Management Program – ongoing road rating system
- RIPDES annual storm water reporting
- Landfill groundwater and gas monitoring

State Projects

The DPW is coordinating with the RIDOT regarding the schedules, design and construction of State projects within the Town of Burrillville. These projects include:

- **RIDOT, Railroad Ave Bridge - Repair and replacement. Completed in December.**

Burrillville is a beautiful place to call home!



DPW, Refuse & Recycling
Andrea Hall, Recycling Coordinator
401-568-4440 x12
ahall@burrillville.org
www.burrillville.org/refuse

Recycle Coordinator	401-568-4440 x12	ahall@burrillville.org
Waste Management	1-800-972-4545	
RIRRC	401-942-1430	www.rirrc.org

Important Recycling Reminders

RIGID PLASTIC

- Only items **composed entirely of rigid plastic** are recyclable in the Rigid Plastic container at Whipple Ave. No metal, no motors, no batteries---please remove these items before recycling.

WEEKLY SET OUT REMINDERS

- Plastic bags are NOT allowed in the recycle cart. No bags, no bags of bags, and no bagged recyclables.
- Please keep carts 3 feet apart and at least 3 feet from obstacles such as mailboxes, cars, etc.
- Lids must be fully closed.

REJECTED LOADS

- Residents are doing a great job, however there are many items still ending up in recycling carts that are not recyclable. Recycling loads that are contaminated or contain prohibited items may be rejected at the MRF. A rejected load costs the Town \$250, and all the contents of that load must be landfilled at \$47/ton. Please do your part to keep the following items (all seen recently in the recycling) OUT of your recycling bin:

Food, leaf and yard debris, construction and demolition debris, clothing, textiles, tarps, plastic bags, recyclables IN plastic bags, diapers, tires, chains, cables, wires, ropes, hoses, household hazardous waste, propane tanks, scrap metal and paint.

Please take the time to review the list of accepted items at www.RecycleTogetherRI.org and contact the Recycling Coordinator with any questions.

Thank you for helping to Keep Burrillville Beautiful! Thank you for recycling!!

Recycling in our Schools



W.L. Callahan fourth grade students are working hard to raise awareness of the environmental effects of Styrofoam, and to ultimately remove it from their school. The Stomp Out Styrofoam project was created in 2018 by Julia Breault, Adam DeCesare, and Sean Zanella who were 3rd graders at the time. This school year, each Friday during the 4th grade lunch period, the group

encourages students to only take a Styrofoam tray if absolutely necessary. Students who use a tray then hand it off to the team, and they are washed and saved. The project will span the entire school year, at the end of which all of the saved trays will be made into a sculpture to raise awareness at town events. The original group of 3 students has quickly grown to over 15, and has been featured on ABC 6 and NRI NOW news. They created an active Instagram page [#stompoutstyrofoam](#). The program is supported by grant funding from RIRRC which was used to purchase t-shirts and incentive bracelets, and to revamp the school's recycling stations in the cafeteria. The students have a long term goal of not only eliminating Styrofoam from their school cafeteria, but eventually from the entire district. Way to go Stomp Out Styrofoam crew!!!

Upcoming Recycling Events

April 27th—Annual Earth Day Cleanup—Kickoff at the Town Garage (DPW) at 8:30am. Cleanup runs from 9:00 a.m. to 1:00 p.m. Coffee, donuts, T-Shirts, trash bags and gloves will be provided to all participants. Community Service Certificates will be printed on site. Giveaways & Raffles! Can't make the event but still want to cleanup your neighborhood or favorite park? Contact the Recycling Coordinator for more information or to sign up.

Month of April—Earth Day Poster Contest—The Burrillville Parks and Recreation Department, Jesse M. Smith Memorial Library & The Pascoag Utility District are teaming up to hold a poster contest in honor of Earth Day. Students that are residents of Burrillville are encouraged to create a POSTER that demonstrates how you can help or protect the environment by recycling or saving energy. Twelve posters will be chosen to create The 2020 Environmental Education Calendar which will contain energy conservation and recycling information. A calendar will be given to the 12 students whose artwork is featured in the calendar and 6 Cash Prizes will be awarded in 2 Categories: Best Recycling & Best Energy Conservation Posters. Contact Jesse M. Smith Memorial Library: 710-7800 or the Recycling Coordinator for more information.

Earth Day Poster Contest Awards Ceremony—An award ceremony will be held at the Jesse M. Smith Memorial Library to honor the winners of the Earth Day Poster Contest. Light refreshments will be served. ****Date to be announced**** Contact the Jesse M. Smith Memorial Library: 710-7800 or Recycling Coordinator for more information.

May 11th- Eco-Depot, Shred & E-Waste Collection Event - Free event at the Whipple Ave Recycling and Compost Facility. 8:00 a.m.-1:00 p.m. Residents can properly dispose of **Hazardous E-Waste** (computers, monitors, laptops, TVs etc.) **shred sensitive documents**, and dispose of **Household Hazardous Waste** (oil based paint, gasoline, varnishes etc.). Residents are limited to two banker's boxes of documents per person to minimize wait time. Shred will continue until 1:00 pm or until the truck is full. Whipple Ave will be open for regular service during the event. Residents should call RIRRC to make an appointment for Eco-Depot items only. Appointment not needed for E-Waste or Shred. Contact the Recycling Coordinator for more information.

September 7th—Green Festival—Event runs from 10:00 a.m. – 2:00 p.m. at the Stillwater Mill Complex. A rain date is scheduled for September 21st. Visit with Green Vendors, learn about energy conservation and recycling at this community event offered by the Pascoag Utility District and Department of Parks and Recreation. Make a recycled craft and enjoy food and beverages prepared by a local food truck. For more information, contact Desarae Dolan at the Pascoag Utility District: 401-568-6222 x223 or ddolan@pud-ri.org or the Recycling Coordinator.

Field Trips- It's not too late to book a field trip to the landfill to see how the single stream sorting process separates our Town's recyclables. Field trips are free! If you would like to book a field trip for your school or group, please contact the Recycling Coordinator.

Delays Due to Weather Events or Holidays

There are three ways to stay up to date on changes/delays:

1. Visit the Refuse & Recycling webpage
2. Check the Refuse and Recycling Voicemail Message
3. Sign up to receive Public Notice Emails on the main page of the Town website www.burrillville.org/

As soon as Waste Management notifies the Town of any issues causing a delay or cancellation, that information is made available to residents. Information is updated immediately even when a decision is made after normal working hours, including over the weekend.

Proper Weekly Set Out

- Trash and recycling carts are the property of the Town. No markings are permitted on the cart other than in the white address label on the top of the lid.
- Place one cart on each side of the driveway **or** place carts 3 ft. apart from one another and from other obstacles.
- Place carts no more than 3 ft. away from the curb or road edge.
- Arrows on the cart lid must face the street.
- Cart lids must be fully closed with no material sticking out.
- No material may be placed on top of the cart lid.
- Residents are allowed one BLACK lid Town-owned cart for trash, and one YELLOW lid Town-owned cart for recycling.
- Place trash and recyclables curbside no more than 24 hours before and no later than 7:00 AM on your scheduled collection day.
- Excess trash can be placed next to the cart in a Town approved Overflow Bag.
- Excess recycling can be brought to the Whipple Ave Facility and placed in the Mixed Recycling dumpster.

Cart Maintenance

Residents are responsible for periodic cleaning/disinfecting carts, properly storing carts when not in use, and cart replacement due to normal wear and tear. Contact

the Recycling Coordinator for repairs to cart wheels, axles, lids and hinge pins.

Exchanging Carts

Residents can exchange their 65-gallon Town owned trash cart for a larger 95-gallon cart for a one time charge of \$50. 65-gallon recycling carts can be exchanged for a larger 95-gallon recycling cart for no fee. Cart(s) to be exchanged must be clean and in good condition. A \$15 administrative charge will be assessed if the Town delivers and exchanges the cart(s). Residents may exchange their 65-gallon carts for smaller 35-gallon carts for no fee. A \$15 administrative charge will be assessed if the Town delivers and exchanges the cart(s). No administrative charge will be assessed if the resident exchanges the cart(s) at the Department of Public Works. Exchanged carts are subject to availability.

Recyclable Items Accepted in the YELLOW Lid Recycling Cart

- Milk & juice cartons
- Juice boxes (juice pouches and straws are not accepted)
- Glass containers
- Plastic containers (up to 5 gallons)
- Metal and aluminum cans, metal lids, foil & pie plates
- Mixed paper, newspapers and inserts
- Thin cardboard –cereal/pasta boxes, tissue boxes etc. (**No refrigerated containers: beer, soda or frozen food boxes**)
- Corrugated cardboard (must be flat, cut into pieces that fit loosely in cart, not larger than 3' x 5')
- Pizza boxes that are not greasy

Empty & rinse all recyclables. Replace plastic caps and trigger sprays. Place recyclables loose in the cart. **No plastic bags in your recycle cart.**

Overflow Bags

Residents with excess trash can purchase Town Overflow Bags at DPW and IGA. Bags are \$3 each and are sold in sleeves of 5 of IGA. Residents can purchase single bags at DPW.

Contact Waste Management If Trash/Recycling was not Collected



Whipple Ave. Recycling & Compost Facility 350 Whipple Avenue, Oakland

Open every Wednesday
& Saturday
from 9:00 am to 1:00 pm,
weather permitting.

Proof of Residency is
required to use the
Whipple Ave Facility.

**Items ACCEPTED at the Whipple Ave.
Recycling & Compost Facility**

Christmas Trees: First two Wednesdays and Saturdays in January from 9:00 a.m. to 1:00 p.m. Trees must be cleaned of all ornaments and tinsel. No plastic bags permitted.

Clothing & Textiles: Includes items suitable for reuse and items to be processed as rags. Place in Clothing & Textile Bin at The Whipple Ave Recycling & Compost Facility.

Cardboard: Cardboard of all sizes including pieces larger than 3'x5' can be placed in the cardboard dumpster.

Mattresses/Box-Springs—No futon mattresses, mattress pads, or toppers. No severely damaged, wet, twisted, frozen or soiled mattresses.

Metal (scrap) – bicycles, rims, lawnmowers (drain oil/gas), grills (cleaned), exercise equipment, pipes, metal cabinets, and other miscellaneous scrap metals.

Non-Freon Appliances – stoves, washers, dryers, dishwashers

Plastic (Rigid) - Children's toys, hose reels, lawn furniture, etc. Only items **composed entirely of rigid plastic** are recyclable in the Rigid Plastic container at Whipple Ave. No metal, no motors, no batteries

Tires— must be off the rim. Limit of 4. No oversized tires.

Yard Waste – brush must be 4" diameter or less & cut in 5' lengths or less. Place leaves in paper bags only.

Disposal of Items Not Accepted in Curbside Carts

Appliances/White Goods - Appliances are collected twice per month for a fee of \$19 per item. Appliances include washers, dryers, stoves, refrigerators, air conditioners etc. Call Waste Management to schedule a pickup. Waste Management will not refund residents for items scheduled for pickup that disappear prior to the collection date. Non-Freon appliances can be brought to Whipple Ave for no fee. Local metal recyclers advertising in the Bargain Buyer will often pickup Freon appliances at no charge.

Bulky Items - Bulky items are collected twice per month for a fee of \$16 per item. A bulky item is an item of solid waste that is not recyclable and is too large to fit inside a bag placed inside the Town provided cart. Examples include couch, chair, desk, rugs, carpets, etc. Call Waste Management to schedule a pickup. Waste Management will not refund residents for items scheduled for pickup that disappear prior to the collection date. Residents with a large amount of bulky items can utilize the Bagster Program. Contact the Town's Recycling Coordinator for information on Bagster. Bulky items left curbside for a period of more than one day are in violation of Section 22-43 of the Solid Waste Ordinance and may be subject to fines and penalties.

Books— Books that are in good condition can be placed in the Kiducation bin at DPW.

Compact Florescent Light Bulbs (CFLs) — Bring to an Eco-Depot, or check your local hardware store.

Computer Ink Cartridges – Bring to DPW to be donated to the Burrillville Lions.

Construction/Demolition Debris – Anything that was or could be attached to your home is considered construction debris. Examples include windows, shower doors, wood, bathtubs, toilets, sheet rock etc. Bring to RIRRC, hire a private hauler, or use the Bagster program.

Excess Waste Due to a Large Cleanout or Renovation—Hire a private hauler or use the Bagster Program. Contact the Town's Recycling Coordinator for information on Bagster bags.

Hazardous Electronic Waste (E-waste) – TV's, computers, monitors and laptops – bring to one of five state collection including RIRRC. Call RIRRC for more information and hours.

Hazardous Household Waste – chemicals, fertilizers, propane tanks, oil based paint, pool chemicals, gasoline, transmission fluid, etc. - Bring to Eco-Depot. Contact RIRRC to schedule an appointment.

Medical Syringes – Place in hard plastic container (laundry detergent bottle, bleach bottle etc.) seal cap tightly with duct tape and place container in the trash.

Plastic Bags – tie in a knot and drop off at any ReStore bin, including Brigido's IGA.

Pellet Bags –drop off at any ReStore bin, including Brigido's IGA.

Prescription Drugs –Bring to Burrillville Police Department. Do not flush down the toilet.

Styrofoam- Bring to RIRRC. Foam must be clean, dry and bagged in clear or translucent bags. No spongy foam (#1 Fan fingers etc.) and no packing peanuts.

Used Cooking Oil — Bring to RIRRC.

Used Motor Oil, Oil Filters, Car Batteries – Dispose of at DPW during normal business hours. 5-gallon limit for motor oil.

Refuse & Recycling HOLIDAY Collection Schedule

When your regular collection day falls on a holiday,

trash and recyclables are delayed by one day for the remainder of the week.

Monday's trash is collected on Tuesday, Tuesday's on Wednesday etc.

2019 Holidays that delay Trash & Recycling Collection

New Year's Day	Tuesday, January 1 st
Martin Luther King, Jr. Day	Monday, January 21 st
Memorial Day	Monday, May 27 th
Independence Day	Thursday, July 4 th
Victory Day	Monday, August 12 th
Labor Day	Monday, September 2 nd
Columbus Day	Monday, October 14 th
Veteran's Day	Monday, November 11 th
Thanksgiving Day	Thursday, November 28 th
Christmas Day	Wednesday, December 25 th

Parks & Recreation

Andrea Hall, Director
Carol Conway-Administrative Aide
92 North Main Street, Pascoag
401-568-9470 Fax: 401-568-9457
parksandrec@burrillville.org

ANNUAL EVENTS

Annual Easter Event: The Annual Breakfast with the Easter Bunny and Egg Hunt will be held on Saturday, April 6th at Branch River Park, adjacent to the Middle School. Breakfast will be at 10 a.m. in the Burrillville Middle School cafeteria. Admission to the breakfast includes an Easter Basket raffle ticket, cupcake decorating and the opportunity to take pictures with the Easter Bunny. Tickets must be purchased in advance by March 25th. Tickets are limited – first come, first serve. No tickets will be sold at the door. There will be free face painting and a craft with staff from the Jesse M. Smith Memorial Library. A raffle will take place with all proceeds benefiting the Burrillville Weekend Snack Pack Program which provides needy kids in Town with food for the weekend. The Annual Egg Hunt begins at 11am for ages 8 and under. The Egg Hunt is free! Participants will be divided into three age categories and will also have the opportunity to participate in raffles and take pictures with the Easter Bunny. The Jesse M. Smith Memorial Library will again be hiding 25 golden eggs. Participants who find the golden eggs can redeem them at the Jesse M. Smith Memorial Library for eggciting prizes. There is a rain date of April 13th for the Egg Hunt. The Breakfast is rain or shine. For more information about the Easter event contact the Parks and Recreation Department.



Burrillville Earth Day: The Parks and Recreation Department along with the Public Works Department and the Burrillville Lions Club are planning their annual Earth Day Cleanup on Saturday, April 27th from 9:00 a.m.-1:00.p.m. Coffee, donuts, T-Shirts, trash bags and gloves will be provided to all participants. Kick-off at 8:30 a.m. at the Burrillville Town Garage (DPW). This is a great event for anyone needing community service hours, and certificates will be printed on site. Can't make the event but still want to cleanup your neighborhood or favorite park? No problem, we will work with you to arrange pickup of supplies for your cleanup. Contact Andrea Hall at the Refuse & Recycling Department for more information or to sign up. Join us to help Keep Burrillville Beautiful!



FAMILY FAIR :This year's "Old Time Family Fun Fair" is scheduled for June 15th with a rain date of June 22nd. The fair will once again be held at the Stillwater Mill Center and will be a collaboration between the Parks and Recreation Department, the Farmer's Market, and the Jesse M. Smith Memorial Library. The Fair will feature refreshments, games & activities, demonstrations, face painting, old time photo booth, pie eating contest and informational booths. There will be food trucks and Anabel's Ice Cream and plenty of fun for the whole family! There will be several

raffles all to benefit the Burrillville Weekend Snack Pack Program. We are looking for **dedicated volunteers** to assist with the event – community service certificates will be provided. Please contact the Parks and Recreation Department for more information.

NORTHERN RHODE ISLAND RELAY FOR LIFE

Mark your calendars for the annual Relay for Life of Northern Rhode Island! The event will be held at the Smithfield High School track and will kick off at 2:00 pm on Saturday, June 15th and continue until 11:00 pm. All proceeds benefit the American Cancer Society, which helps save lives, celebrate lives, and lead the fight for a world without cancer. Relay For Life is a family-oriented event, where participants can walk or run on a track to raise donations and awareness. Former and current cancer patients, their families, and the public are invited to take part in this exciting team relay event and we welcome the public. The teams consist of individuals representing corporations, clubs, organizations, families, friends, caregivers and survivors. If you would like more information about Relay for Life, or to donate or sign up a team, please feel free to email Heidi Thompson at heidi.thompson@cancer.org or visit our website at www.relayforlife.org/northernrhodeisland.

THE BECKWITH/BRUCKSHAW LODGE (COMMUNITY RECREATION CENTER)

ONGOING PROGRAMS

Program	Location
After School Multi-Sport	Levy, Callahan, Steere Farm
Art Classes	Levy, Callahan, Steere Farm
Fencing	Levy School
Forever Fit	The Lodge
Yoga	The Lodge
Safe-sitter program	Burrillville Middle School
Zumba	The Lodge
Boot Camp	The Lodge
Photography 101	Burrillville Middle School
Burrillville Weekend Snack Pack	The Lodge
Sunshine Club	The Lodge
Guitar Lesson	Steere Farm, Callahan

(information and location is subject to change)

Program Expansion at the Lodge

The Department is always looking to expand programming at the Lodge. If you are an instructor interested in teaching at the Lodge or if you'd like more information about the summer programs contact the Parks & Recreation Department.

Rent the Lodge

Need a place to hold a fundraiser, birthday party, etc.? The Community Recreation Center is available for rent on weekends. For more information, contact the Parks & Recreation Department.



Forever Fit is offered each Monday and Thursday from (9:45 a.m. to 10:45 a.m.) at the Beckwith-Bruckshaw Lodge for ages 55+. Now through June 2019 the class is FREE. Taught by instructor Susan Sgambato, B.S., this beginner/intermediate class combines seated stretching, flexibility and range of motion exercises, strength training, standing dance fitness and balance exercise. This is an excellent workout for everyone: strengthening upper and lower body, improving balance, and having lots of fun. Contact Instructor Susan Sgambato at 568-5473 for registration information.

Safe Sitter Class

Monday, April 15th from 8:00 a.m. -2:30 p.m. at Burrillville Middle School Media Center for students ages 11-14. Learn safe childcare practices, good babysitting skills, and how to be a responsible adolescent. Instructors are enthusiastic and committed to teens. Most are registered nurses and all are certified to teach the Safe Sitter class. Instruction for this 1-day program includes: Babysitting as a Business, Preventing Injuries, Success on the Job, Injury Management, Child Care Essentials, Safety for the Sitter, Preventing Problem Behavior, Behavior Management, Care of a Choking Infant/Child, and Rescue Breathing. Cost: \$50, includes all materials. Advance registration is first come, first serve. For more information or to register for the class, please call (401) 431-5410 and ask the operator for Robin Zaman.

Sunshine Club

The Sunshine Club meets once per month at the Lodge to make homemade floral arrangements, crafts and cards to share at the local nursing homes to celebrate any patient's upcoming birthdays. There is no cost to participate. If you are interested in being part of spreading some sunshine to our Burrillville community members, please contact the Parks & Recreation Department.

Burrillville Weekend Snack Pack Program: a not-for-profit joint effort between Burrillville Parks and Recreation, the Burrillville Lions Club, the Jesse M. Smith Memorial Library, and the Berean Baptist Church to provide weekend food for needy Burrillville youth. Currently there are 47 children who receive the weekly backpacks. The average monthly cost for the food is \$900. Food or monetary donations can be dropped off to the Burrillville Parks and Recreation Department or the Jesse M. Smith Memorial Library. Please make checks payable to the Burrillville Weekend Snack Pack Program. Non-perishable kid friendly food (macaroni and cheese, granola bars, juice boxes etc.) is accepted. Packing sessions are held at the Beckwith Bruckshaw Lodge every 8-10 weeks. For more information on volunteering, or for a complete list of suggested donation items please contact the Parks and Recreation Department.

Summer programs to be announced!



Watch for the Parks and Recreation Summer Program Flyer in May for more information on themed week long summer camps and programs. Information and flyers will also be available at the Family Fair.

PARK NEWS:

Bike Path: Run, walk, bike, or rollerblade on the bike path! Our bike path is a 1.2 mile off-road bike path that runs along the former New York, New Haven and Hartford Railway and connects the villages of Harrisville and Pascoag. The paved path has entrances along Mowry Street and Eastern Avenue. At about the half-way point of the bike path, there is a paved path with benches and picnic tables that leads towards Duck Pond. The paved path ends at a small cul-de-sac, and a dirt path continues up over a small hill toward the pond.



Skate Park- Located on Chapel Street, open daily from 9:00 a.m. to dusk. The park is closed when the gate is closed and locked.

THIS IS AN UNSUPERVISED PARK. THE TOWN OF BURRILLVILLE WILL NOT ASSUME RESPONSIBILITY FOR INJURIES.

USE OF THIS PARK IS AT YOUR OWN RISK.

- Skateboarding, rollerblading, scooter riding and BMX bicycle riding can be a HAZARDOUS ACTIVITY that may result in SERIOUS INJURY. The use of personal safety gear and equipment (helmets, elbow pads, kneepads and protective clothing) is strongly recommended.
- The use of a protective helmet is mandatory for anyone 15 years of age or younger.
- No use allowed when equipment is wet or icy. No use allowed during lightning storms.
- Please be respectful and courteous of other users and neighbors.
- Abusive, threatening or obscene language is prohibited.
- Alcohol, Tobacco and Drugs are prohibited.
- If you see someone acting inappropriately, be a mentor and a leader and share tips on skate park etiquette.
- No competitive or demonstration events are allowed without prior approval of Parks and Recreation Department.
- Keep the park clean – No glass containers inside the fenced area. Please use the Town recycling and rubbish containers. No littering allowed!

In case of emergency - Police/Fire/Medical: Dial 9-1-1
Report vandalism, suspicious or criminal activity to:
Police Department 568-6255

Junior Hockey	www.bjhl.org
Youth Basketball	www.byba.org
Youth Soccer	www.bgysa.org
Men's Softball	http://local-softball.com/BurrillvilleRhodeIslandSoftball
Little League	www.burrillvillelittleleague.org
Figure Skating	Fb: Burrillville Figure Skating Association
Youth Football & Cheer	https://burrillvillepatriots.com
N.R.I Burrillville Softball	Fb: ASA Softball of Northern RI

LEAGUE CONTACT INFORMATION

CALLING FOR VOLUNTEERS: Are you looking to volunteer for your community? Volunteers are always needed to assist with our special events. Please contact the Parks and Recreation Department if you'd like to help.

SIGN UP FOR RECREATION NEWS:

Subscribe to receive Recreation Department News by visiting www.burrillville.org and clicking on 'E-Subscribe' tab on the left hand side of the page. Click on 'Parks and Recreation' under News and Announcements to sign up for email notifications regarding programs and events sponsored by the Parks and Recreation Department or follow us on Facebook.



Spring Lake Beach

Judy Lopez, Beach Manager
50 Old Hillside Drive, Glendale
401-568-9474

jlopez@burrillville.org

**Spring Lake Beach will open for the season on
Saturday, May 25th at 10:00 a.m.**

Admission for opening day is free and resident family passes will be available for purchase with proof of Burrillville residency. Season passes are available for Burrillville residents only: \$30.00 per family pass or \$20.00 for an individual pass. Included in the pass is a parking permit for the resident lot.

General admission for Burrillville residents is \$3.00 per person. Non-resident \$6.00 per person. Groups of 15 or more scheduled in advance are \$2.50 for residents and \$5.00 for non-residents. Free admission for up to 3 children per family ages 3 & under when accompanied by an adult. This is not applicable to groups.



Hours of Operation (Weather Permitting)

Open Memorial Day Weekend:

Saturday, May 25th to include Monday, May 27th 10:00 a.m. – 6:00 p.m.

Open for the Season:

Saturday, June 1st thru Sunday, August 25th 10:00 a.m. – 7:00 p.m.

Earlier Closing Time Begins:

Monday, August 26th thru Monday, September 2nd 10:00 a.m. – 6:00 p.m.

The facility offers an arcade; food concessions; restrooms with outdoor showers; new recreation activities; beach shop; picnic tables on a first come first serve basis. Beach amenities (available for rent) include children's kayaks, adult kayaks, children's turbo paddle boats, inflatable water slide, and paddle boards.

During hours of operation the facility has full time lifeguard staff.

Please Note

No grills or alcohol allowed on the beach.

No pets allowed on Spring Lake Beach property.

Champlin Recreation Hall

The Champlin Recreation Hall located at Spring Lake is available for rent during the season rain or shine. Patrons renting the hall are allowed to bring their own grill. No alcohol is allowed. Hall is available for rent from 11:00 a.m.- 4:00 p.m. More information available on the Town web site.



Police Department

Colonel Stephen J. Lynch, Police Chief
Wallace F. Lees Public Safety Complex
1477 Victory Highway, P.O. Box 231, Burrillville, RI 02830
Phone: 401-568-6255 Fax: 401-568-9499
burrillvillepolice@burrillville.org

WEBSITE AND FACEBOOK: If you are on Facebook, please take a moment to look us up and “like” our page. Our website: www.burrillville.org/police is the place to go for general information about programs and happenings as well as access to many downloadable forms.

BURRILLVILLE MUNICIPAL COURT

- Held 1st & 3rd Monday of each month (except holidays)
- Contact information: 401-568-9494 x 5 – lrabideau@burrillville.org
- Website – www.burrillville.org/municipal-court
- 24 hour payment box at police station lobby

E-COMMERCE SAFE ZONE In order to provide a safe area for any transactions originating from the internet, the police department provides two safe locations on the grounds of the Wallace Lees Public Safety Complex:

- South front parking lot, adjacent to the impound fence.
- Inside the front lobby of the police station.

CITIZENS POLICE ACADEMY: The next Burrillville Citizens Police Academy is expected to begin in the fall of 2019. This program has been widely successful in providing residents with insight into policing in Burrillville and throughout the area. Pick up your application at the police station or go to the downloadable forms section of the website.

CODE RED SYSTEM: Check to see if your information is correct for our reverse calling system, Code Red. This system is utilized in emergency situations as well as for occasional general information. Go to the Burrillville website at www.burrillville.org and you will find the Code Red link under the “Residents” tab on the top of the page. The instructions are easy to follow. There is also a link to Code Red under the “Sign Up” tab on our Facebook Page.

B-SAFE PROGRAM: (BURRILLVILLE SECURITY & AWARENESS FOR THE ELDERLY) The objective of this program is to make the Police Department aware of elderly, handicapped, or medically fragile individuals who live in Town and may need some extra assistance. This form can be picked up at Burrillville Police headquarters any time, 24 hours a day, or printed from the “downloadable forms” section of our website: www.burrillville.org/police.

NOTARY SERVICE is available at the Police Department 24 hours a day for no charge.

ALARM ORDINANCE Don’t forget to register your house alarm with the Police Department. You can download an alarm registration form from the website or pick one up at the police station any time.

VIN CHECKS are required for used vehicle purchases 2001 model year or newer which have an out-of-state title, or when you are transferring a vehicle registration from another state:

- 10 – 10:30am and 1 – 1:30pm – 7 days a week
- Bring vehicle, original title and \$10 cash or check

RECORD CHECKS & FINGERPRINTS If you need a national record check with fingerprints, call this department at 568-6255 for more information and to make an appointment with a detective. Note that fingerprints being done for School Department employees (including sub-contractors of the School Department such as bus drivers/monitors and cafeteria workers) cost \$30. Also, please note that NO record checks of any kind are done for juveniles.

IT IS ALMOST YARD SALE SEASON A friendly reminder that posting signs on utility poles, trees, and Town property is **prohibited** in Burrillville. For the safety of the telephone and electric company workers, our citizens, and others travelling our roads, Burrillville Police officers will be monitoring and enforcing these ordinances.

FOR QUESTIONS ON THESE OR ANY OTHER PROGRAMS AND SERVICES OFFERED BY THE BURRILLVILLE POLICE DEPARTMENT, DON'T HESITATE TO CALL 401-568-6255 OR CHECK THE WEBSITE AT WWW.BURRILLVILLE.ORG/POLICE

Burrillville Emergency Management Agency (EMA)

Glen Biddiscombe, Director

(401)- 641-0898

gbiddiscombe@burrillville.org



**Emergency preparedness is a team sport.
Despair is most often the result of ill preparedness.**

Be Prepared

Burrillville EMA asks you to please take the time to prepare or check over your home emergency kit, which needs to have adequate supplies for you and your family to be self-sufficient for 72 hours. Additionally, we remind you to please prepare a family plan. Visit <http://www.ready.gov> for a list of home emergency kit supplies and blank family plan forms.

If you have a medical condition that requires electricity, be sure to have a plan in place should you lose power. Again we ask that you be prepared to be self-sufficient for 72 hours. Burrillville EMA (BEMA) is available 24/7/365 to provide any assistance that may be needed.

Hurricane season begins on June 1st

Hurricane Warning

Hurricane warning = conditions are expected within 36 hrs.

Steps to take:

- Follow evacuation orders from local officials, if given.
- Check-in with family and friends by texting or using social media.

- Follow the hurricane timeline preparedness checklist, depending on when the storm is anticipated to hit and the impact that is projected for your location.

What to do when a hurricane is 6-18 hours from arriving

- Turn on your TV/radio, or check your city/county website every 30 minutes in order to get the latest weather updates and emergency instructions.
- Charge your cell phone now so you will have a full battery in case you lose power.

What to do when a hurricane is 6 hours from arriving

- If you're not in an area that is recommended for evacuation, plan to stay at home or where you are and let friends and family know where you are.
- Close storm shutters, and stay away from windows. Flying glass from broken windows could injure you.
- Turn your refrigerator or freezer to the coldest setting and open only when necessary. If you lose power, food will last longer. Keep a thermometer in the refrigerator to be able to check the food temperature when the power is restored.
- Turn on your TV/radio, or check your city/county website every 30 minutes in order to get the latest weather updates and emergency instructions.

Social Media

Residents are encouraged to follow us on twitter (@EMABurrillville) and also to check our Facebook page where notifications and important information will be posted when situations require.

Code Red Telephone Notification System

To ensure that your phone number is included on the call down list, or if you would like to add a cell phone number, please visit www.burrillville.org for further information. This system provides an excellent opportunity for residents to receive important information.

Rhode Island Special Needs Emergency Registry

I would like to take the opportunity to invite anyone within the Burrillville community with special needs to register on the RI Special Needs Registry at www.health.ri.gov/emregistry. This secure system allows us to keep track of those who require specialized attention during an emergency. Please sign up today or help out a family member, neighbor or friend.

Any individual, regardless of age, who has a chronic condition, disability, special healthcare need, or may require additional assistance during a time of emergency. Some examples include people who:

- Use life support systems such as oxygen, respirator, ventilator, dialysis, pacemaker, or are insulin dependent;
- Have mobility disabilities and use a wheelchair, scooter, walker, cane, or other mobility device;
- Are visually impaired, blind, hard of hearing, or deaf;
- Have speech, cognitive, developmental or mental health disabilities;

- Use assistive animals or a prosthesis.

Applications are also available by contacting BEMA at (401) 641-0898.

EMA Office & Emergency Operations Center

The Burrillville Emergency Management office is located within the Burrillville Police Headquarters Complex. When extended emergency conditions exist, the Municipal Court / Community Room is transformed to an Emergency Operation Center (EOC) where all management duties including communications, logistics, and documentation are performed. The EOC is also utilized for pre-incident planning involving representatives of all Town departments. The center was activated during the month of February during the State of Emergency declared as a result of Blizzard Juno. EMA personnel staffed the center for 41 consecutive hours working with other Town agencies providing assistance as needed to ensure the safety of all citizens.

News

The Burrillville Emergency Management Agency was awarded a grant for emergency communications upgrades. We are working with the chief of police and the Town's fire chiefs to plan and implement needed equipment to upgrade the emergency communication issues currently faced by the fire departments. The goal for implementation is June, 2019.

Interested in learning more about Emergency Management?

Burrillville has an experienced staff of volunteers who respond regularly when called upon to assist during emergency situations. If interested in becoming part of our team, please contact me at any time at 401-641-0898. Please check the EMA page on the Town web site for future messages regarding training opportunities. These trainings are for veteran members of our staff along with those new to the agency.

I thank all our volunteers, veterans and rookies alike for your tireless efforts during emergency situations and during Emergency Management activities for the Town of Burrillville, and remind everyone, "Preparedness begins at home." Visit our page on the Town of Burrillville web site!!

<https://www.burrillville.org/emergency-management>



Burrillville Addiction Assistance Program

Michelle M. Harter, Coordinator
Wallace Lees Public Safety Complex
1477 Victory Highway, Oakland, RI
401-710-9054
401-568-6255 x368
mharter@burrillville.org

The Burrillville Addiction Assistance Program, developed in 2018, is an innovative program dedicated to serving the residents of Burrillville who may suffer from, or have family members suffering from, alcohol or drug addiction. This unique program follows a similar model as many cities and Towns across the country. Addiction treatment resources are available through this program. The Town of Burrillville, in conjunction with the Burrillville Police Department, will assist those seeking to address their addiction with locating resources, planning for recovery and finding a new path in life.

Family Support Groups meet on Tuesday evenings at 6:30 p.m. and a Women's Group meets on Thursday at 11:00 a.m. at the Wallace Lees Public Safety Complex, 1477 Victory Highway in Oakland.

**For confidential information,
contact Michelle using the contact information above.**

You can also email us at: www.burrillvilleaddictionassistance.com, on our website at www.burrillville.org, or on our Facebook page: [@hangonpainends](https://www.facebook.com/hangonpainends)

Burrillville Prevention Action Coalition

Monica A. Blanchette, Coalition Coordinator
Wallace Lees Public Safety Complex
1477 Victory Highway, Oakland, RI
401-710-7996
401-568-6255 x368
mblanchette@burrillville.org

The Burrillville Prevention Action Coalition (BPAC) is a volunteer working task force comprised of individuals who are interested in substance abuse prevention issues in the Burrillville communities. Current Task Force members comprise of school, prevention and treatment professionals, youth, parents, law enforcement, fire & rescue personnel, faith community, health care, youth organizations, business owners, media, and local government. All members live and work in the Burrillville area.

Meetings take place monthly. If you are interested in volunteering or want more information, please contact Monica as listed above.

You can also follow BPAC's events and initiatives on Facebook and Instagram [@BurrillvillePAC](https://www.facebook.com/BurrillvillePAC) or on the webpage at www.burrillvilleprevention.org.

Animal Control Shelter

Ronald J. Woods, Officer
131 Clear River Drive
401-568-9480 Fax: 401-568-9471

aco@burrillville.org

Mon. 7:00 to 3:00, Tues. - Fri. 7:00 to 10:00
Saturday 7:00 to 3:00 (Closed Sundays & Holidays)

Vaccinations:


RI law requires Rabies vaccination for all dogs, cats, and ferrets. Other vaccines are important too, as there is continued canine parvo and influenza activity in RI. Parvo is a highly contagious virus which is easily transmitted and costly to treat, but can be prevented by vaccinating. Lyme and other tick related diseases are also serious health concerns. Protect yourself and your pets from ticks, and check yourself and your dogs after coming in from outdoors.


Annual Town Rabies Clinic


- Saturday, April 20, 2019 from 10:00 a.m. to 12:00 noon
- Highway Garage - Union Avenue
- \$11 per vaccination (cash only)
- Dogs must be leashed, and muzzled if necessary
- Cats and ferrets must be in carriers
- One year vaccine, proof of prior vaccine to determine eligibility for 3 year vaccine
- Ferrets receive a one year vaccine only




Reminders:

 Leash law in effect: All dogs must be leashed when off the property of the owner and under the control of a person capable of handling the dog. This law keeps your pet as well as the public and other pets safe. All dog owners/keepers/handlers are responsible for the actions of, and any injuries or damages caused, by their dog.

 Dog waste ordinance in effect: Owners/handlers are required to clean up after their dogs when off of the owners' property. Dog waste can transmit disease to animals and humans, and can contaminate our water ways. It is unsightly and smelly. Please be responsible and clean up after your pet. It is the right thing to do, and an obligation of being a pet owner.

 2019 licenses are now available and can be obtained at Town Hall with a valid Rabies certificate. All dogs must be licensed by April 30, 2019. A three dog limit is in effect for single family residences, and two dogs per unit in a duplex/apartment/condo/multi-family.

 RI Animal Cruelty laws prohibit extended tethering or kenneling of dogs. Tethering is allowed for 10 hours per 24 hour period, and kenneling is allowed for 14 hours per 24 hour period. Only veterinarians and Animal Control officials may .

authorize a waiver of these limitations. An area free of debris and accumulated feces, potable water at all times, and access to appropriate shelter are required

RI law requires cats over the age of six months be spayed/neutered. Low cost services are available.

Salmon River Veterinary

- Cats only
- Multiple mobile locations including at Burrillville Animal Shelter (monthly)
- \$75 includes spay/neuter as well as Rabies and FVRCP vaccines
- Register by calling Salmon River Vet at 401-793-0092 or online at www.rimobilevet.com.

RI Community Spay/Neuter Clinic

- Cats and Dogs
- Additional discounts for feral cats and pit bulls
- Register by calling 401-369-7297
- More information on-line at www.oceanstateanimalcoalition.org

Stray and Feral Cats:

Please do not feed stray and/or feral cats. You may feel that you are helping, but feeding these cats without taking responsibility for them only contributes to the problem of overpopulation. It is also illegal. RI law designates the feeder of cats the legal owner, and therefore that person is responsible for Rabies vaccination and spay/neuter of those cats. If you are feeding a feral cat or colony, please contact us so that we can discuss performing trap/neuter/release services (TNR). Our ability to perform this service depends on the availability of funds. TNR controls the reproduction of the colony while naturally reducing the population through attrition. You also have the option of trap/neuter/release on your own using the low cost services mentioned above.

Important tips as we all spend more time outdoors:

- All animal bites must be reported to Animal Control.
- Do not approach stray animals. Please love your own, leave others alone.
- Avoid all contact with wildlife. Rabies continues to be a serious issue in the local wildlife population. Report sick wildlife to DEM or Animal Control. All human and domestic animal contacts with wildlife should be reported.
- Do not feed pets outside, and please do not feed wildlife. Secure your trash as well.
- Place identification tags on your pets' collars so they can be returned to you if lost.
- Make sure that your pets are properly secured and have plenty of fresh water available at all times.
- Be aware of spills of auto antifreeze/coolant. It is deadly to pets.
- Please take down bird feeders by April 1st. Bird feeders attract beautiful birds that many people enjoy watching and photographing, but they also attract mice and other rodents, such as rats, chipmunks, and squirrels, and animals such as skunks and raccoons, all of which carry fleas and ticks.

Larger mammals such as fox and coyote are also attracted to prey on the smaller animals and rodents. An excess of bird in one area can cause a whole host of potential problems. Bird feces can contaminate human food and water sources, fecal dust can be inhaled into the lungs, direct contact with bird feces to a wound can result in infection. Birds can carry several hundred different viral and bacterial agents and can be quite destructive to human property, causing corrosion with the buildup up bird waste. The consequences of a high population of birds in a small area can cause a nuisance to your neighbors as well as a health hazard to your family.

- Black bears are also here and will be active in the spring/summer/fall months. Bird feeders make for an easy meal. Again, we ask that you take feeders down, and secure your trash. Clean your outdoor grill regularly. The high fat drippings can attract a bear.
- Contact our office at 568-9480 with questions, concerns, and animal-related complaints.

Important information when looking to adopt a pet:

Large numbers of private rescue groups operating in the northeast, many of them transporting dogs and cats in from southern and midwestern states. Please do your research when adopting. Increased animal importation has resulted in a significant increase in contagious canine diseases. RI has strict importing guidelines, and we recommend that you contact the RI DEM Division of Agriculture – Animal Health Division at 222-2781 to confirm that the organization you are working with is licensed with the state. These rules are in effect to protect adopters, incoming animals, and animals already living here.

At Animal Control:

Watching the construction/renovations at the Animal Shelter come along has been exciting, and we are looking forward to being back in our building and running full operations. Things have continued to be very busy here. Sadly, animals continue to be abandoned, some in need of extensive medical care. The most rewarding part of our jobs is seeing debilitated animals recover and move on to new, loving homes. We are proud to work in a community of such generous and caring supporters, and thank you all for your contributions. Product donations can be dropped off at the Shelter.

Money donations are used solely for veterinary expenses. Donations can be made in person at the Shelter, by PayPal on our website, and by mail to: Burrillville Animal Control, 105 Harrisville Main Street, Harrisville, RI 02830.

Find us at Facebook at www.facebook.com/BurrillvilleAnimalControl .



Like our page to keep updated on the goings on at the shelter. We post adoptable pets, lost & found, educational info, fundraising activities, and stories of shelter pets in need. Every like and share helps get our pets seen by more people.

***Remember, we are not only an enforcement division, we are also here to help.
Together, we can make a difference!***

For the latest information about our schools, please visit the Burrillville School Department website at www.bsd-ri.net. Below are just a few of the items you will find:

- ◇ School Calendars (including dates for report cards & progress reports)
- ◇ School Closing Information ◇ District Curriculum
- ◇ Special Events ◇ Lunch Menus
- ◇ School Committee Policies ◇ The Monthly District Update
- ◇ Information about Special Events ◇ School Committee Contact Information
- ◇ School Department Contact Information

From our Home Page you can also connect to individual school websites.

Career and Technical Education Pathways at BHS

Have you heard about the amazing Career and Technical Education Pathways available to students at Burrillville High School? A **CTE pathway** is a sequence of two or more specialized courses within a student's area of career interest. Pathways are designed to connect high school classes to college, industry certifications, and/or a career. Our pathway programs include opportunities for students to participate in industry-based projects and internships. Many result in industry-specific certifications that students can take with them when they graduate. The Burrillville School Department recognizes that there are many different ways for students to achieve an education that prepares them for life beyond high school, and we are striving to provide a learning environment that allows all of our students to reach their individual goals.

Burrillville High School proudly offers **TEN** different career and technical pathways to our students. Our Environmental Science, Project Lead the Way Engineering, and Construction Management programs are endorsed by the RI Department of Education. Several other locally approved pathways have been submitted to RIDE for their endorsement this coming spring, including our Project Lead the Way Biomedical Science program, Child Care, Computer Science, Criminal Justice, and Graphics Communications. Other locally endorsed pathways include Business and Finance, Biotechnology, and Automotive Technology. This year, we have expanded our course offerings in technology at the middle school to provide “gateway” programs that prepare our incoming freshmen for the demands of the pathway courses they may choose at the high school.

For more information about our CTE Pathways, please contact Principal Michael Whaley at 568-1310 or whaleym@bsd-ri.net. Informational videos about our CTE programs, along with applications, can be accessed at the high school website <https://bhs.bsd-ri.net/academics/cte-programs>.

Remarkable Burrillville Graduates

Our Burrillville School Department faculty, staff, administration, and school committee members are so proud of the accomplishments of our graduates, and we want to shine a light on those who make us particularly proud of the great work that we do every day! This spring, we are pleased to recognize **Seaman Bryan McConnell of the United States Coast Guard.**

Bryan McConnell graduated from Burrillville High School in June of 2017. Since completing his basic training, he has been assigned to Washington, D.C. as a member of the USCG Ceremonial Honor Guard. At just 19 years old, Bryan has already encountered many foreign dignitaries, including the Presidents of South Korea, Russia and President Trump. Most recently, Bryan was part of the honor guard at the funeral ceremonies of former President George H.W. Bush.

We look forward to recognizing many more Burrillville graduates who have made their mark on our community and our country. If you know of a Remarkable Burrillville Graduate, please contact Mrs. Julie Mayhew, Director of Curriculum, Instruction, and Assessment, at 568-1301 or mayhewj@bsd-ri.net.

Kindergarten Registration is coming soon!

Calling all parents of preschoolers! If your child will be 5 years old on or before September 1, 2019, he/she is eligible to start Kindergarten this fall at the Austin T. Levy School; Kindergarten Registration will be held on **April 8th and 10th from 4:00 p.m. to 8:00 p.m.** in the Levy School cafeteria. Please bring your child with you when you register; Kindergarten teachers will be there to do academic screenings for our incoming students! Child Outreach will also be available to see any children who have not yet been screened. Please contact principal Monica Tomson at 568-1340 for more information!

The Importance of Neighborhood Schools

A recent blog post on the site, *Generation All Chicago*, articulates the benefits to “neighborhood schools.” In a small Town like Burrillville, all our schools are neighborhood schools, and there are some real advantages to this structure.

When children attend neighborhood schools, families tend to build more and stronger relationships with other families in their community, creating a sense of cohesion and trust. As the students begin to develop life-long friendships, the parents also typically develop strong relationships, leading to stronger ties within the neighborhood. Proximity to school also allows families to connect more easily with their children’s teachers and to volunteer their time at school. The presence of adult volunteers benefits the entire school community, and research has shown that children’s success in school has a direct relationship to the level of their family’s involvement in their education. A successful community starts with top-quality public schools, and top-quality schools depend upon the community’s support.

<https://www.generationallchicago.org/4-ways-neighborhood-schools-improve-communities/>

Burrillville Extended Care
Kelly E Cournoyer, Director
P.O. Box 351, Harrisville RI 02830
Telephone 568-1356 Ext. 2
kcournoyer@burrillville.org



*"You have brains in your head. You have feet in your shoes.
You can steer yourself in any direction you choose. Oh the
places you'll go!"*
Dr. Seuss

The Burrillville Extended Care Program offers before and after school care for children in Kindergarten through 5th grade at the Steere Farm and Callahan Elementary Schools. We also provide afternoon care for children in 7th grade who have not met the age of 13. The Program also offers a full-time care summer program, school year vacations and holidays.

Burrillville Extended Care celebrates 20 years in business!

BEC originally began in 1996 under Just for Kids daycare in order to develop a before/ afterschool program to meet the growing needs of the Town of Burrillville. In August of 1997, the Burrillville School Committee decided to lend their support to a new program, that quickly flourished into what we know today as Burrillville Extended Care. The School Committee discovered that quality educational programs and child care was difficult to find for the working families of the Town. This struggle was the catalyst that drove the Burrillville Parks and Recreation Department to put all of their time, faith, heart and soul into developing Burrillville Extended Care.

After countless hours of hard work, advertising, registering and a lot of convincing, the School Department, along with the Town's Recreation Department, opened the first BEC Center at the Steere Farm Elementary School. In September of 1999, the Program had grown so much that a second site was added at the W.L. Callahan School. Then in January of 2006, it became official! BEC was made into its own Department under the Town of Burrillville.

Here we are today, and still going strong! BEC serves over 230 families in our community. These children participate in our Before/ After School Program as well as our 12-week long Summer program. B.E.C. would like to thank the Burrillville School Department and the Town of Burrillville for their continued support!

Summer Camp 2019

Registrations for our Summer Camp Program begin on April 1, 2019. Our Summer Program is available for the entire summer, ***estimated start date is June 14th and run until the last day, Friday, August 30th.*** The program will operate Monday-Friday 6:30 a.m. to 6:00 p.m. The center, however, will be closed ***Thursday, July 4th***. Mondays and Fridays will be onsite. Wednesdays will be field trip days, and every Tuesday and Thursday will be spent at the Spring Lake Beach facility. Upon registration, you will receive a completed summer schedule with specific trips, special entertainers and events.

The BEC Summer Program accepts children entering grades First thru Seventh and haven't reached the max age of 13. This age requirement is due to our licensing through RI DCYF. Due to DCYF regulations, children who will be entering Kindergarten in the fall of 2019 will not be allowed to attend the summer program.

Information and Registration Forms are available on the Town website:

<http://www.burrillville.org/burrillville-extended-care-program>

or by calling the main office at 568-1356 Ext. 1 to register.

Jesse M. Smith Memorial Library

Beth Ullucci, Director

100 Tinkham Lane, Harrisville, RI 02830

(401) 710-7800 Fax: (401) 710-7772

www.jmslibrary.org or visit us on Facebook and Instagram

Hours: Monday-Thursday 10:00 a.m.- 8:00 p.m.

Friday & Saturday 10:00 a.m.- 5:00 p.m.

Summer Saturdays 10:00 a.m.-2:00 p.m.



The library is more than just books and computers. It is the cornerstone of the community, offering all a place to gather, explore, interact, and imagine! We offer a wide variety of programming and materials for patrons of all ages. You can find story times, adult crafts and programs, special teen events, books,

DVDs, computers, wireless printing, e-Books, and a whole lot more every time you visit. Come check out all we have to offer at our beautiful building by the river!

The Children's Department continues to offer a variety of fun and educational programs for children all ages.

- Story times for kids birth to preschool including Playlab, Babies & Books and Rhythm & Rhyme
- Ongoing Programs - Lego Club, Literacy Tails (read to a therapy dog), Block Party, Craft Corner and more!
- Special events – Dr. Seuss Birthday Party, animal visits, magicians, Dinosaur Day, Summer Reading Program programs and prizes, Project Chick, themed story times and many more!

Teens flock to the library in search of fun and a safe place to hang out.

Our **Teen Hangout** in the Community Room provides teens (ages 11-17) with food, games, crafts and a place to relax after school. Open Monday to Thursday from 2:00 p.m. - 6:00 p.m. and Friday from 2:00 p.m. - 4:30 p.m. (Hours may change during the summer).

We offer:

- Video games on the Nintendo Switch and Wii
- Computers are available for homework and fun – play Fortnite, Roblox or Minecraft
- Special events – after hours LaserTag, Candy Bingo, video game tournaments, food fun and more!
- Ongoing programs include the Teen Advisory Council, drop-in crafts, Tech Club and more!
- In June, get ready for exams with quiet Teen Study spaces, extended Teen Hangouts and an Exam Cram Night
- Special events all summer long as part of Summer Reading – read, attend fun programs and win prizes!

Adults have many reasons to visit the library too! Not only can we help you discover great books, DVDs and other materials, but so much more!

- Programs – crafts, informational speakers, special events (ex. Escape Rooms, Haunted Library) and more! Ongoing programs include Knitter's Group, Writing Group and Mineral Hunters Group.
- Technology assistance – computer classes, 1-on-1 help sessions, and drop-in internet support.
- Databases – Ancestry Library Edition, Providence Journal and AskRI.org (learn a language, fix a car, health information, college & career test preparation, etc.).

Visit us during the **Burrillville Family Fair** on June 15 at the pavilion, when start sign-ups for all of our summer reading programs. This year's theme is *Universe of Stories*. We have tons of exciting programs and reading incentives & prizes for everyone – kids, teens and adults!

Did you know we offer...

- Discounted Museum Passes - Mystic Aquarium, Mystic Seaport, Roger Williams Park Zoo, Providence Children's Museum and Sturbridge Village
- Downloadable eBooks & audiobooks and streaming video through the Ocean State Libraries eZone
- Circulating special items, including movies and TV Series on DVD, appliance voltage meters, fishing poles/tackle boxes, sit/stand rolling walkers and puzzles
- Wireless printing from home or your mobile device from within the library
- Fax services and document scanning to email

Friends of the Library

It is thanks to the Friends of The Jesse M. Smith Memorial Library that we are able to hold all of our amazing programs including our summer reading programs, Halloween events, the Riverwalk Times Concert Series and many more! The Friends raise funds through book sales, vendor fairs, silent auctions and donations. They are always looking for new members. The Friends meet in the library on the first Wednesday of each month at 6:30 p.m.

Riverwalk Times Concerts Series

The Friends of the Library bring some amazing music to the library every summer on Saturdays from 6:00 to 8:00 pm outside, in front of the library at the Pavilion. Bring blankets and chairs and come on down to enjoy the music! These concerts are sponsored by the Friends of the Jesse M. Smith Memorial Library along with support from local business and organizations.

Our 2019 Summer Concert Schedule: (tentative and subject to change)

JULY 6: Whiskey Rhode

JULY 13: Kelly Lennon Band

JULY 20: Jesse Liam Band

JULY 27: The Aviators

AUGUST 3: Easy Street Bayou

AUGUST 10: The Live Music Band

AUGUST 17: Brass Attack

AUGUST 24: The DeLoreans

AUGUST 31: Navy Band Northeast: Rhode Island Sound (tentative)

Statistical Information

- Visits: in FY 2018, we had 5596 registered patrons and 77,528 **visits to the library**
- Circulation: in FY 2018, we circulated 71,401 **items** including books, DVDs, audiobooks, E-Books, magazines and puzzles
- Programming: in FY 2018, we had a total of 916 **programs** with an attendance of 22,365

Be on the Lookout for some spectacular events this spring and summer!!

- RI Library Day (April 13, 2019) - giveaways and a magic show with The Great Baldini
- Library wide Jesse Con, celebrating superheroes, Star Wars, Pokémon and more!
- Special Summer Kick Off event in June for kids!

Find out what is happening at the Library!!

- Facebook and Instagram
- Monthly Newsletter
- <http://jmslibrary.org>



Burrillville Wastewater Facility/Sewer Commission

Michael Emond, Superintendent

141 Clear River Drive, Oakland

Phone: 401-568-6296 Fax: 401-568-9464

bwtf@burrillville.org

Hours: Mon. - Thurs. 8:30 a.m. to 4:00 p.m., Fri. 7:30 a.m. to 3:00 p.m.

The Board of Sewer Commission is comprised of five (5) members. The members are currently William Andrews, Chairman, Richard Nolan, Vice Chairman, Russell Fontaine, Secretary, Gary Rouleau and Dan Joubert. The Commission holds meetings on the second Tuesday of each month at 6:30 p.m. in the Board Room of the Wastewater Treatment Facility. If you would like an item placed on the agenda, it must be received at this office by the first Tuesday of the month no later than 2:00 p.m.

Sewer Use Charges

The sewer use rate for FY19 is \$504.00 a year for a single family dwelling. At the present time, residential sewer use charges are mailed once a year in October and can be made in quarterly payments of \$126 per unit. Please note that failure to receive a bill does not negate the requirement to pay the bills when they are due.

Sewer Assessment Charges

Sewer assessment bills are mailed out once a year in the month of July. Homeowners can choose to pay the sewer assessment in a lump sum or over a 20 year period. If you choose the 20 year payment plan, you can at any time make additional payments to the assessment or pay in full.

Please note:

- **Should you sell or transfer your property, the sewer assessment is not transferrable to the new owner.**
- **Any assessment balance must be paid in full at time of sale.**
- **If you are having financial difficulties, please contact this office as soon as possible so that we can set up.**

Payment

Bills can be paid in person at the Wastewater Treatment Facility or by mailing to: P.O. Box 71, Harrisville, RI 02830. Please note that there is a drop box located to the left of the rear entrance to the Town Hall from the parking lot for your convenience during non-working hours. **Please note on the front of the envelope that it is a sewer payment and checks only - No Cash.**

This office does accept postmarks for payments. However, payments with NO postmark (such as payments left in the drop box at Town Hall, will be processed on the actual day they are received by this office.

Please note that we now have in service the credit card option to pay your bills. Customers may now view and pay their balances online or at the office using their MasterCard or Visa Cards. Please check the bottom of your bill for the site and your Pin # to access your account. The credit card company does charge a 3% fee for this service.



The Burrillville Lions Club

P.O. Box 414

Harrisville, RI 02830

"Where there's a need, there's a Lion"

The Burrillville Lions Club is a volunteer non-profit organization serving the residents of Burrillville and North Smithfield. Chartered in 1947, the Club meets the first and third Wednesday of each month, except July and August, at Uncle Ronnie's Red Tavern in Nasonville. Fund raisers are held to provide for charitable and community betterment activities. These include a since founded, 70+ year tradition of conducting a learn-to-swim program at the Town beach; providing scholarships for Burrillville resident high school seniors; supporting the Town's food banks; providing dictionaries to all third grade students; hosting camps for blind and handicapped children at the Town beach; supporting the RI Sight Foundation and Children with Cancer Fund; assisting families at the state's Ronald McDonald House; and many other endeavors. One hundred percent (100%) of all net proceeds is returned to the community.

Services provided include: conducting eye screening for elementary school children; providing food and support for the Backpack Program; conducting Earth Day Cleanups; assisting residents with eye care issues and providing emergency assistance as appropriate.

The Burrillville Lions Club is part of Lions Clubs International, the largest service organization in the world. Membership is encouraged and volunteers are always needed and welcomed. If interested, please contact us at the above address.

Burrillville Historical and Preservation Society

16 Laurel Hill Avenue, Pascoag, RI 02859

568-8534

bmencucci@verizon.net

The Burrillville Historical & Preservation Society's mission is to preserve and protect Burrillville's history. The Society meets on the 4th Tuesday of each month at 7:00 p.m. at its headquarters, the Bridgeton School in Pascoag. This 1897 schoolhouse serves as a repository for a collection of photos, documents, histories, scrapbooks, cemetery information, clothing and artifacts. The schoolhouse is open during monthly meetings, special events and by appointment. If you have old photos you'd like to share, we can scan them and return your originals.

If you go to Spring Lake Beach this summer, please visit the new museum in the "Herring Pond Hotel" building. There are old maps and photos depicting the history of the beach as well as artifacts from the original hotel building that once stood there.

We are always looking for volunteers to help us with cemetery cleanings. The work involves cutting brush, weed-whacking and raking leaves. We especially need vol-

unteers that can weed-whack. Even if you can volunteer one hour of your time in a year, the help would be greatly appreciated. This is a great opportunity for high school students to get their community service hours for graduation. Contact us if you'd like information on our adopt-a-cemetery program. Please join us on April 13th as we will be celebrating Cemetery Awareness/Preservation Day and will be looking for volunteers to help clean a local cemetery.

Gravestone conservation work will continue this spring. There are 130 cemeteries in Burrillville. We have completed conservation work in 26 of those cemeteries. If you have a historical cemetery on your property with broken or leaning stones, please contact us if you'd like to have the stones repaired and reset.

Berard-Desjarlais American Legion Post 88

111 Chapel Street Harrisville, RI 02830

www.legionpost88ri.org



The American Legion was chartered and incorporated by Congress in 1919 as a patriotic veterans organization devoted to mutual helpfulness. It is the nation's largest veteran's service organization, committed to mentoring youth and sponsorship of wholesome programs in our communities, advocating patriotism and

honor, promoting strong national security, and continued devotion to our fellow service members and veteran's needs.

The Post supports many community programs and provides a meeting place for Burrillville organizations. Linda Peck, Town and Post Service Officer, is the Veterans Representative. Office hours are held on the third Wednesday of each month at 5:30 p.m. at Post 88. For any emergencies, please contact Linda Peck at 401-568-8491 or by email: ldp24@cox.net.



Ray Trinke has taken over the duties of Building Coordinator. He will maintain the schedule at the Binns Building and can be reached at 401-568-0858 or by e-mail at raytrank101@cox.net. Please contact Ray also for any Town organizations or party rental or if you would like to become a member of the post.

above link

or buy from Lawrence Brothers Hardware across from Post 88 in Harrisville.



We collect used clothing for the needy in the donation shed located outside our post home.

Pascoag Public Library

57 Church Street

Pascoag, RI 02859

Tel: 401-568-6226 Fax: 401-567-9372

<http://pascoaglibrary.org>

<http://facebook.com/PascoagLibrary>

Pascoag Public Library aims to provide the same services as larger libraries while retaining its small-Town ambience. We have 16,500 volumes for all ages including everything from classics to the latest bestsellers in both fiction and non-fiction. Patrons can also borrow materials from all the public libraries in the state through the Ocean State Libraries (OSL) network.

HOURS

Monday: 10:00 p.m. - 8:00 p.m.

Tuesday: Closed

Wed.: Closed

Thurs.: 10:00 a.m. - 8:00 p.m.

Friday: 10:00 p.m. - 3:00 p.m.

Saturday: 9:00 a.m. - 1:00 p.m.

Sunday: Closed

LIBRARY NEWS

In Fall of 2018, the library was awarded 2 grants: Champlin Foundation granted us \$4,850 to pay for a custom mahogany front door to replace the original 1924 version which is well past its prime; June Rockwell Levy Foundation granted us \$4,500 for a new oil tank and a new outdoor sign. During the summer, we had also received a legislative grant of \$500 from the R.I. House of Representatives which also helped to pay for the signage. In November, we had a flood in the basement. Two new sump pumps, new electrical wiring and switches, and a thorough cleaning/drying out were purchased. Some costs were not covered by our insurance unfortunately. 2019 will be another year of grant applications.

PROGRAMS AND EVENTS

In the Fall, we had fairly successful Storytimes & Crafternoons. On Saturdays the Children's Librarian started a Minecraft program which also included other gaming. The monthly Genealogy program, our Ghost hunting program, the Victorian Tea, and the Family Christmas program were all well attended in spite of some limited access to the lower level.

New in January 2019

- **Essentrics:** Monday afternoons at 1:30 & on the 3rd Thursday of the month at 6:30 p.m..
- **Genealogy:** the last Monday of the month at 6:00 p.m.
- **Storytime & Crafternoons:** resume on Thursday January 17 – see Facebook for details.

We are always taking suggestions for new programs! If there is something that you would like to learn or something you want to teach, please contact us. paslib.director@gmail.com or call 401-568-6226.

SERVICES

Six desktop computers are available for public use with b/w & color laser printing capability.

Black and white printing/copying: 10¢ per page

Color printing/copying: 50¢ per page

Scanner is Available.



FAXES

- Free cover page
- 1 Unit = 10 pages. \$1.00/page for pages 1-5; free for pages 6-10
- No international faxes

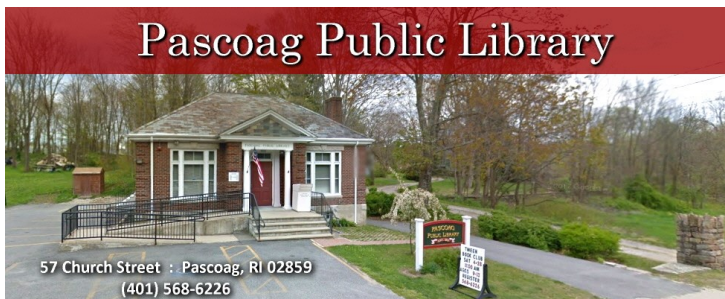
HISTORY

The Pascoag Public Library is an integral part of the history of the Town of Burrillville. It was the first library in the Town, founded in 1871 by a women's group called the Pascoag Union Sewing Society. In 1873, they renamed themselves the Ladies Pascoag Library Association, appointed a librarian, and purchased 163 books, which were housed in the librarian's local store.

The Library moved four times between 1883 and 1899 when Samuel Mellor offered the use of a room rent free over his mill office on Sayles Avenue where it remained until 1913 when it moved to the Steere Building on Main Street. At this time, charges associated with the loan of books were discontinued and the library became known as the Pascoag Free Public Library.

A bequest of \$500 from Miss Rosamond A. Steere stipulated that the money be used for a free public library building within ten years. This started the building fund, which grew through numerous fundraisers and donations. The library's current home at 57 Church Street was erected in 1924. By 2010, it was clear that the library needed room to grow. With grants from the Champlin Foundation and the Levy Foundation, the library added a 36x22 foot addition, nearly doubling its size. Construction was completed in June 2011, at the 140th anniversary of the library's founding.

The Library is privately owned by the Ladies Pascoag Library Association and governed by the Board of Trustees, which is still composed of all women.





Boy Scouts of America-Scouts BSA

Cub Scouts is a program for boys and girls from kindergarten through fifth grade. Scouts BSA teaches practical skills while having fun, focusing on character development and enhancing their community spirit. Cub Scouts are made up of Dens. (groups for each grade). They meet once a week during the school year and then get together for a Pack meeting once a month to show what they've learned and receive their awards. There are two Cub Scout packs in Burrillville, contact information below:

- **Pack 1 Pascoag:** Florence Stevens at 401-568-0395, or newtfla@cox.net.
- **Pack 102 Mapleville:** Chris Samek at 401-568-2220 or cfsamek@cox.net.

Boy Scouts/Scouts BSA begins in fifth grade continuing until 18 years old. Girls can also join this program, now called Scouts BSA, but are separate from the boys. Every day they are encouraged to live by the 13 points of the Scout Law by being trustworthy, loyal, etc. They are taught skills of the world around them by earning merit badges. Scouts are grouped by rank, not by grade, with the highest rank being Eagle Scout. The Troops are separated into groups of similar ranks and skills, called Patrols. All the Scouts meet once a week and have a "Court of Honor" three times a year where they are recognized and are presented awards. There are two Troops in Burrillville, contact information below:

- **Troop 1 Pascoag:** Newton Stevens at 401-568-0395 or newtfla@cox.net.
- **Pack 102 Mapleville:** Jeff Goulet at jeffgoulet52@gmail.com

The Burrillville Conservation Commission

The Burrillville Conservation Commission's mission is to protect and preserve the natural tranquility of the local natural reserves, features and attributes that defines the Town of Burrillville's natural characteristics which draws people to this community to enjoy the rural atmosphere, scenic vistas, recreational opportunities and many qualities of life. The Conservation Commission is responsible for the establishment of a seven-member party that serves as an appointed board reporting directly to the Town Council, Planning Board, Zoning Board and the many municipal employees that constitute the Town's government.

Some of the wonderful areas the Conservation Commission manages are as follows:

1. Joseph O. Brock Blanchard – Nipmuc Trail, located off of Round Top Road, ¼ mile north of Smith Road. Trail is for public walking, hiking & fishing on 200⁺ acres of land along the Nipmuc River.
2. Wallum Lake Canoe Launch, located off South Shore Road on scenic Wallum Lake. Site is strictly for canoeing, kayaking and fishing. Swimming is prohibited.
3. Clear River Canoe Launch, located off Clear River Drive just behind the Burrillville Animal Control Facility. Access allows scenic exploration of the Clear River from the site to points south along Clear River towards Mill Pond in Oakland.

The Conservation Commission also provides natural resources to our residents on Earth Day, at the Annual Family Fair and other Town sponsored programs throughout the year. View the local listings for upcoming events.

The Burrillville Farmers Market
Stillwater Mill Center

75 Tinkham Lane
Harrisville, RI 02830
Deb 401-568-3191 or Al 401-556-7605

burrillvillefma@gmail.com

Mailing address: P.O. Box 215, Pascoag, RI 02859
Saturdays, 9:30 a.m. to 12:30 p.m., June 1st through September 28th

The Burrillville Farmers Market Association is a nonprofit organization, whose mission is to promote & market the products of local farms & artisans in our beautiful, rural community & surrounding areas. We hope you'll support us, as we strive to bring a diverse shopping experience, while reducing our carbon footprint and encourage a more sustainable and stronger local food system.

We are sad to say, we are discontinuing our Thursday afternoon market. We thank those who attended on Thursdays. We really loved that little Market and our loyal customers, but for many reasons, it was just not sustainable. Feel free to contact us with any questions or concerns.

We are very happy to continue our Double Bonus Buck Program. Thanks to a USDA grant and Farm Fresh R.I., our locally grown, nutritious food is accessible to all! 100% Bonus Bucks to shoppers using federal SNAP (Supplemental Nutrition Assistance Program). For every dollar you spend with EBT, you get a FREE dollar in Bonus Bucks to spend on fresh fruits and vegetables at the Farmers Market.

Please help us reduce pollution caused by plastic bags by using reusable bags. We have Burrillville Farmers Market totes made from recycled plastic available.

The market accepts: Cash, Credit/Debit, SNAP/EBT, WIC Fruit & Vegetable checks, Senior Farmers Market Nutritional checks. Stop by the Welcome Table for assistance and coffee!

- * Thanks to The Town of Burrillville for their continuing support and our new signs.



- * Thanks to Burrillville DPW for providing us with mulch for our gardens & unending repairs to the pavilion.
- * Thanks to Gail and Al Bettencourt for keeping our gardens beautiful, enjoy them!
- * And to all our Vendors, Volunteers and Customers who keep us growing!

If you love Farmers Markets and want to help out, play some music or be a vendor, contact us, we'd love to hear from you!

Let's make this, our 13th season, a great one!

Follow us on Facebook for all the latest updates!



Information & Services for Seniors

Lisa Jessup, CIS
84 Social Street, Woonsocket, RI 02895
Phone: 766-3734 Fax: 766-5578

The Community Information Specialist at Senior Services, Inc. in Woonsocket, RI, is available to assist and advise senior residents of Burrillville. Please call Senior Services, Inc. at 401-766-3734 to make an appointment. The Specialist can provide information and assistance with applying for programs you may be eligible for.



The Specialist is also trained as a Senior Health Insurance Program (SHIP) Counselor and can explain health insurance options available to Rhode Island seniors so that they may make informed choices concerning their health care.

Understanding Medicare enrollment periods can help you prevent gaps in coverage and avoid financial penalties.

- **Know when to sign up for Medicare Part A and Part B.**
- **Know when you can routinely make changes to your Medicare coverage.**
- **Know whether you are eligible for a Special Enrollment or Special Election Period.**

Take Action:

- 1) Familiarize yourself with each Medicare enrollment period to avoid gaps in coverage and financial penalties.
- 2) If you need help making coverage changes or understanding your options, contact your SHIP.
- 3) If you receive suspicious offers or charges, contact your Senior Medicare Patrol (SMP) to discuss potential abuse or fraud.

Services Available If Eligible

Assisted Living Facilities, Caregiver Abuse, Financial Assistance, Fraud/Waste and Abuse, Health Insurance, Heating Assistance, Home and Community Care Co-Pay, Identification (DEA/RIPTA), Home Equity Conversion, In Home Services, SNAP (Food Stamps), Legal Assistance (Living Wills, Health Care Power of Attorney, Medicare, Medical Assistance (Medicaid) Long-term Care, Property Tax Relief, (1040H) Respite Care, RI Pharmaceutical Assistance, Transportation.

Referrals to other agencies

To reach the Town's webpage devoted to news and information for seniors, go to the Town website <https://www.burrillville.org/senior-services>

and click on the "Senior Services" button on the left. In addition to *Senior News*, the page contains useful links and information on services and programs available to residents. The site covers topics such as Social Security, RIPAE, State identification cards, RIPTA, senior dining – and more!

Community Assistance Information



Burrillville Resources

<http://www.burrillville.org/home/pages/community-resources>

Berean Baptist Church

474 Chapel Street
Harrisville, RI 02830
401-568-5411

Coats of Colors Closet

1st & 3rd Saturday of month
8:30 am to 10:30 am

Free clothing, shoes, jackets, etc. for men,
women and children.

**Open to all residents of Burrillville,
Glocester, No. Smithfield, and Foster**

Burrillville Housing Authority

77 Ashton Court
Harrisville, RI 02830
401-568-6200

**Rental Housing / Section 8
For Seniors & Handicapped**

Our Lady of Good Help Church

1063 Victory Highway
Mapleville, RI 02839
401-762-1834

2019 SVDP Food Pantry

10:00 am to 11:00 am : Elderly & Disabled
6:00 pm to 7:00 pm: All others

February 5, March 5, April 2, May 14,
June 4, July 9, August 6, September 3,
October 1, November 5, December 3

Bring your reusable or plastic bags

***If Burrillville schools are closed on a sched-
uled opening, will reschedule to open the
Saturday of that week.
10:00 am to 11:00 am**

Between the Cracks

401-568-8303

Michele at Dev's Café

Call for help with fuel, rent, groceries and
other needs in emergency situations.

St. Patrick's Church

401-568-5600

Call between 8:00 am to 12:00 pm
Monday to Friday

Food Pantry

Every other Monday 5:30 pm to 7:00 pm
(Tuesday if Mon. Holiday)

**Clothing and Household Items
also available.**

*** Call for Emergency Appointment ***

Burrillville Seventh Day Adventist

854 Victory Highway
Mapleville, RI 02839
401-678-0035 (Claire)

Food Pantry & Food Closet

Last Tuesday of each month
5:30 pm to 7:00 pm

Burrillville Lion's Club

P.O. Box 414
Harrisville, RI 02830
401-568-4300 x145

Call for the appropriate contact for
financial assistance to purchase eye
glasses and screening .

More Information & Services

RI Dept. of Human Services

401-222-5960

*Supplemental Nutrition
Assistance Program (SNAP)

**Based on income, resources, and
the number in household**

Neighborworks Blackstone River Valley

719 Front Street, Suite 103

Woonsocket, RI 02895

401-235-7000

neighborworksbrv.org

**Works with residents, businesses,
neighborhood institutions, partners
and communities to enrich
neighborhood life and make affordable
housing opportunities available .**

Community Care Alliance

800 Clinton Street

Woonsocket, RI

401-235-7000

communitycareri.org

**We support people in their efforts to
stabilize and build better lives as-
sisting with life's many challenges
such as education, mental health,
addiction, housing, employment,
etc.**

Meals on Wheels

351-6700

www.rimeals.org

This program provides up to five noontime
meals per week to the elderly or disabled.
(\$3.00 donations accepted)

Crossroads Rhode Island

401-521-2255

401-461-1755

<https://www.crossroadsri.org/>

Help for the Homeless

Chepachet Union Church

1138 Putnam Pike

Chepachet, RI

401-568-2518

**Gently used clothing
at a very small price.**

Food Pantry

1st & 3rd Saturday

10:00 a.m. to 12:00 p.m.

Stillwater Heights

30 Central Street

Harrisville, RI 02830

401-710-7344

<http://www.stillwaterheightsaps.com>

**Low Income Housing
for Seniors 62 or better**

RI Division of Elderly Affairs

401-462-3000

<http://www.dea.ri.gov>

Call to ask for a pocket manual of
services or visit the website to view.

Burrillville Addiction Assistance

Wallace Lees Public Safety Complex

Victory Highway, Burrillville, RI

401-710-9054

mharter@burrillville.org

Addiction Referrals & Recovery Support



**Tri-Town
Community Action Agency**
Helping people. Changing lives.

Main Office:

1126 Hartford Avenue, Johnston, RI 02919

Phone: 401-351-2750

www.tricountyri.org

Other offices:

11 Emanuel Street, No. Providence, RI 02911

185 Main Street, Pascoag, RI 02859

Children, Youth & Families

*Head Start & Early Head Start

*Seasonal Distribution
of Food Baskets and Toys

Seniors & Disabled Adults

**Assist families in providing care
to their loved ones.**

- * Adult Daycare
- * National Family Caregivers
- * ...and more

Food & Nutrition

*WIC Nutrition Program

**For low-income women, infants, and
children up to age 5 at
nutritional risk.**

Sites in Johnston and Burrillville

- *Food Stamp Assistance (SNAP)
- *Commodities Distribution
(Food Bank)
- *Emergency Food Vouchers

Health Center

**Affordable health services available
on a sliding fee discount to families
who meet eligibility requirements.**

Employment Education & Training

401-519-1909

- * Adult Basic Education Program
- * Financial Literacy Program
- * Adult Job Training

GED exam preparation, adult basic education, post secondary educational assistance, and alternative diploma programs.

- * Youth Opportunity Center (ages 14 to 24)
- * Summer Youth Employment & Training Program

Housing, Energy & Emergency

- * Appliance Management Program
- * Emergency Basic Human Needs
- * Emergency Boiler Repair
- * Emergency Shelter Vouchers
- * Fuel Assistance (LIHEAP)
- * Good Neighbor Energy Fund
- * Weatherization Assistance Program

Affordable Housing in Burrillville

HUD Subsidized Senior Housing Assistance

Ashton Court

Burrillville Housing Authority
William Valentine, Executive Director
77 Ashton Court
Harrisville, RI 02830

Tel: 568-6200 Fax: 568-4735

***Our mission is to provide decent,
safe and sanitary housing
for elderly/handicapped-disabled:
Public Housing and Section 8
existing housing program.***

Bradford Court

Ken DeCaporale, Property Manager
45 North Main Street
Pascoag, RI 02859

Tel: 568-5403 Fax: 568-1717

***We accommodate residents 62 and
older, as well as handicapped
and disabled with a preference
to the elderly.***

Stillwater Heights Housing

Theresa Stelmach, Property Manager
30 Central Street
Harrisville, RI 02830

Tel: 710-7344 Fax: 710-7346

***We provide independent living
accommodations for residents 62
and older who meet
HUD income guidelines.***

Affordable Mixed Family Housing

Greenridge Commons

Maloney Properties, Property Manager
124 Garvy Ledges Lane
Pascoag, RI 02859
Tel: 762-5220

**Greenridge Commons is a mixed-
income community. To rent an
affordable unit you must meet
certain income requirements.**

The Clocktower Apartments

Maloney Properties, Property Manager
200 Tinkham Lane
Harrisville, RI 02830
Tel: 762-3600

**The Clocktower is a mixed-income
community offering apartments
at three income levels. To rent an
affordable unit you must meet
certain income requirements.**

The Assembly Theatre
"The Center for the Arts in Burrillville"
26 East Avenue, Harrisville, RI 02830
boa.org



The Assembly Theatre was built in 1934 by mill owner and philanthropist Austin T. Levy and June Rockwell Levy, donated the Assembly to the Town of Burrillville in order for the residents to enjoy performing artists and theater. The Board of Administration was created by Mr. Levy in 1934 to oversee the Assembly Theatre and the Board continues to manage and maintain this beautiful historic theater to this day.

Upcoming Events

"Norman is That You?" (The Theatre Company of RI) *"A funny play about values, love and human behavior."*

- ◆ April 5 & 6, 8:00 p.m., Sunday April 7th, 2:00 p.m.
- ◆ April 12 & 13, 8:00 p.m., Sunday April 14th, 2:00, p.m.

"Adventures in Story Book Land" (G. Cole Productions), *Family Friendly*

- ◆ April 26, 7:00 p.m., Saturday April 27th, 2:00 p.m.

"The Magic of Lon Cerel", *Family Friendly, Voted best RI Family Entertainer, 3yrs.*

- ◆ April 28, 12:30 p.m.

"Robert Black & The Elvis Express Band", *"Rated the #1 Elvis Tribute Band in the Northeast!" - Vegas Style Entertainer*

- ◆ May 4, 7:30 p.m.

"Eric Gardini Bending Gravity", *"Renowned Juggler". Family Friendly*

- ◆ May 5, 2:00 p.m.

"Lon Cerel's Out of Your Mind!", *"An Evening of Comedy and Mind Reading"*

- ◆ May 10, 7:30 p.m.

"Charismatic Comedy Magic!", **Matt Roberts**, *Discover Emmy-Nominated Entertainer for Clean Comedy & Astonishing Illusions (Family Friendly)*

- ◆ May 11, 2:00 p.m.

"The Wizard of Oz", G. Cole Productions (youth theatre)

- ◆ May 17, 7 p.m., Saturday May 18, 2:00 and 7:00 p.m.

Kevin Driscoll National Award Winning Kid's "Ventriloquist" (Family Friendly!)

- ◆ May 19, 2:00 p.m.

Tickets at door, Smarttix.com, or 401-710-9015 for reservations

The Assembly of Food Trucks: Eat from some of the best food trucks in RI, maybe even eat at multiple trucks. Food trucks accept cash, credit or debit. Admission is free (donations to the Assembly Theatre will be gladly accepted).

May 19, June 16, July 21, Aug.18, 3:00 to 7:00 p.m. on the Assembly Grounds

Town of Burrillville Post Offices



Harrisville Post Office

131 Harrisville Main Street, Harrisville, RI 02830

Wendy Demarais, Postmaster

Mon. - Fri. Retail Hours: 8:30 a.m. -1:30 p.m. & 2:30 p.m. 4:45 p.m.

Lobby Open: 7:00 a.m. - 5:30 p.m.

Sat. Retail: 9:00 a.m. - 12:00 p.m., Lobby Open: 7:00 a.m. - 12:00 p.m.

401-568-9075

Glendale Post Office

1916 Victory Highway, Glendale, RI 02826

Wendy Demarais, Postmaster

Marlene Dupre, Clerk

Mon.-Fri. Retail Hours: 10:00 a.m. -1:00 p.m. & 2:00 p.m.- 4:45 p.m.

Lobby Open: 6:00 a.m. - 6:00 p.m.

Sat. Retail: 8:30 a.m. -11:30 a.m., Lobby Open: 6:00 a.m. - 3:00 p.m.

401-568-8782

Pascoag Post Office

35 Bridgeway, Pascoag, RI 02858

Christopher Jackson, Postmaster

Mon.- Fri. Retail Hours: 8:15 a.m. -12:30 p.m. & 1:30 p.m. - 4:45 p.m.

Lobby Hours: 7:00 a.m. - 5:00 p.m.

Sat. Retail: 8:30 a.m. -11:30 a.m.

Lobby Open: 7:00 a.m. -12:00 p.m.

401-568-8790

Mapleville Post Office

963 Victory Highway, Mapleville, RI 02839

Wendy Demarais, Postmaster

Mon.-Fri. Retail Hours: 8:30 a.m. - 12:30 p.m.

Lobby Open: 7:00 a.m. - 5:00 p.m.

Sat. Retail: 9:00 a.m. -11:30 a.m.

Lobby Open: 8:30 a.m. - 12:00 p.m.

401-568-7312



Your Local Fire Departments

Harrisville Fire Department

Michael E. Gingell, Chief
201 Callahan School Street, Harrisville, RI 02830
Business Telephone: 401-568-5110



Oakland-Mapleville Fire Department

Joseph E. Bertholic, Chief
46 Oakland School Street, Oakland, RI 02858
Business Telephone: 401-568-5720

Pascoag Fire Department

Harold (Butch) Carter, Chief
Hose #1 105 Pascoag Main Street Pascoag, RI 02859
Business Telephone 568-4470
Hose #2 141 Howard Avenue, Pascoag, RI 02859
Business Telephone: 401-568-4920

Wallum Lake Fire Department

Robert Bishop, Chief
P.O. Box 354, Pascoag, RI 02859
Business Telephone: 401-568-9019

Note: Business telephones are not manned at all times.
Dispatch at the police department can be used for emergencies 401-568-6255

For emergencies dial 911



Give Back to Your Community

With a sense of pride!

Inquire about volunteering!



State Government Officials

<p><u>Governor</u> Gina Raimondo www.governor.ri.gov 401-222-8096</p>	<p><u>Secretary of State</u> Nellie Gorbea www.sos.ri.gov 401-222-2357</p>
<p><u>Lt. Governor</u> Daniel McKee www.ltgov.ri.gov</p>	<p><u>Attorney General</u> Peter Neronha www.riag.ri.gov 401-274-4400</p>
<p><u>General Treasurer</u> Seth Magaziner www.treasury.ri.gov</p>	
 <p>BURRILLVILLE RHODE ISLAND</p>	
<p>District 23, Jessica de La Cruz sen-delacruz@rilegislature.gov</p>	
<p>District 47, David J. Place rep-place@rilegislature.gov</p>	
<p>District 48 Brian C. Newberry rep-newberry@rilin.state.ri.us 617-406-4619</p>	

Burrillville Town Hall
Office of the Town Manager
105 Harrisville Main Street
Harrisville, RI 02830